



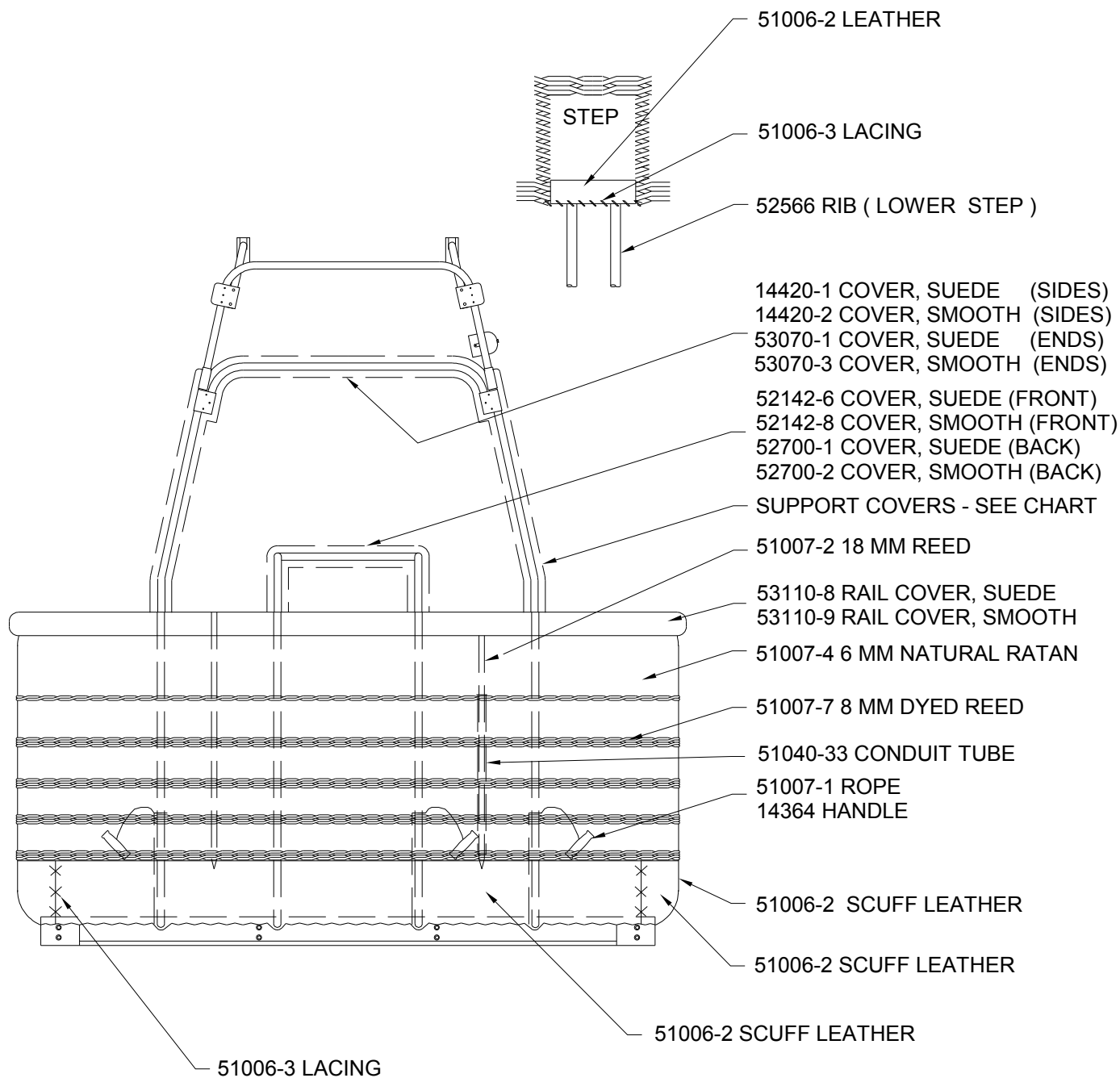
# PARTS MANUAL

## CLASSIC X GONDOLA MODEL “RB8” P/N 52430

PART NUMBER		DESCRIPTION	UNITS
14364		HANDLE, GONDOLA	EA.
14420	- 1	COVER, SUEDE LEATHER SIDE FRAME	EA.
14420	- 2	COVER, SMOOTH LEATHER SIDE FRAME	EA.
14571		STRAP ASSY TANK V15 / V18	EA.
51003	- 1	FOAM, THERMAL CELL NOMACO C78A	FT.
51003	- 7	TUBING, POLY ACCENTS (100 FT. ROLLS)	FT.
51003	- 55	FOAM, 3W301 3/4 X 1 3/8	FT.
51003	- 61	FOAM, 3W307 3/4 X 1 3/8	FT.
51003	- 81	BOOT, RUBBER	EA.
51003	- 82	BARB CONNECTOR FOR POLY WICKER	EA.
51006	- 2	LEATHER, MOCCASIN COWHIDE	EA.
51006	- 3	INDIAN TAN LACING	FT.
51007	- 1	ROPE, 5/16 BADGER 3 STRAND TAN POLY	FT.
51007	- 2	WICKER, 18-MM ROUND REED	5 LB. MIN.
51007	- 3	WICKER, 9-10 MM NATURAL KOOBOO RATAN	5 LB. MIN.
51007	- 4	WICKER, 4-7 MM NATURAL KOOBOO RATAN	5 LB. MIN.
51007	- 17	NYLON LACING, #381 TASLN, ST/684 BLACK/BROWN	FT.
51007	- 18	ROPE, 1/2 " BLACK, INSIDE HANDLE	EA.
51012	- 3	POP RIVET AD 48BS	EA.
51013	- 1	BOLT, AIRCRAFT AN3-12A	EA.
51013	- 4	BOLT, AIRCRAFT AN3-14A	EA.
51013	- 17	BOLT, AIRCRAFT AN4-15A	EA.
51013	- 24	BOLT, AIRCRAFT AN4-21A	EA.
51013	- 25	BOLT, AIRCRAFT AN4-22A	EA.
51013	- 59	BOLT, AIRCRAFT BOLT AN3-16A	EA.
51013	- 83	BOLT, AIRCRAFT AN3-17A	EA.
51013	- 95	BOLT, 1/4-28 GRADE 8	EA.
51014	- 21	SCREW, FLAT END SET 3/8-16 X 5/8	EA.
51014	- 29	SCREW, WOOD FLAT HEAD SQUARE DRIVE #12 X 2"	EA.
51015	- 1	NUT, MS20365-1032A 10-32	EA.
51015	- 2	NUT, 10-32 CAPNUT ESAN 22 NKM2	OBSOLETE
51015	- 10	NUT, LOCKING MS20365-428A	EA.
51015	- 37	NUT, LOCKING 5/16-18 ESNA	EA.
51017	- 1	WASHER, 1/4 PLN AN960-C416	EA.
51017	- 2	WASHER, 1/4 PLN PLATED STL	EA.
51017	- 4	WASHER, POP RIVET 1/8	EA.
51017	- 18	WASHER, 5/16 CAD PLATED	EA.
51017	- 32	WASHER, FENDER 1.750.D. X 1/4 I.D.	EA.
51019	- 38	BOLT, CARRIAGE 5/16-18 X 2 1/2 SS	EA.
51037	- 7	SLEEVE, 3/32 OVAL COPPER 5005-3	EA.
51037	- 15	CABLE, 1/16 RED PVC	FT.
51038	- 5	FIRE EXTINGUISHER	EA.
51040	- 33	TUBE, 3/4 ELECTRICAL METALLIC TUBING	EA.
51054	- 49	SAFETY WALK, 2"	FT.
51079	- 2	SIDE FRAME, RB6, RB8	EA.
51080	- 4	SUPPORT TUBE, RB6, RB8, RB12	EA.
51082		BURNER FITTING ASSEMBLY 4 PT	EA.
51082	- 2	BURNER SUPPORT INSERT, ADJUSTMENT BLOCK	EA.
51082	- 3	BURNER SUPPORT, INSERT, COMPRESSION SPACER	EA.
51086	- 2	LOWER FRAME, RB6	EA.
51093	- 1	BAG, ACCESSORY SUEDE	EA.
51093	- 2	BAG, ACCESSORY SMOOTH	EA.
51093	- 3	BAG, ACCESSORY CORDURA	EA.
51100		SIDE FRAME, LOWER RB	EA.
51113	- 1	COVER, SMOOTH LEATHER RB SUPPORT TUBE	EA.
51113	- 2	COVER, SMOOTH LEATHER RB SUPPORT TUBE	EA.

PART NUMBER		DESCRIPTION	UNITS
51114	- 1	COVER, SMOOTH LEATHER RB SUPPORT TUBE W/FLAP	EA.
51114	- 3	COVER, SMOOTH LEATHER SUPPORT TUBE RB W/FLAP	EA.
51497		FRAME, TOP BASKET RB8	EA.
51518	- 5	CONNECTOR PIN RB	EA.
52120	- 1	QUICK RELEASE PIN AVIBANK 55964	EA.
52142	- 6	COVER, SUEDE LEATHER RB TANK TOP FRAME RB6	EA.
52142	- 7	COVER, SUEDE LEATHER RB8/12	EA.
52142	- 9	COVER, SMOOTH LEATHER TANK FRAME SHORT RB8/12	EA.
52145		STEP STIFFENER, LOWER	EA.
52163		QUICK RELEASE PIN WITH RETAINER	EA.
52174		TOOL POUCH	EA.
52249		FIRE EXTINGUISHER POUCH	EA.
52315		BRACKET, SKID INNER	EA.
52321		END FRAME RB	EA.
52427		TANK ASSEMBLY, V-23 SINGLE SERVICE	EA.
52438		TANK SUPPORT, RB6, RB8	EA.
52458	- 1	COVER, SUEDE LEATHER SUPPORT TUBE RB #4	EA.
52458	- 2	COVER, SUEDE LEATHER SUPPORT TUBE RB #3	EA.
52458	- 3	COVER, SMOOTH LEATHER SUPPORT TUBE RB #4	EA.
52458	- 4	COVER, SMOOTH LEATHER SUPPORT TUBE RB #3	EA.
52459	- 1	COVER, SUEDE LEATHER SUPPORT TUBE RB #1 W/FLAP	EA.
52459	- 2	COVER, SUEDE LEATHER SUPPORT TUBE RB #2 W/FLAP	EA.
52459	- 3	COVER, SMOOTH LEATHER SUPPORT TUBE RB #1 W/FLAP	EA.
52459	- 4	COVER, SMOOTH LEATHER SUPPORT TUBE RB #2 W/FLAP	EA.
52479		FIRE EXTINGUISHER	EA.
52497		FRAME, TOP BASKET RB8	EA.
52499		TAB, REINFORCEMENT	EA.
52500		FRAME, RB6 TANK TOP	EA.
52501	- 1	TUBE CONNECTOR, RB 90 DEG.	EA.
52501	- 2	TUBE CONNECTOR, RB 12 DEG.	EA.
52503	- 1	DIVIDER FRAME UPPER TUBES, RB8, 47.7 IN	EA.
52503	- 2	DIVIDER FRAME UPPER TUBES, RB8, 30.75 IN	EA.
52503	- 3	DIVIDER FRAME UPPER TUBES, RB8	EA.
52505		SKID, LONG FRONT RB8, RB12	EA.
52506		FLOOR, RB8	EA.
52510		PLATFORM, PILOT RB8	EA.
52511		SKID, SHORT RB	EA.
52512		SKID, CENTER RB	EA.
52514		SKID, LONG BACK RB8, RB12	EA.
52515	- 1	RB8 PARTITION HALF ASSEMBLY	EA.
52516		SKID GUARD, POLY, RB CENTER	EA.
52518		PLATFORM SUPPORT RB8	EA.
52522	- 1	U BRACKET, 5/16 IN HOLE	EA.
52522	- 2	U BRACKET, 3/16 IN HOLE	EA.
52523	- 1	DIVIDER, LOWER TUBES RB8 27 IN	EA.
52523	- 2	DIVIDER, LOWER TUBES RB8 43 IN	EA.
52525		SKID GUARD, POLY LONG SIDE RB8	EA.
52526		STRAP, TANK V23	EA.
52527		SKID GUARD, POLY SHORT SIDE RB	EA.
52566		RIB, STIFFENER RB	EA.
52700	- 1	COVER, TANK TOPFRAME SHORT RB8, RB12 (SUEDE)	EA.
52700	- 2	COVER, TANK TOPFRAME SHORT RB8, RB12 (SMOOTH)	EA.
52701	- 1	KNEE PAD, RB8 BACKSIDE CORNER 3	EA.
52701	- 2	KNEE PAD, RB8 BACKSIDE CORNER 4	EA.
52702	- 1	KNEE PAD, RB8 FRONTSIDE CORNER 1	EA.
52702	- 2	KNEE PAD, RB8 FRONTSIDE CORNER 2	EA.

PART NUMBER		DESCRIPTION	UNITS
52929		FRAME, TANK, SHORT RB8, RB12	EA.
52987		BRACKET, OUTER POLY SKID	EA.
53019		WASHER, 3 IN ALUMINUM	EA.
53034	- 1	OVERSLEEVE, RB	EA.
53034	- 2	OVERSLEEVE, RB	EA.
53070	- 1	COVER, SUEDE LEATHER END FRAME, RB6, RB8	EA.
53070	- 3	COVER, SMOOTH LEATHER END FRAME, RB6, RB8	EA.
53093		SPACER, COLLAR RB	EA.
53097	- 1	BURNER SUPPORT FITTING, SLOTTED	EA.
53105		PIN, WIRE LOCK, S.S. W/LANYARD (STAMPED "S")	EA.



SUPPORT TUBE COVERS	CORNER 1 (with Flap)	CORNER 2	CORNER 3 (with Flap)	CORNER 4
SUEDE LEATHER	52459-1	52459-2	52458-2	52458-1
SMOOTH LEATHER	52459-3	52459-4	52458-4	52458-3

Figure RB8-1

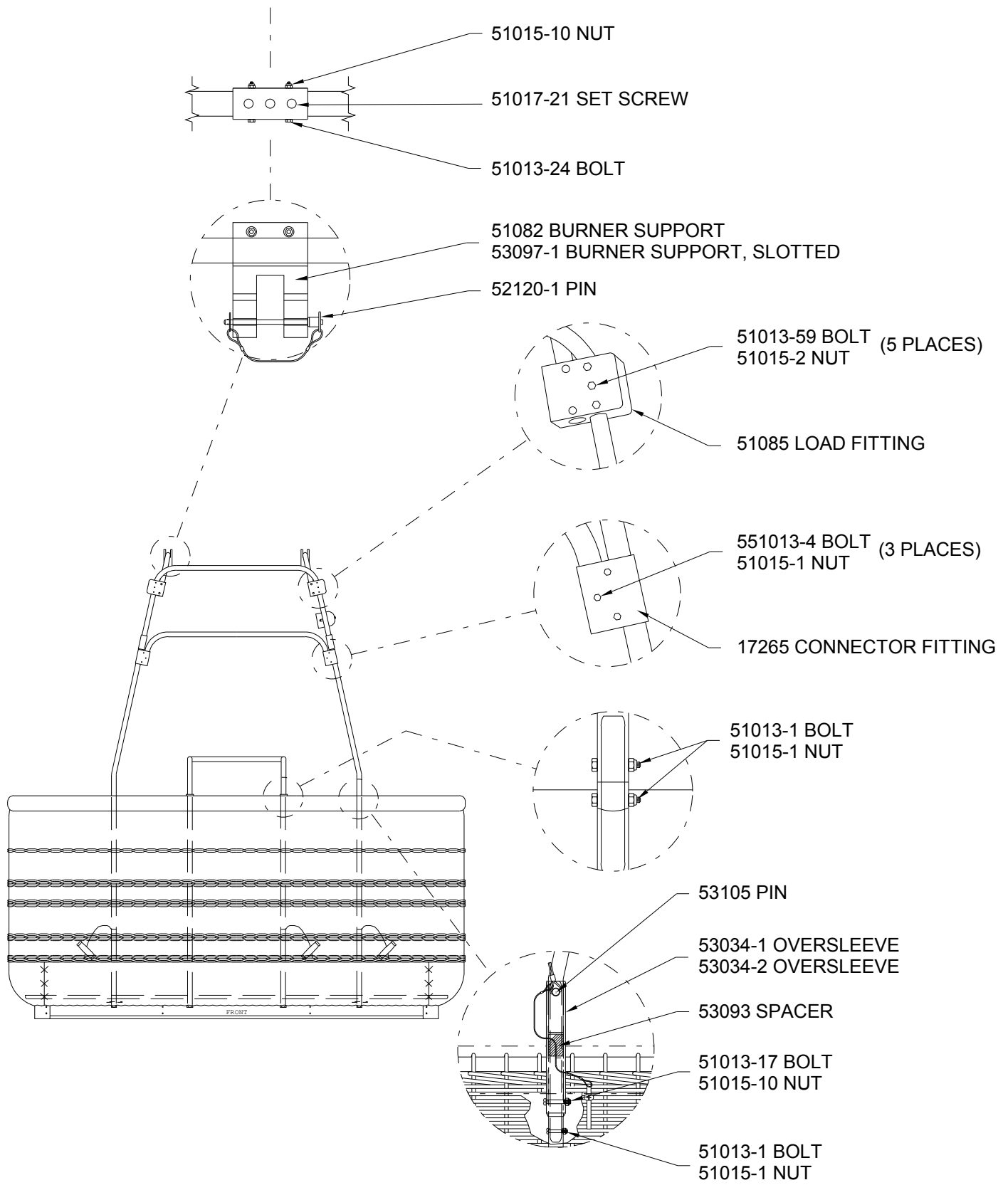


Figure RB8-2

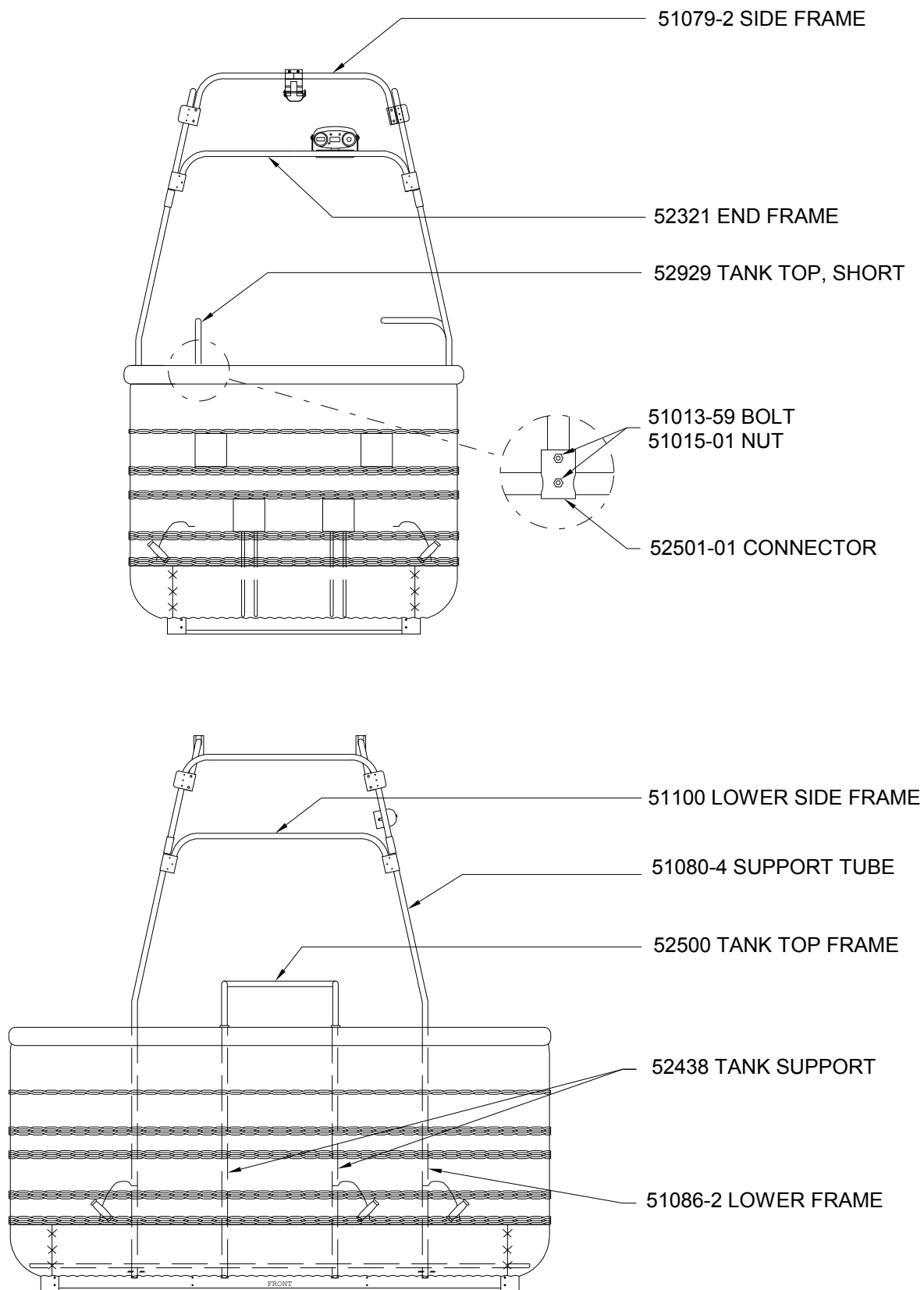


Figure RB8-3

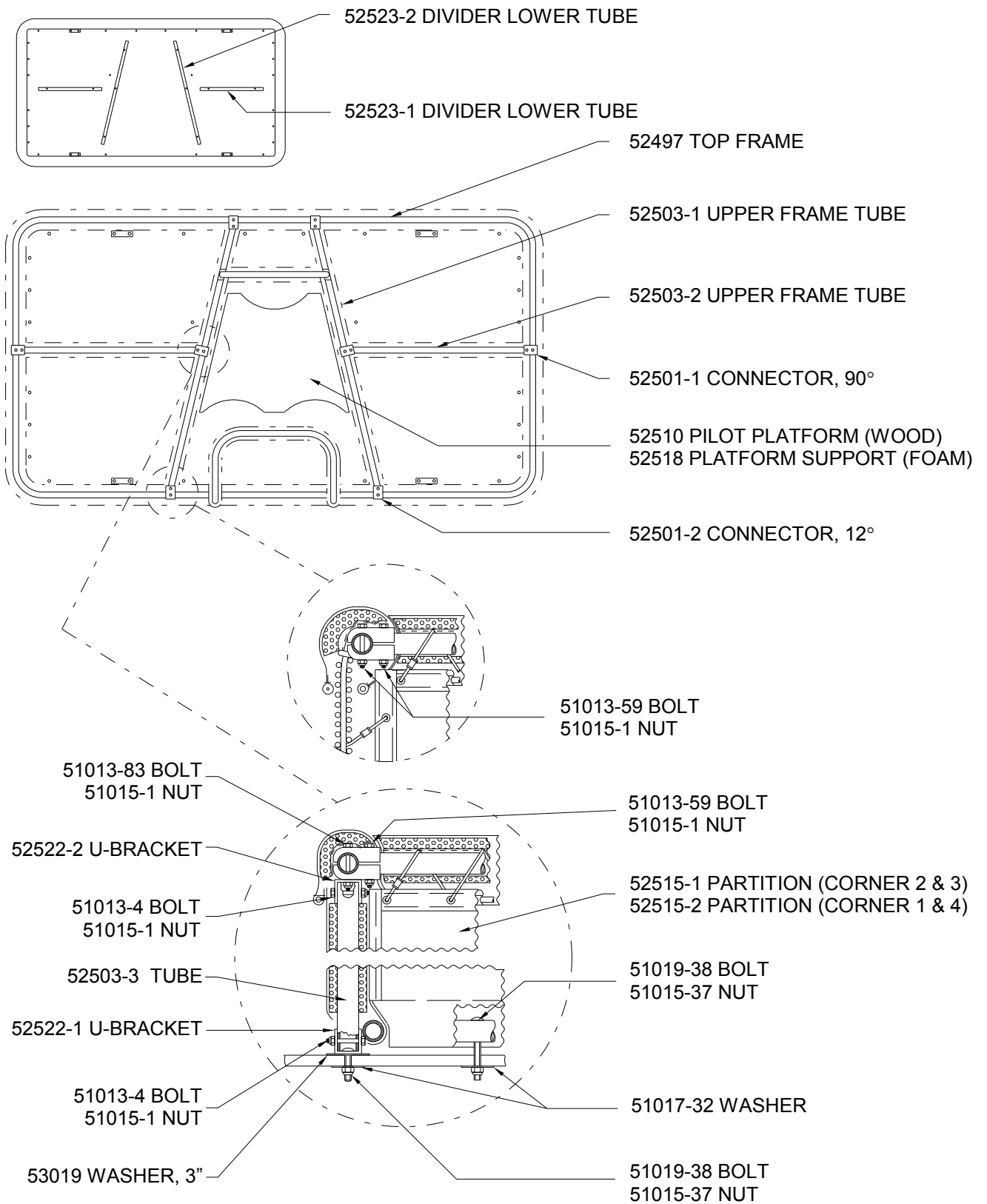


Figure RB8-4



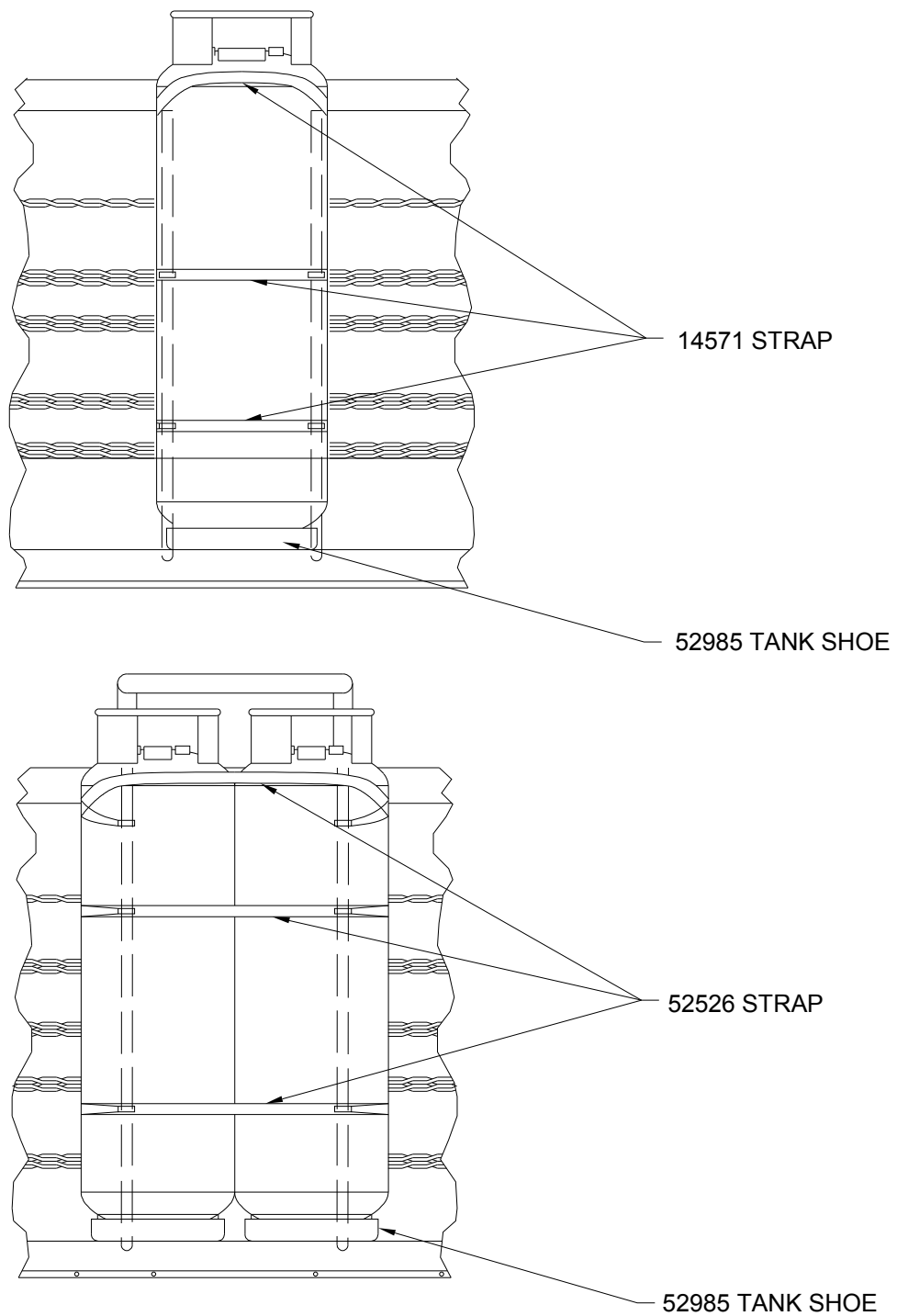


Figure RB8-5

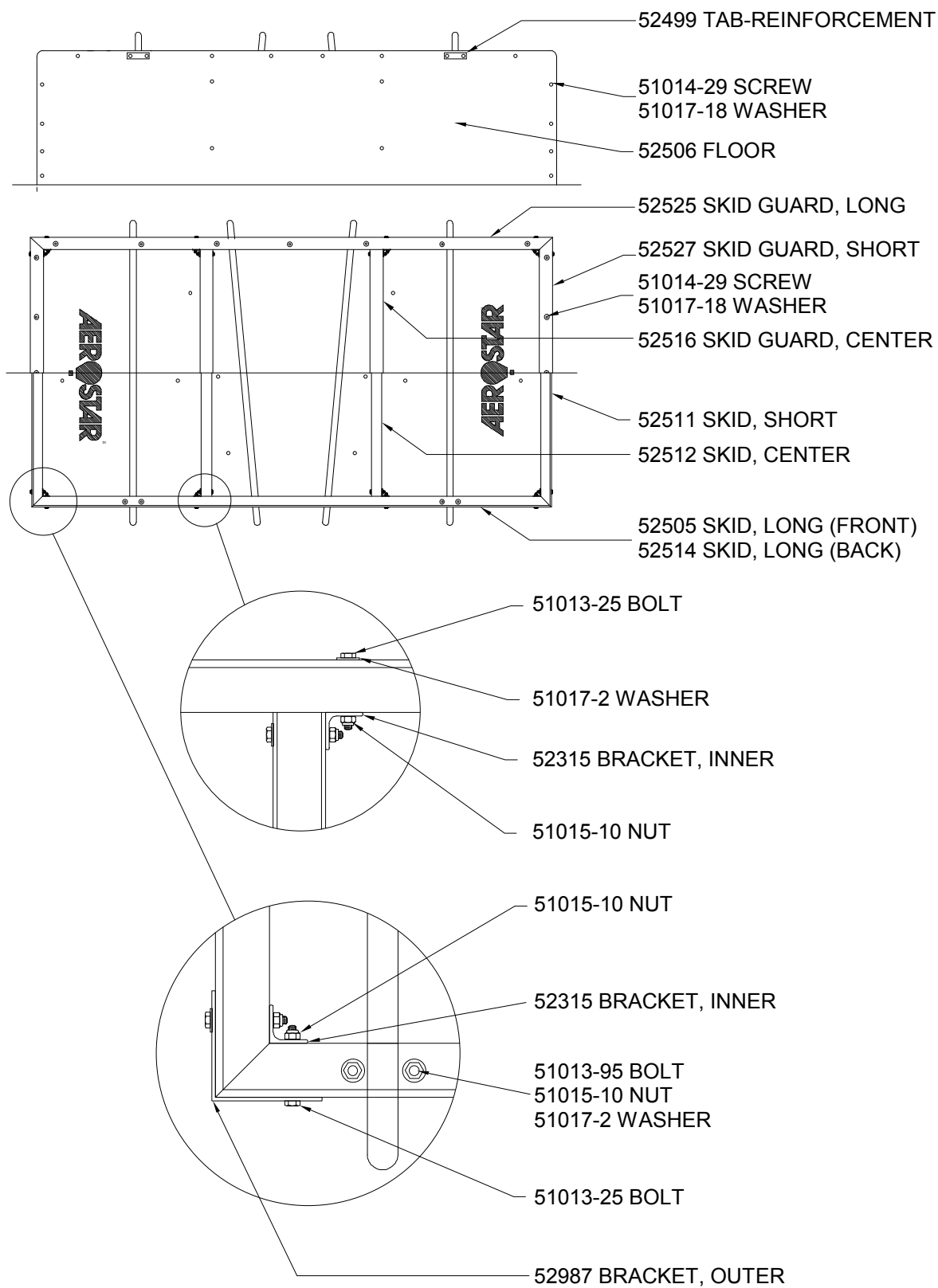


Figure RB8-6