

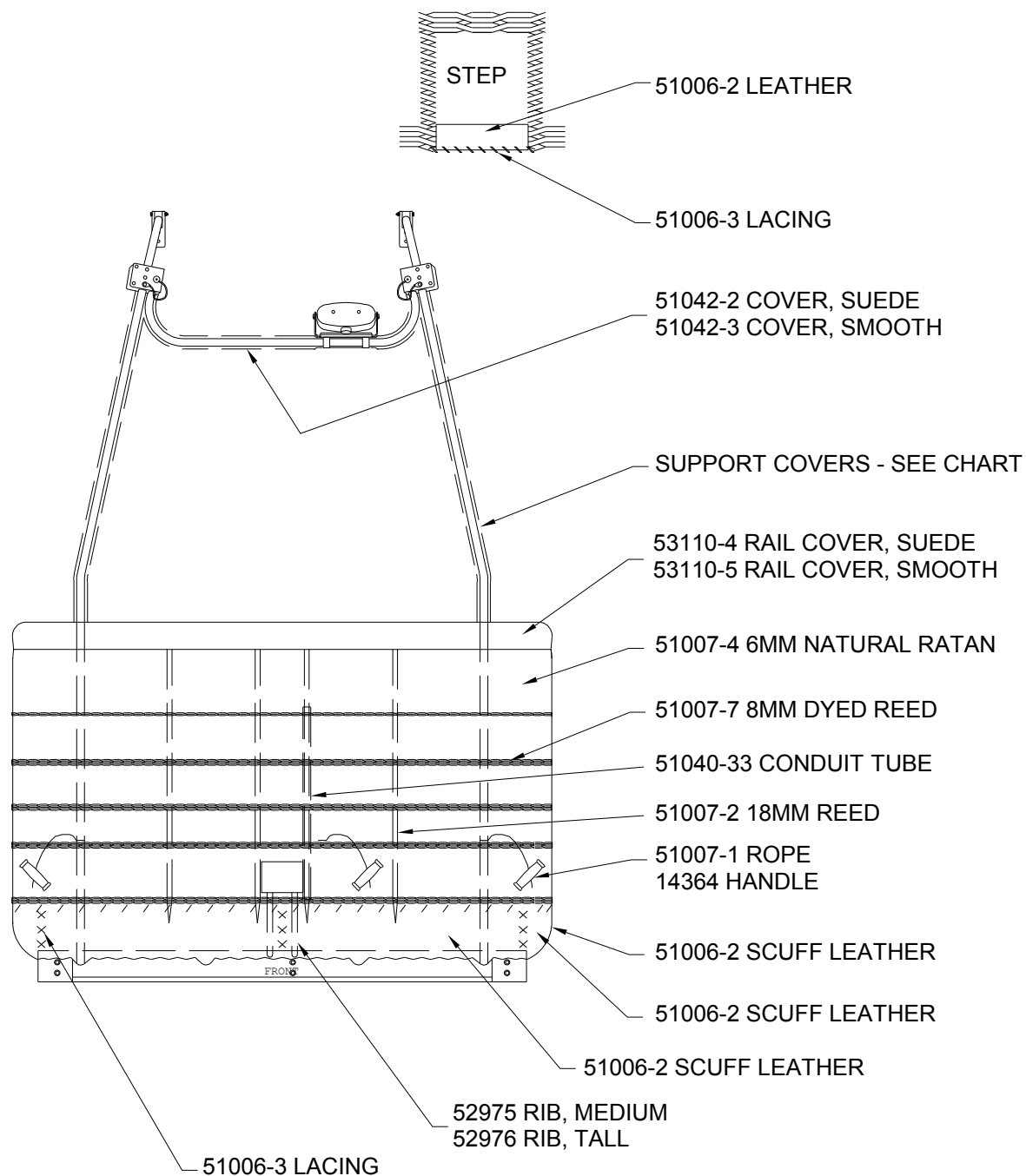


PARTS MANUAL

CLASSIC VIII GONDOLA MODEL "RB5" P/N 52805

PART NUMBER		DESCRIPTION	UNITS
14364		HANDLE, GONDOLA	EA.
14571		STRAP ASSY TANK V15 / V18	EA.
51003	- 1	FOAM, THERMAL CELL NOMACO C78A	FT.
51003	- 7	TUBING, POLY ACCENTS (100 FT. ROLLS)	FT.
51003	- 61	FOAM, 3W307 3/4 X 1 3/8	FT.
51003	- 82	BARB CONNECTOR FOR POLY WICKER	EA.
51006	- 2	LEATHER, MOCCASIN COWHIDE	EA.
51006	- 3	INDIAN TAN LACING	FT.
51007	- 1	ROPE, 5/16 BADGER 3 STRAND TAN POLY	FT.
51007	- 2	WICKER, 18-MM ROUND REED	5 LB. MIN.
51007	- 3	WICKER, 9-10 MM NATURAL KOOBOO RATAN	5 LB. MIN.
51007	- 4	WICKER, 4-7 MM NATURAL KOOBOO RATAN	5 LB. MIN.
51007	- 7	WICKER, DYED 8 MM ROUND REED	5 LB. MIN.
51007	- 17	NYLON LACING, #381 TASLN, ST/684 BLACK/BROWN	FT.
51007	- 18	ROPE, 1/2 " BLACK, INSIDE HANDLE	EA.
51011	- 19	QUICK RELEASE PIN BLS3B168	EA.
51013	- 1	BOLT, AIRCRAFT AN3-12A	EA.
51013	- 17	BOLT, AIRCRAFT AN4-15A	EA.
51013	- 24	BOLT, AIRCRAFT AN4-21A	EA.
51013	- 25	BOLT, AIRCRAFT AN4-22A	EA.
51013	- 59	BOLT, AIRCRAFT BOLT AN3-16A	EA.
51013	- 83	BOLT, AIRCRAFT AN3-17A	EA.
51014	- 21	SCREW, FLAT END SET 3/8-16 X 5/8	EA.
51014	- 29	SCREW, WOOD FLAT HEAD SQUARE DRIVE #12 X 2"	EA.
51015	- 1	NUT, MS20365-1032A 10-32	EA.
51015	- 3	NUT, LOCKING 1/4 - 20	EA.
51015	- 10	NUT, LOCKING MS20365-428A	EA.
51017	- 1	WASHER, 1/4 PLN AN960-C416	EA.
51017	- 2	WASHER, 1/4 PLN PLATED STL	EA.
51017	- 15	WASHER, SS MS15795-841	EA.
51017	- 18	WASHER, 5/16 CAD PLATED	EA.
51017	- 32	WASHER, FENDER 1.75O.D. X 1/4 I.D.	EA.
51019	- 3	BOLT, CARRIAGE 1/4-20 X 2	EA.
51019	- 39	U-BOLT, .25 X 3.125 X 1.125 SS	EA.
51038	- 5	FIRE EXTINGUISHER	EA.
51040	- 33	TUBE, 3/4 ELECTRICAL METALLIC TUBING	EA.
51054	- 49	SAFETY WALK, 2"	FT.
51082		BURNER FITTING ASSEMBLY 4 PT	EA.
51082	- 2	BURNER SUPPORT INSERT, ADJUSTMENT BLOCK	EA.
51082	- 3	BURNER SUPPORT, INSERT, COMPRESSION SPACER	EA.
51093	- 1	BAG, ACCESSORY SUEDE	EA.
51093	- 2	BAG, ACCESSORY SMOOTH	EA.
51093	- 3	BAG, ACCESSORY CORDURA	EA.
51518	- 5	CONNECTOR PIN RB	EA.
52120	- 1	QUICK RELEASE PIN AVIBANK 55964	EA.
52128		LOAD FITTING 4 POINT	EA.
52142	- 2	COVER, SUEDE LEATHER SIDE FRAME CWS	EA.
52142	- 3	COVER, SMOOTH LEATHER SIDE FRAME CWS	EA.
52145		STEP STIFFENER, LOWER	EA.
52163		QUICK RELEASE PIN WITH RETAINER	EA.
52174		TOOL POUCH	EA.
52249		FIRE EXTINGUISHER POUCH	EA.
52315		BRACKET, SKID INNER	EA.
52479		FIRE EXTINGUISHER	EA.
52501	- 1	TUBE CONNECTOR, RB 90 DEG.	EA.
52803		LOWER FRAME, RB5	EA.

PART NUMBER		DESCRIPTION	UNITS
52804		SUPPORT TUBE, RB5	EA.
52807		SIDE FRAME, RB5	EA.
52880		SKID, LONG RB5	EA.
52881		SKID, SHORT RB5	EA.
52883		SKID, CENTER RB5	EA.
52884		FLOOR, RB5	EA.
52885		FRAME, RB5 TOP PERIMETER	EA.
52886		RIB, RB SHORT STEP	EA.
52887		DIVIDER BOARD, RB5	EA.
52888		DIVIDER CHANNEL, RB5	EA.
52889		TUBE, RB5 DIVIDER REINFORCEMENT	EA.
52890		DIVIDER ASSEMBLY RB5	EA.
52893		SKID GUARD, POLY RB5 SHORT	EA.
52894		SKID GUARD, POLY RB5 LONG	EA.
52895		SKID GUARD, POLY RB5 CENTER	EA.
52896		KNEE PAD, RB5	EA.
52918	- 1	COVER, SMOOTH LEATHER SUPPORT TUBE RB5	EA.
52918	- 2	COVER, SUEDE LEATHER SUPPORT TUBE RB5	EA.
52918	- 3	COVER, SMOOTH LEATHER SUPPORT TUBE W/FLAP RB5	EA.
52918	- 4	COVER, SUEDE LEATHER SUPPORT TUBE RB5	EA.
52919	- 1	COVER, SMOOTH LEATHER SUPPORT TUBE RB5 W/FLAP	EA.
52919	- 2	COVER, SUEDE LEATHER SUPPORT TUBE RB5	EA.
52919	- 3	COVER, SMOOTH LEATHER SUPPORT TUBE W/FLAP RB5	EA.
52919	- 4	COVER, SUEDE LEATHER SUPPORT TUBE RB5 W/FLAP	EA.
52975		RIB, MEDIUM STEP	EA.
52976		RIB, TALL STEP	EA.
52987		BRACKET, OUTER POLY SKID	EA.
53034	- 3	OVERSLEEVE, RB	EA.
53034	- 4	OVERSLEEVE, RB	EA.
53077	- 1	TANK SHOE BASE, LOWER RB5	EA.
53077	- 2	TANK SHOE BASE, UPPER RB5	EA.
53093		SPACER, COLLAR RB	EA.
53097	- 1	BURNER SUPPORT FITTING, SLOTTED	EA.
53105		PIN, WIRE LOCK, S.S. W/LANYARD (STAMPED "S")	EA.



SUPPORT TUBE COVERS	CORNER 1 (with Flap)	CORNER 2	CORNER 3 (with Flap)	CORNER 4
SUEDE LEATHER	52919-1	52918-1	52918-1	52918-1
SMOOTH LEATHER	52919-2	52918-2	52918-2	52918-2

Figure RB5-1

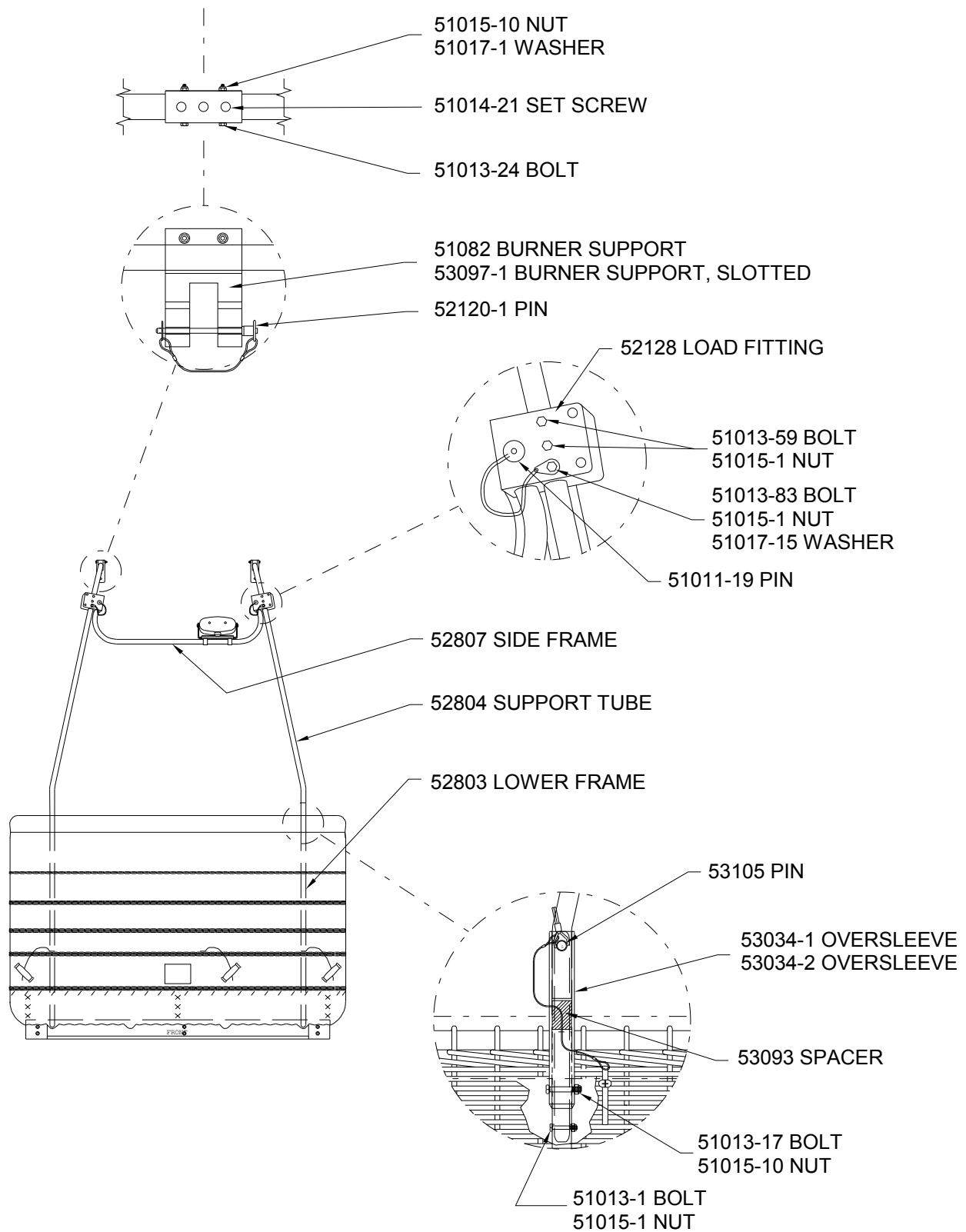


Figure RB5-2

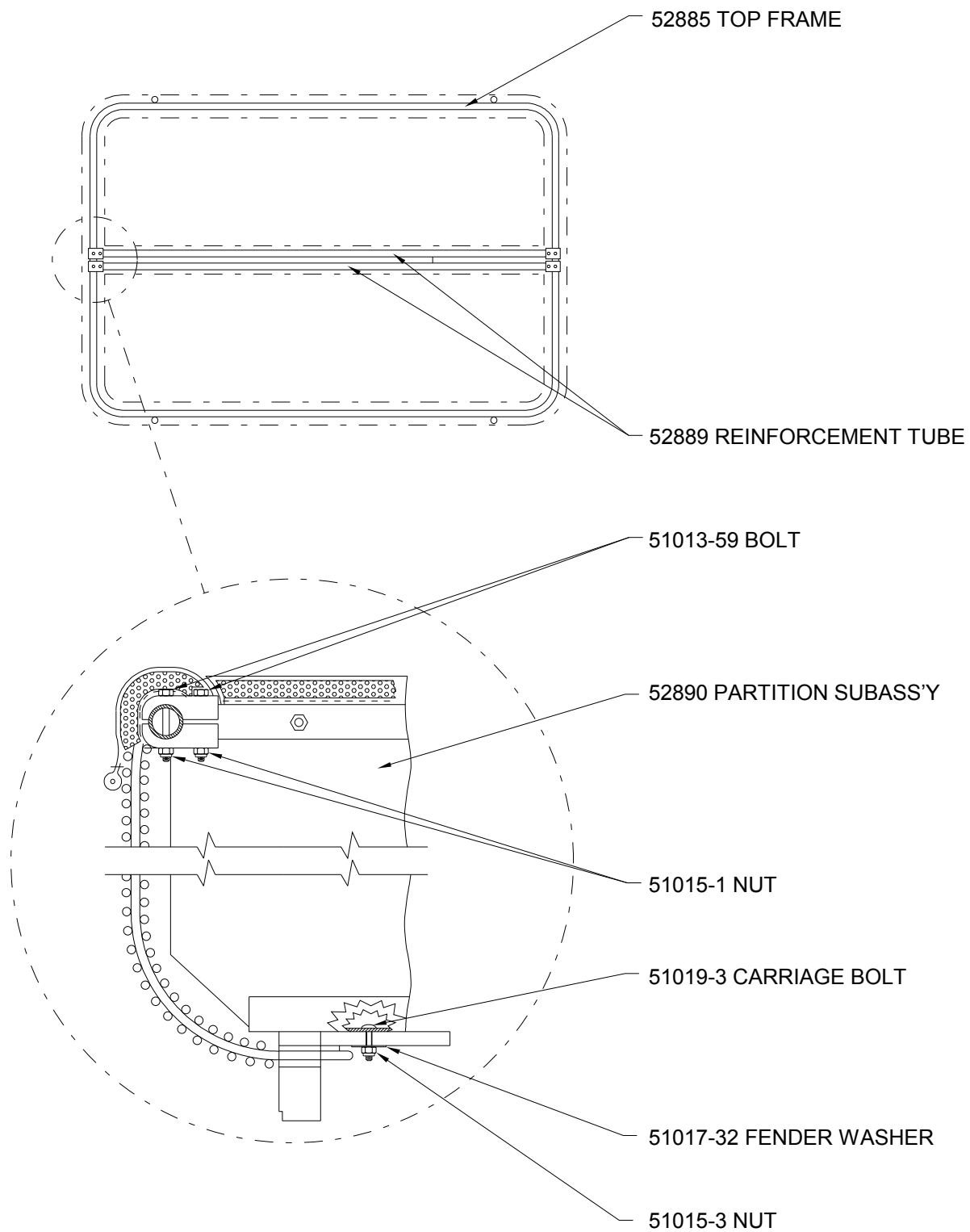


Figure RB5-3

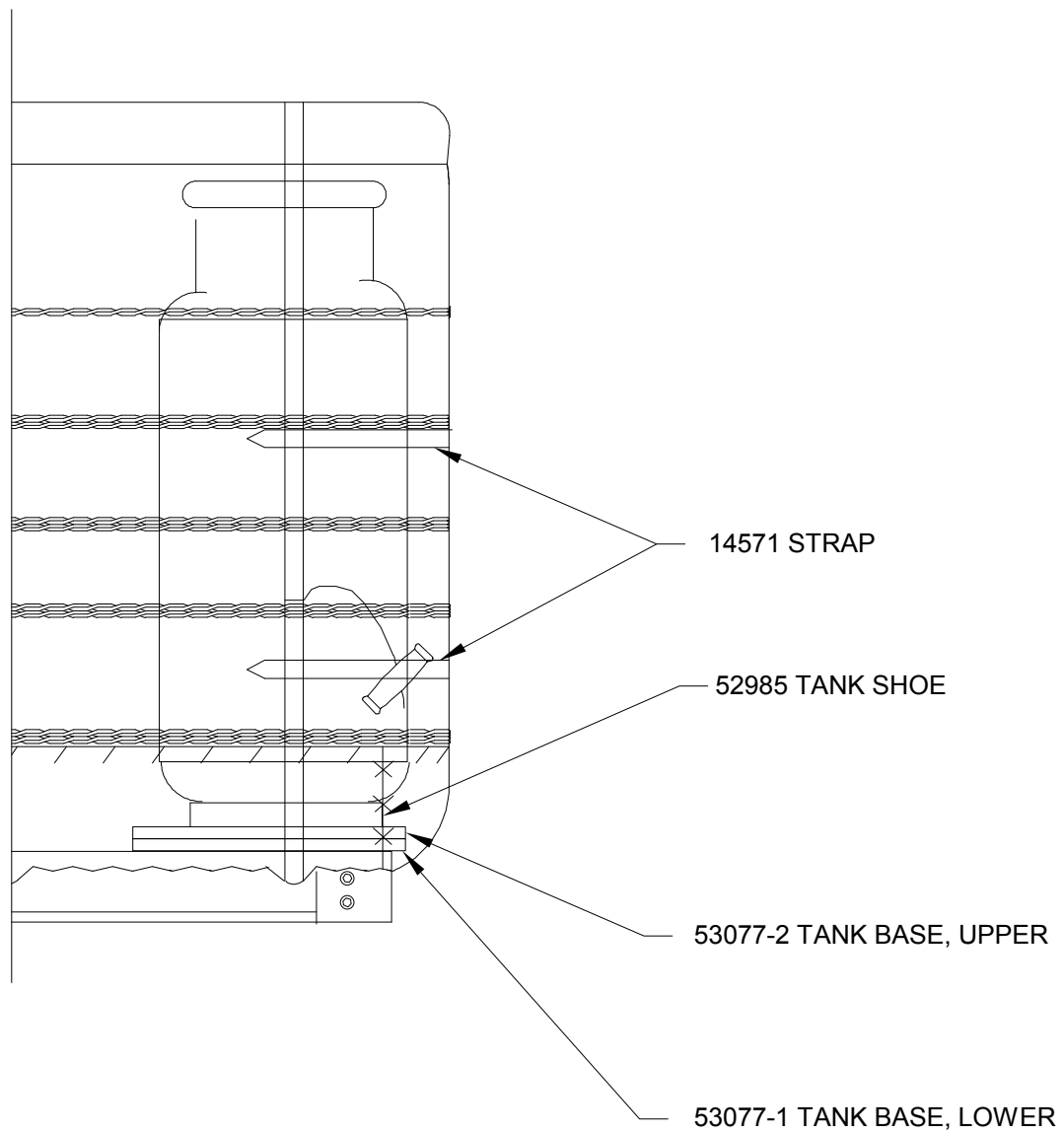


Figure RB5-4
Page 7
February 1, 2008

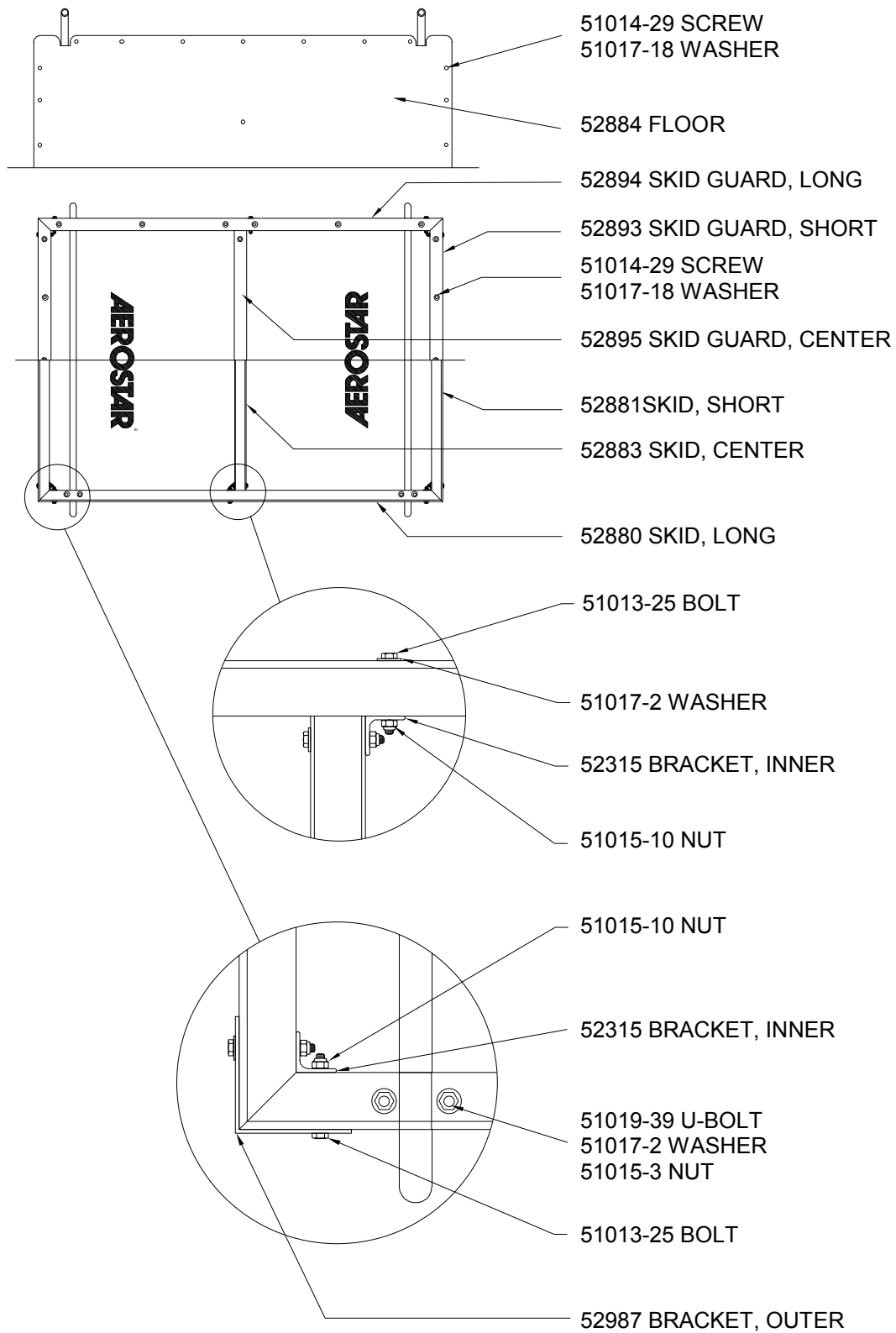


Figure RB5-5