

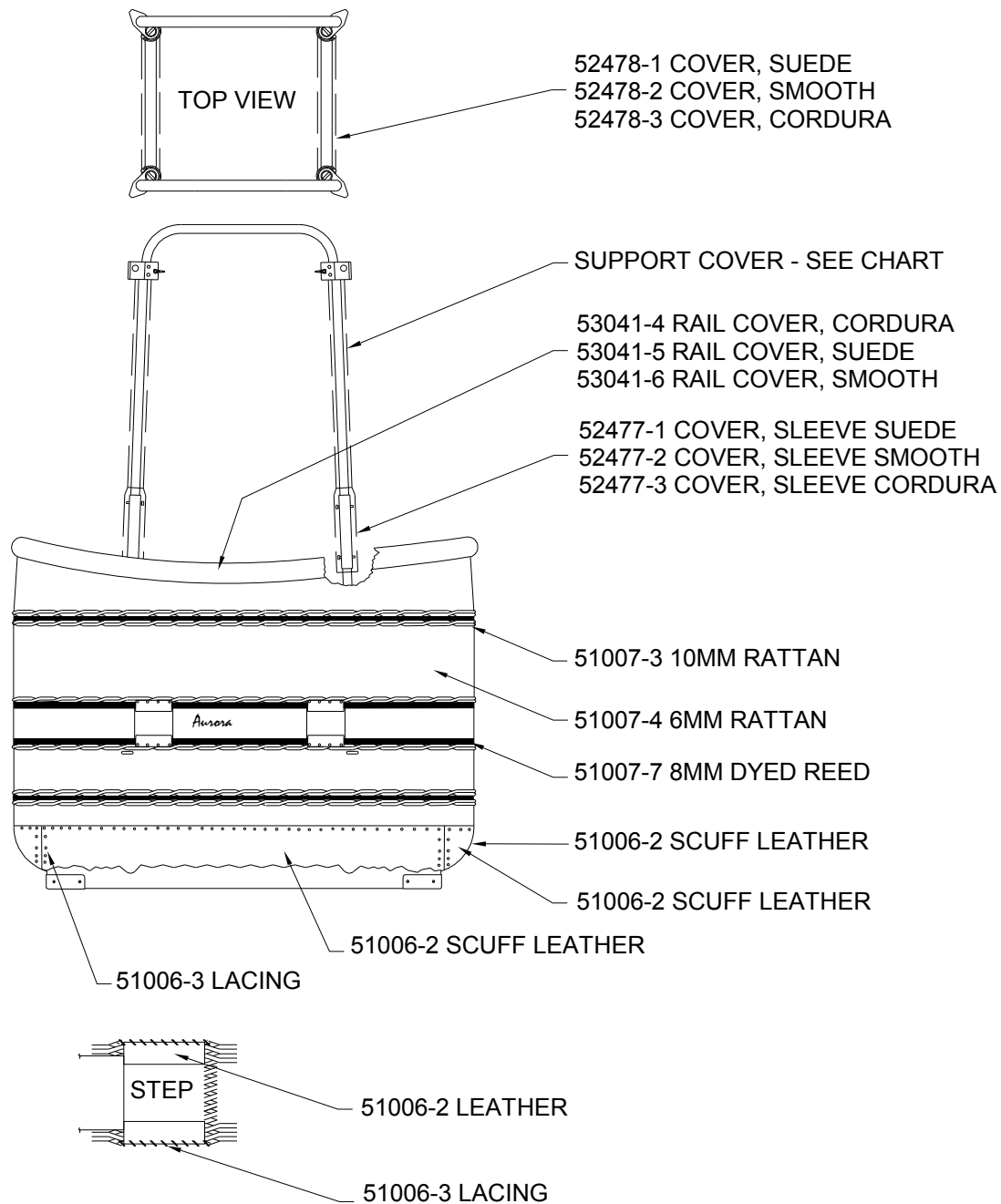


PARTS MANUAL

AURORA STRETCH GONDOLA MODEL “ELSS” P/N 53095

PART NUMBER		DESCRIPTION	UNITS
12593		STRAP, TANK H20 ASSY	EA.
12593	- 4	STRAP W/O BUCKLE CW & CWS	EA.
14571		STRAP ASSY TANK V15 / V18	EA.
51003	- 1	FOAM, THERMAL CELL NOMACO C78A	FT.
51003	- 7	TUBING, POLY ACCENTS (100 FT. ROLLS)	FT.
51003	- 55	FOAM, 3W301 3/4 X 1 3/8	FT.
51003	- 82	BARB CONNECTOR FOR POLY WICKER	EA.
51006	- 2	LEATHER, MOCCASIN COWHIDE	EA.
51006	- 3	INDIAN TAN LACING	FT.
51007	- 3	WICKER, 9-10 MM NATURAL KOOBOO RATAN	5 LB. MIN.
51007	- 4	WICKER, 4-7 MM NATURAL KOOBOO RATAN	5 LB. MIN.
51007	- 7	WICKER, DYED 8 MM ROUND REED	5 LB. MIN
51007	- 17	NYLON LACING, #381 TASLN, ST/684 BLACK/BROWN	FT.
51013	- 59	BOLT, AIRCRAFT BOLT AN3-16A	EA.
51013	- 83	BOLT, AIRCRAFT AN3-17A	EA.
51013	- 108	BOLT, AN4-20A	EA.
51014	- 13	SCREW, WOOD #8 X 1	EA.
51014	- 22	SCREW, WOOD 8 X 5/8 SQUARE DRIVE	EA.
51014	- 33	SCREW, WOOD COMBINATION #8 X 5/8	EA.
51015	- 1	NUT, MS20365-1032A 10-32	EA.
51015	- 10	NUT, LOCKING MS20365-428A	EA.
51015	- 24	NUT, THIN 21NTE-040 ESNA	EA.
51017	- 2	WASHER, 1/4 PLN PLATED STL	EA.
51017	- 5	WASHER, PLAIN #10	EA.
51017	- 18	WASHER, 5/16 CAD PLATED	EA.
51019	- 33	BOLT, ELEVATOR 1/4-20 X 2 1/2 IN	EA.
51038	- 5	FIRE EXTINGUISHER	EA.
51040	- 47	U-CLIPS FOR POLY CARBONATE WICKER SPLICE	EA.
51054	- 49	SAFETY WALK, 2"	FT.
51093	- 1	BAG, ACCESSORY SUEDE	EA.
51093	- 2	BAG, ACCESSORY SMOOTH	EA.
51093	- 3	BAG, ACCESSORY CORDURA	EA.
52133		COVER, HOSE, CORDURA, ELS, RWS	EA.
52143	- 11	COVER, CORDURA ELS #2 & 4	EA.
52143	- 12	COVER, CORDURA ELS #3	EA.
52143	- 13	COVER, SUEDE LEATHER SUPPORT TUBE ELS #2 & 4	EA.
52143	- 14	COVER, SUEDE LEATHER SUPPORT TUBE ELS #3	EA.
52143	- 15	COVER, SMOOTH LEATHER ELS #2 & 4	EA.
52143	- 16	COVER, SMOOTH LEATHER ELS #3	EA.
52144	- 8	COVER, SUEDE LEATHER SUPPORT TUBE ELS W/FLAP	EA.
52144	- 9	COVER, SMOOTH LEATHER ELS W/FLAP	EA.
52144	- 10	COVER, CORDURA ELS W/FLAP	EA.
52145		STEP STIFFENER, LOWER	EA.
52163		QUICK RELEASE PIN WITH RETAINER	EA.
52249		FIRE EXTINGUISHER POUCH	EA.
52287		STRAP ASSEMBLY, 10 GAL TANK	EA.
52291	- 2	TANK COVER H25	EA.
52403		POLY CARBONATE WICKER SPLICE	EA.
52443	- 3	LOWER FRAME, ALUM. ELS/ELSS	EA.
52443	- 4	LOWER FRAME, STAINLESS STEEL ELS/ELSS	EA.
52444	- 3	SUPPORT TUBE, ALUM. ELS/ELSS	EA.
52444	- 4	SUPPORT TUBE, STAINLESS STEEL ELS/ELSS	EA.
52445	- 3	SIDE FRAME, ALUM. ELS/ELSS	EA.
52445	- 4	SIDE FRAME, STAINLESS STEEL ELS/ELSS	EA.
52450	- 1	INTERFACE TUBE [M] ELS/ELSS ALUMINUM	EA.
52450	- 2	INTERFACE TUBE [M] ELS/ELSS STAINLESS STEEL	EA.

PART NUMBER		DESCRIPTION	PRICES	UNITS
52452		LOAD FITTING STANDARD ELS/ELSS		EA.
52453		TUBE, TANK SUPPORT, ELS/ELSS		EA.
52455		SKID, SHORT ELS/ELSS		EA.
52456		LOAD FITTING, CARABINER ELS/ELSS		EA.
52470		BOARD, FILLER ELS		EA.
52477	- 1	COVER, SUEDE LEATHER SLEEVES ELS		EA.
52477	- 2	COVER, SMOOTH LEATHER SLEEVES ELS		EA.
52477	- 3	COVER, CORDURA SLEEVES ELS		EA.
52478	- 1	COVER, SUEDE LEATHER SIDE FRAME ELS		EA.
52478	- 2	COVER, SMOOTH LEATHER SIDE FRAME ELS		EA.
52478	- 3	COVER, CORDURA SIDE FRAME ELS		EA.
52479		FIRE EXTINGUISHER		EA.
52985	- 1	TANK SHOE		EA.
53041	- 4	COVER, RAIL ELSS CORDURA		EA.
53041	- 5	COVER, RAIL ELSS SUEDE		EA.
53041	- 6	COVER, RAIL ELSS SMOOTH		EA.
53084		SKID, LONG SIDE ELSS		EA.
53085		FLOOR, ELSS		EA.
53086		SKID GUARD, POLY ELSS LONG		EA.
53088	- 1	ELSS SEAT H-25, CORDURA, LEFT		EA.
53088	- 2	ELSS SEAT H-25, SMOOTH, LEFT		EA.
53090		PIN, WIRE LOCK, S.S. (STAMPED "S")		EA.
53091		PIN, WIRE LOCK, STEEL (STAMPED "A")		EA.
53118	- 1	BACKREST, SMOOTH LEATHER, ELS, ELSS, CW, RWSW		EA.
53118	- 2	BACKREST, CORDURA ELS, ELSS, CW, RWSW		EA.
53143		CORDURA 1000D		EA.



SUPPORT TUBE COVERS	CORNER 1 (with Flap)	CORNER 2	CORNER 3	CORNER 4
STANDARD (HOSE FLAP)	52133	N/A	N/A	N/A
CORDURA	52144-10	52143-11	52143-12	52143-11
SUEDE LEATHER	52144-8	52143-13	52143-14	52143-13
SMOOTH LEATHER	52144-9	52143-15	52143-16	52143-15

Figure ELSS1

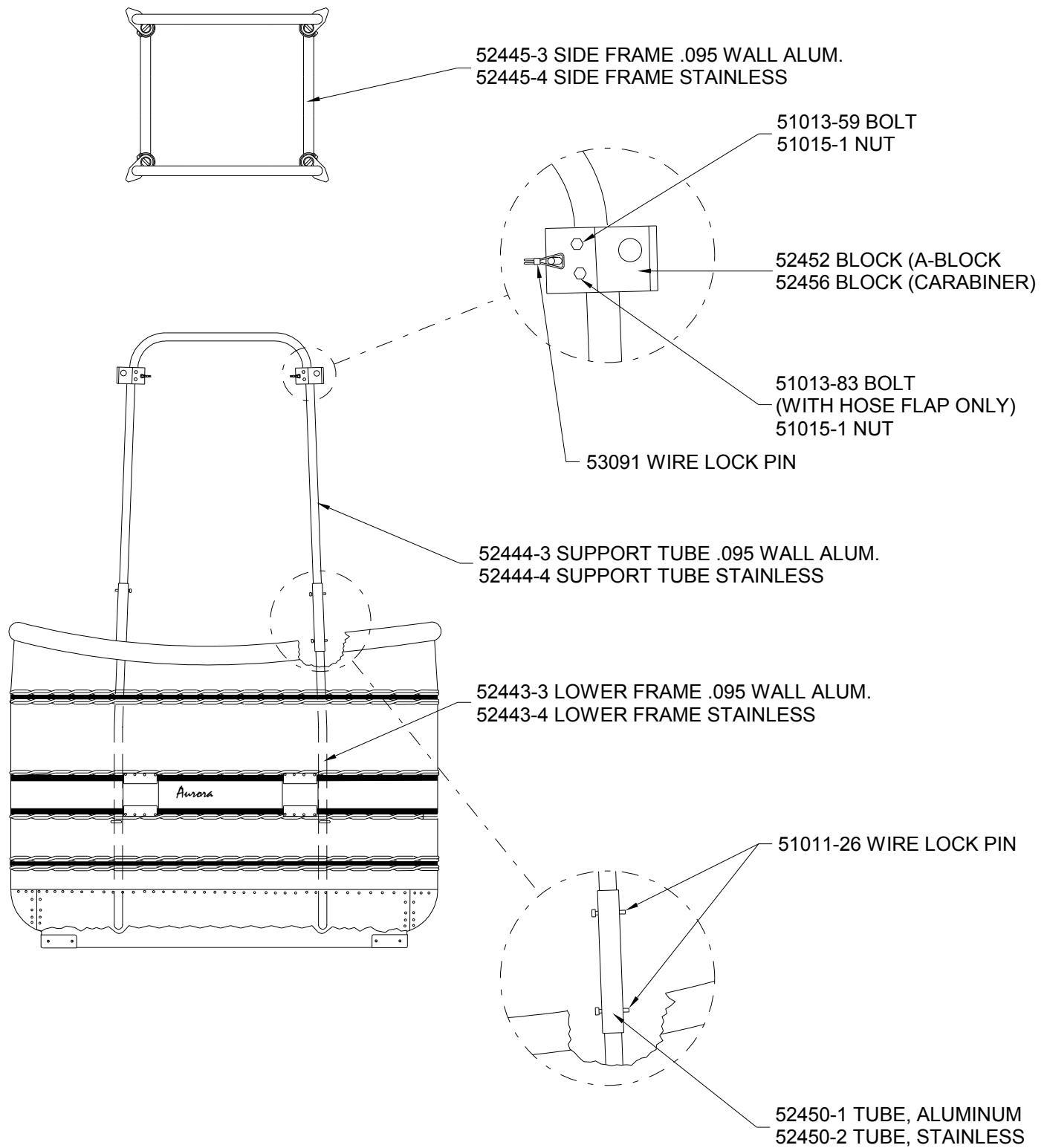


Figure ELSS2

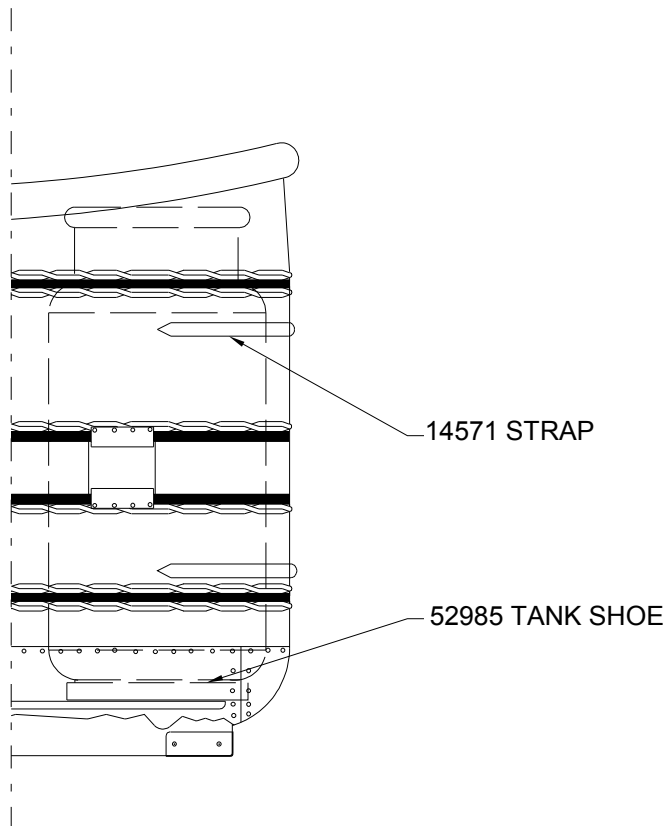
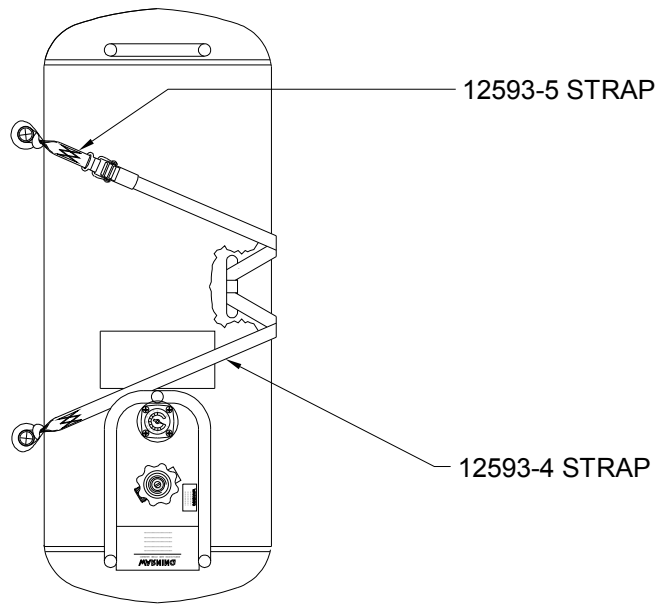


Figure ELSS3

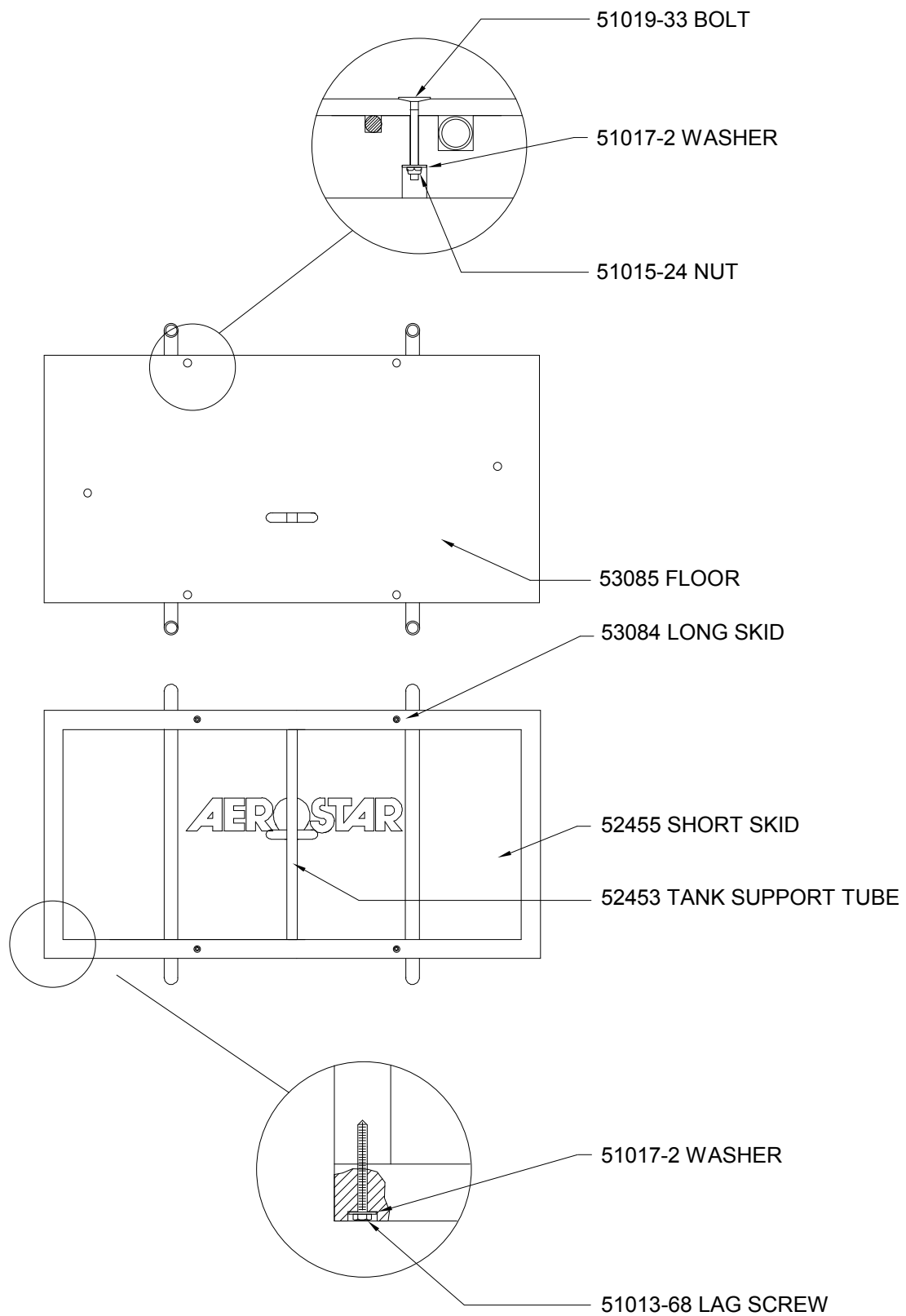


Figure ELSS4