



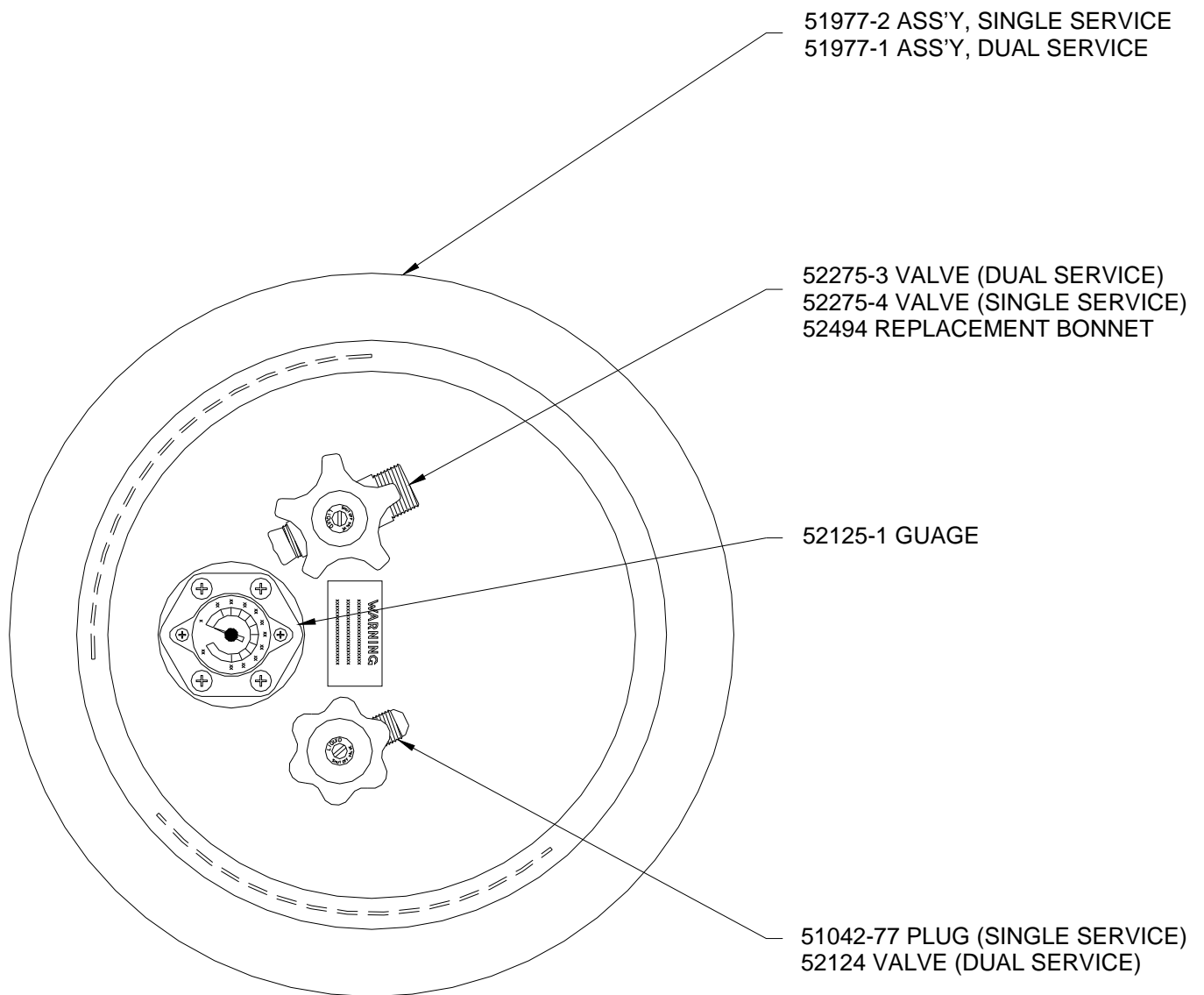
PARTS MANUAL

FUEL SYSTEMS

PART NUMBER		DESCRIPTION	UNITS
1245		GAUGE, TAYLOR H-20	EA.
7752	- 4	TANK ASSEMBLY H20 SINGLE FEED	EA.
7752	- 5	TANK ASSEMBLY H20 DUAL FEED (ELS)	EA.
13838		FUEL LINE COMBINATION CW	EA.
13854		FUEL LINE SUPPLY	EA.
13864		FUEL LINE BURNER, 85" H-20/H-25	EA.
13866		FUEL LINE BURNER WITH POL	EA.
14567		FUEL LINE PILOT RW	EA.
15339		FUEL LINE EXTRA TANK RW	EA.
15341		FUEL LINE MAIN SUPPLY RW	EA.
15342	- 1	FUEL LINE BURNER, 62"	EA.
15342	- 2	FUEL LINE BURNER SINGLE	EA.
15343		FUEL LINE PILOT, VERT TANK DUAL	EA.
15344		FUEL LINE SUPPLY CWV	EA.
15345		FUEL LINE SUPPLY CWV	EA.
15346		FUEL FITTING SUPPLY CWV	EA.
15347		FUEL LINE EXTRA TANK OPT	EA.
15348		FUEL LINE PILOT G CW	EA.
50000	- 39	VALVE H20 ALLOY HANDTURN ELBOW	EA.
51003	- 12	GASKET, #130128 TANK GAUGE	EA.
51023	- 3	DIAL, H-20 REPLACEMENT, TAYLOR	EA.
51023	- 11	DIAL, 5-01749 H-20 ROCHESTER	EA.
51023	- 13	DIAL, 2766 V-15 TAYLOR	EA.
51023	- 16	DIAL, V-23 REPLACEMENT	EA.
51023	- 23	DIAL, V-18 REPLACEMENT	EA.
51034	- 3	O-RING, REGO HANDTURN	OBSOLETE
51034	- 4	O-RING, T12945 FISCHER HANDTURN	EA.
51034	- 7	O-RING, 2-109-N103-7	EA.
51034	- 8	O-RING, .379 IDX.103W SPEC 70BN	EA.
51034	- 11	O-RING, MARSHALL BRASS HANDTURN	EA.
51034	- 16	O-RING, REGULATOR, SMALL	EA.
51034	- 17	O-RING, REGULATOR, LARGE	EA.
51040	- 12	ADAPTOR, POL-PIPE	EA.
51042	- 1	M388 POL CONNECTOR(FISCHER)	EA.
51042	- 2	FITTING, ELBOW 90 DEG. 1/4 PIPE	EA.
51042	- 4	FITTING, STREET ELBOW 90 DEG.	EA.
51042	- 6	FITTING, ADAPTER ELBOW 90 DEG.	EA.
51042	- 7	FITTING, FEMALE TEE 1/4 PIPE	EA.
51042	- 10	FITTING, STREET ELBOW 45 DEG. 2088-4-4S	EA.
51042	- 20	FITTING, HEX NIPPLE 2083-4-4S	EA.
51042	- 39	FITTING, ADAPTER PIP/JIC 2022-4-4S	EA.
51042	- 46	DUAL POINT REFILL TEE	EA.
51042	- 47	FITTING, ADAPTER PIPE/JIC 2021-4-4S	EA.
51042	- 49	FITTING, ADAPTER STRAIGHT 2000-4-6B	EA.
51042	- 65	FITTING, ELBOW 45 DEG. 4-4 FVE-S	EA.
51042	- 67	3/8 X 1/4 REDUCER	EA.
51042	- 69	FITTING, ADAPTER 45 PIPE/JIC 2023-4-4S	EA.
51042	- 77	FITTING, PIPE PLUG 3/4 IN 562070	EA.
51042	- 79	FITTING, NUT SS 3/8 IN SS-602-1	EA.
51042	- 103	NUT, HEX #72 SUPERIOR	EA.
51042	- 104	FITTING, NIPPLE, SUPERIOR SHORT	EA.
51042	- 107	FITTING, NIPPLE, 1/4 MNPT SHORT	EA.
51042	- 108	HAND NUT	EA.
51042	- 109	TEFLON TIP, SUPERIOR NIPPLE	EA.
51042	- 114	REDUCER, 3/4 X 3/8 NPT	EA.
51043	- 10	PRESSURE GAGE, 0-300 PSI, 2"	EA.
51043	- 26	PISTON ONLY, SHERWOOD YR3701BA REGULATOR	EA.

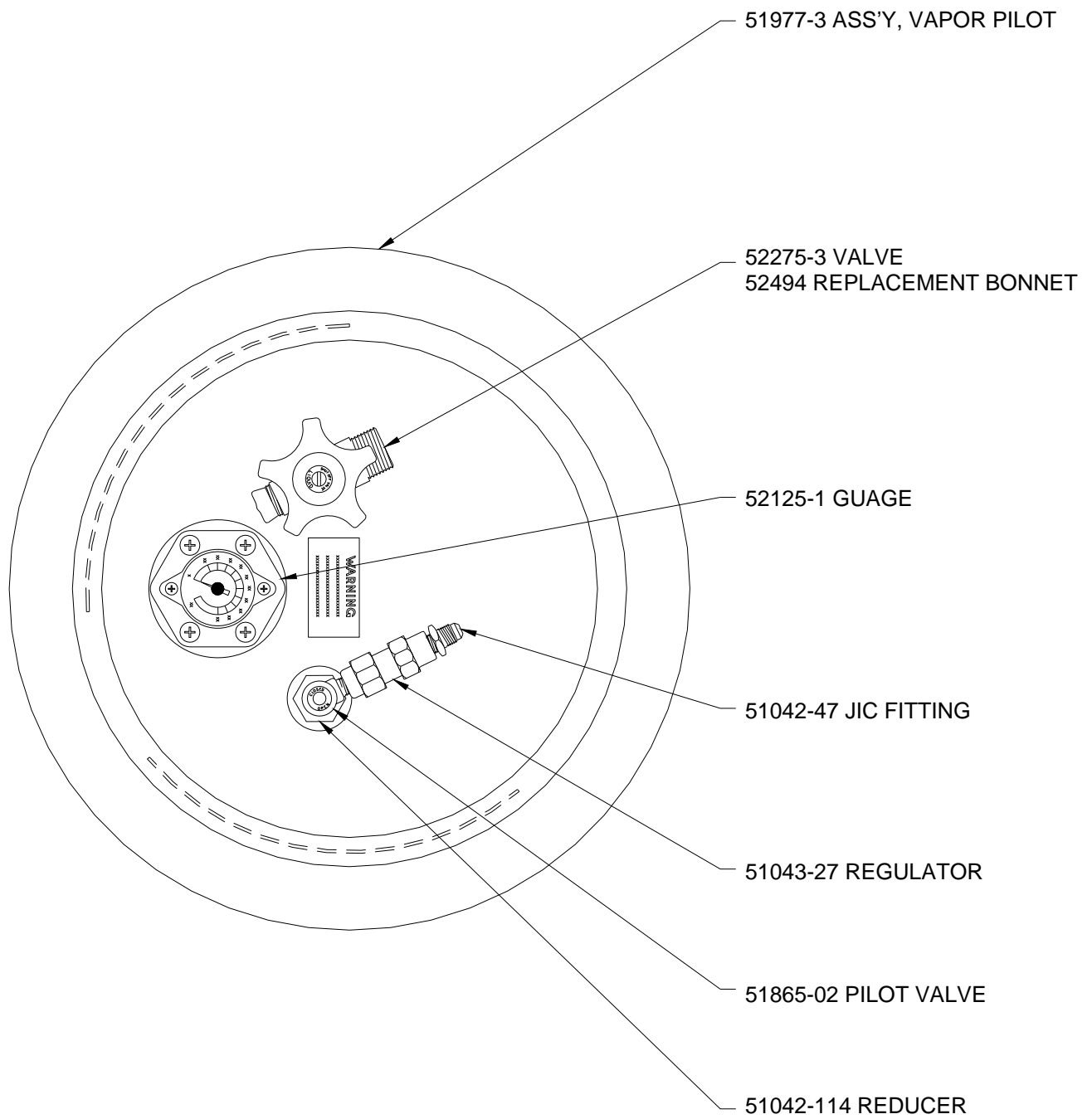
PART NUMBER		DESCRIPTION	UNITS
51043	- 27	REGULATOR, SHERWOOD SELPAC YR3701BA	EA.
51043	- 29	VALVE, HOKE 1523M4B1, NO HANDLE	EA.
51043	- 36	BLEEDER KNOB	EA.
51052	- 3	MINNITRIM, BLACK	FT.
51078		FUEL LINE PILOT	EA.
51081		FUEL LINE MAIN SUPPLY	EA.
51478		FUEL LINE MAIN RALLY DUAL	OBSOLETE
51480	- 1	FUEL LINE METERING VALVE 66 IN	EA.
51480	- 2	FUEL LINE METERING VALVE 72 IN	EA.
51480	- 3	FUEL LINE METERING VALVE 80 IN	EA.
51480	- 4	FUEL LINE METERING VALVE 87 IN	EA.
51865	- 1	VALVE, NUPRO B-4JNR2	EA.
51865	- 2	VALVE, NUPRO B-4JNR2 GREEN	EA.
51865	- 3	VALVE, NUPRO B-4JNR2 RED	EA.
51908		WASHER, SS .50 ID X 1.131 OD	EA.
51948		FUEL LINE HYBRID	EA.
51977	- 1	TANK ASSEMBLY, V-15 DUAL SERVICE	EA.
51977	- 2	TANK ASSEMBLY, V-15 SINGLE SERVICE	EA.
51977	- 3	TANK ASSEMBLY, V-15 VAPOR PILOT	EA.
52124		VALVE, V15 METERING W/DIP TUBE	EA.
52125	- 1	GAUGE, V15 GAL JA204N	EA.
52125	- 3	GAUGE, V23 GAL JA343A	EA.
52125	- 4	GAUGE, V18 GAL	EA.
52134	- 1	FUEL LINE, TANK HOSE 77 IN	EA.
52134	- 2	FUEL LINE, TANK HOSE 40 1/2 IN	EA.
52134	- 3	FUEL LINE, TANK HOSE 29 IN	EA.
52134	- 4	FUEL LINE, TANK HOSE 37 3/4 IN	EA.
52134	- 5	FUEL LINE, TANK HOSE 54 IN	EA.
52134	- 6	FUEL LINE, TANK HOSE 23 IN	EA.
52134	- 7	FUEL LINE, TANK HOSE 94 IN	EA.
52134	- 8	FUEL LINE, TANK HOSE 61-1/2 IN	EA.
52134	- 9	FUEL LINE, TANK HOSE 13 IN	EA.
52134	- 10	FUEL LINE, TANK HOSE 33 IN	EA.
52160	- 1	FUEL LINE ASSEMBLY, SINGLE 2-V RWS/RWSW/CW/CWS	EA.
52160	- 2	FUEL LINE ASSEMBLY, SINGLE 3-V RWS/RWSW/CW/CWS	EA.
52160	- 4	FUEL LINE ASSEMBLY, DUAL 2-V RWS/RWSW/CW/CWS	EA.
52160	- 5	FUEL LINE ASSEMBLY, DUAL 3-V RWS/RWSW/CW/CWS	EA.
52160	- 6	FUEL LINE ASSEMBLY, DUAL 4-V RWS/RWSW/CW/CWS	EA.
52160	- 7	FUEL LINE ASSEMBLY, DUAL 2-H RWSW/CW/CWS	EA.
52160	- 8	FUEL LINE ASSEMBLY 1-H ELS	EA.
52160	- 9	FUEL LINE ASSEMBLY 2-V ELS	EA.
52160	- 10	FUEL LINE ASSEMBLY, DUAL 2 V/H RWSW/ CW/ CWS	EA.
52160	- 11	FUEL LINE ASSEMBLY, DUAL 1 V/H RWSW/ CW/ CWS	EA.
52160	- 12	FUEL LINE ASSEMBLY, ELS BURNER V15/H20	EA.
52160	- 13	FUEL LINE ASSEMBLY, SINGLE V/H RWSW/ CW/ CWS	EA.
52160	- 14	FUEL LINE ASSEMBLY, SINGLE 2 V/H RWSW/ CW/ CWS	EA.
52160	- 15	FUEL LINE ASSEMBLY, SINGLE 2H CW/ CWS	EA.
52160	- 16	FUEL LINE ASSEMBLY, DUAL 3 V RB5	EA.
52160	- 17	FUEL LINE ASSEMBLY, TRIPLE 3 V RB5	EA.
52160	- 18	FUEL LINE ASSEMBLY, DUAL 2 V RB6	EA.
52160	- 19	FUEL LINE ASSEMBLY, TRIPLE 3 V RB6	EA.
52160	- 20	FUEL LINE ASSEMBLY, DUAL 3 V RB8	EA.
52160	- 21	FUEL LINE ASSEMBLY, TRIPLE 3 V RB8	EA.
52275	- 1	VALVE, CYLINDER H20 ALLOY	EA.
52275	- 2	VALVE, CYLINDER H20 MVE	EA.
52275	- 3	VALVE, CYLINDER V15, DUAL SERVICE	EA.
52275	- 4	VALVE, CYLINDER V15, SINGLE SERVICE	EA.

PART NUMBER		DESCRIPTION	UNITS
52275	- 6	VALVE, CYLINDER V23	EA.
52275	- 7	VALVE, CYLINDER V18, SINGLE SERVICE	EA.
52275	- 8	VALVE, CYLINDER V18, DUAL SERVICE	EA.
52427	- 1	TANK ASSEMBLY, V-23, SINGLE SERVICE	EA.
52446		DIP TUBE, ELS / ELSS H20, H25 (BACKUP VALVE)	EA.
52472		FUEL LINE BURNER ELS	EA.
52494		VALVE, SHERWOOD BONNET ASSEMBLY TANK	EA.
52520	- 1	FUEL LINE, BURNER 85 IN RB	EA.
52520	- 2	FUEL LINE, BURNER 97 IN RB	EA.
52520	- 3	FUEL LINE, BURNER 120 IN RB	EA.
52520	- 4	FUEL LINE, BURNER 138 IN RB	EA.
52520	- 5	FUEL LINE, BURNER 88 IN RB	EA.
52520	- 6	FUEL LINE, BURNER 77 IN RB	EA.
52521	- 1	FUEL LINE, CROSSOVER 74 IN RB	EA.
52521	- 2	FUEL LINE, CROSSOVER 61 IN RB	EA.
52721		VALVE, BONNET ASSEMBLY REGO TANK VALVE	EA.
52891		FUEL LINE ASSEMBLY, RB5 SINGLE TANK 120"	EA.
52892		FUEL LINE ASSEMBLY, RB5 DOUBLE TANK 16"	EA.
52906		FUEL LINE, CWS COMBINATION	EA.
53037	- 1	FUEL TANK, V18 ASSEMBLY, SINGLE SERVICE	EA.
53037	- 2	FUEL TANK, V18 ASSEMBLY, DUAL SERVICE	EA.
53038		VALVE, WITH DIP TUBE V18 METERING	EA.
53038		VALVE, WITH DIP TUBE V18 LIQUID METER	EA.
53039		FUEL LINE, AURORA RETROFIT	EA.
53052		TANK, H25 ASSEMBLY	EA.



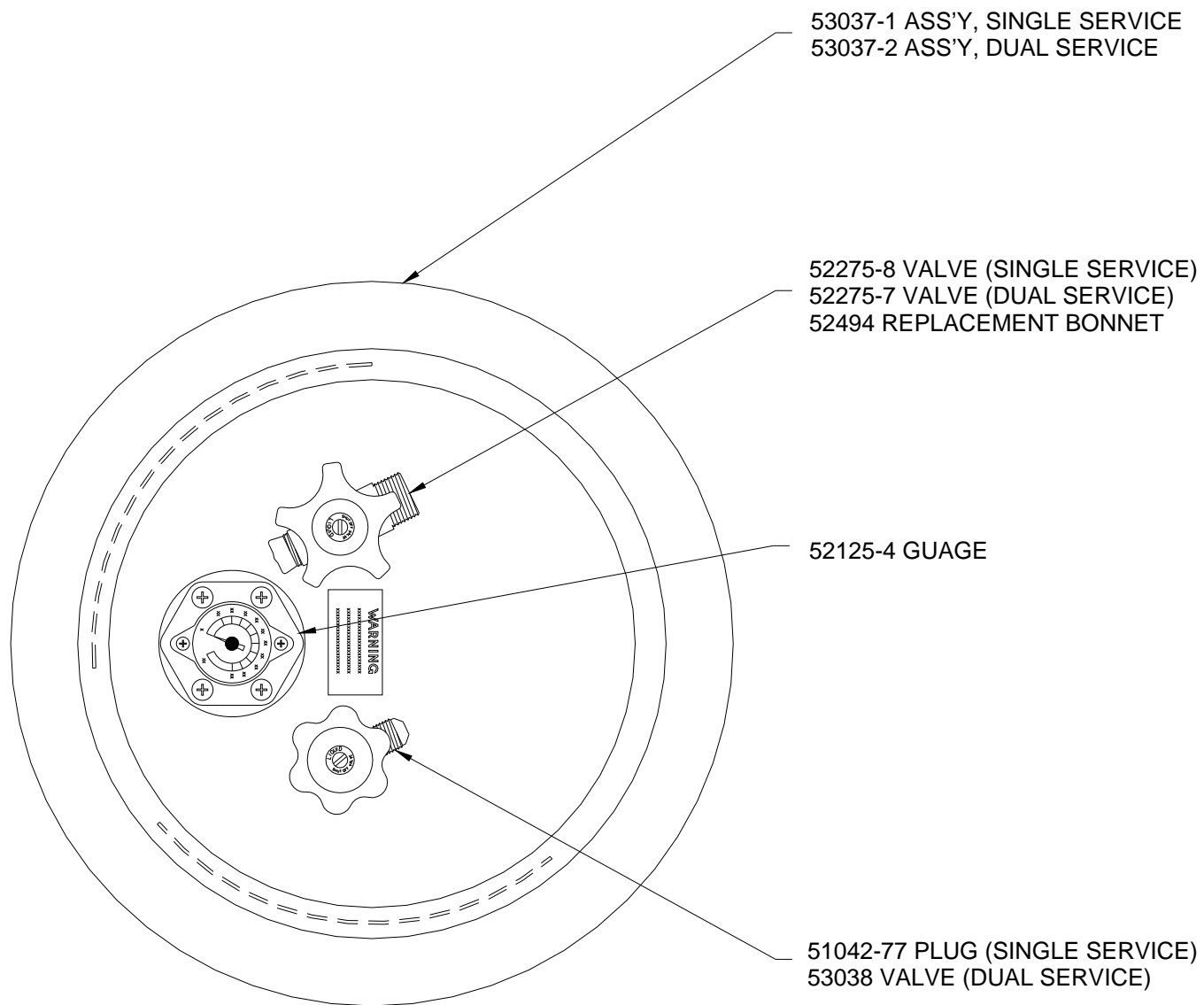
V15 TANK ASSEMBLY

Figure V15-1



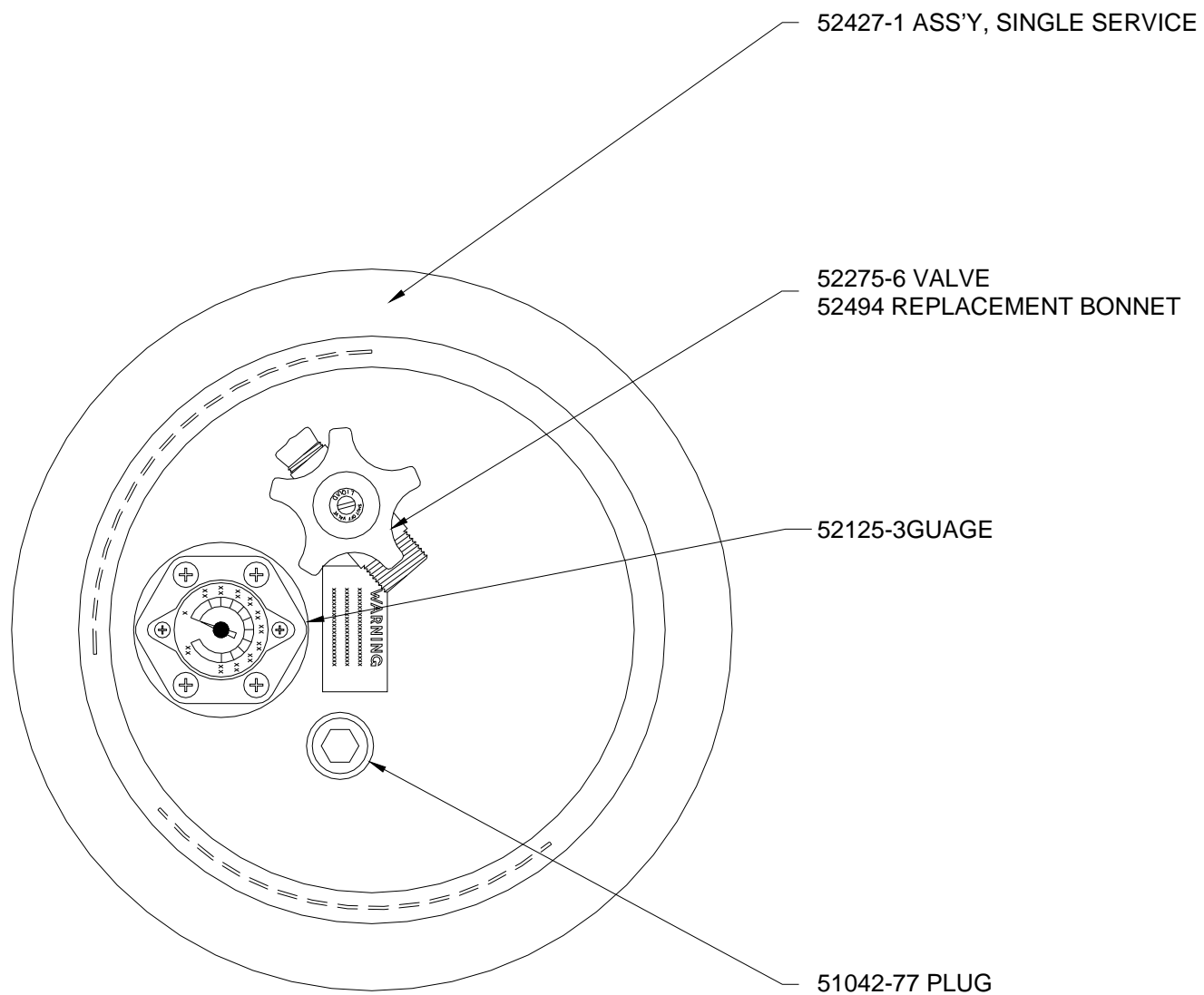
V15 TANK ASSEMBLY
Vapor Pilot

Figure V15-2



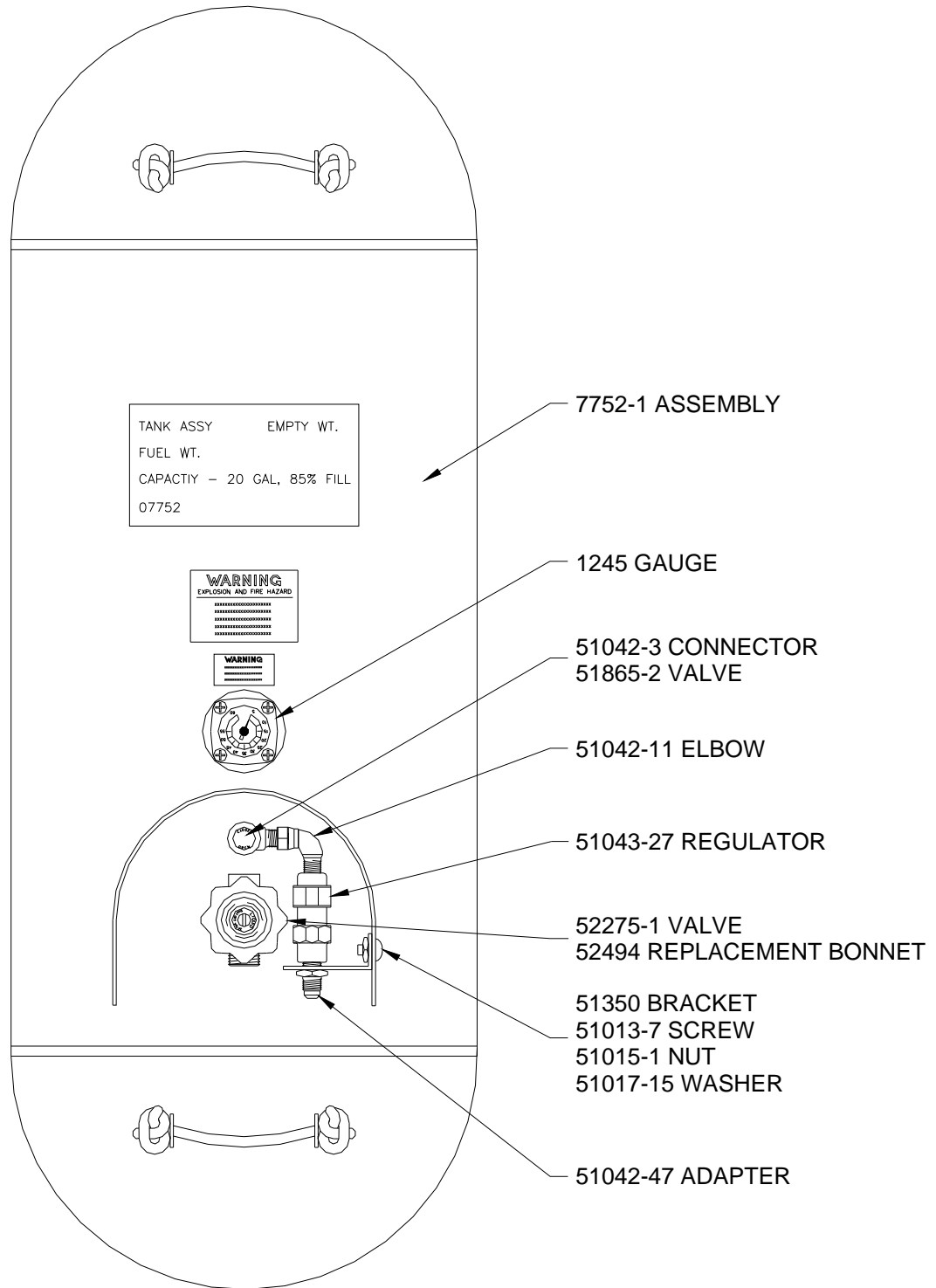
V-18 TANK ASSEMBLY

Figure V18-1



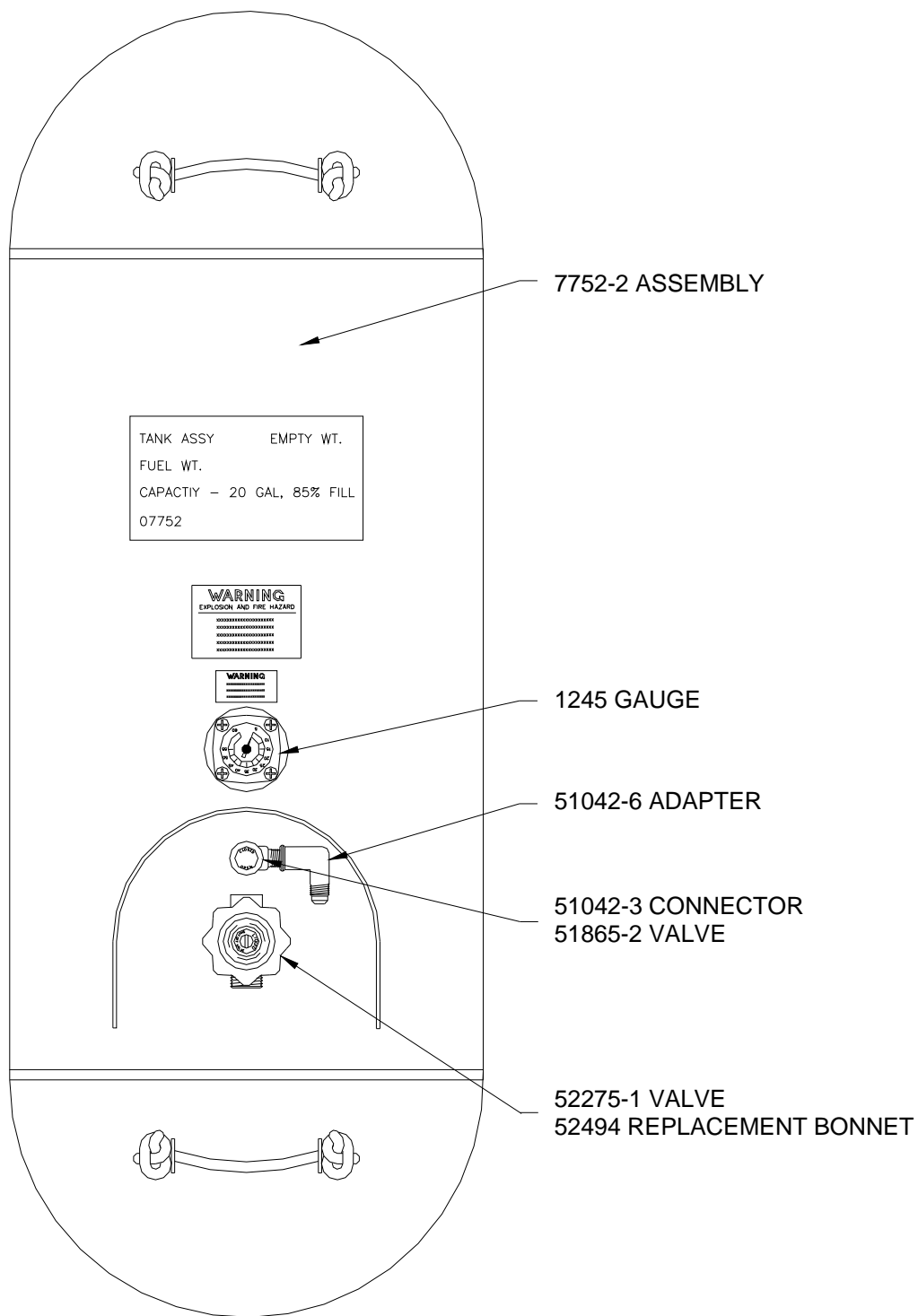
V-23 TANK ASSEMBLY

Figure V23-1



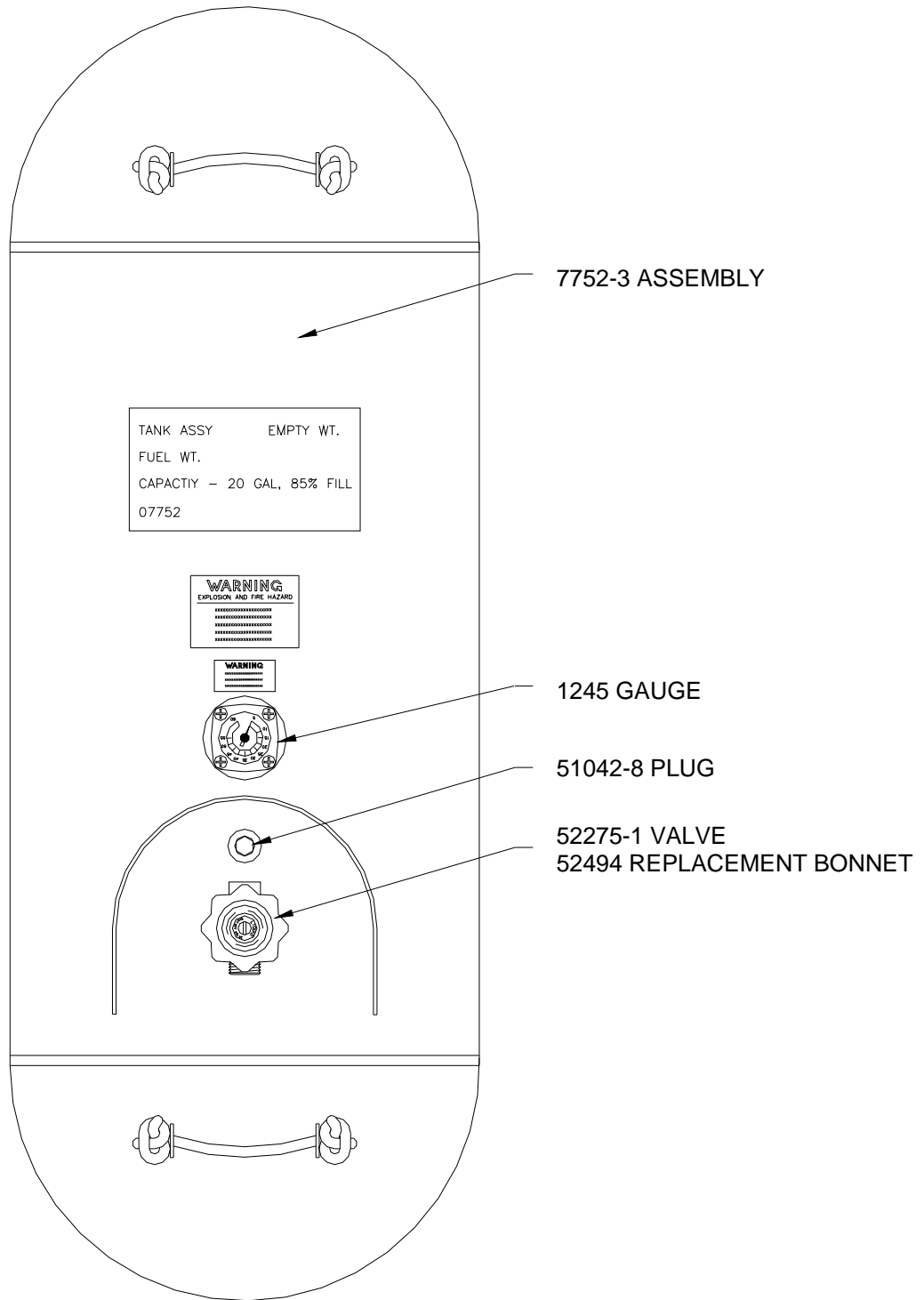
H-20 TANK ASSEMBLY

Figure H20-1



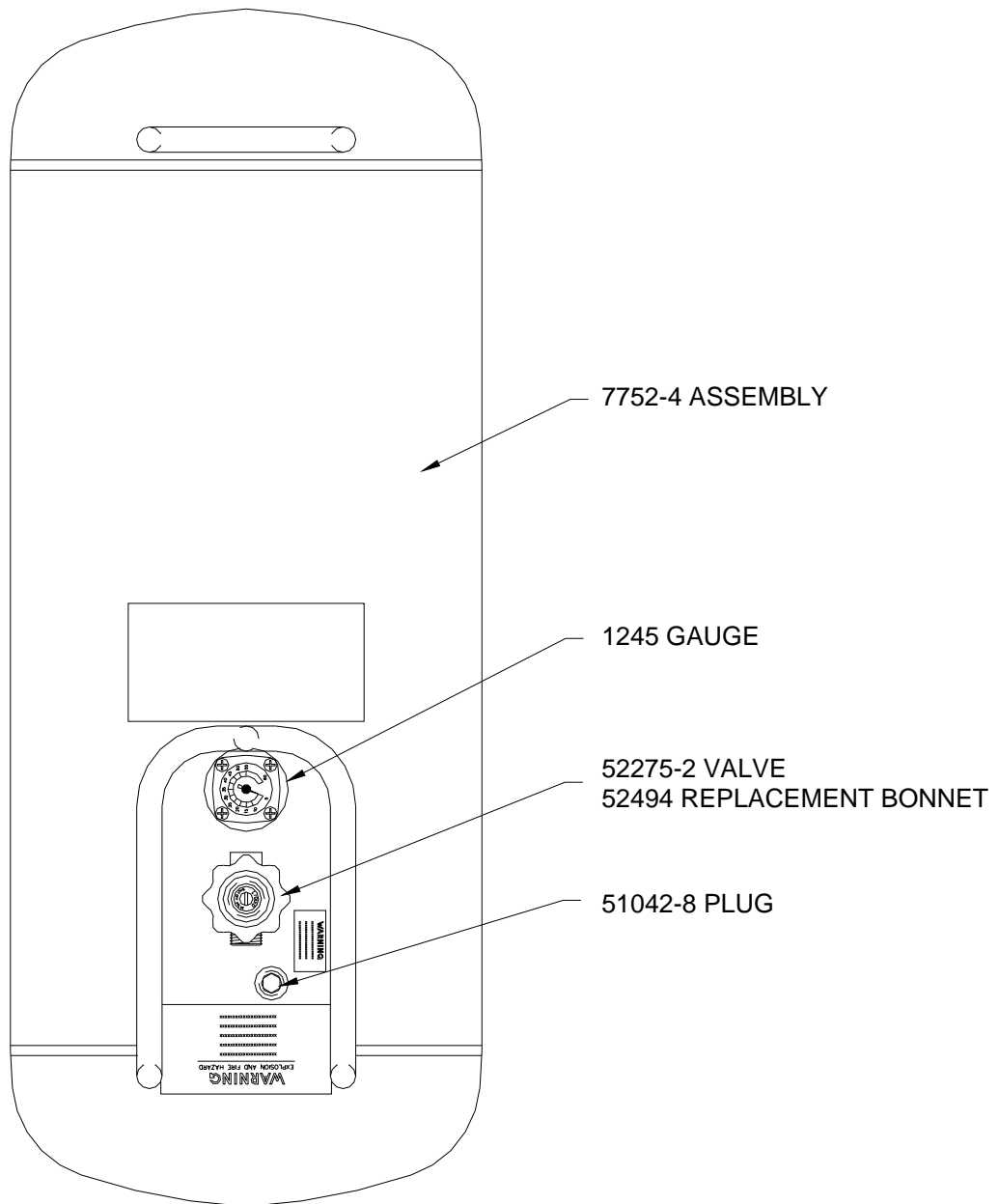
H-20 TANK ASSEMBLY

Figure H20-2



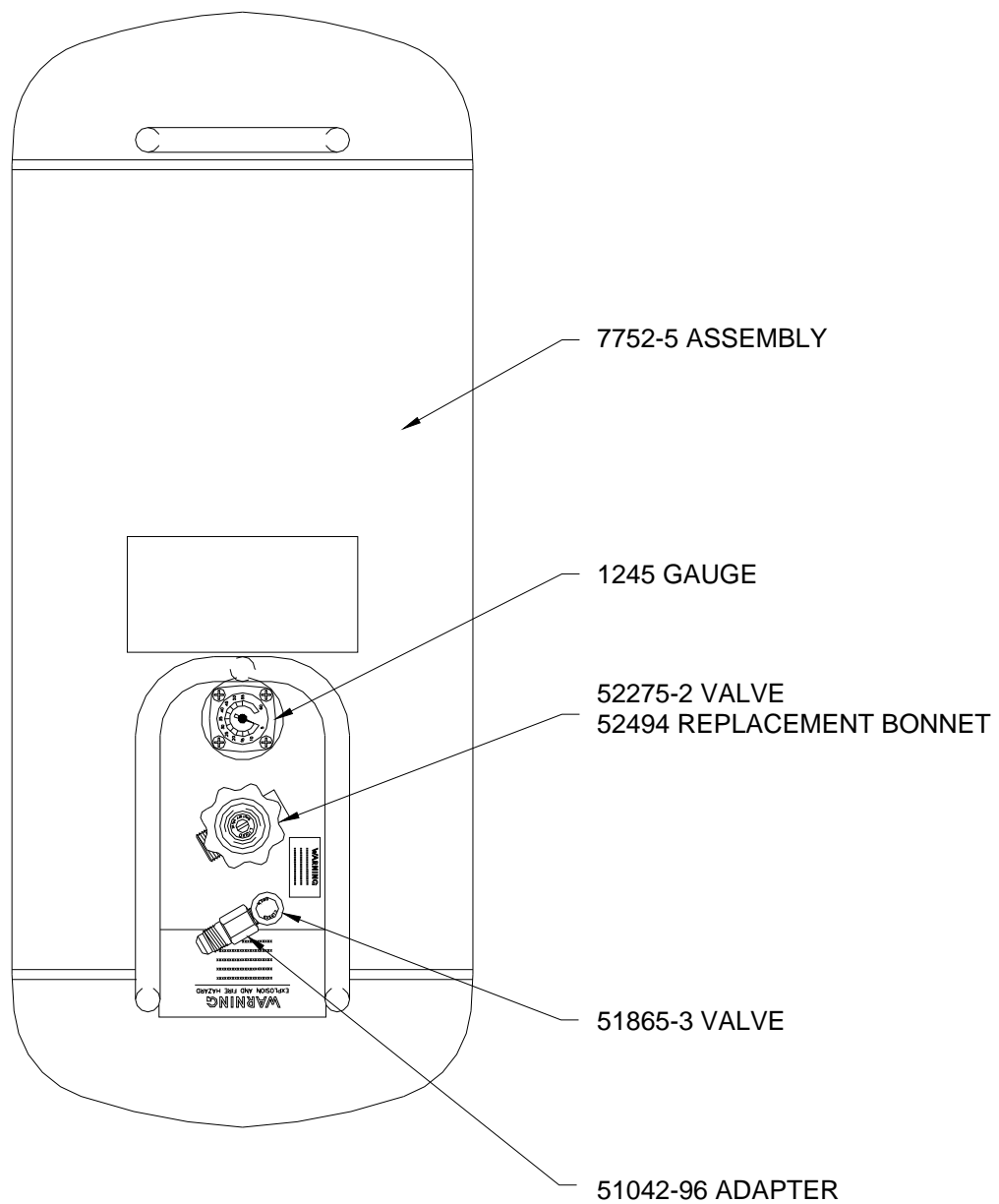
H-20 TANK ASSEMBLY

Figure H20-3



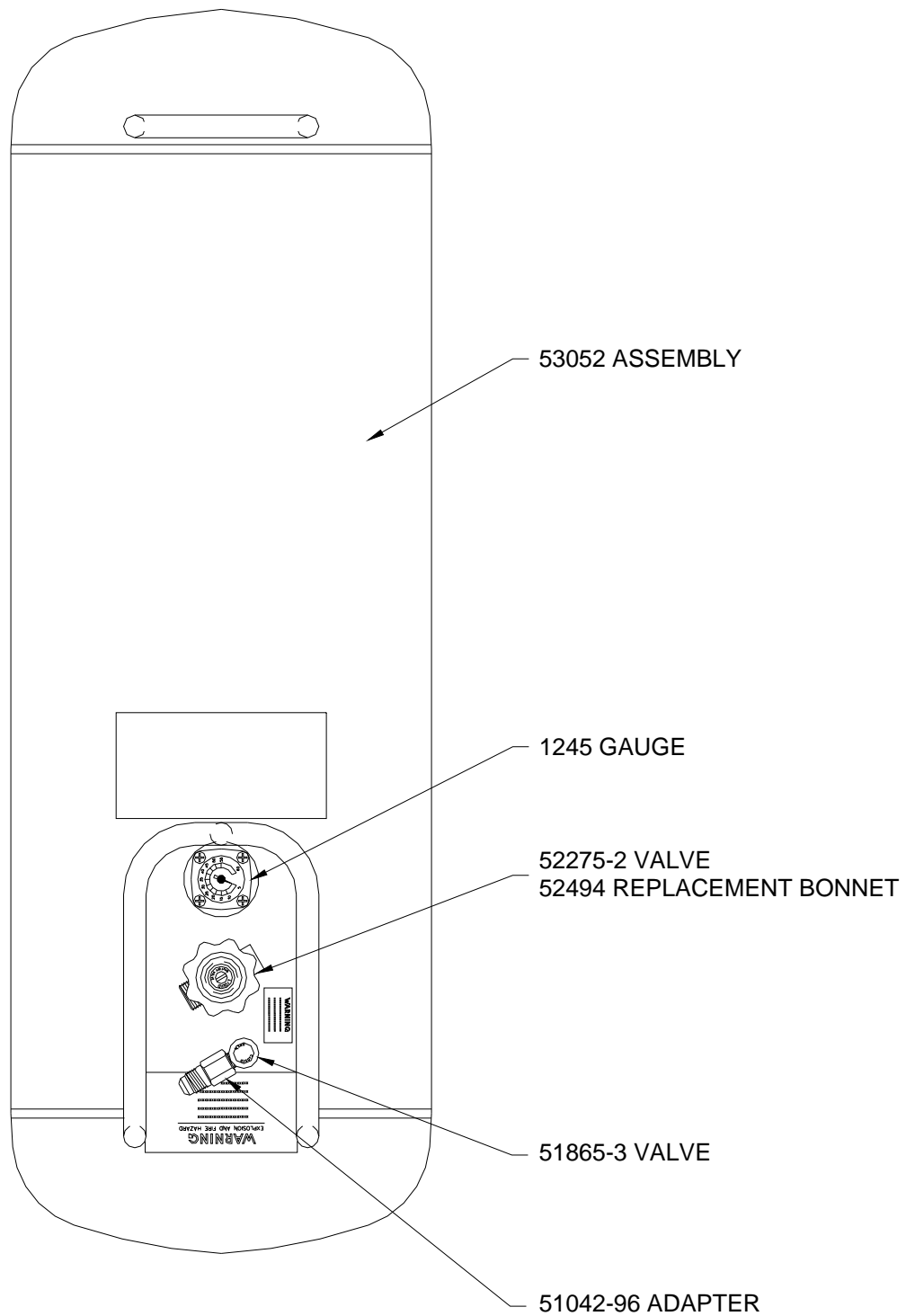
H-20 TANK ASSEMBLY

Figure H20-4



H-20 TANK ASSEMBLY

Figure H20-5



H-25 TANK ASSEMBLY

Figure H25-1

[illegible]

NOTES:


1. USE SEALANT, ITEM 11 ON MALE THREADS.
2. LEAK TEST IN ACCORDANCE WITH ABADS 1137.
3. FITTINGS FOR CONNECTING FUEL LINES TO TANKS TO BE ASSEMBLED IN ACCORDANCE WITH DESIGNATION BY DIAMOND SYMBOL ().
4. -3 NOT IN USE.

Figure FL1

FUEL FITTING CONFIGURATIONS

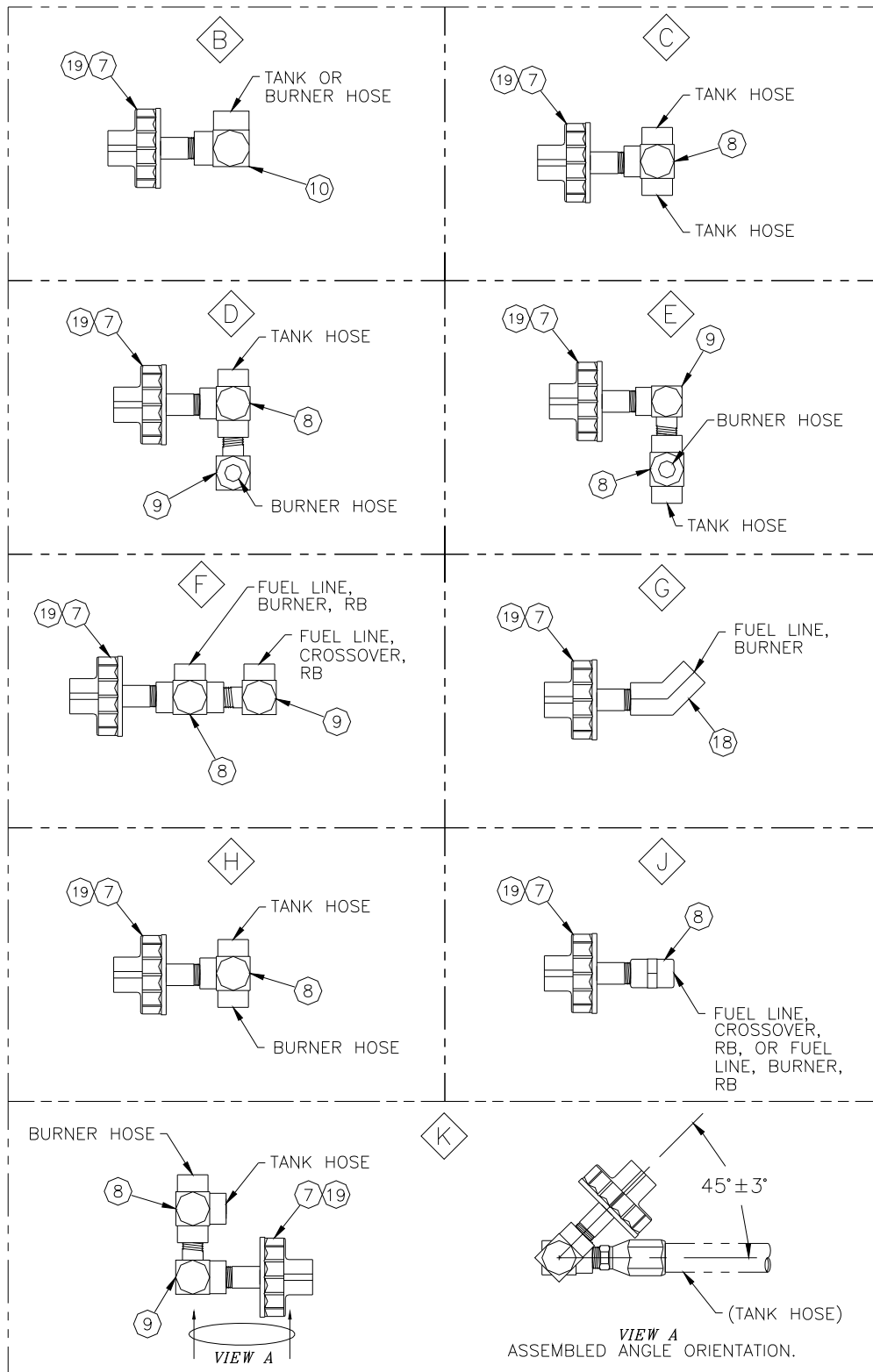


Figure FL2

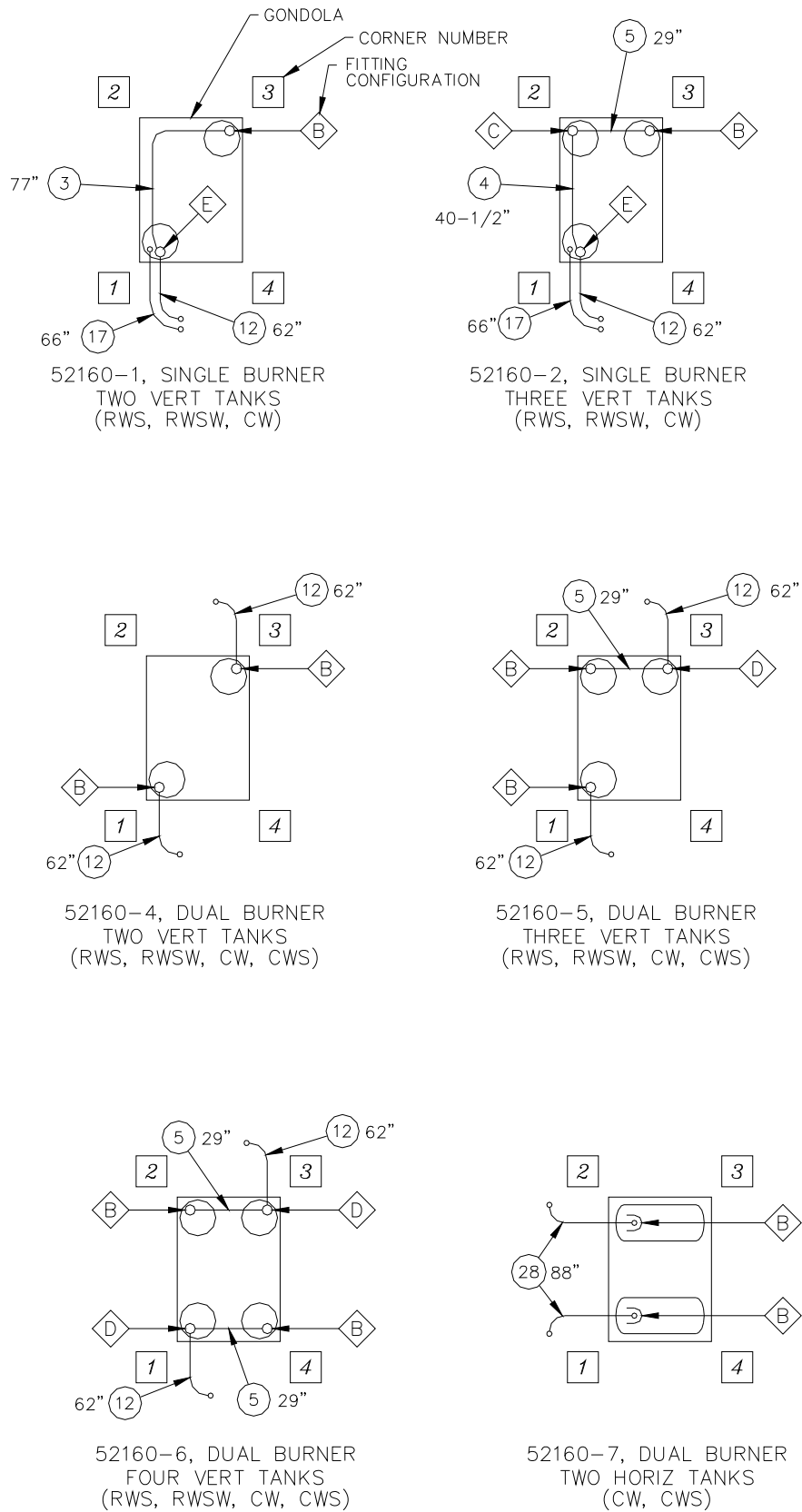
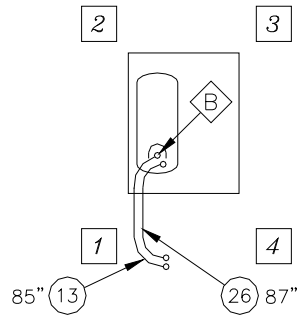
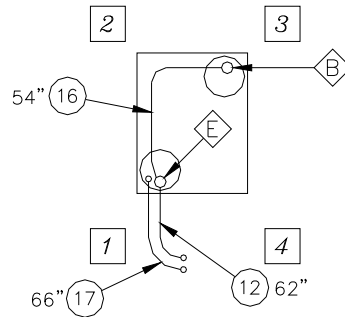


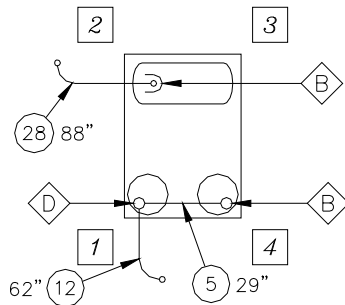
Figure FL3



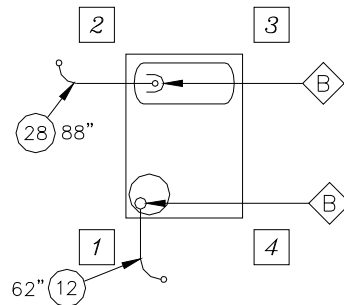
52160-8, ELS BURNER
ONE HORIZ TANK
(ELS, ELSS)



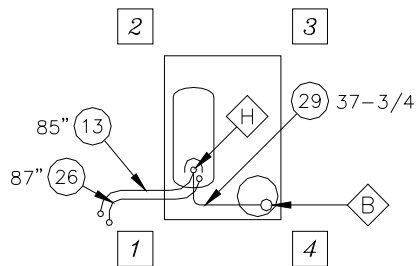
52160-9, ELS BURNER
TWO VERT TANKS
(ELS)



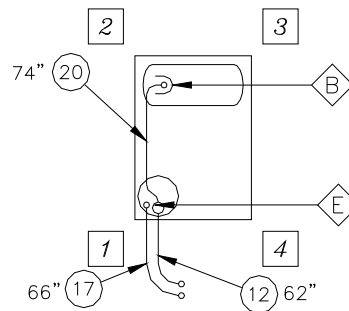
52160-10, DUAL BURNER
TWO VERT TANKS,
ONE HORIZ TANK
(RWSW, CW, CWS)



52160-11, DUAL BURNER
ONE VERT TANK,
ONE HORIZ TANK
(RWSW, CW, CWS)

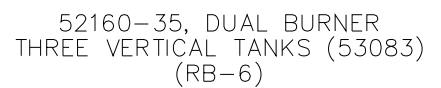
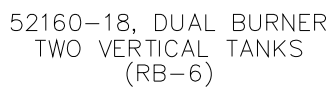
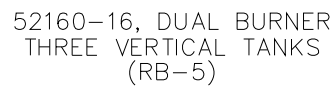
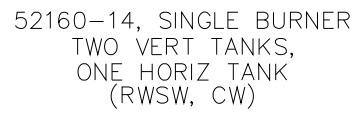


52160-12, ELS BURNER
ONE VERT TANK,
ONE HORIZ TANK
(ELS, ELSS)

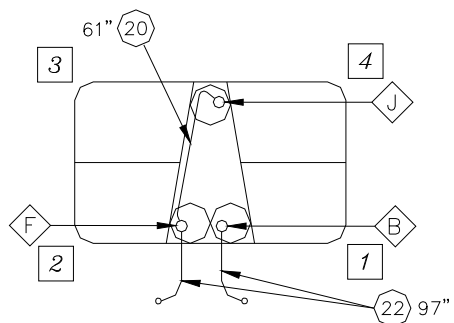


52160-13, SINGLE BURNER
ONE VERT TANK,
ONE HORIZ TANK
(RWSW, CW)

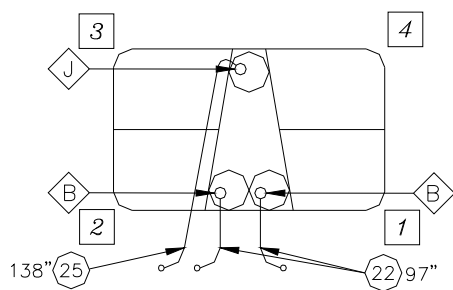
Figure FL4



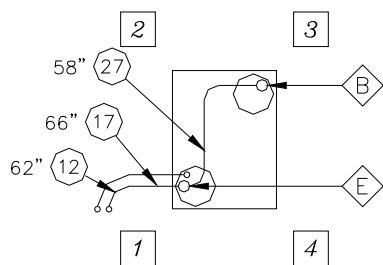
Page 19
February 1, 2008



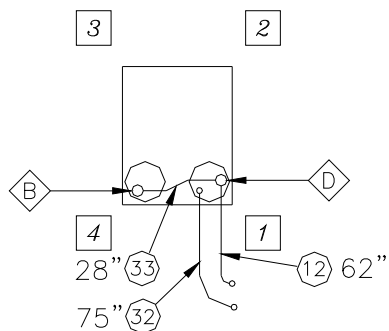
52160-20, DUAL BURNER
THREE VERTICAL TANKS
(RB-8, RB-12)



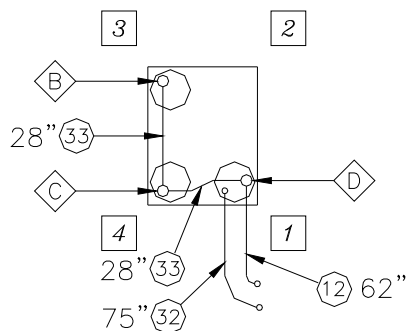
52160-21, TRIPLE BURNER
THREE VERTICAL TANKS
(RB-8, RB-12)



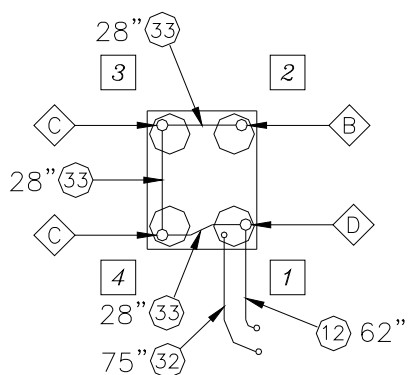
52160-22, ELS BURNER
TWO VERT TANKS,
(ELSS)



52160-23 RALLY BURNER
TWO VERT TANKS
(RW)



52160-24 RALLY BURNER
THREE VERT TANKS
(RW)



52160-25 RALLY BURNER
FOUR VERT TANKS
(RW)

Figure FL6

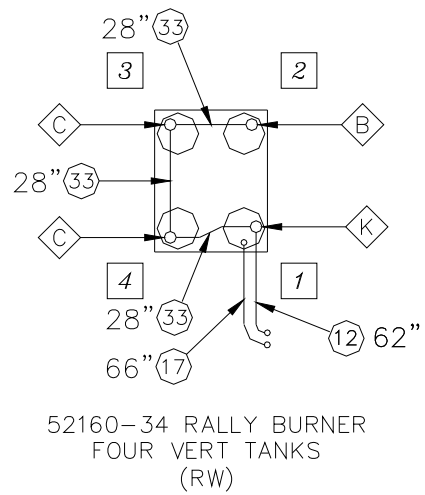
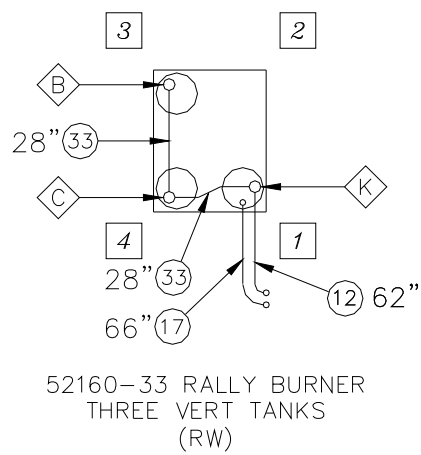
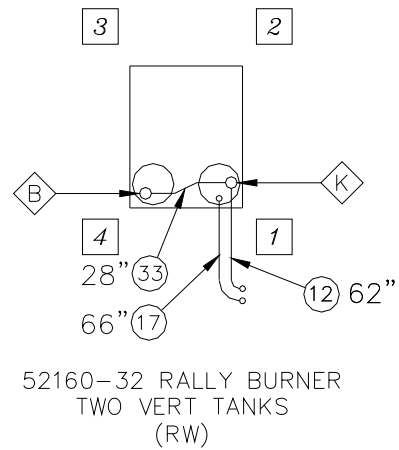
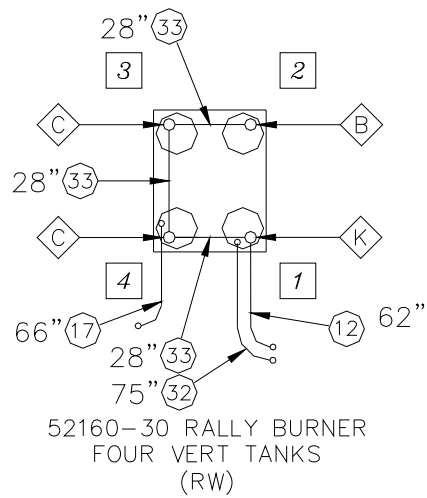
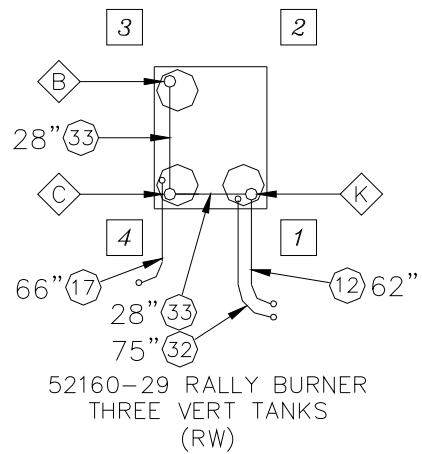
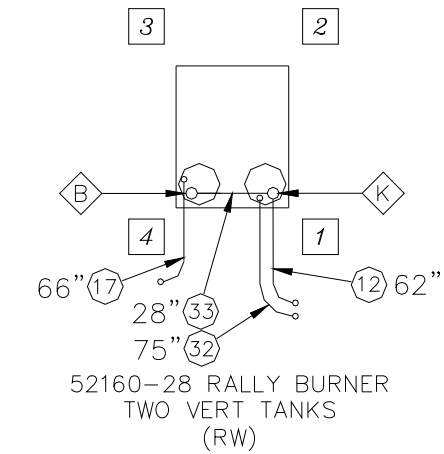


Figure FL7