



PARTS MANUAL

(Parts Subject to Availability)

RALLY BURNER

MODEL "HP2R"

P/N 17399

&

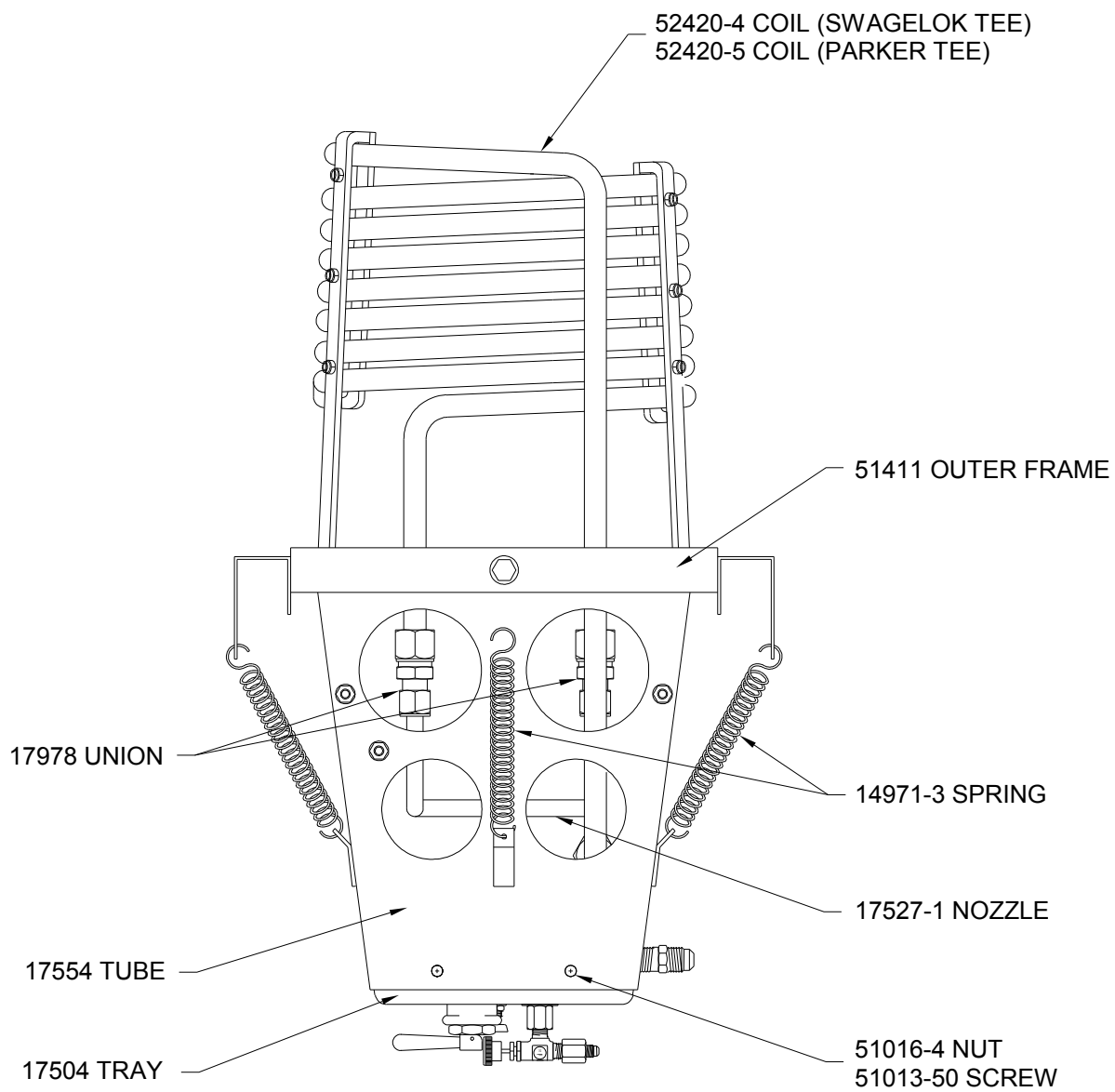
MODEL "HP2R"

DUAL INLET

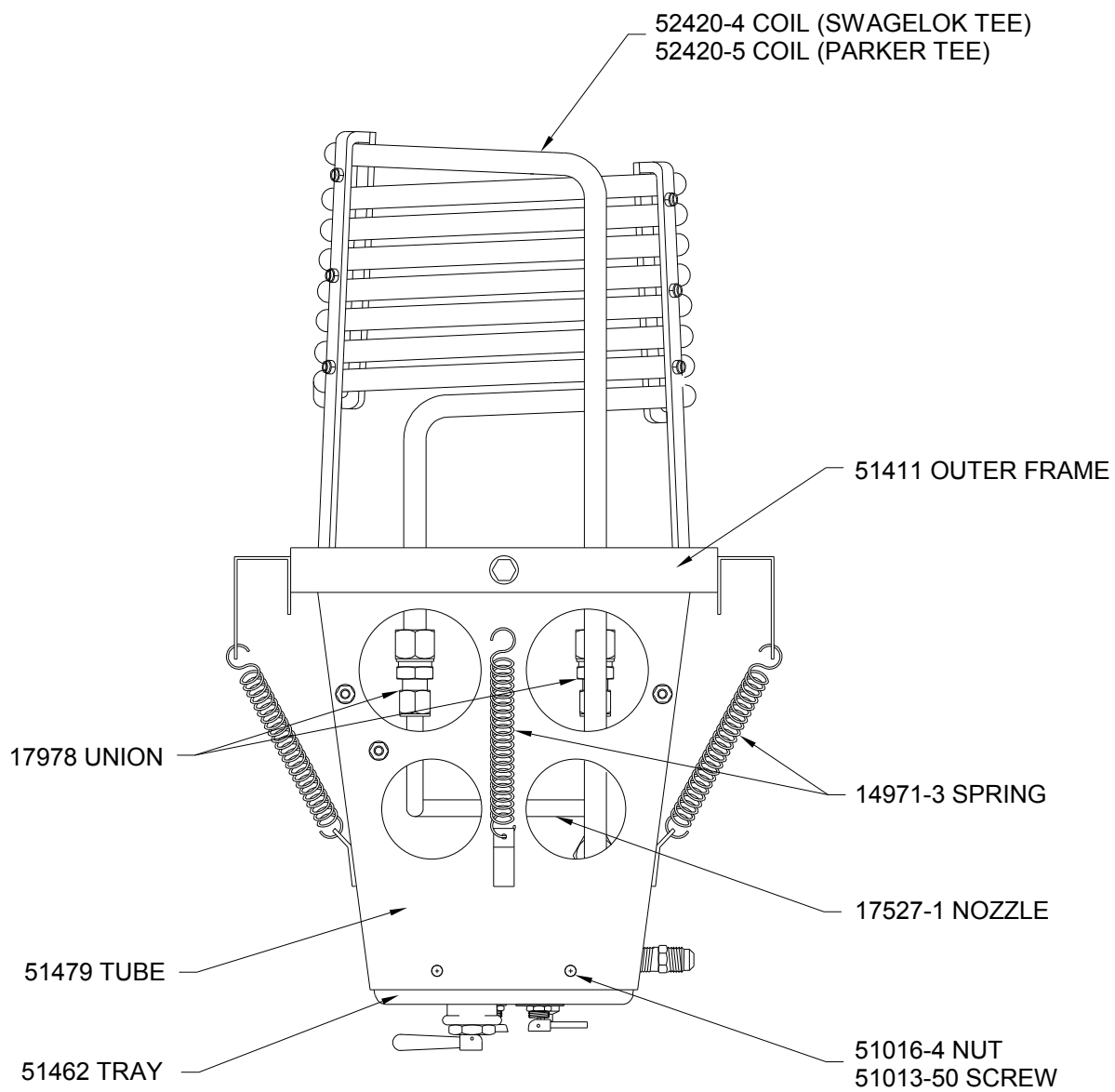
P/N 51464

PART NUMBER		DESCRIPTION	UNITS
1001	- 1	VALVE, HOKE NO HANDLE	EA.
13136	- 3	SPACER, GIMBAL	OBSOLETE
14971	- 3	SPRING, EXTENSION LEE LE-069F-6S	EA.
16557		PILOT ORIFICE DRILLED	EA.
17463		COIL SUPPORT INNER, REV. C	EA.
17464	- 1	COIL SUPPORT OUTER-SHORT	EA.
17464	- 2	COIL SUPPORT OUTER-LONG	EA.
17504		TRAY BURNER	OBSOLETE
17505		FITTING, MODIFIED TEE	EA.
17506		WASHER, RUBBER BLAST VALVE	EA.
17519		WASHER, BACKUP BLAST VALVE	EA.
17527	- 1	NOZZLE COIL W/ASPIRATOR	EA.
17529		BRACKET, VALVE HOLD DOWN	OBSOLETE
17531		CLAMP, STANDOFF COIL	EA.
17554		SQUARE TUBE, HP2R	OBSOLETE
17978		UNION RESTRICTED	EA.
51002	- 10	COPPER TUBE .125OD X .030 WALL	FT.
51012	- 5	POP RIVET AD42BS	EA.
51013	- 36	SCREW, MACHINE 10-32 X 5/8	EA.
51013	- 37	SCREW, MACHINE 10-32 X 3/4	EA.
51013	- 40	SCREW, 10-32 X 1 1/2 HEX HEAD SS	EA.
51013	- 48	SCREW, MACHINE 10-32 X 3/8	EA.
51013	- 50	SCREW, PAN HEAD 10-24 X 3/8	EA.
51013	- 75	SCREW, FLAT HEAD MACHINE 10-32 X 5/8	EA.
51013	- 84	SCREW, PAN HD 2-56 X 1IN	EA.
51015	- 17	NUT, MS20365-428C 1/4-28	EA.
51015	- 19	NUT, MS20500-1032 HI TEMP	EA.
51015	- 35	NUT, LOCKING 2-56	OBSOLETE
51016	- 4	NUT, SPEED ARDEN C8044-1024-3B	EA.
51016	- 13	NUT, S.S. JAM NUT	OBSOLETE
51017	- 11	WASHER, 9/16" S.S.	OBSOLETE
51017	- 12	WASHER, 5/8 AN960C1016L	EA.
51017	- 15	WASHER, SS MS15795-841	EA.
51017	- 27	WASHER, 1/4	OBSOLETE
51017	- 28	WASHER, PLAIN 7/16	OBSOLETE
51017	- 30	SPACER, TEFLON 161 X. 250 X .050	EA.
51017	- 34	WASHER, 1.125OD X .450 ID X .048 THK	EA.
51017	- 35	WASHER, #2	OBSOLETE
51027	- 16	FIBERGLASS SLEEVE PIEZO	FT.
51031	- 15	CLAMP, LOOP TA715SS06	EA.
51034	- 6	O-RING, PARKER 2-007-N103-7	EA.
51040	- 17	KNOB, RED METER PHEN-4J-P5	EA.
51040	- 18	KNOB, GREEN PILOT PHEN-4J-P5	EA.
51040	- 55	GASKET, COPPER	EA.
51042	- 4	FITTING, STREET ELBOW 90 DEG.	EA.
51042	- 7	FITTING, FEMALE TEE 1/4 PIPE	EA.
51042	- 11	FITTING, ELBOW 90 DEG. SWIVEL 2047-4-4S	EA.
51042	- 12	FITTING, ADAPTER REDUCING 2083-6-4S	EA.
51042	- 13	FITTING, FEMALE TEE (SPECIAL) 8-86	OBSOLETE
51042	- 14	BULKHEAD	OBSOLETE
51042	- 15	FITTING, ADAPTER PIPE/JIC 2021-4-6S	EA.
51042	- 16	REDUCER	OBSOLETE
51042	- 17	FITTING, FEMALE ELBOW 2-25BZ-B	EA.
51042	- 18	FITTING, MALE ELBOW 2-2CBZ-B	EA.
51042	- 19	PLUMBING, MALE PIPE ELBOW	OBSOLETE
51042	- 20	FITTING, HEX NIPPLE 2083-4-4S	EA.

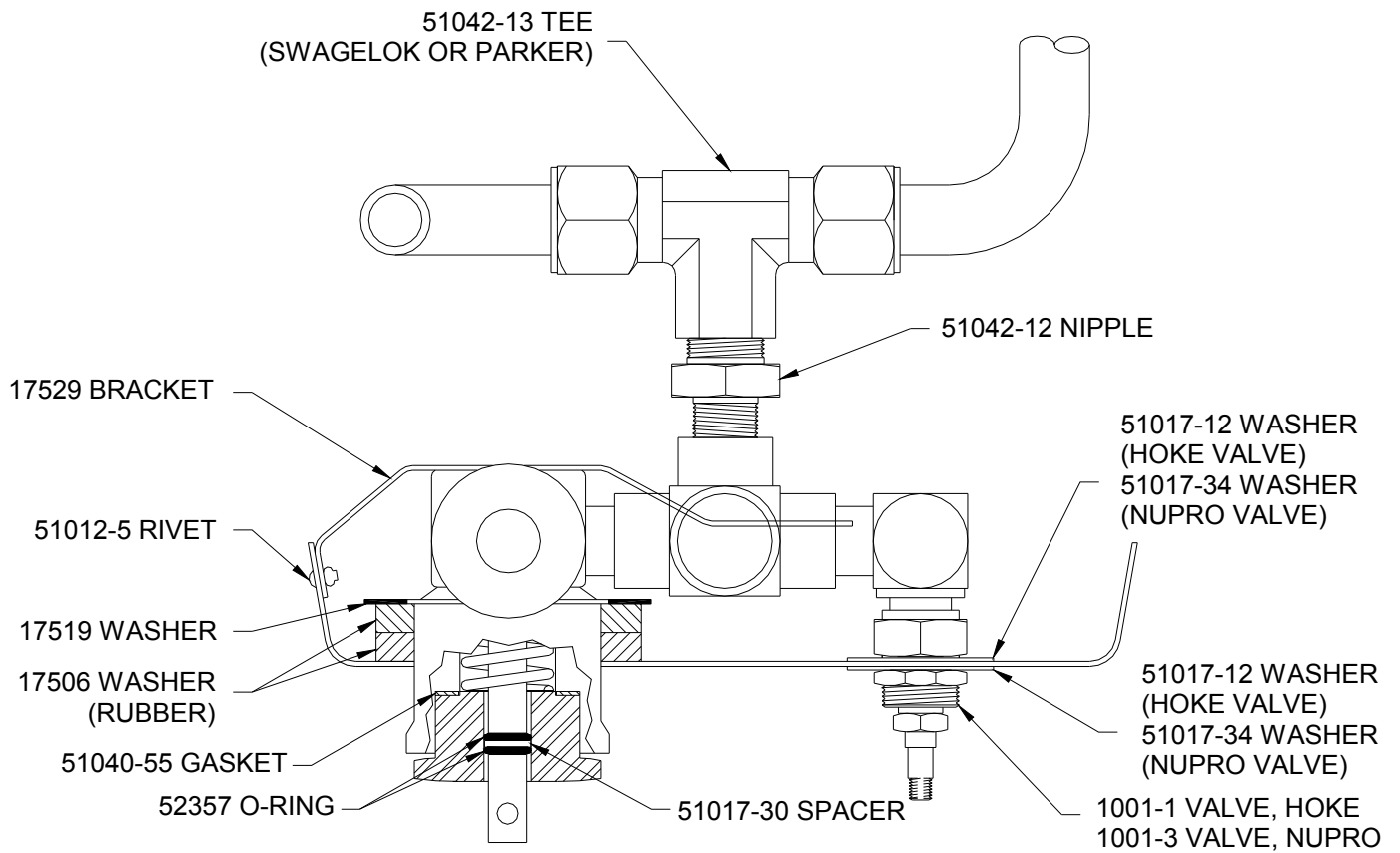
PART NUMBER		DESCRIPTION	UNITS
51042	- 21	FITTING, CLOSE NIPPLE 2084-4S-7/8	EA.
51042	- 39	FITTING, ADAPTER PIP/JIC 2022-4-4S	EA.
51042	- 49	FITTING, ADAPTER STRAIGHT 2000-4-6B	EA.
51042	- 78	FITTING, 45 DEG. STREET ELBOW	OBSOLETE
51043	- 6	FILTER, METEX 52-0110-F071-04	EA.
51043	- 26	REGULATOR PISTON	EA.
51043	- 32	VALVE, TOGGLE HANDLE ONLY SHERWOOD	OBSOLETE
51411		BURNER FRAME OUTER RALLY	OBSOLETE
51412		BURNER FRAME INNER RALLY	OBSOLETE
51462		TRAY, HP2R DUAL INLET	OBSOLETE
51470		PLUMBING, MODIFIED PIPE PLUG	OBSOLETE
51479		SQUARE TUBE, HP2R DUAL INLET	OBSOLETE
51865	- 2	VALVE, NUPRO B-4JNAR2 GREEN	EA.
51901		PILOT HEAD ASSEMBLY	EA.
51906		VALVE, PILOT TOGGLE HANDLE	OBSOLETE
51909		SLUG, PILOT	EA.
51911	- 1	WASHER, SLOTTED	OBSOLETE
51912		VALVE ASSEMBLY, MODIFIED	OBSOLETE
52380		VALVE, MODIFIED HOKE	EA.
52357		O-RING, BLAST VALVE	EA.
52420	- 4	HP11 COIL ASSY W/NUTS & FERS SW F	EA.
52420	- 5	HP11 COIL ASSY W/NUTS & FERS PARKER	EA.
52727		PRESSURE GAUGE KIT (REPLACEMENT WIKA)	EA.



BURNER ASSEMBLY
HP2R
Figure 2RB1



BURNER ASSEMBLY
HP2R DUAL INLET
Figure 2RB2



FUEL INLET SUPPORT, HP2R DUAL INLET

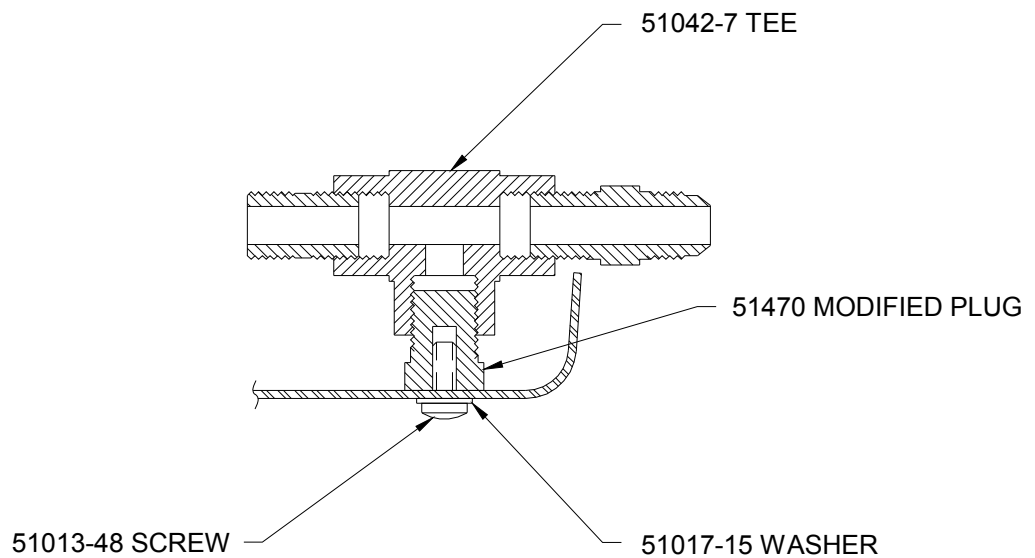
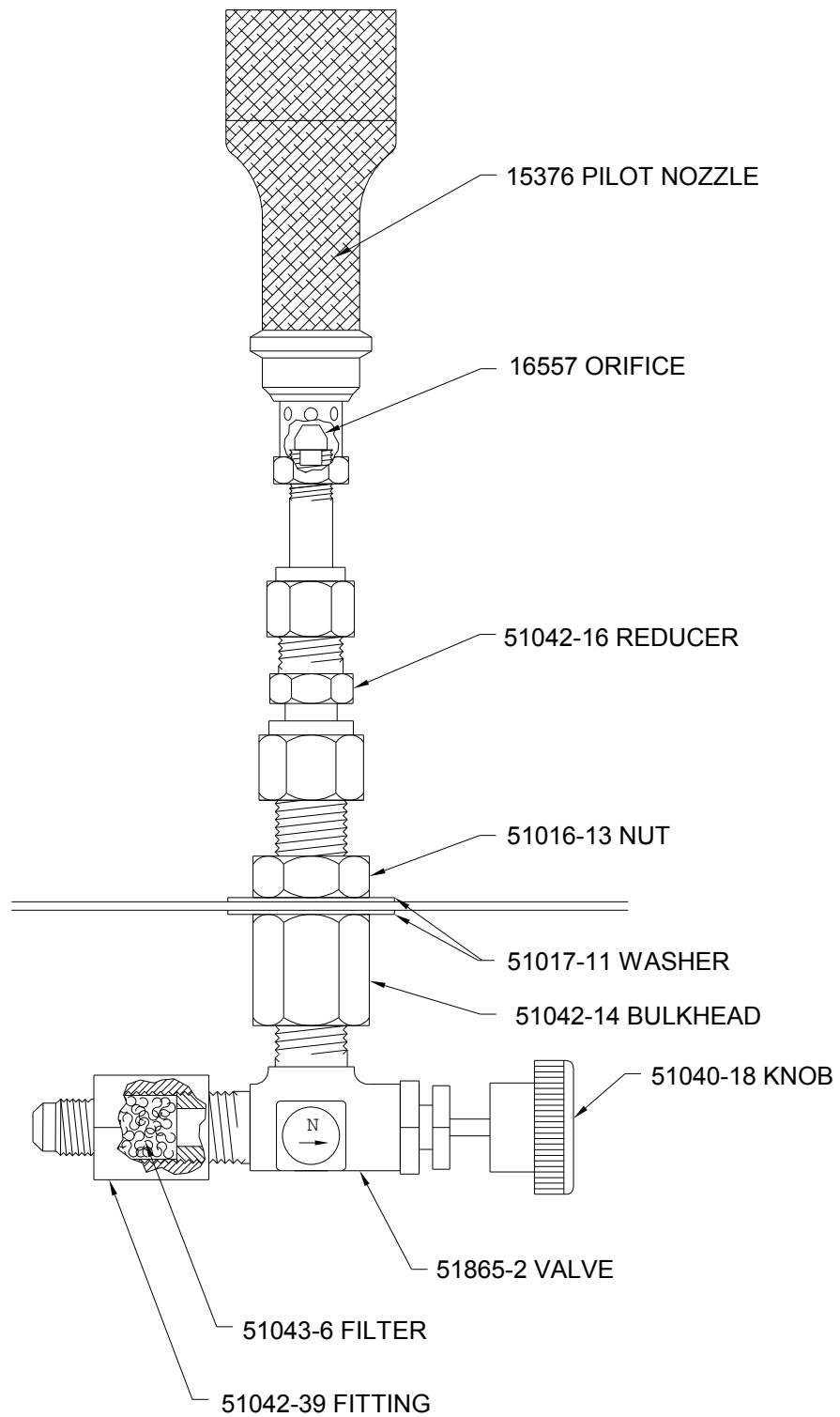
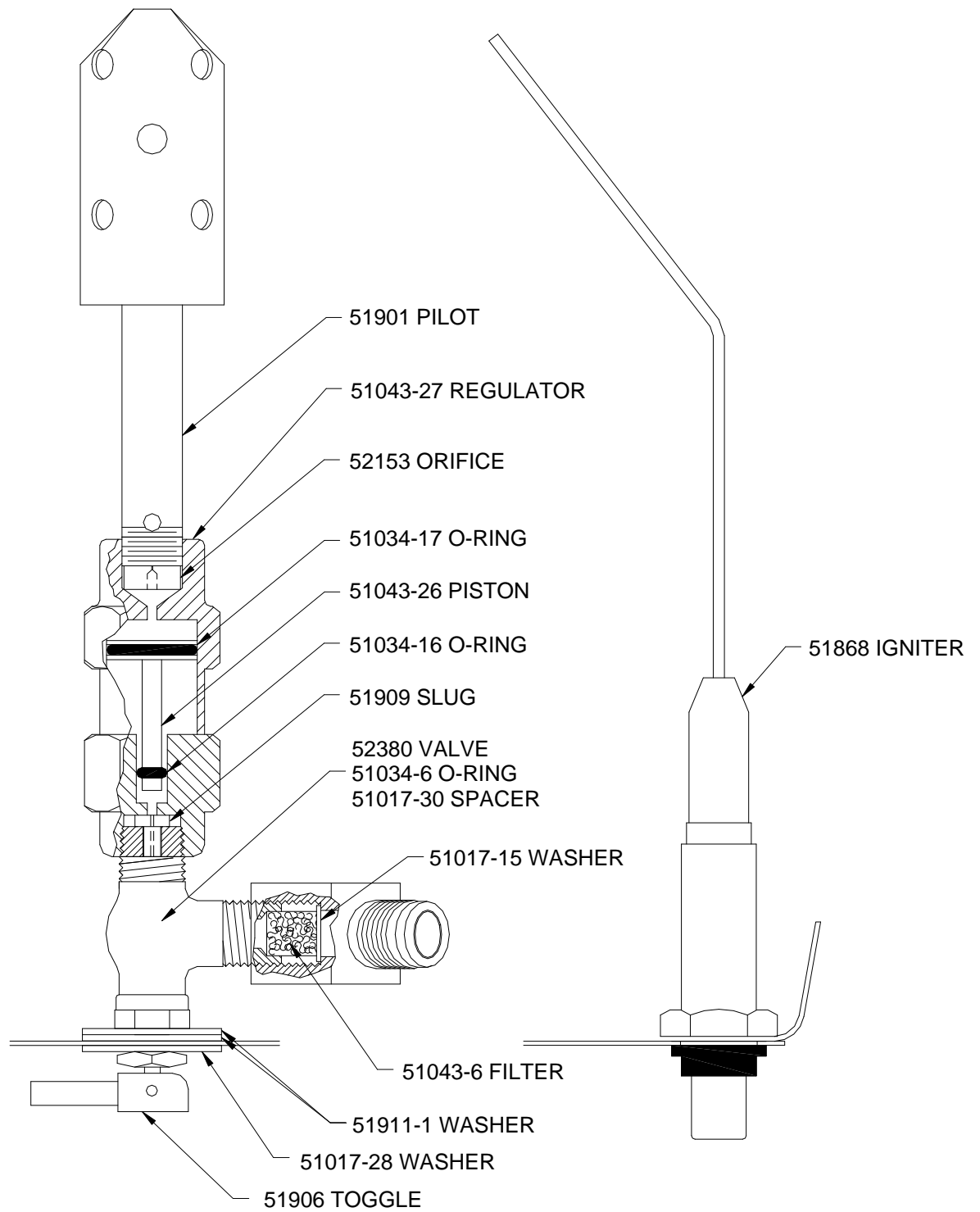


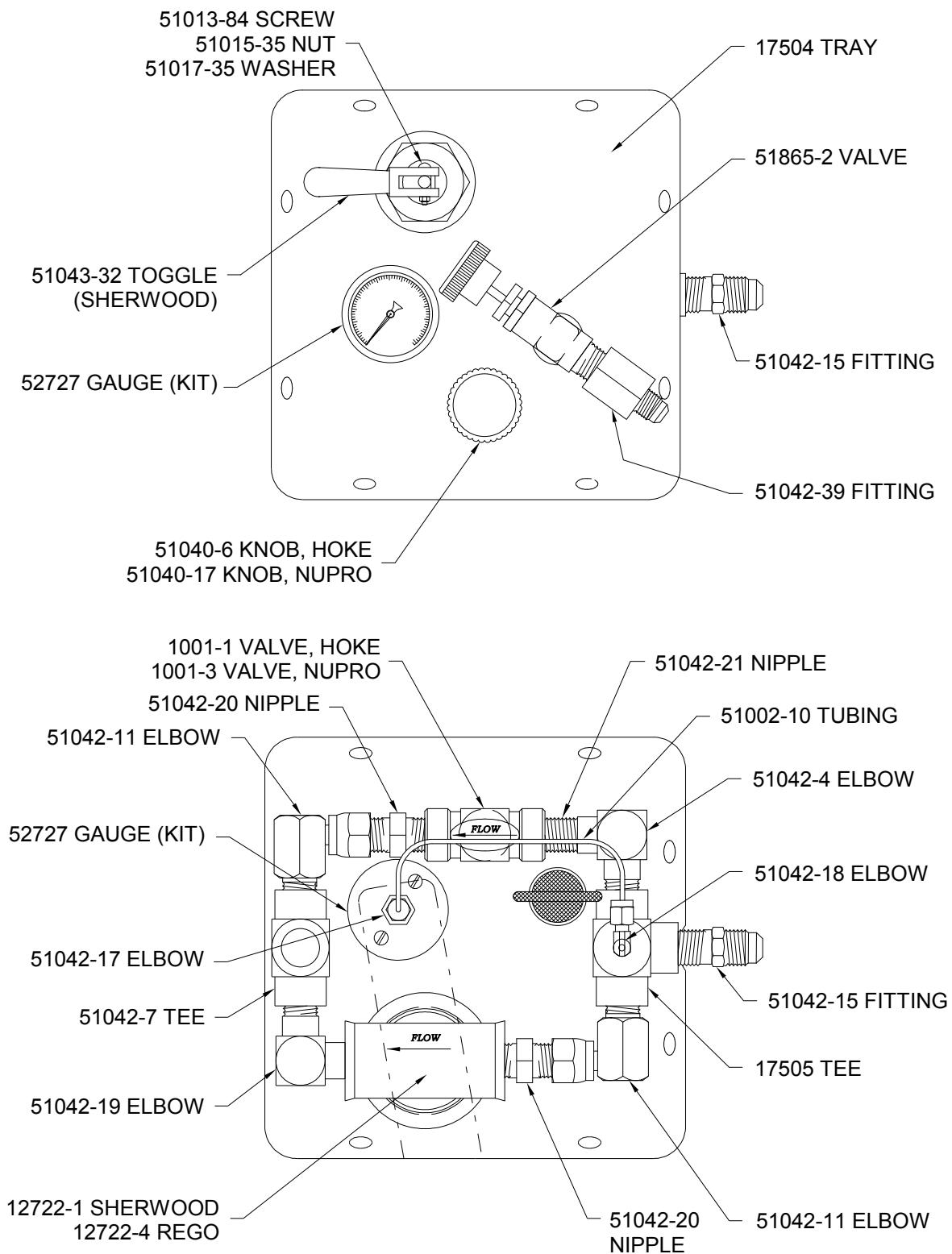
Figure 2RB3
Page 6
February 1, 2008



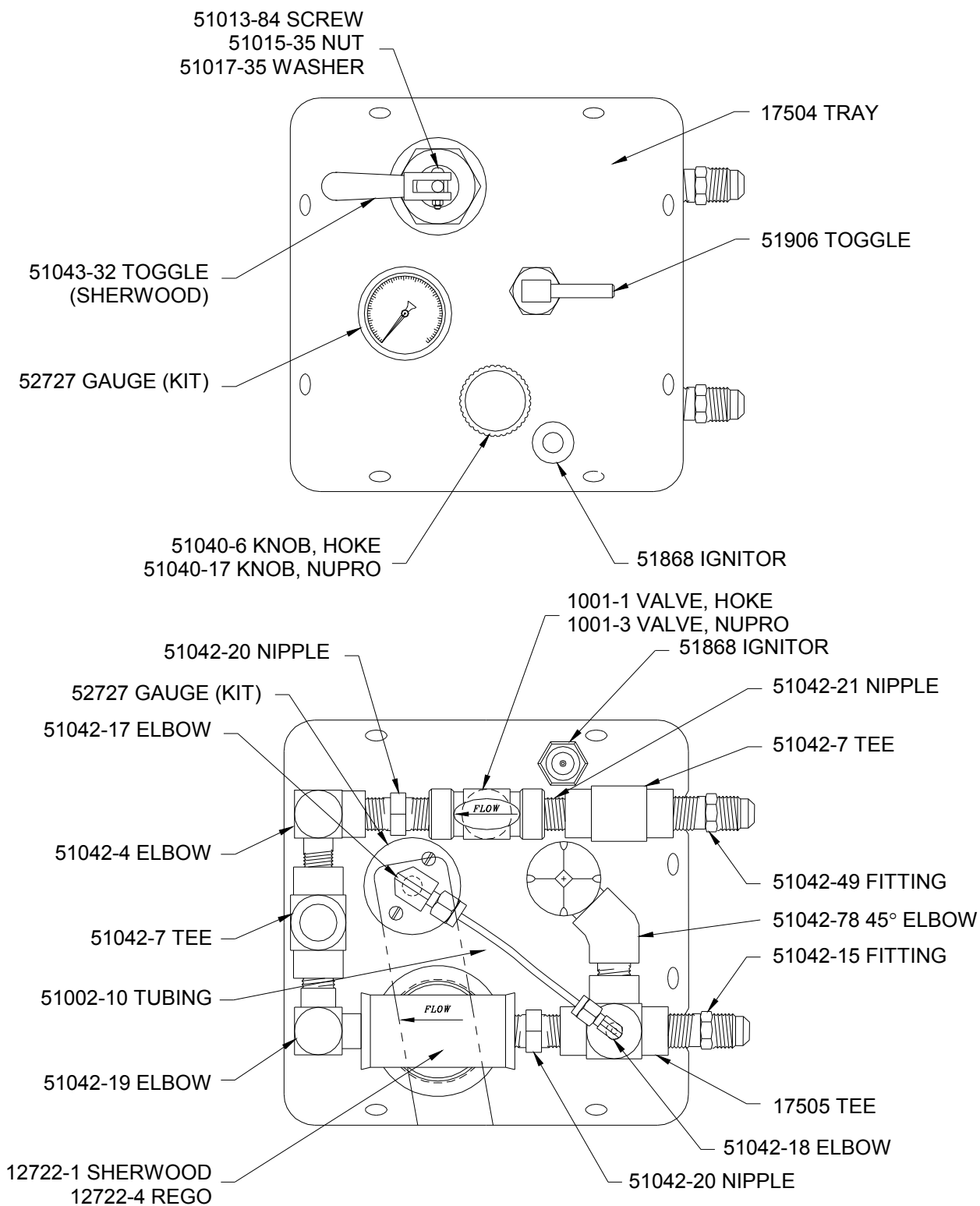
PILOT ASSEMBLY
HP2R
Figure 2RB4



PILOT ASSEMBLY
HP2R DUAL INLET
Figure 2RB5



HP2R
Figure 2RB6



HP2R DUAL INLET
Figure 2RB7

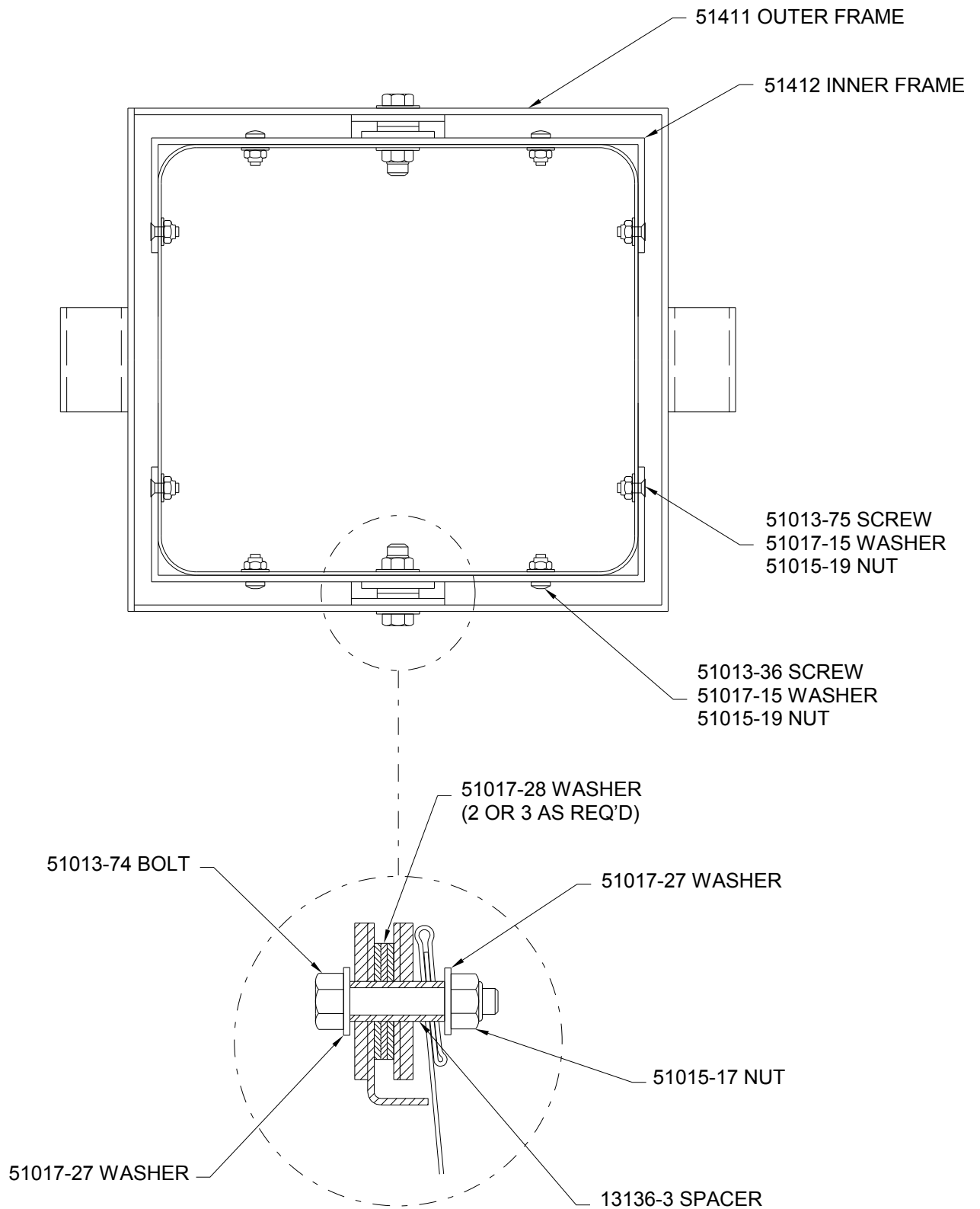


Figure 2RB8

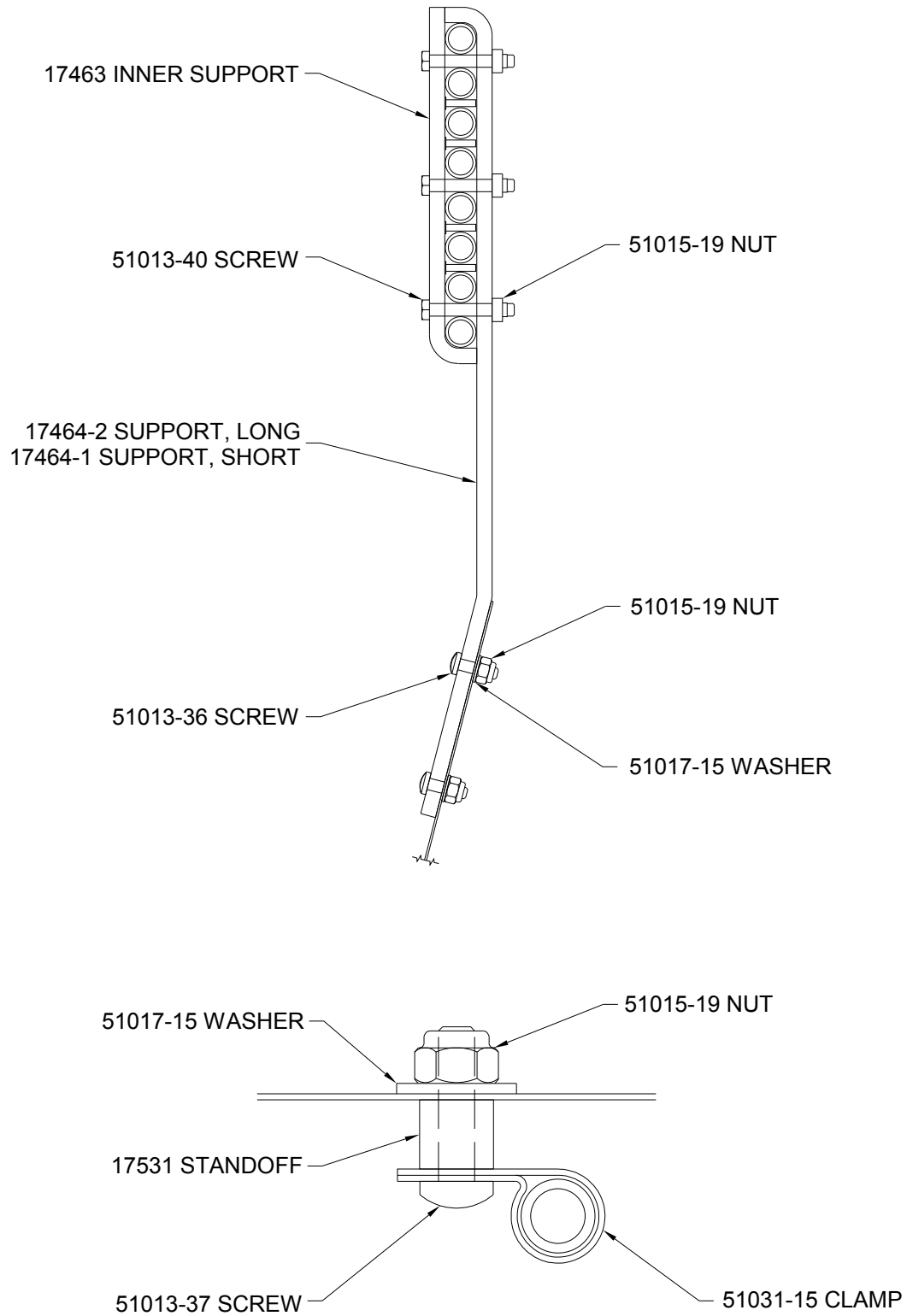


Figure 2RB9