



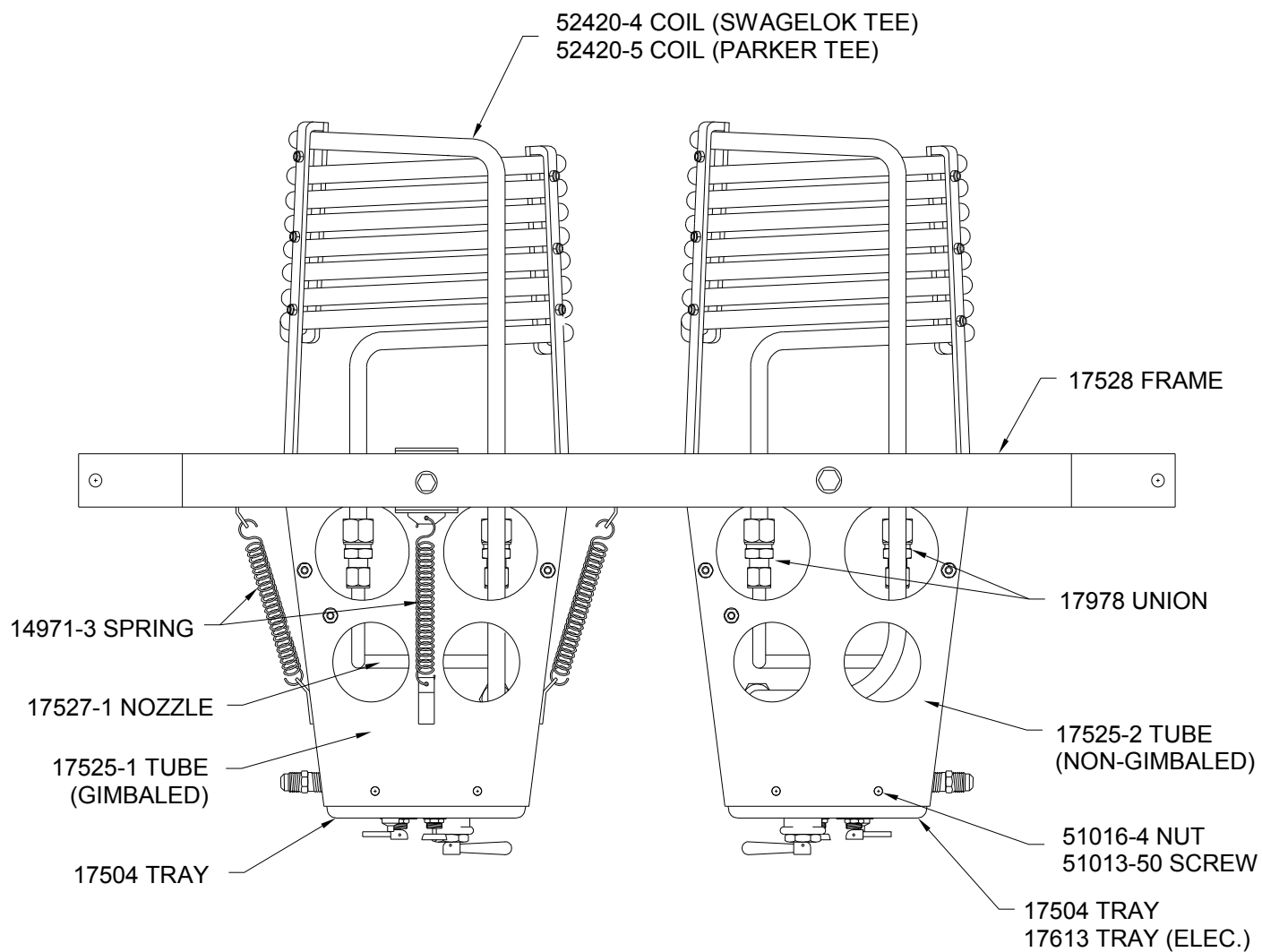
PARTS MANUAL

(Parts Subject to Availability)

DUAL BURNER
MODEL “HP2D”
P/N 17395

PART NUMBER		DESCRIPTION	UNITS
1001	- 1	VALVE, HOKE NO HANDLE	EA.
13092	- 1	GIMBAL RESTRAINT	OBSOLETE
13095	- 2	BRACKET, SPRING BURNER FRAME	OBSOLETE
13095	- 3	BRACKET, SPRING	OBSOLETE
13136	- 2	SPACER, GIMBAL	OBSOLETE
14971	- 3	SPRING, EXTENSION LEE LE-069F-6S	EA.
16557		PILOT ORIFICE DRILLED	EA.
17463		COIL SUPPORT INNER, REV. C	EA.
17464	- 1	COIL SUPPORT OUTER-SHORT	EA.
17464	- 2	COIL SUPPORT OUTER-LONG	EA.
17504		TRAY BURNER	OBSOLETE
17505		FITTING, MODIFIED TEE	EA.
17506		WASHER, RUBBER BLAST VALVE	EA.
17519		WASHER, BACKUP BLAST VALVE	EA.
17525	- 1	SQUARE TUBE, HP11 GIMBALLED	OBSOLETE
17525	- 2	SQUARE TUBE, HP11 NON-GIMBALLED	OBSOLETE
17526		GIMBAL FRAME	OBSOLETE
17527	- 1	NOZZLE COIL W/ASPIRATOR	EA.
17528		BURNER FRAME, HP11 DUAL	OBSOLETE
17529		BRACKET, VALVE HOLD DOWN	OBSOLETE
17531		CLAMP, STANDOFF COIL	EA.
17532		GIMBAL LIMITER	OBSOLETE
17613		TRAY, BURNER, HP11 W/ELECTRIC BLAST	OBSOLETE
17978		UNION RESTRICTED	EA.
51002	- 10	COPPER TUBE .125OD X .030 WALL	FT.
51012	- 5	POP RIVET AD42BS	EA.
51013	- 36	SCREW, MACHINE 10-32 X 5/8	EA.
51013	- 37	SCREW, MACHINE 10-32 X 3/4	EA.
51013	- 40	SCREW, 10-32 X 1 1/2 HEX HEAD SS	EA.
51013	- 45	BOLT, AIRCRAFT AN4-12A	EA.
51013	- 49	BOLT, AIRCRAFT AN4-6A	EA.
51013	- 50	SCREW, PAN HEAD 10-24 X 3/8	EA.
51013	- 51	BOLT, AIRCRAFT AN4-11A	EA.
51013	- 84	SCREW, PAN HD 2-56 X 1IN	EA.
51015	- 17	NUT, MS20365-428C 1/4-28	EA.
51015	- 18	MS20365-624C NUT 3/8-24	OBSOLETE
51015	- 19	NUT, MS20500-1032 HI TEMP	EA.
51015	- 35	NUT, LOCKING 2-56	OBSOLETE
51016	- 4	NUT, SPEED ARDEN C8044-1024-3B	EA.
51016	- 13	NUT, S.S. JAM NUT	OBSOLETE
51017	- 1	WASHER, 1/4 PLN AN960-C416	EA.
51017	- 12	WASHER, 5/8 AN960C1016L	EA.
51017	- 13	WASHER, 3/8	EA.
51017	- 15	WASHER, SS MS15795-841	EA.
51017	- 30	SPACER, TEFLON 161 X. 250 X .050	EA.
51017	- 34	WASHER, 1.125OD X .450 ID X .048 THK	EA.
51017	- 35	WASHER, #2	OBSOLETE
51027	- 16	FIBERGLASS SLEEVE PIEZO	FT.
51031	- 15	CLAMP, LOOP TA715SS06	EA.
51031	- 16	CLAMP, LOOP TA715SS05	EA.
51031	- 17	CLAMP, LOOP TA 828-S11	OBSOLETE
51034	- 6	O-RING, PARKER 2-007-N103-7	EA.
51034	- 9	SNAP RING	OBSOLETE
51040	- 6	HAND WHEEL & INSERT 800-35-1	EA.
51040	- 7	PLUG, BUTTON	EA.
51040	- 17	KNOB, RED METER PHEN-4J-P5	EA.

PART NUMBER		DESCRIPTION	UNITS
51040	- 18	KNOB, GREEN PILOT PHEN-4J-P5	EA.
51040	- 55	GASKET, COPPER	
51042	- 4	FITTING, STREET ELBOW 90 DEG.	EA.
51042	- 7	FITTING, FEMALE TEE 1/4 PIPE	EA.
51042	- 11	FITTING, ELBOW 90 DEG. SWIVEL 2047-4-4S	EA.
51042	- 12	FITTING, ADAPTER REDUCING 2083-6-4S	EA.
51042	- 13	FITTING, FEMALE TEE (SPECIAL) 8-86	OBSOLETE
51042	- 14	BULKHEAD	OBSOLETE
51042	- 15	FITTING, ADAPTER PIPE/JIC 2021-4-6S	EA.
51042	- 16	REDUCER	OBSOLETE
51042	- 17	FITTING, FEMALE ELBOW 2-25BZ-B	EA.
51042	- 18	FITTING, MALE ELBOW 2-2CBZ-B	EA.
51042	- 19	PLUMBING, MALE PIPE ELBOW	OBSOLETE
51042	- 20	FITTING, HEX NIPPLE 2083-4-4S	EA.
51042	- 21	FITTING, CLOSE NIPPLE 2084-4S-7/8	EA.
51042	- 22	PLUMBING, SWIVEL PIPE TEE	OBSOLETE
51042	- 39	FITTING, ADAPTER PIP/JIC 2022-4-4S	EA.
51043	- 6	FILTER, METEX 52-0110-F071-04	EA.
51043	- 9	VALVE, ELECTRIC BLAST SOLENOID	OBSOLETE
51043	- 26	REGULATOR PISTON	EA.
51043	- 32	VALVE, TOGGLE HANDLE ONLY SHERWOOD	OBSOLETE
51865	- 2	VALVE, NUPRO B-4JNAR2 GREEN	EA.
51901		PILOT HEAD ASSEMBLY	EA.
51902		FITTING, MODIFIED CROSS 2080-4-4S	EA.
51906		VALVE, PILOT TOGGLE HANDLE	OBSOLETE
51909		SLUG, PILOT	EA.
51911	- 1	WASHER, SLOTTED	OBSOLETE
51911	- 2	WASHER, SLOTTED .048 THK.	EA.
51902		4 POINT TEE W/GAUGE ATTACHMENT	EA.
51912		VALVE ASSEMBLY, MODIFIED	OBSOLETE
52357		O-RING, BLAST VALVE	EA.
52380		VALVE, MODIFIED HOKE	EA.
52420	- 4	HP11 COIL ASSY W/NUTS & FERS SW F	EA.
52420	- 5	HP11 COIL ASSY W/NUTS & FERS PARKER	EA.
52727		PRESSURE GAUGE KIT (REPLACEMENT WIKA)	EA.



BURNER ASSEMBLY,
HP11 DUAL

HP11 DUAL UPDATE
Figure 2DB1

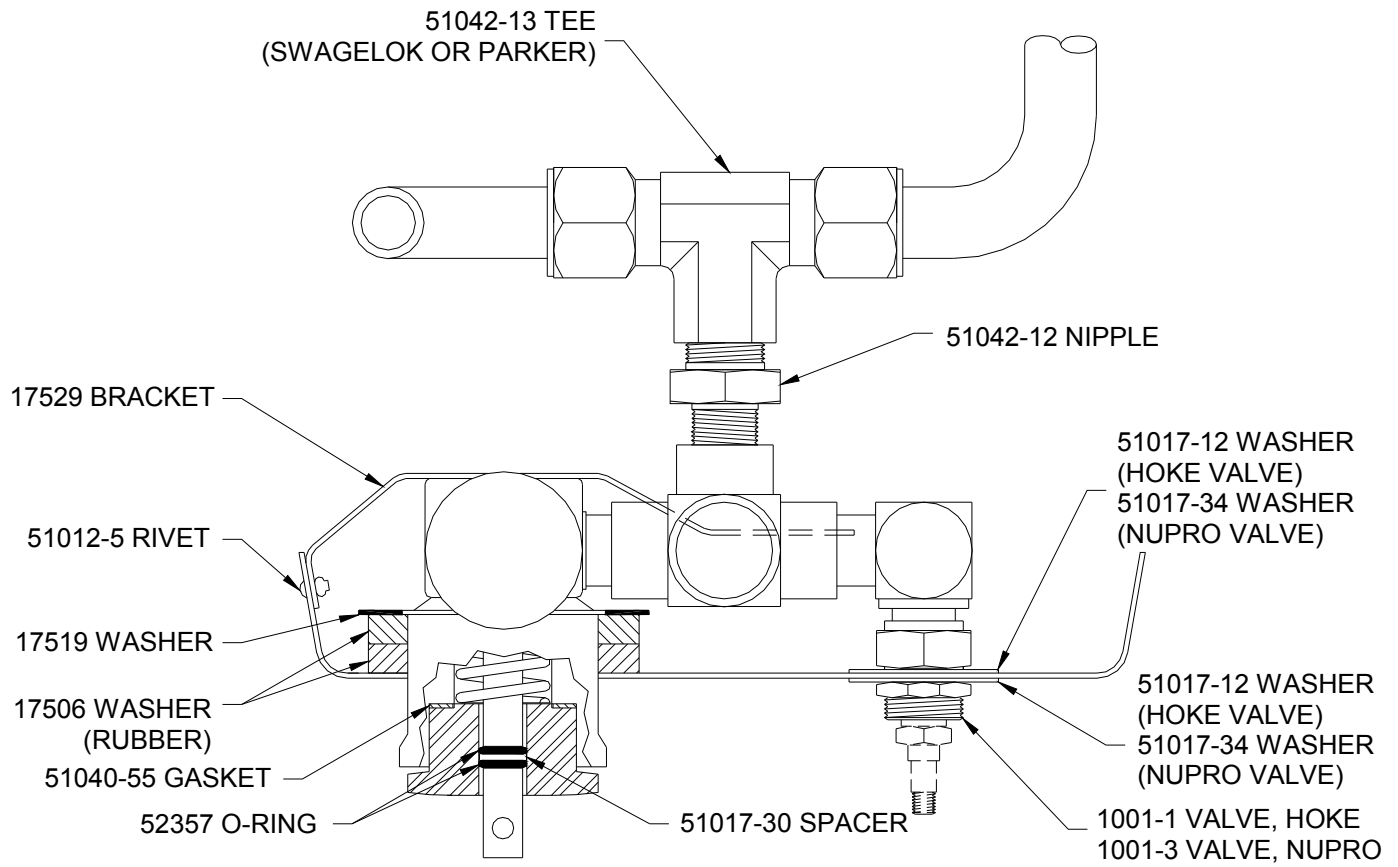
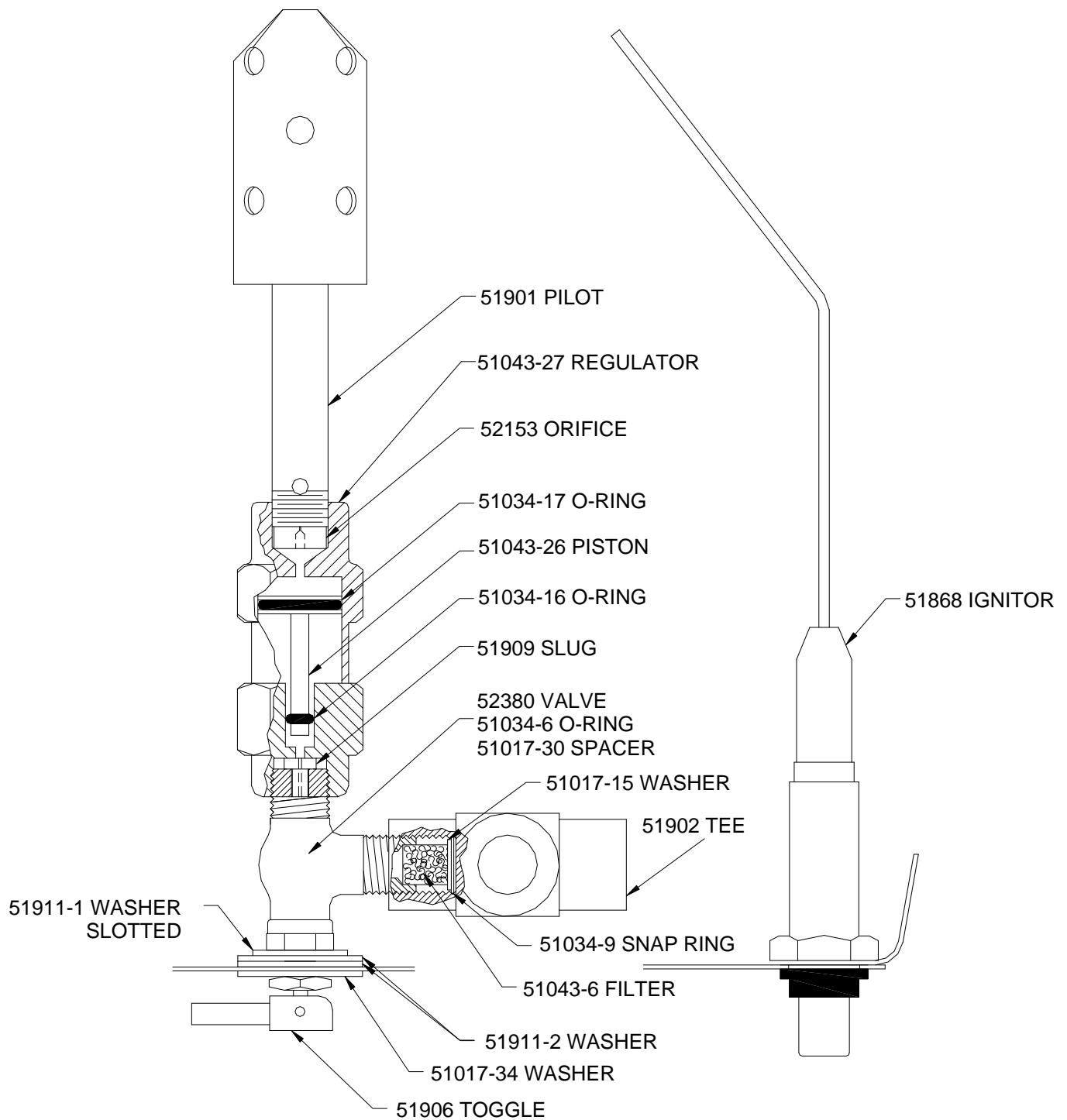
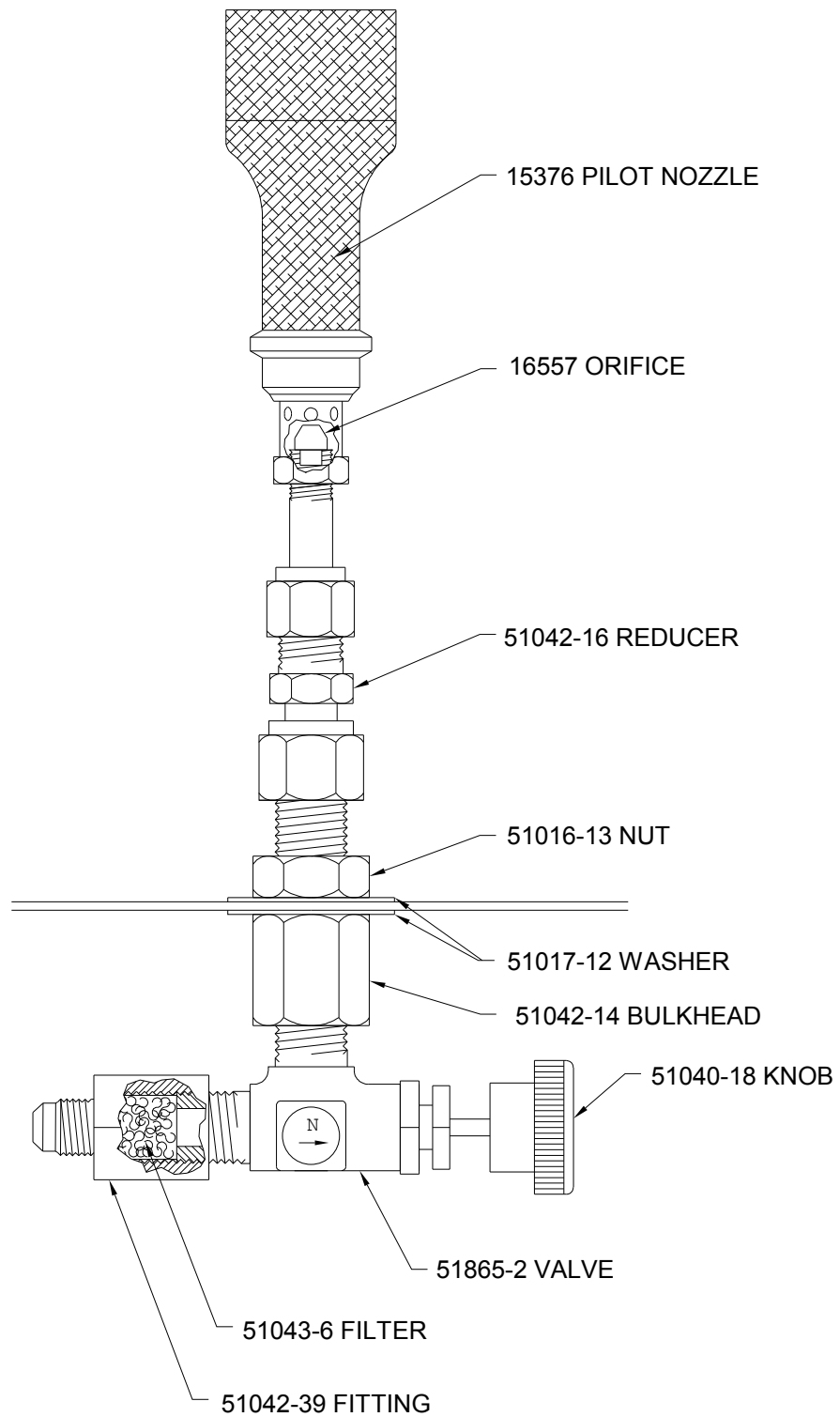


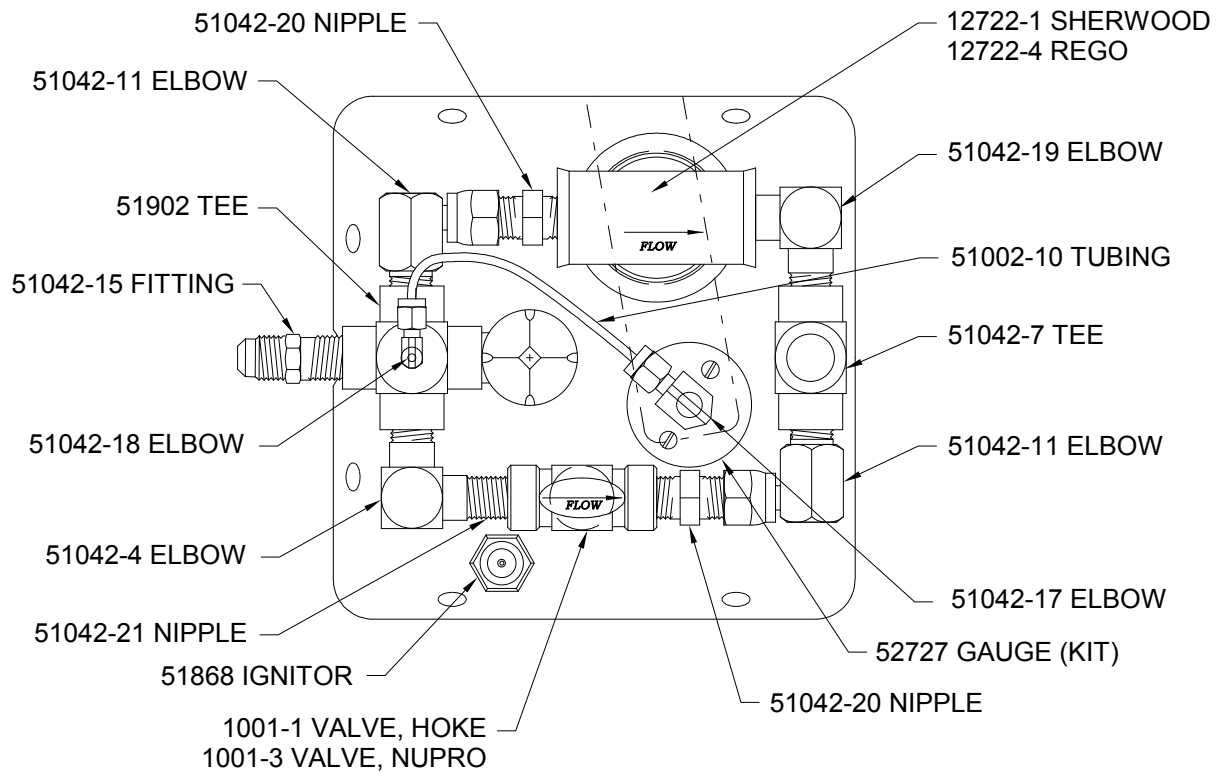
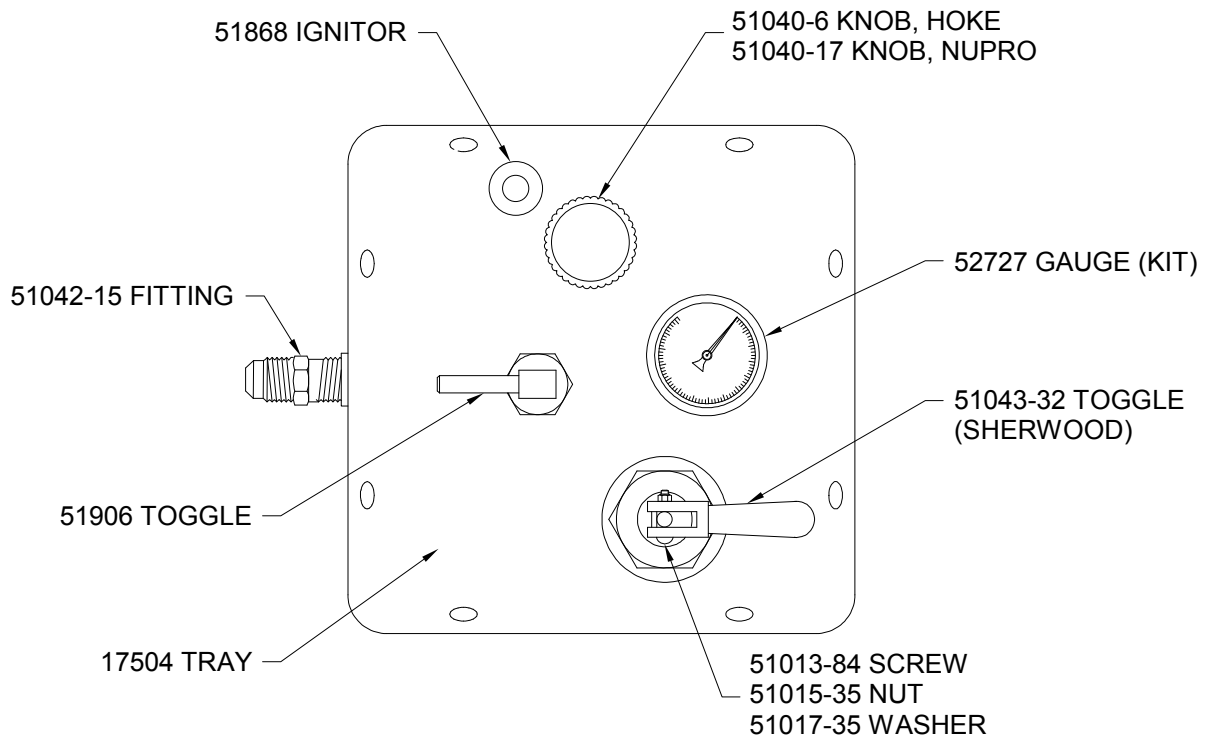
Figure 2DB2



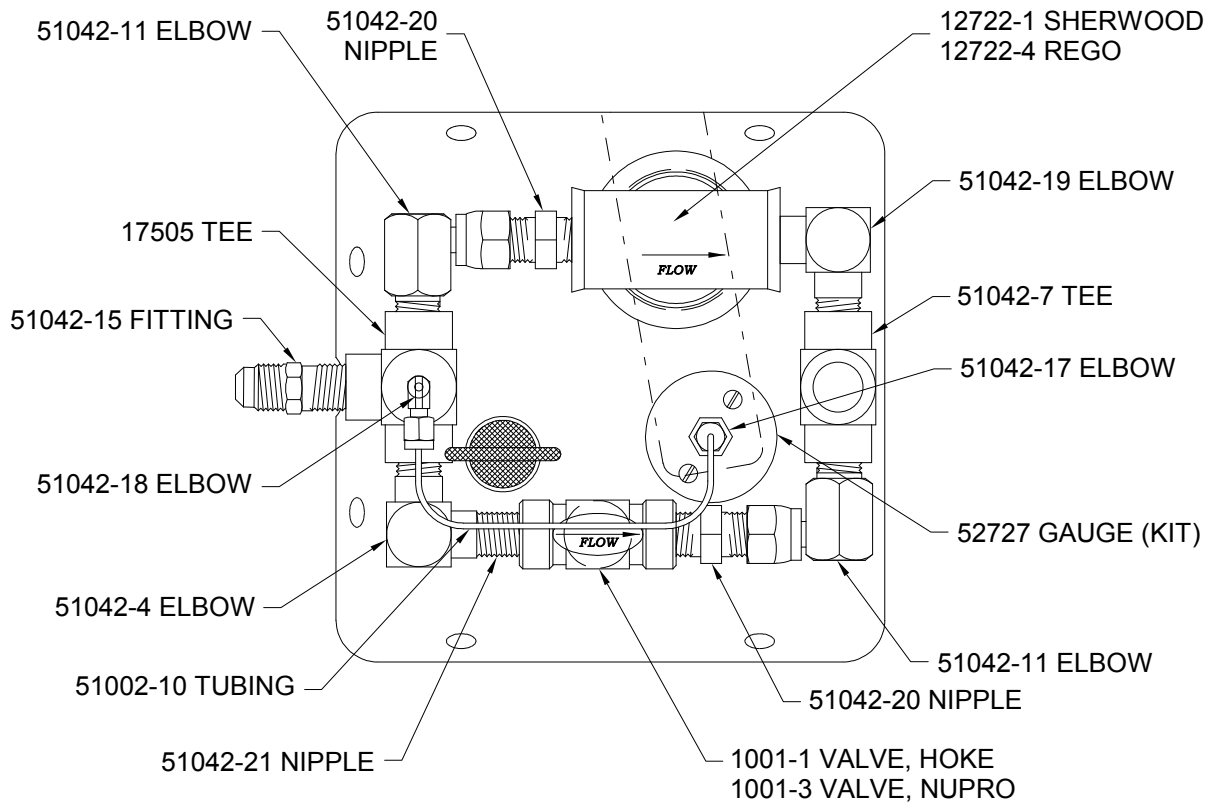
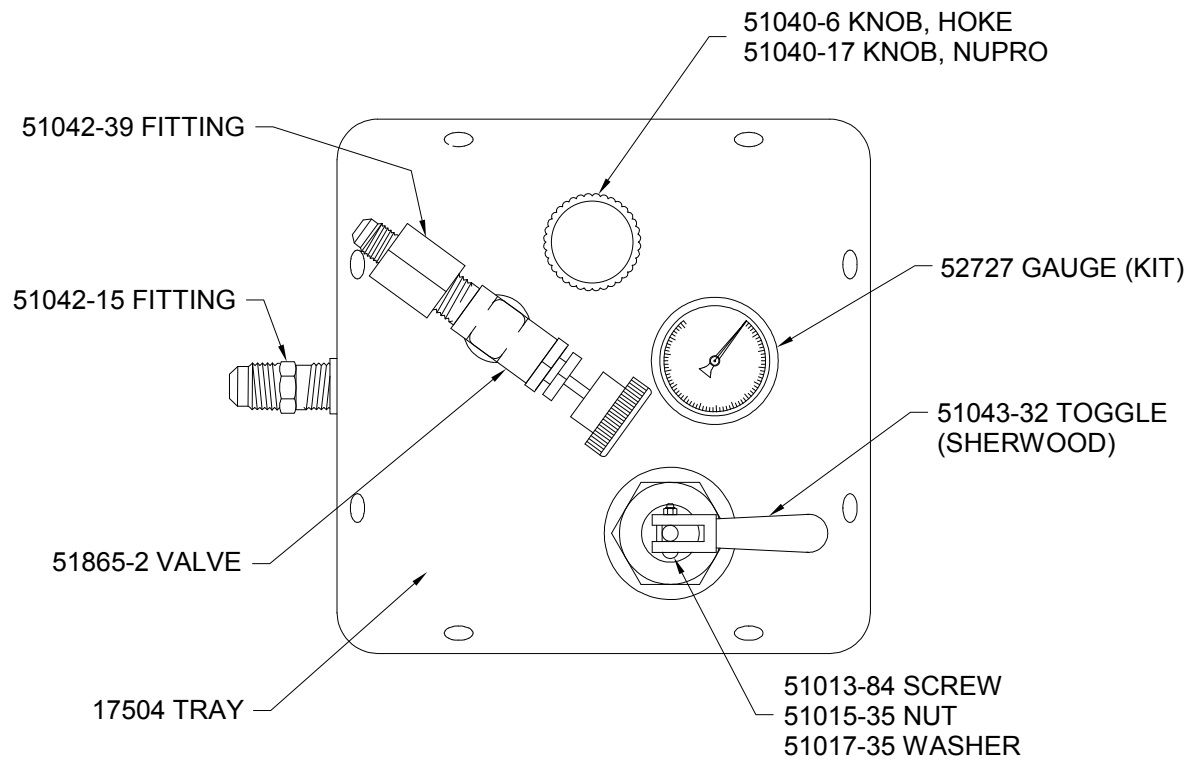
PILOT, HPIID UPDATE
Figure 2DB3



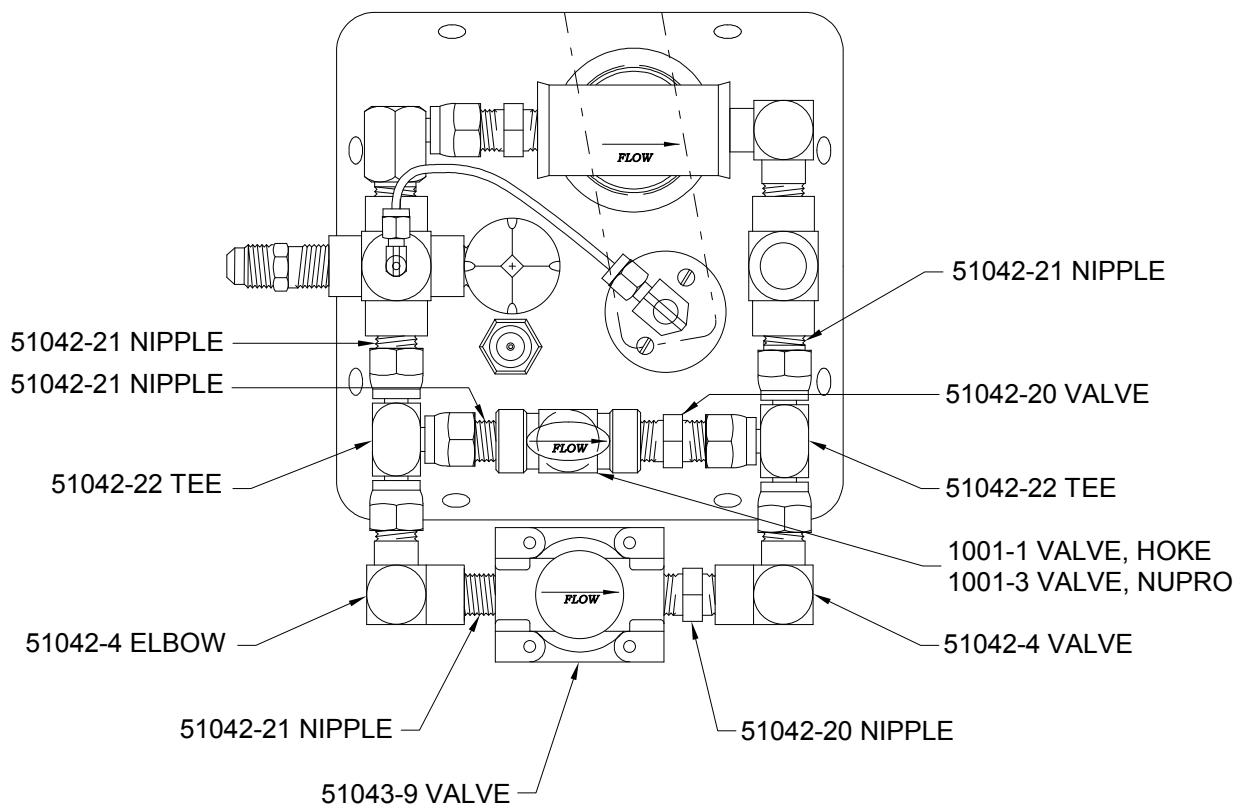
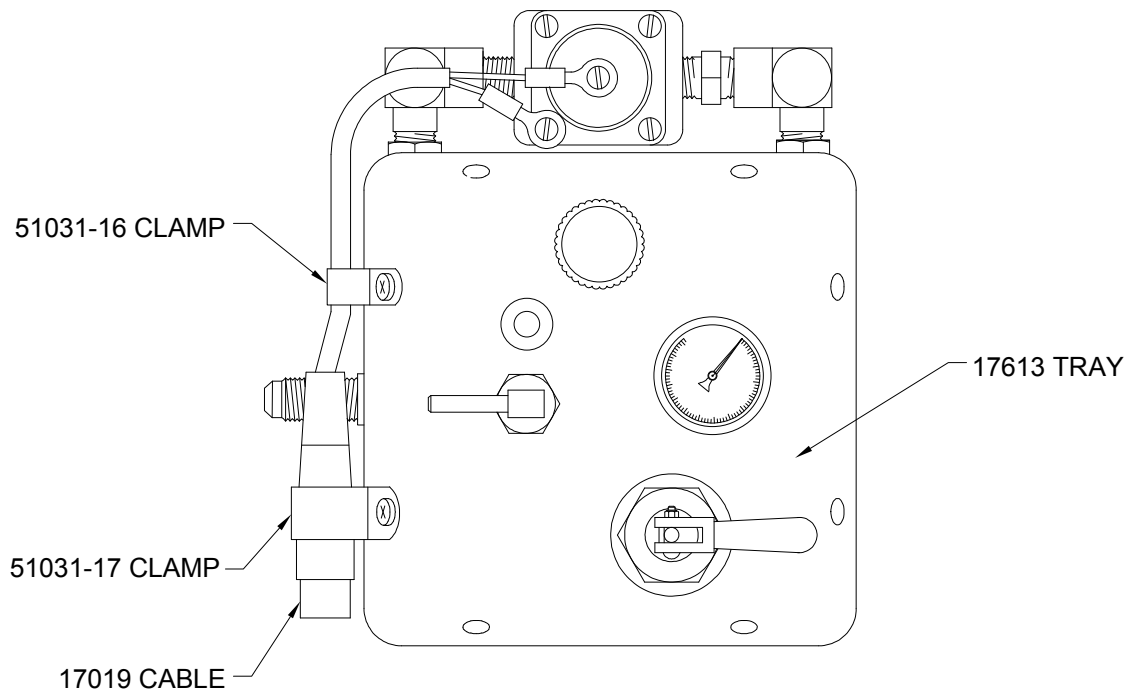
PILOT, HPIID
Figure 2DB4



HPIID UPDATE
Figure 2DB5



HPIID
Figure 2DB6



HPIID ELECTRIC BLAST
Figure 2DB7

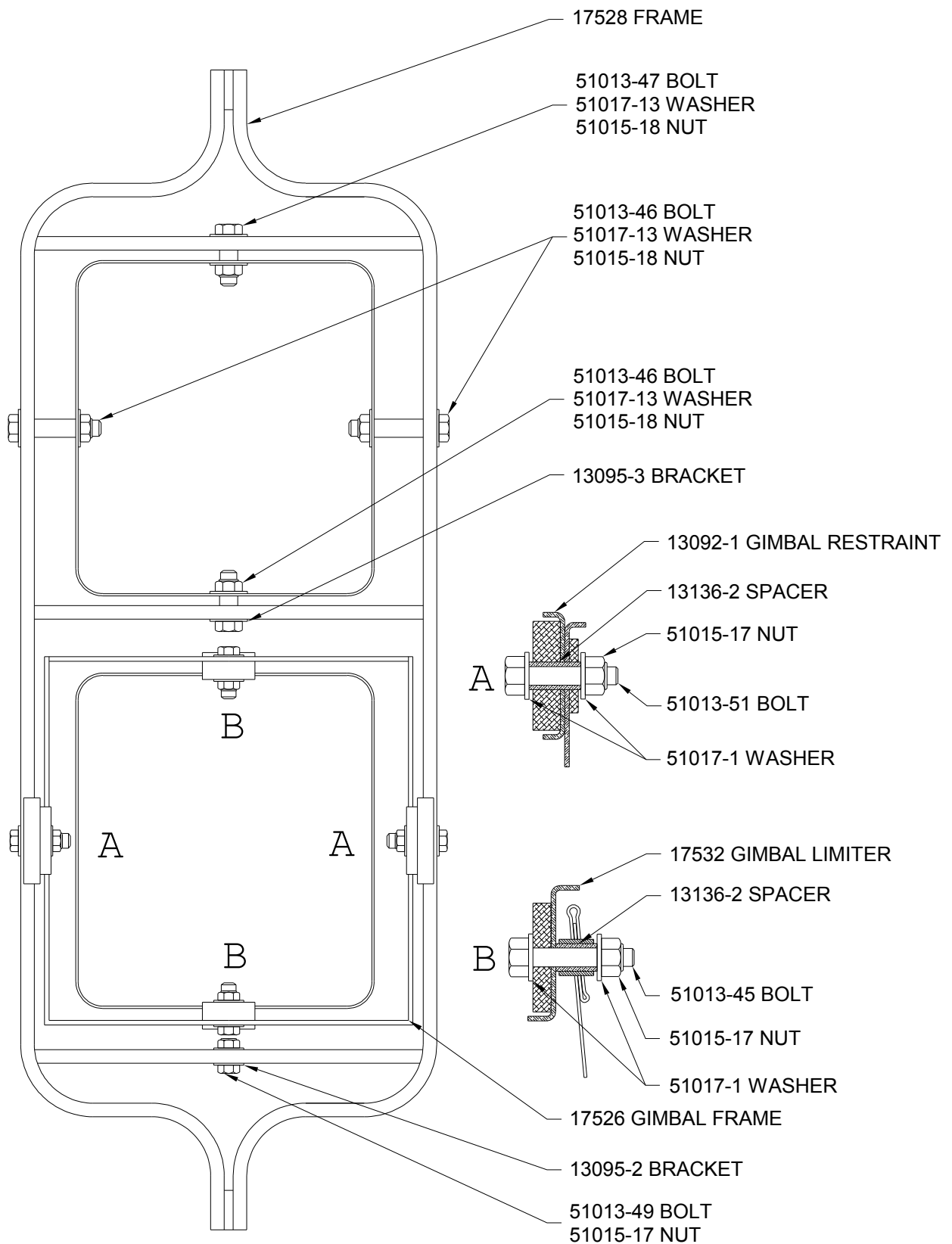


Figure 2DB8

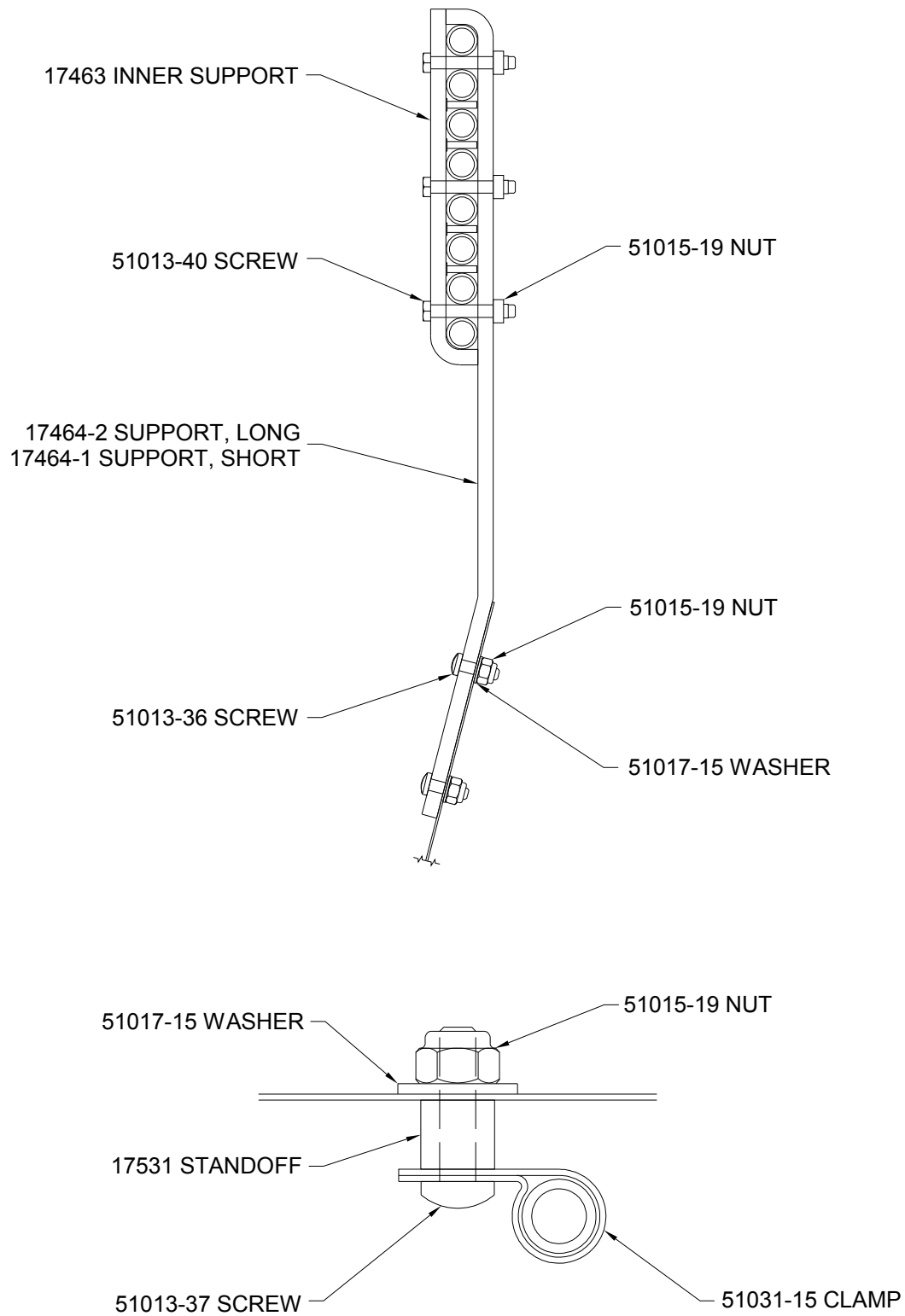


Figure 2DB9