

The PharmChek® Drugs of Abuse Sweat Patch by PharmChem allows continual monitoring of your drug-dependent clients. Due to the solid construction of the patch, tampering is visibly evident.

Features

- Tamper evident
- Increased window of detection
- Acts as a deterrent to drug use
- Variable removal date
- Cost effective
- Reliable
- Hygienic alternative to urine testing
- 7 - 10 days of wear time
- Tests for both the drug metabolite and parent drug
- Cannot be diluted
- Retains drugs used any time during wear period
- Continuous monitoring; 24 hours a day, 7 days a week



EXPANDED OPIATE PANEL: Hydrocodone, Hydromorphone, Oxycodone, Oxymorphone, Buprenorphine, Benzodiazepines, Methadone, and Fentanyl

STANDARD PANEL: Cocaine, Opiates, Amphetamine, Marijuana, Methamphetamine, PCP, Hydrocodone, and Hydromorphone

ADD-ON PANEL: Fentanyl



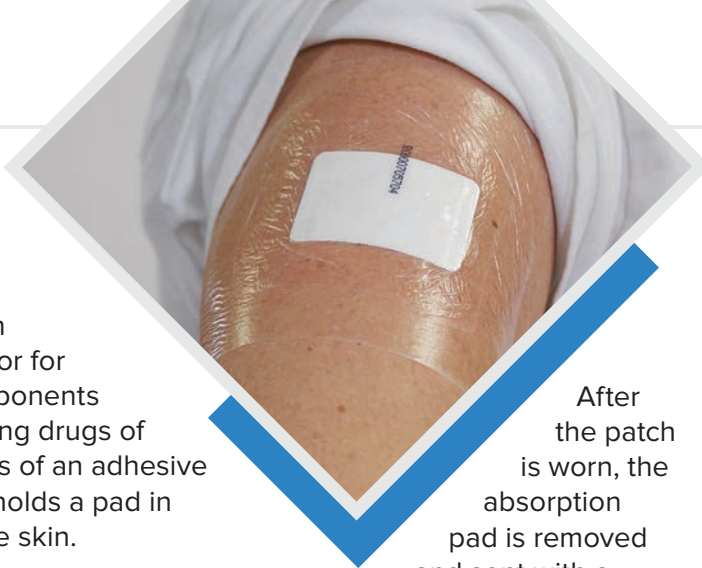
Available Kits

-  **N218:** 50-patch kit
-  **N214:** 10-patch kit

The Patch

The Sweat Patch acts as a collector for nonvolatile components of sweat, including drugs of abuse. It consists of an adhesive plastic film that holds a pad in place against the skin.

The adhesive film of the patch is a semipermeable barrier that allows oxygen, carbon dioxide, and water vapor to pass through so that the skin can breathe normally. Larger molecules (such as drugs) are trapped in the absorption pad portion of the patch. Contaminants from the environment cannot penetrate the adhesive barrier from the outside, so the patch can be worn during normal activities, including bathing, swimming and athletics.



After the patch is worn, the absorption pad is removed and sent with a completed chain-of-custody form to our partner lab to be tested for drugs of abuse. Clinical studies have shown that drugs and drug metabolites contained in the pad are stable for days at room temperature, and months in a freezer. The Sweat Patch is tamper-evident when applied correctly. A unique number is imprinted on each patch to aid with chain-of-custody identification. The Sweat Patch is also gender-neutral and eliminates the need for same sex observations.

Usage

The Sweat Patch is worn on the upper arm, (lower midriff and lower back are alternative sites). The skin where the patch will be worn is thoroughly and aggressively cleaned with alcohol pads to remove dirt, oil and dead skin cells prior to application. The Sweat Patch should be worn for a minimum of 24 hours to ensure an adequate amount of sweat is collected for testing.

Analysis

Once the pad is received at the lab, any drugs present are washed from it into an extraction solvent and tested by assays similar to those used for testing urine samples.

Immunoassay technology is currently used for the screening test. A positive screening test is confirmed by LC-MS/MS (Tandem Liquid Chromatography/ Mass Spectrometry).

Want to learn more? Scan this code to visit pharmchek.com.



Expanded Drug Panel	LC-MS/MS Confirmation Cutoffs
Methamphetamine AMP/Metab	10 ng/mL Positive 2.0-9.9 ng/mL Present
Amphetamine	10 ng/mL
Cocaine COC	10 ng/mL Positive 2.0-9.9 ng/mL Present
COC/Metab	10 ng/mL
Benzodiazepines	1 ng/mL
Buprenorphine, Norbuprenorphine	0.5 ng/mL
Fentanyl, Nor fentanyl	1 ng/mL
Methadone	5 ng/mL
Codeine	10 ng/mL
Morphine	10 ng/mL
6-AM	10 ng/mL
Hydrocodone, Hydromorphone	10 ng/mL
Oxycodone, Oxymorphone	10 ng/mL
PCP	7.5 ng/mL
THC (Delta-9)	0.5 ng/mL
Standard Drug Panel	LC-MS/MS Confirmation Cutoffs
Methamphetamine AMP/Metab	10 ng/mL Positive 2.0-9.9 ng/mL Present
Amphetamine	10 ng/mL
Cocaine COC/Metab	10 ng/mL Positive 2.0-9.9 ng/mL Present
COC/Metab	10 ng/mL
Codeine	10 ng/mL
Morphine	10 ng/mL
6-AM	10 ng/mL
Hydrocodone, Hydromorphone	10 ng/mL
PCP	7.5 ng/mL
THC (Delta-9)	0.5 ng/mL
Fentanyl Add-On	LC-MS/MS Confirmation Cutoffs
Fentanyl, Nor Fentanyl	1 ng/mL