

Product Features:

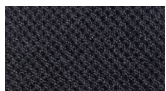
- Flip-up seat allows for space-saving, easier storage
- Ergonomic molded foam seat with a waterfall edge that reduces leg stress
- High-strength mesh back with dynamic flex back motion that adapts to movement for enhanced comfort
- Durable, powder-coated steel frame
- Equipped with casters for effortless movement across various surfaces
- Ships with both casters & floor glides
- Set of 2
- ANSI/BIFMA
- CAL-117; PROP65
- Fully assembled
- Limited Lifetime Warranty

Material Attributes:

Frame	• Steel
Base / Legs	• Steel
Arms / Pads	• Nylon
Casters	• Nylon
Glides	• Nylon
Seat Cushion	• Molded Foam
Cushion Thickness	• 3.15"
Cushion Width	• 18½"W
Cushion Depth	• 18½"D
Foam Density	• 3.75 lbs.
Seat Cover	• Fabric
Back Cover	• Mesh

Product Dimensions:

Overall	25"W x 21¾"D x 36"H
Seat	18½"W x 18½"D x 18½"H
Seat to Back	17½"H
Back Height	17½"H
Back Depth	17¾"D
Back Width	18¼"W
Arm Height	6¼"H
Arm Width	2½"W
Arm Depth	8¼"D
Floor to Arm	26¾"H
Seat To Floor	18½"H
Product Weight	43.60 lbs.
Weight Capacity	275 lbs.



BK Black
Fabric

Shipping Dimensions:

Carton Length	40.16"
Carton Width	14.96"
Carton Height	26.77"