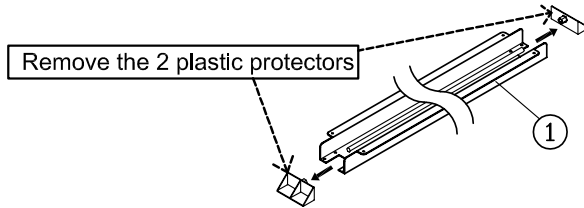




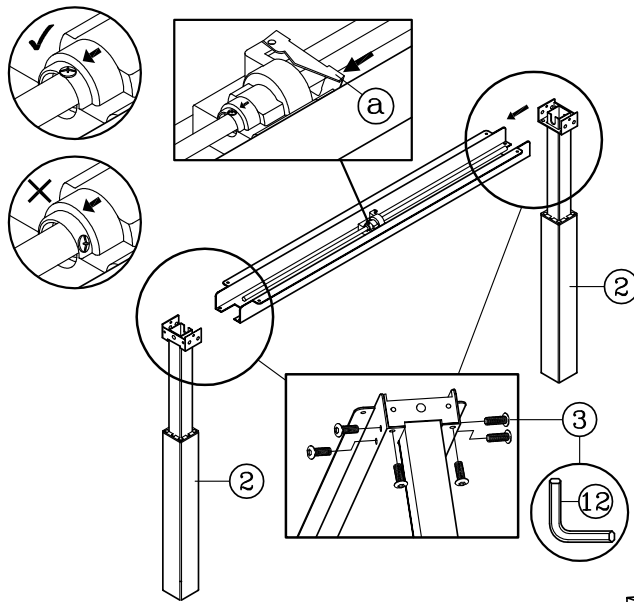
PARTS LIST

| KEY QTY DESCRIPTION | KEY QTY DESCRIPTION |
|---------------------|-----------------------------|
| 1 1 Channel | 8 4 Lever Screw |
| 2 2 Leg | 9 2 Feet |
| 3 16 Leg Screw | 10 8 Feet Screw |
| 4 2 Side Frame | 11 4 Caster |
| 5 1 Top | 12 1 Allen Wrench |
| 6 14 Top Screw | 13 1 14mm Size Allen Wrench |
| 7 1 Lever | |

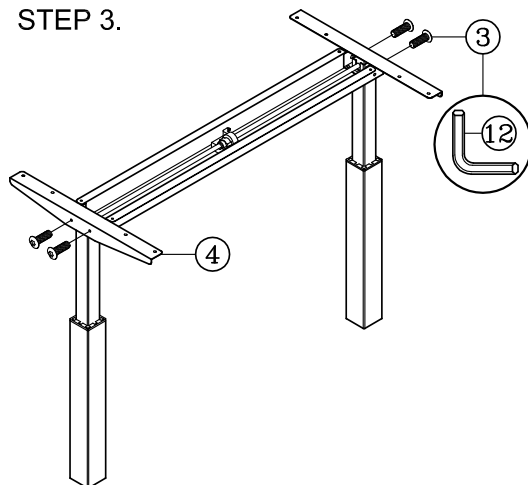
STEP 1.



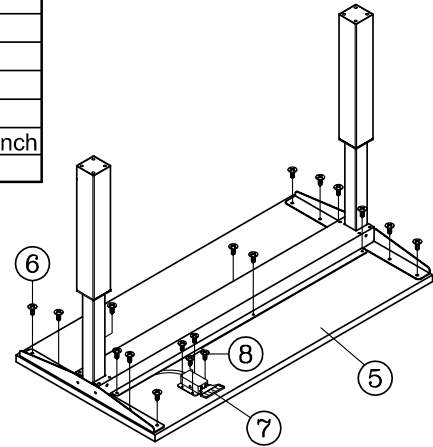
STEP 2. To make sure the screw align the arrow on mechanism then installing the leg into channel. If not, press the controller @ then turn the tube to have screw on the correct position.



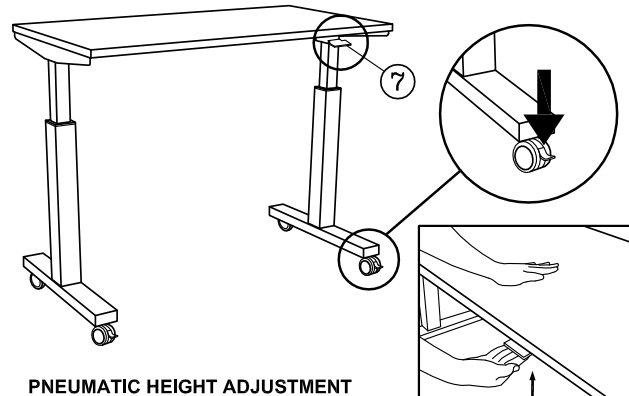
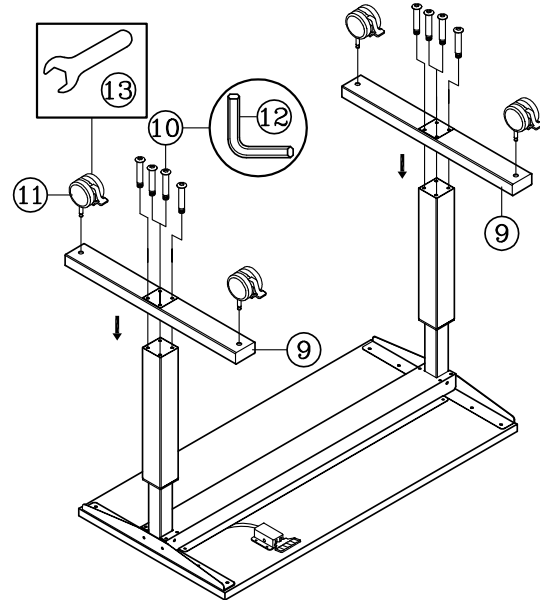
STEP 3.



STEP 4.



STEP 5.



PNEUMATIC HEIGHT ADJUSTMENT

1. Lock all casters.
2. When raising/lowering table, use one hand to support the center of top and the other hand to lift handle.
3. To raise table height, lift handle (7), table will move up gradually, release handle (7) when desired height is reached. To lower table, with one hand push the center of table tip downward and lift handle (7) with other hand, release handle (7) when desired height is reached.