

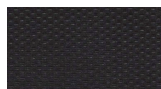


Product Features:

- Pneumatic seat height adjustment
- Complete 360 Degree swivel
- Great utility, comfort, & aesthetics with an ergonomic design that will keep you comfortable all day long
- Heavy-duty, titanium steel base for increased stability
- Wide & comfortable seat in many different upholstery options
- Optional height and width adjustable arms are available separately
- Ready-to-assemble
- Environmentally friendly & non-toxic
- GreenGuard Certified
- Limited Lifetime Warranty
- Can be shipped by small package carrier

Material Attributes:

Frame	• Titanium Steel
Base / Legs	• Titanium Steel
Arms / Pads (optional)	• Nylon
Casters	• Nylon
Footring	• Chrome
Seat Cover	• Mesh
Back Cover	• Mesh



BK Black Mesh

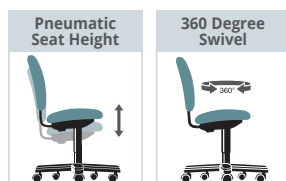
Product Dimensions:

Overall	25 1/2"W x 25 1/2"D x 42-51 1/4"H
Seat	20 1/2"W x 19 1/2"D x 24-33 1/4"H
Seat to Back Height	20 1/8"H
Back Height	20 1/8"H
Back Width	20 1/2"W
Seat to Floor	24-33 1/8"H
Product Weight	33 lbs.
Weight Capacity	275 lbs.

Shipping Dimensions:

Carton Length	23.43"
Carton Width	23.23"
Carton Height	22.05"
Carton Weight	37.40 lbs.

Ergonomic Functions:



Adjusts "up and down" seat height relative to the floor.

Allows seat "Rotation" in a full circle.

Optional Adjustable Arm Kit:



#311AK