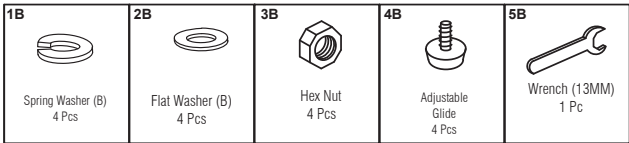
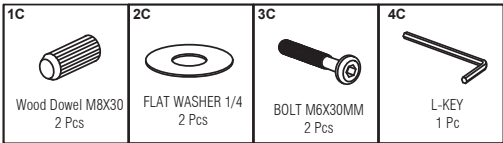


HARDWARE:



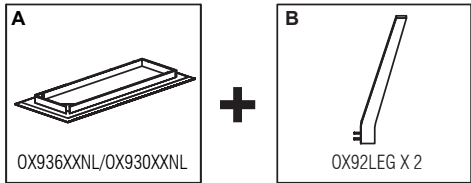
PACK WITH OX92LEGS



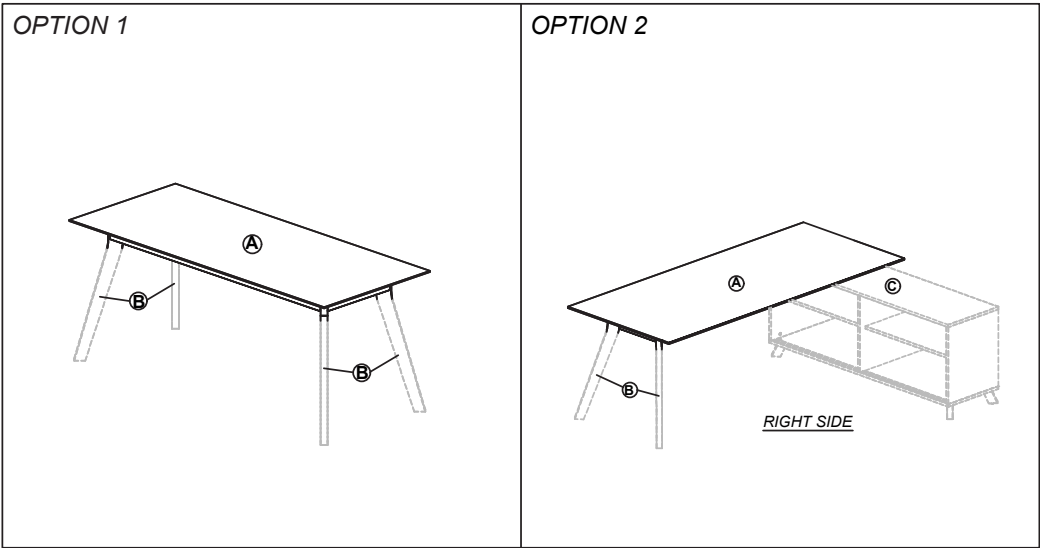
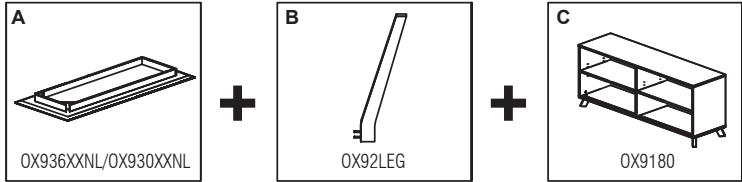
PACK WITH OX9180

COMPONENTS:

OPTION 1



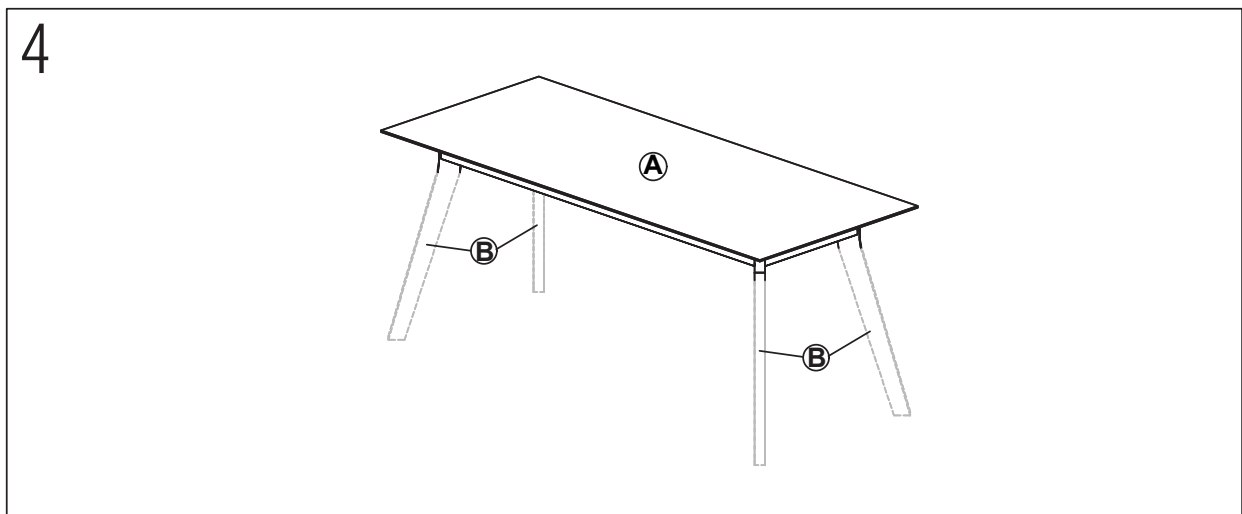
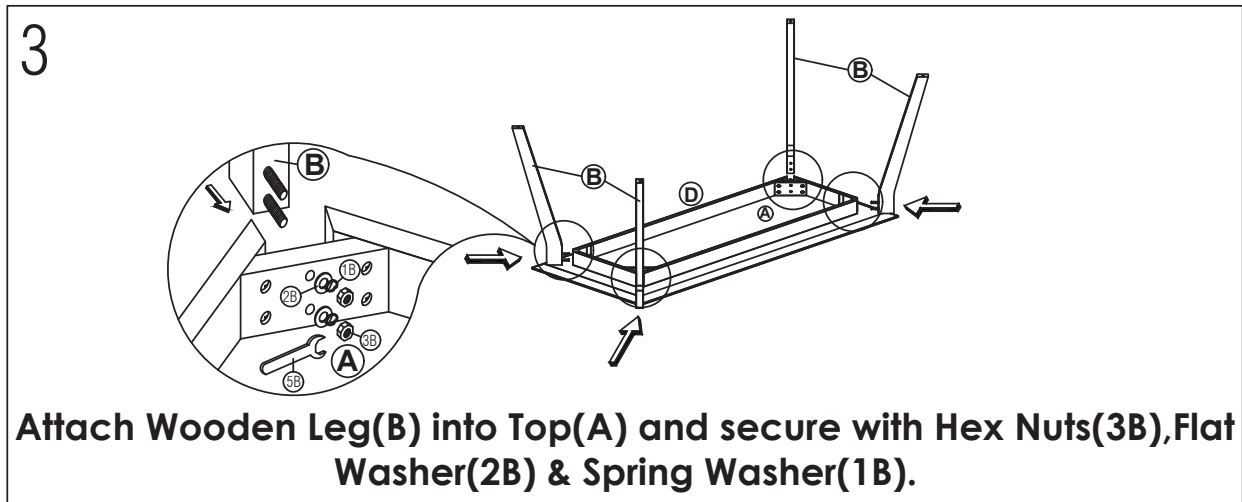
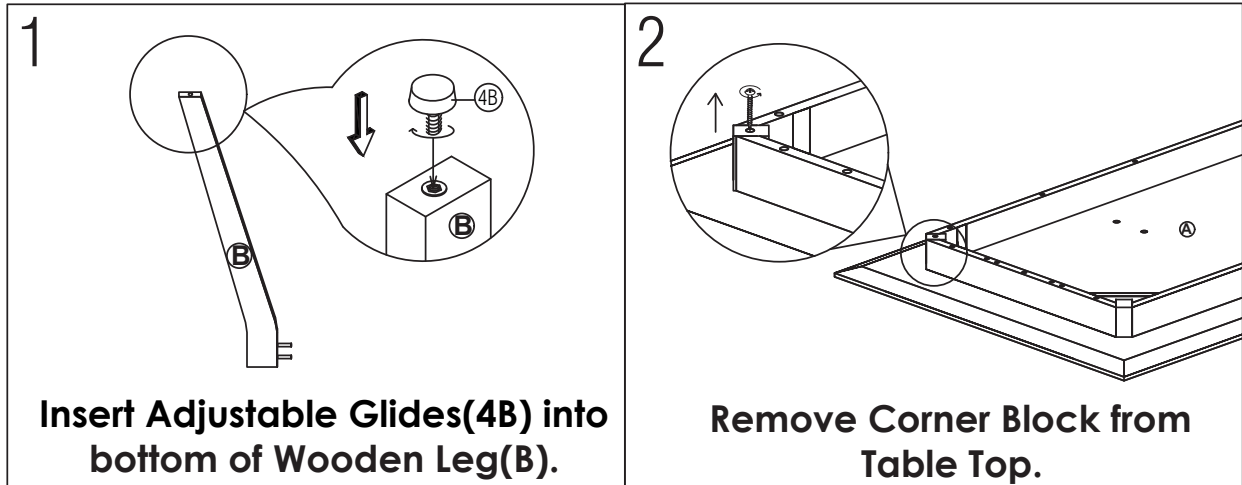
OPTION 2



IMPORTANT NOTE:

- Place all wooden parts on a clean, smooth surface to prevent the parts from being scratched.
- Check to be sure that you have all parts and hardware.
- Remove all wrapping materials, including staples & packing straps before you start to assemble.
- Do not tighten all screws/bolts until all completely assembled.
- Keep all hardware parts out of reach of children.

OPTION 1



OPTION 2

