

HARDWARE

1 Cam Lock 12 Pcs	2 Cam Cam 12 Pcs	3 Minifix cap 12 Pcs	4 Shelf Pin 4 Pcs	5 Adjustable Glide 5 Pcs	6 Bolt M6X30MM 12 Pcs	7 L-KEY 1 Pc	8 FLAT WASHER 8 Pcs	9 Screw #3.5 x 16mm 12 Pcs	10 Flat Plate 2 Pcs	11 Push Lock 1 Set	12 M3.5 x 12 CSK Screw 2 Pcs	13 Ø15mm Hole Plug 4 Pcs
-------------------------	------------------------	----------------------------	-------------------------	-----------------------------------	-----------------------------	--------------------	---------------------------	-------------------------------------	---------------------------	--------------------------	---------------------------------------	-----------------------------------

INCLUDED WITH OX9245 A

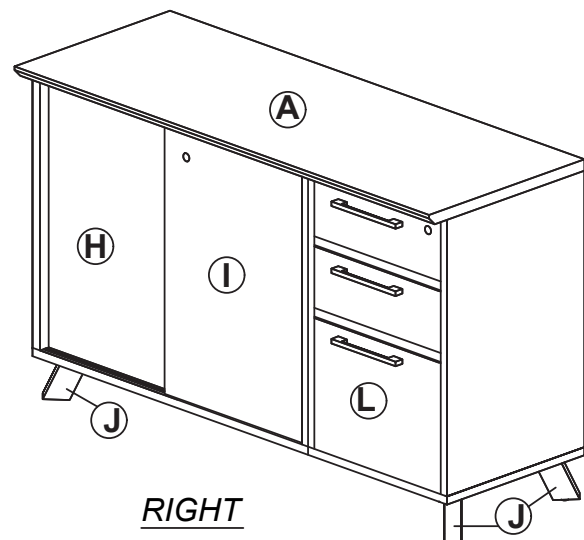
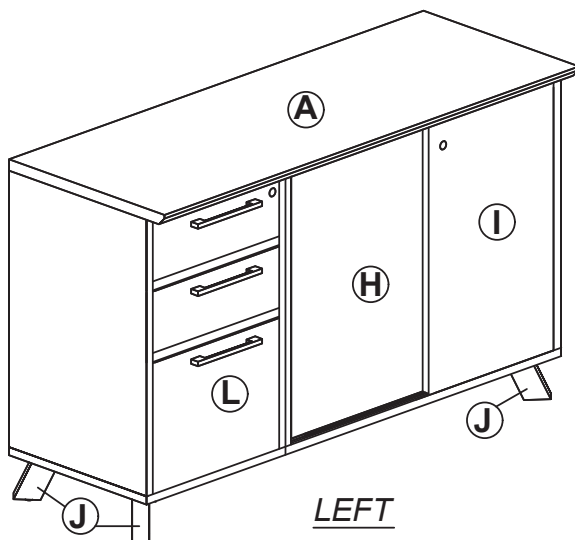
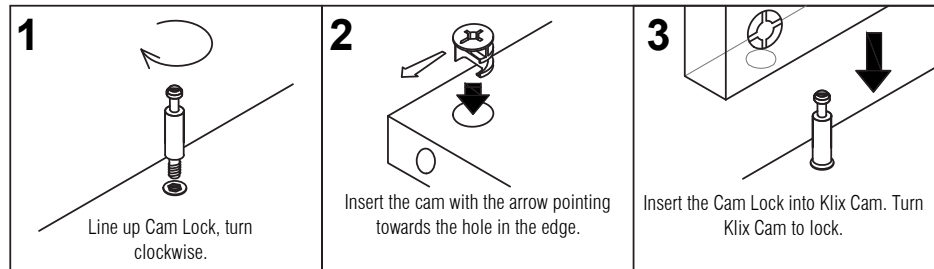
14 File Clip 2 Pcs	15 File Bar 1 Pc	16 Handle 3 Pcs
--------------------------	------------------------	-----------------------

INCLUDED WITH OX9245 B

COMPONENTS

A TOP PANEL	B SIDE PANEL-L	C SIDE PANEL-R	D BOTTOM PANEL	E BACK PANEL	F ADJUST SHELF PANEL	G FIXED SHELF PANEL	H LEFT DOOR	I RIGHT DOOR	J WOODEN LEG X 4PCS	K SUPPORT LEG	L BOX BOX FILE
----------------	-------------------	-------------------	-------------------	-----------------	-------------------------	------------------------	----------------	-----------------	------------------------	------------------	-------------------

KLIX CAM INSTRUCTIONS

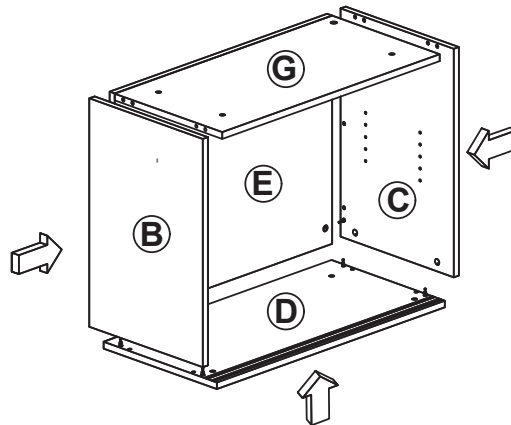


IMPORTANT NOTE :

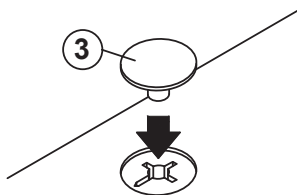
- Place all wooden parts on a clean, smooth surface to prevent the parts from being scratched.
- Check that you have all parts and hardware.
- Remove all wrapping materials, including staples & packing straps before you start to assemble.
- Do not tighten any screws or bolts until the unit is completely assembled.
- Keep all hardware parts out of reach of children.

1

Attach Side Panel-L(B) & Side Panel-R(C) to Fixed Shelf(G) & Back Panel(E) then attach Bottom Panel(D) to Side Panels(B,C) using Cam Lock(1) and Klix Cam(2).

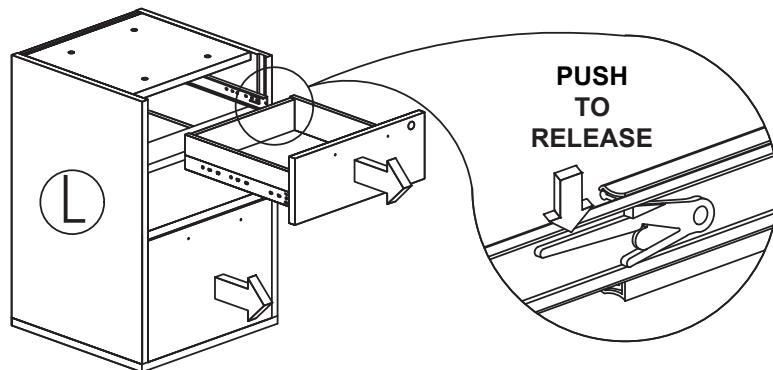


2



Attach Cam Cap (3) to all Klix Cam(2) by pushing neck through center of cam.

3



Press drawer slide release tab and remove the top drawer and bottom drawer.

4

LEFT

Attach B/B/F(L) & Fixed Shelf(G) to Top Panel(A) and secure with Bolt(6) & Flat Washer(8)

Insert Adjustable Glides(5) into bottom of Wooden Leg(J) & Support Leg(K).

Attach Wooden Leg(J) to Bottom Panel(D) using Bolt(6)

Screw Support Leg(K) to Bottom Panel(D)

Attach Flat Plate(10) using Screw(9) to Bottom Panel(D) & Bottom BBF(L)

