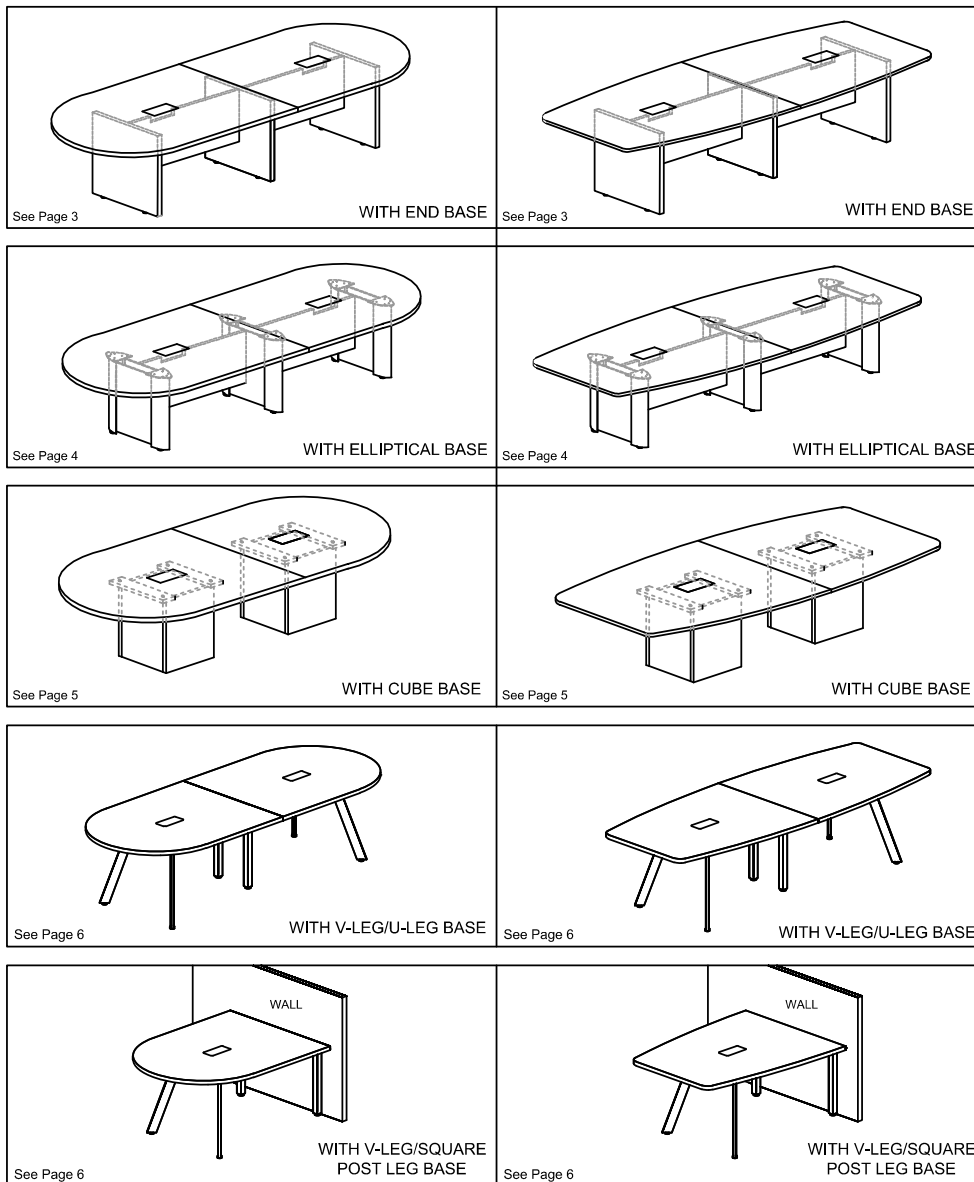
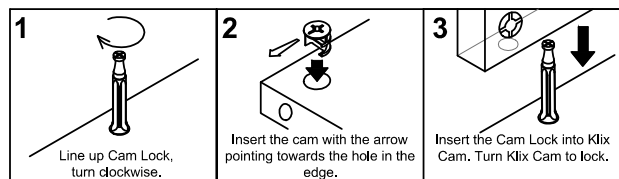


These instructions apply to all models shown below.



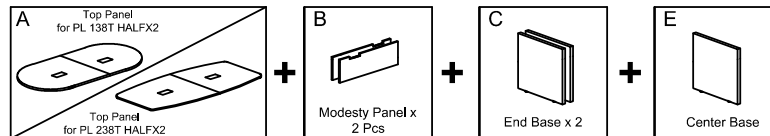
KLIX CAM INSTRUCTIONS



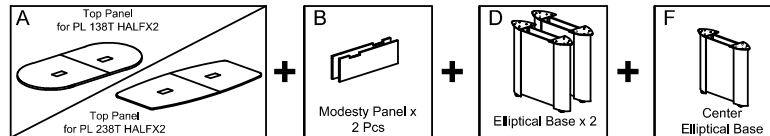
IMPORTANT NOTE :

- Place all wooden parts on a clean, smooth surface to prevent the parts from being scratched.
- Check to be sure that you have all parts and hardware.
- Remove all wrapping materials, including staples & packing straps before you start to assemble.
- Do not tighten all screws/bolts until all completely assembled.
- Keep all hardware parts out of reach of children.

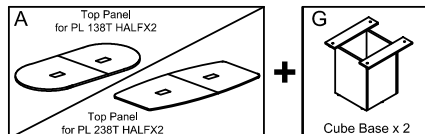
FOR END BASE



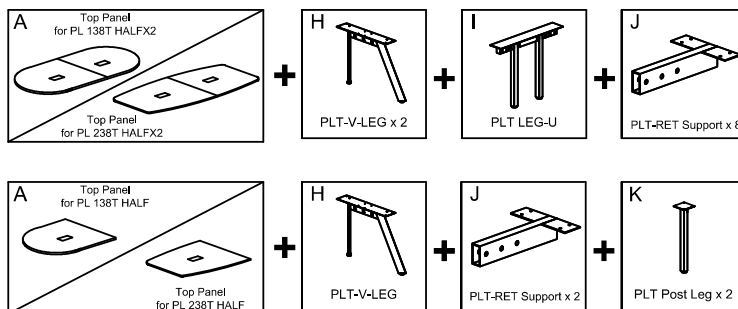
FOR ELLIPTICAL BASE



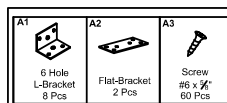
FOR CUBE BASE



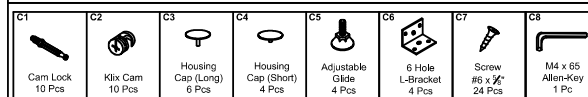
FOR V-LEG/U-LEG BASE



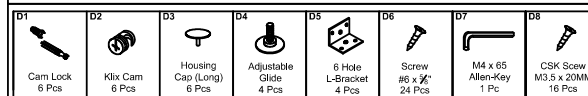
INCLUDED WITH TABLE TOP



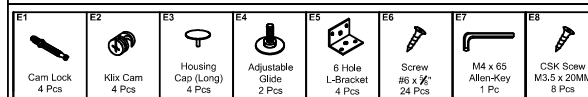
INCLUDED WITH END BASES



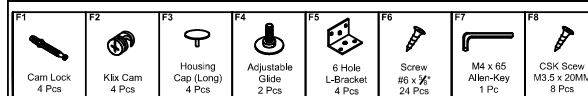
INCLUDED WITH ELLIPTICAL BASES



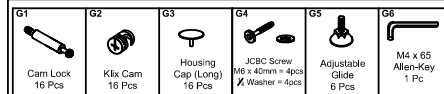
INCLUDED WITH CENTER END BASE



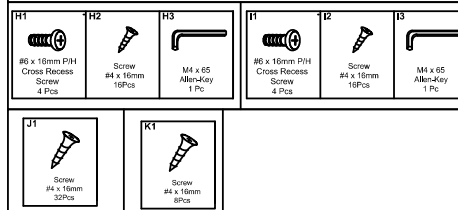
INCLUDED WITH CENTER ELLIPTICAL BASE



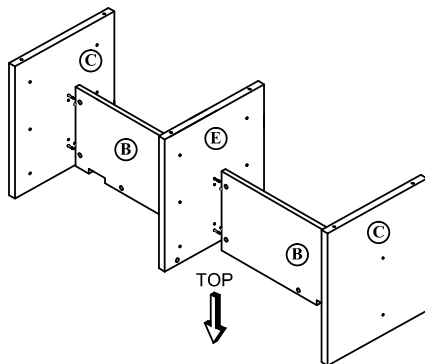
INCLUDED WITH CUBE BASE



INCLUDED WITH V-LEG/U-LEG/SQUARE POST LEG BASES

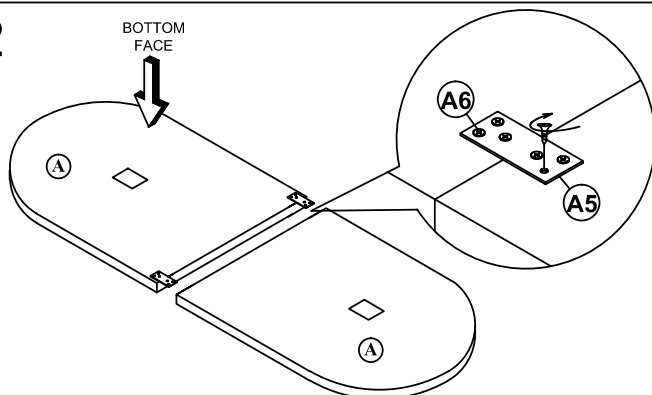


1



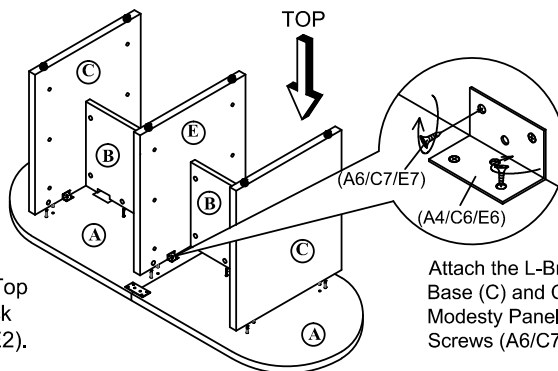
Attach the two End Base (C) and Center Base (E) to Modesty Panel (B) by using Cam Lock (C1) and Klix Cam (C2).

2



Attach the Flat-Bracket (A2) to two Top Panel (A) as shown. Tighten Screws (A3) securely.

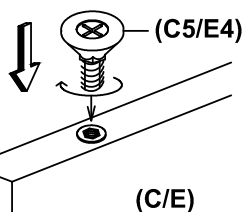
3



Attach the body (B/C/E) to Top Panel (A) by using Cam Lock (C1/E1) and Klix Cam (C2/E2).

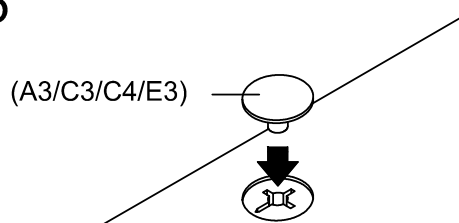
Attach the L-Bracket (A4/C6/E6) to End Base (C) and Center Base (E) and Modesty Panel (B) as shown. Tighten Screws (A6/C7/E7) securely.

4



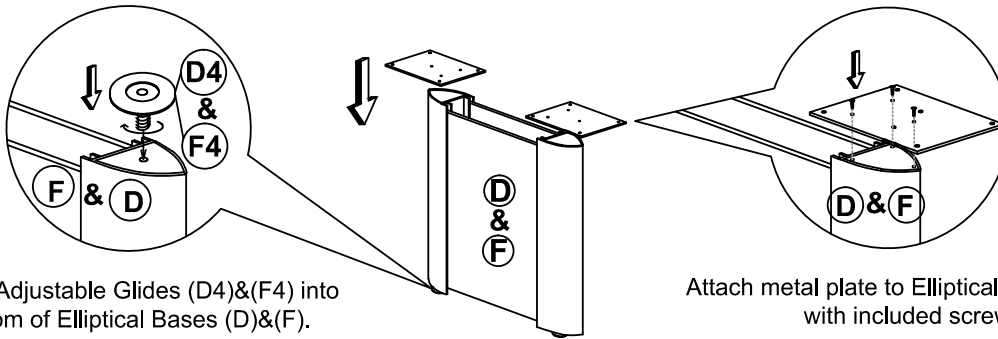
Screw Adjustable Glide (C5/E4) into bottom of End Base (C) & Center Base (E).

5



Attach Housing Cap (A3/C3/C4/E3) to all Klix Cam (A2/C2/E2) by pushing neck through center of cam.

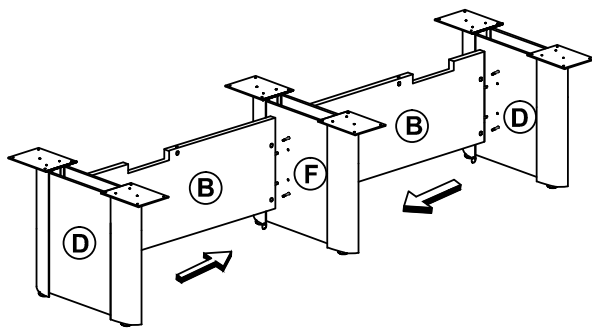
1



Screw Adjustable Glides (D4)&(F4) into bottom of Elliptical Bases (D)&(F).

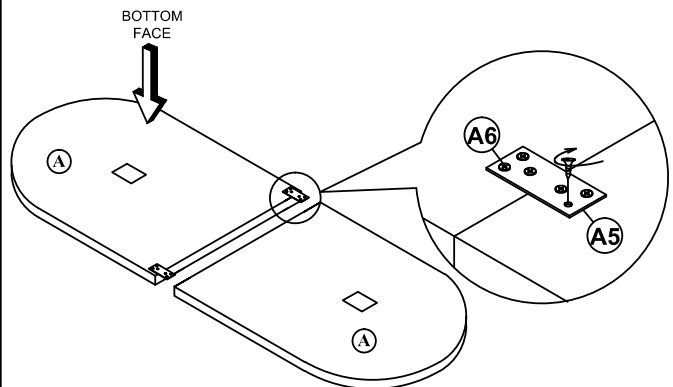
Attach metal plate to Elliptical Base (D)&(F) with included screws.

2



Attach Elliptical Base (D) and Center Elliptical Base (F) to Modesty Panel (B) by using Cam Lock (D1/F1) and Klix Cam (D2/F2).

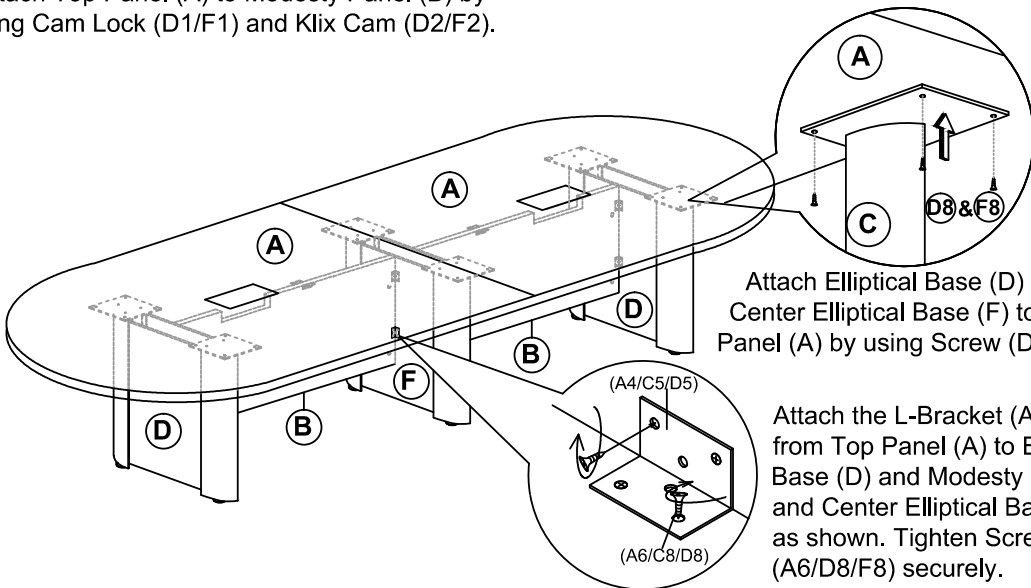
3



Attach the Flat-Bracket (A5) to two Top Panel (A) as shown. Tighten Screws (A6) securely.

4

Attach Top Panel (A) to Modesty Panel (B) by using Cam Lock (D1/F1) and Klix Cam (D2/F2).

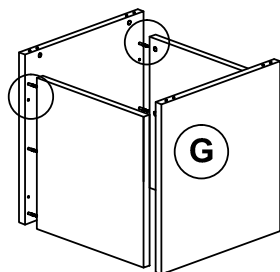


Attach Elliptical Base (D) and Center Elliptical Base (F) to Top Panel (A) by using Screw (D8/F8).

Attach the L-Bracket (A4/D5/F5) from Top Panel (A) to Elliptical Base (D) and Modesty Panel (B) and Center Elliptical Base (F) as shown. Tighten Screws (A6/D8/F8) securely.

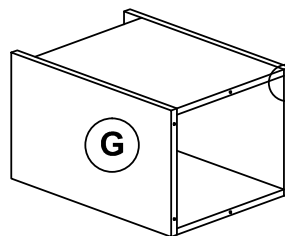
ASSEMBLING TABLE WITH V-LEG BASE

1



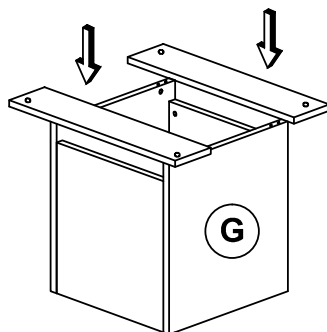
Attach Cube Base (G) by using Cam Lock (G1) and Klix Cam (G2).

2



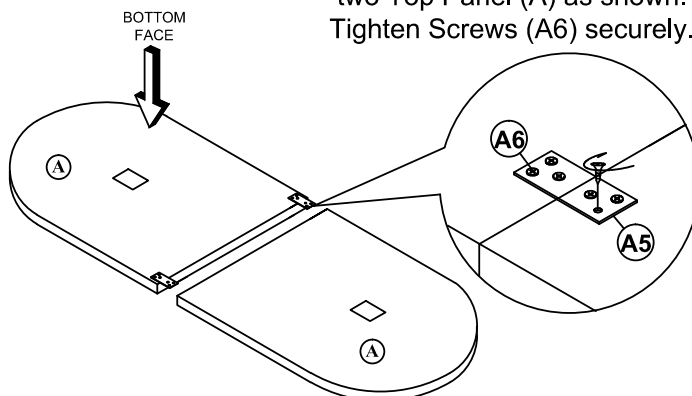
Screw Adjustable Glide (G5) into bottom of End Base (G).

3



Attach Cube Base Support (G) by using Cam Lock (G1) and Klix Cam (G2).

4



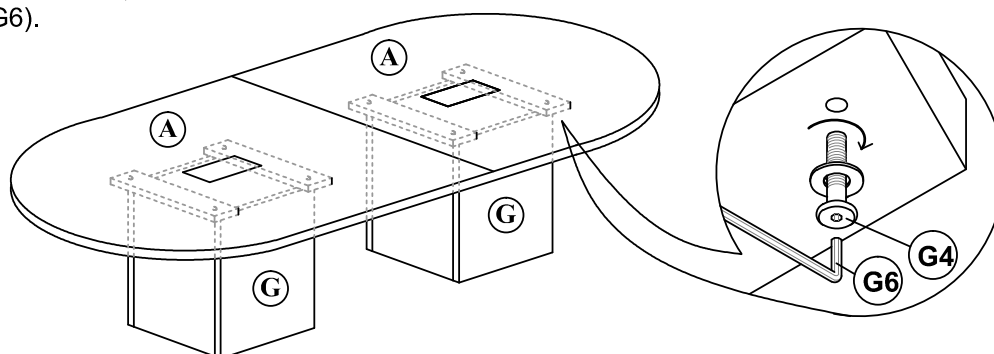
Attach the Flat-Bracket (A5) to two Top Panel (A) as shown. Tighten Screws (A6) securely.

Join the two Top Panels (A) by using KD Fitting (A1) and Klix Cam (A2).

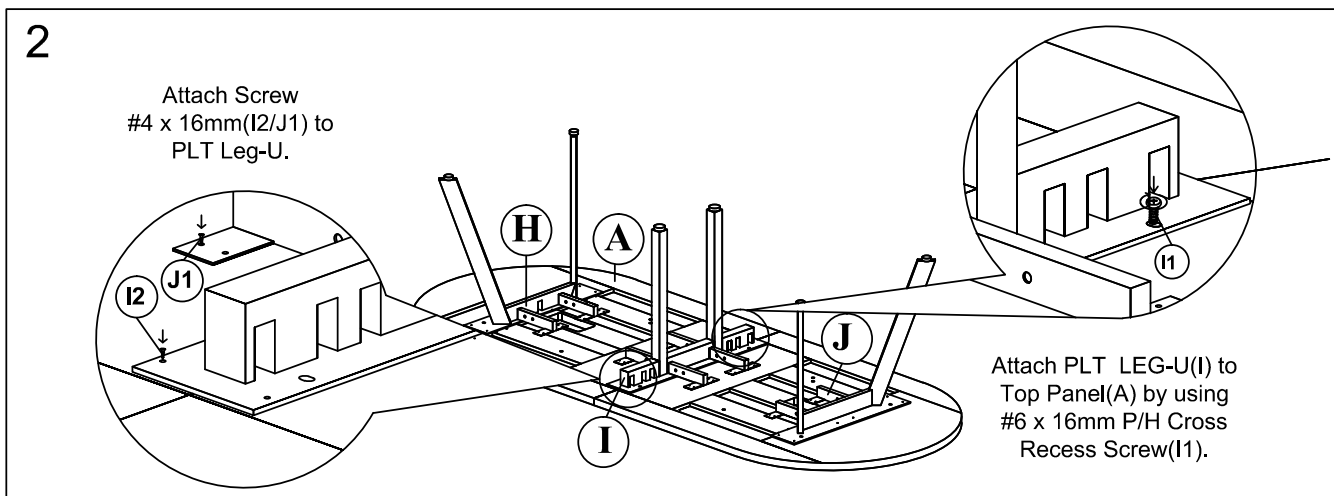
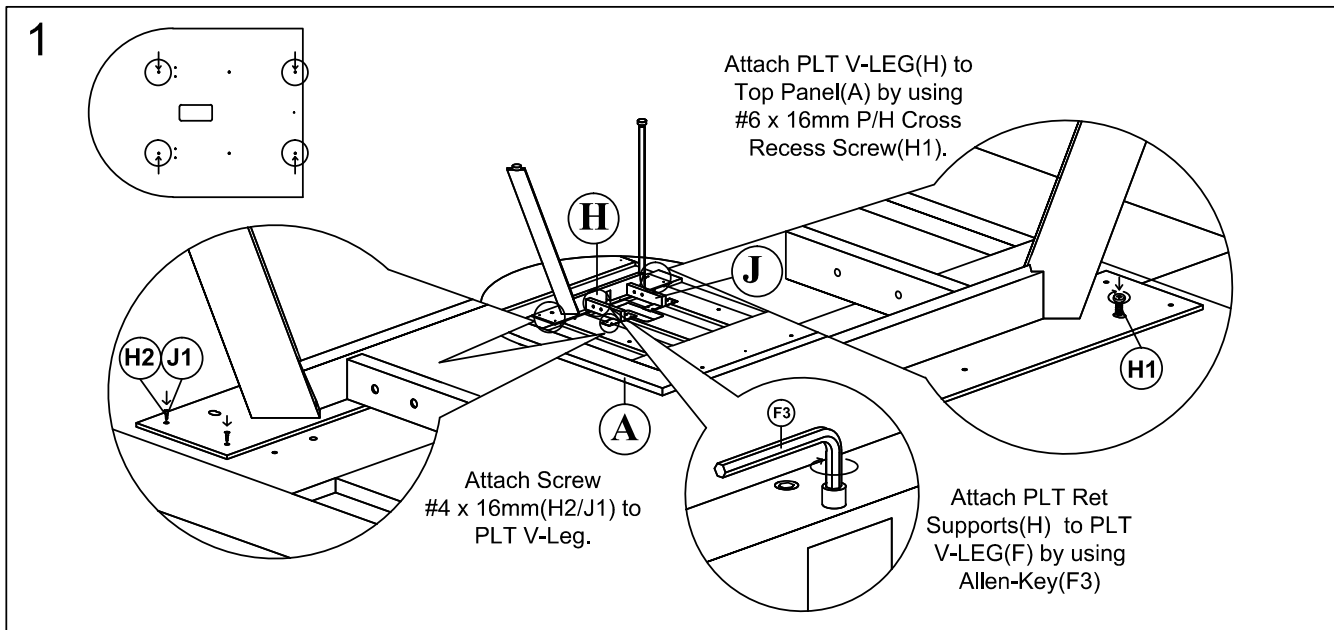
Attach the Fitting-GL Screw (A7) to two Top Panel (A) as shown by using Wrench (A8).

5

Attach Top Panel (A) to Cube Base (G) by using JCBC Screw (G4) and tighten with Allen Key (G6).



ASSEMBLING TABLE WITH V-LEG BASE



ASSEMBLING TABLE WITH V-LEG BASE + SQUARE POST LEG

