

Product Features:

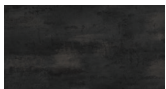
- Solid welded frame with an E-Coating powder finish that protects the frame from rusting
- Heavy-gauge, steel mesh seat that is maintainance free
- UV-Resistant; all season indoor & outdoor
- Adjustable levelers on matching table bases ensures stability on any ground
- BIFMA Load tested to 750 lbs without failure
- Quickship item
- Fully assembled
- Limited Lifetime Warranty
- Can be shipped by a small package carrier.

Material Attributes:

Frame	• Metal
Base / Legs	• Metal
Seat Cover	• Heavy Steel Mesh
Back Cover	• Metal

Product Dimensions:

Overall	16"W x 18"D x 32"H
Seat	16 1/4"W x 16 1/4"D x 18"H
Seat to Floor	1 1/4-1 4/4"H
Product Weight	22 lbs.
Weight Capacity	750 lbs.



BK Black Metal

Shipping Dimensions:

Carton Length	19"
Carton Width	19"
Carton Height	33"
Carton Weight	24 lbs.