

48" Height Adjustable Return



Hardware is packed with carton **EVH100BGG**

1  Screw Ø6X33mm 4pcs	2  Screw Ø5X20mm 1pcs	3  Screw Ø6X15mm 17pcs	4  Allen Wrench 5mm-1pc	5  Screw Ø6X12mm 6pcs	6  Wire Management Tray-1 pc	7  Mounting Plate 120*50*3-2pcs	8  Screw Ø5X55mm 2pcs
-----------------------------------	-----------------------------------	------------------------------------	----------------------------------	-----------------------------------	---------------------------------------	------------------------------------------	-----------------------------------

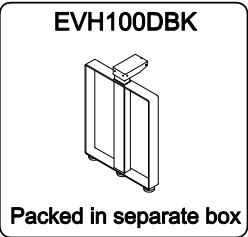
Hardware is packed with carton **EVH100DBK**

9  connection 2pcs	10  Screw M6X5mm 2pcs	11  Allen Wrench 3mm-1pc	5  Screw Ø6X15mm 4pcs	12  Allen Wrench 4mm-1pc	13  Screw M6*8 4pcs	14  Z-connection 2pcs
-----------------------------	-----------------------------------	-----------------------------------	-----------------------------------	-----------------------------------	---------------------------------	--------------------------------

EVH100BGG

D  Top panel 1Pc	E  Modesty panel 1Pc	C  Top support Bracket 1 Pc
---------------------------	-------------------------------	--------------------------------------

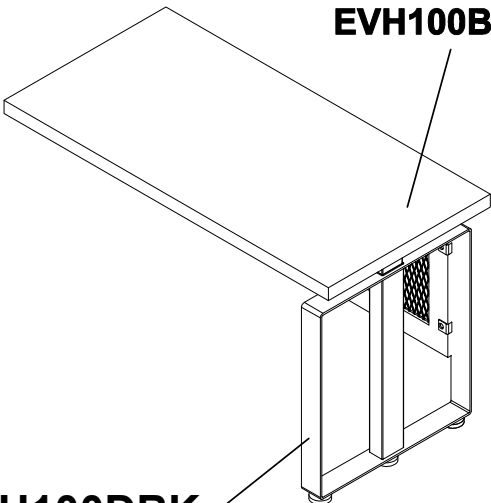
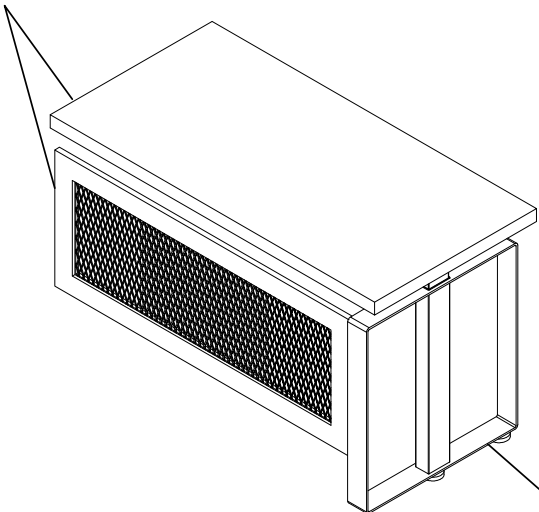
EVH100DBK



**EVH100BGG LEFT RETURN**

**RIGHT RETURN**

**EVH100BGG**



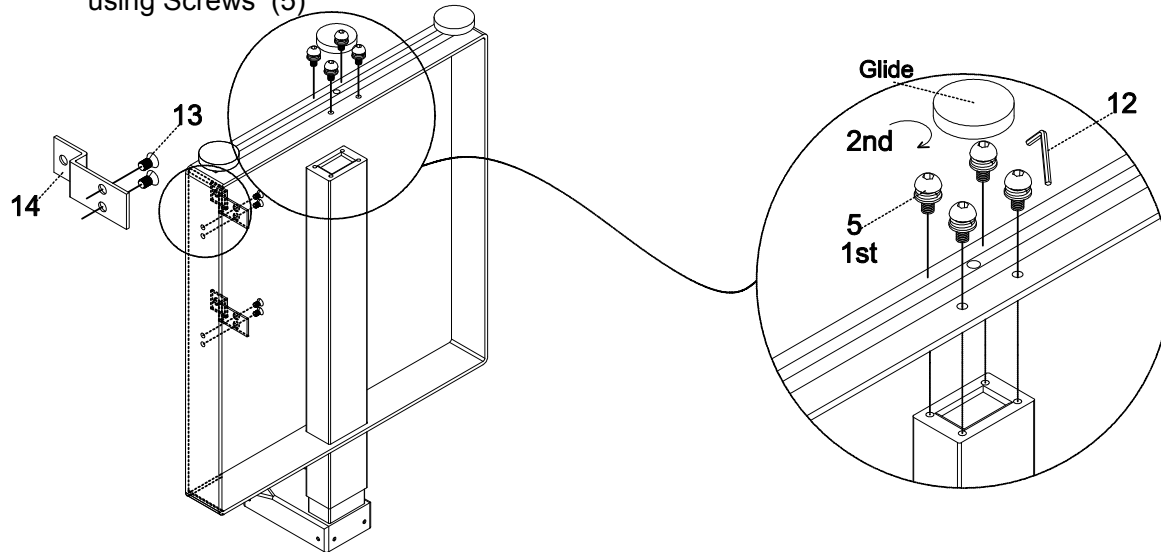
**EVH100DBK**

IMPORTANT NOTE:

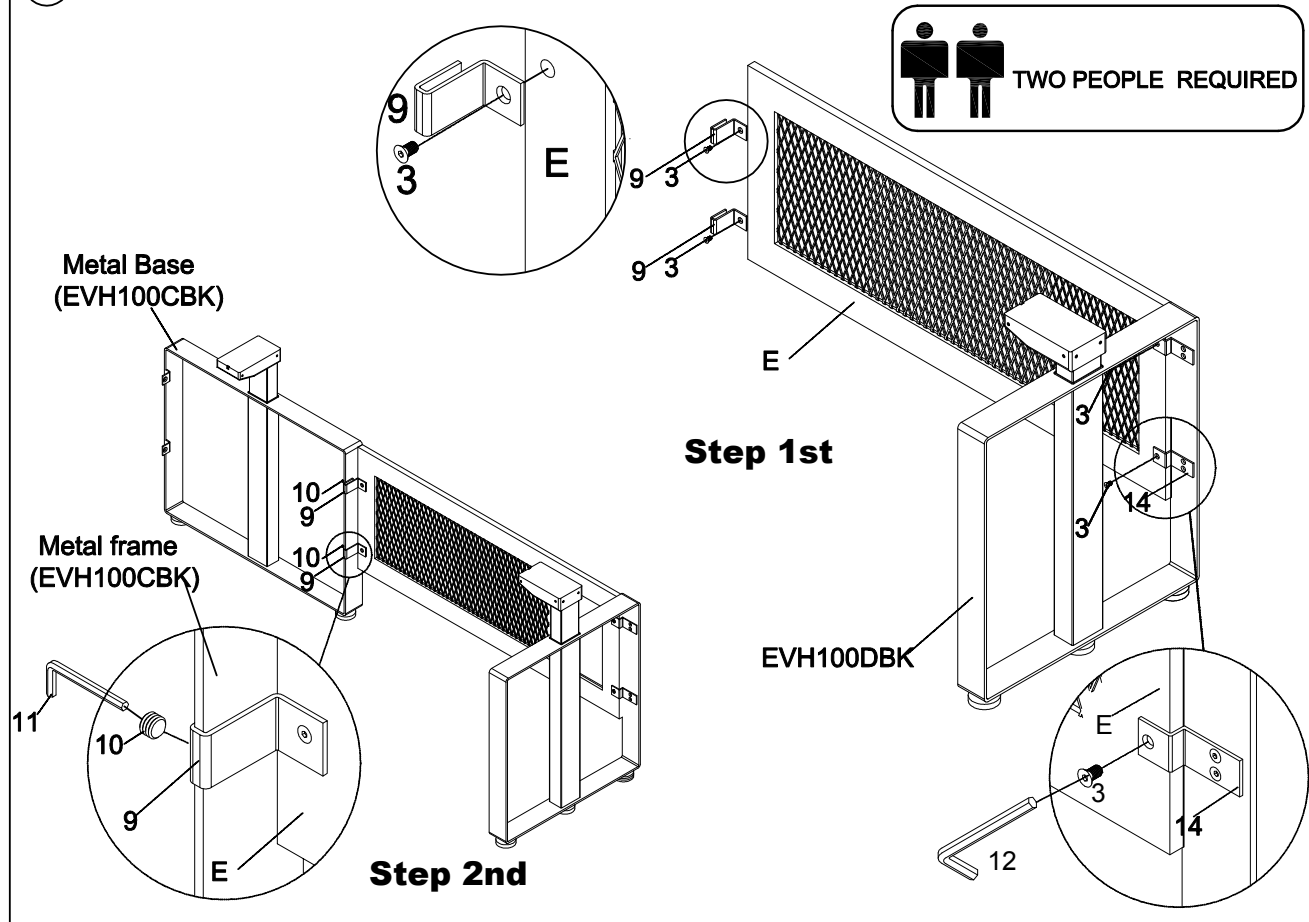
Place all wooden parts on a clean and smooth surface such as a rug or carpet to avoid the parts from being scratched  
Check that you have all parts and hardware.  
Remove all wrapping materials, including staples & packing straps before you start assemble.  
Do not tighten all screws or bolts untill all completely assembled.  
Keep all hardware parts out of reach of children.

NOTE: The Return Desk can be installed as a Left Handed or Right Handed. Right Handed is shown in the instructions. If Left Hand is desired, attach Modesty Panel (E) to other side in Step 2.

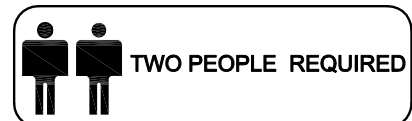
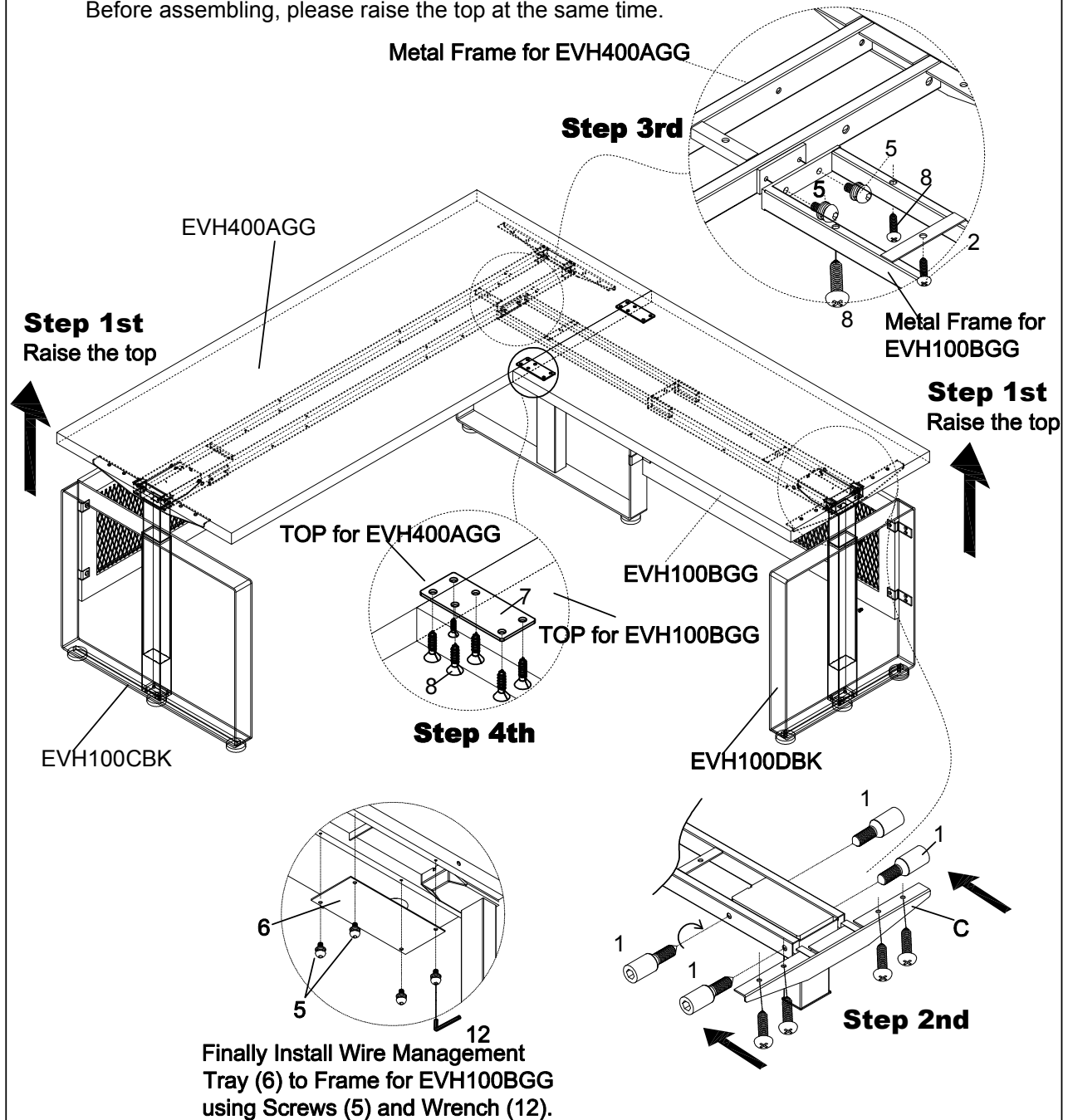
- ① Assemble Metal Base (EVH100DBK) using Screws (5)

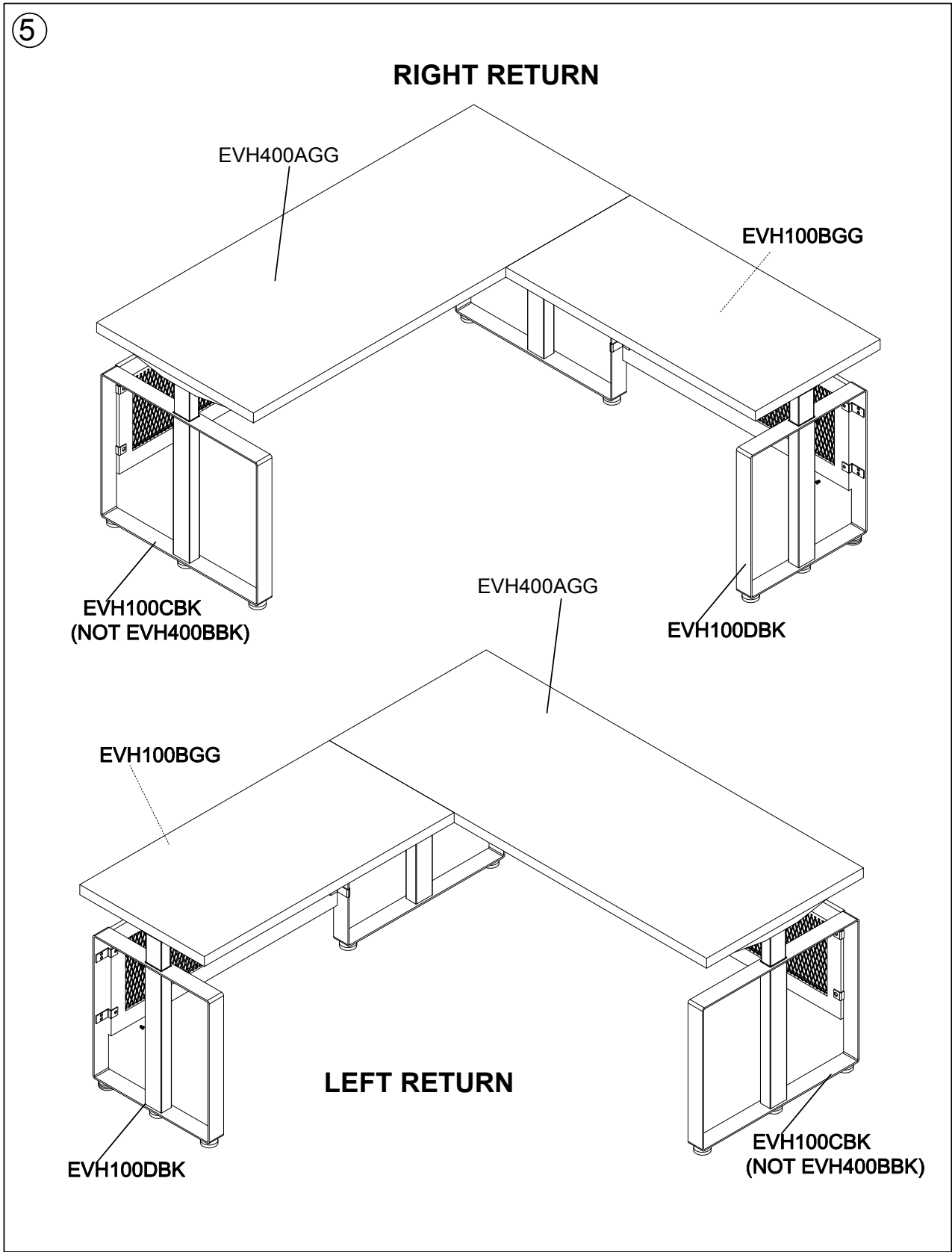


- ② Assemble Modesty Panel (B) to Metal Base (EVH100CBK) using Screws (3)



- ③ Assemble **Return** (EVH100BGG) with Main Desk EVH400AGG  
Before assembling, please raise the top at the same time.







Make sure no obstacles are in the desk's path.



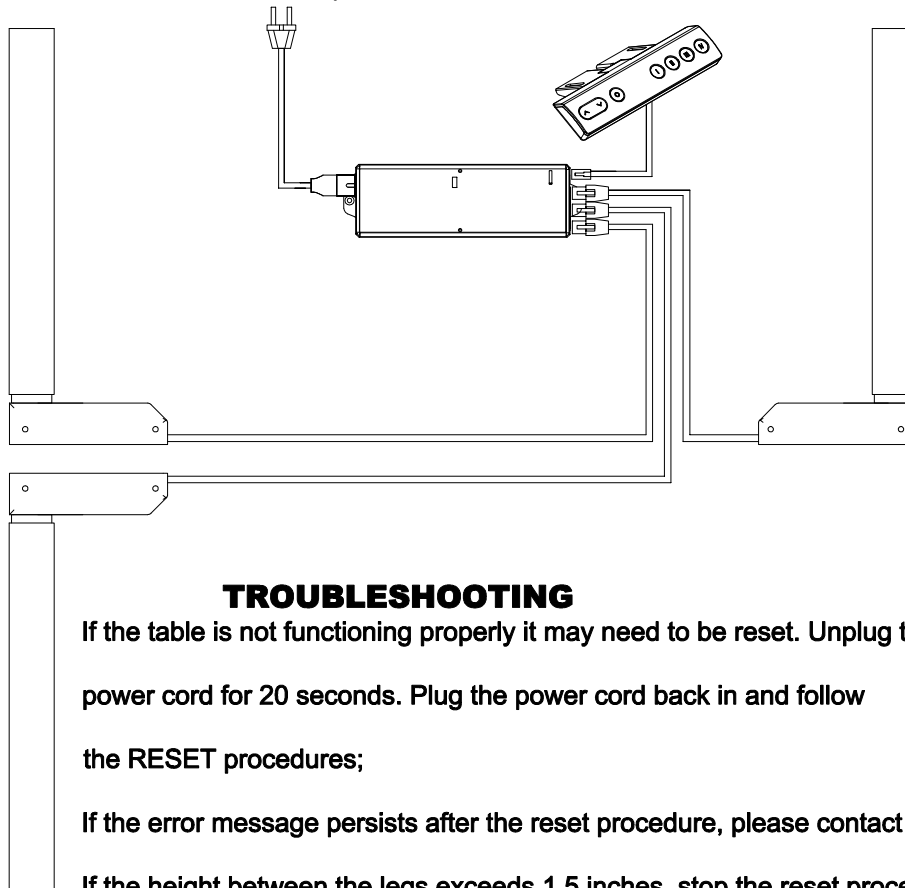
Make sure the desktop is not touching any walls.

Make sure all cords are appropriate length to accommodate the change in height.

**IMPORTANT:** You must INITIALIZE the desk prior to first use.

**Controller Initialization-** Press and hold the Down button on the controller until the desk reaches its lowest height, slightly raises, and stops. Release the down button, your desk is now ready for use. (Following the "USER MANUALS" to use your desk)

Hardware is packed with carton **EVH100CBK**



### TROUBLESHOOTING

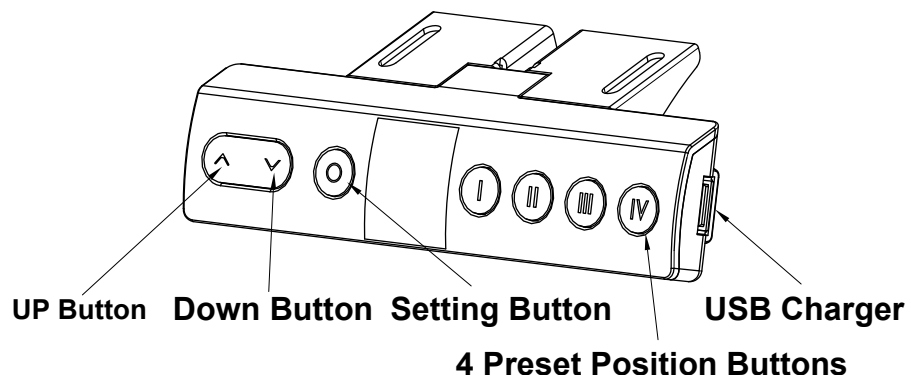
If the table is not functioning properly it may need to be reset. Unplug the power cord for 20 seconds. Plug the power cord back in and follow the RESET procedures;

If the error message persists after the reset procedure, please contact your dealer;

If the height between the legs exceeds 1.5 inches, stop the reset procedure, please contact your dealer;



## USER MANUAL



⚠ Make sure no obstacles are in the desk's path. ⚠  
Make sure the desktop is not touching any walls.  
Make sure all cords are appropriate length to accommodate the change in height.

**DESK MUST BE INITIALIZED BEFORE YOUR FIRST USE**, and may need to be reinitialized (reset) from time to time to work properly. Use Height Controller to initialize. If your desk has Bluetooth option, initializing and programming can also be done with your phone. Please refer the detailed APP Manual.

**INITIALIZATION:** Press and hold **Down Button** until RST appears on the display. The desk will first go to the lowest position, then rise slightly and stop. Release the **Down Button**, Your desk is now ready to use.

**RESET:** Please note that desk needs to be reset from time to time when it is not working properly in events like sudden power outage and etc. The reset process is the same as initialization and requires more than a simple power-off and power-on for most electronic devices. Unplug the power cord for 20 seconds, plug back in and follow initialization procedure.

**PROGRAM UP/DOWN:** Press the **UP Button**, the legs will move up; Press **DOWN Button**, the legs will move down; release to stop movement .

**PROGRAM HEIGHT LIMITS:** Move the desk to your desire upper height limit. Press the **Setting Button** and **Up Button** simultaneously for one second. The upper limit is set when HI is displayed. To cancel, press the same buttons again. The upper limit is cancelled when HCL is displayed. To set lower height limit, press **Setting Button** and **Down Button** simultaneously for one second. The lower limit is set when LO is displayed. To cancel, press the same buttons again. The lower limit is cancelled when LCL is displayed. If you need to program height limits, always do it before you program presets.

**PROGRAM POSITION PRESETS:** Use **Up and Down Buttons** to move desk to your desired position, press **SETTING button** and one of the four Preset Position buttons simultaneously. You can program up to four presets. The panel will display 1CF, 2CF, 3CF and 4CF for each preset when it is done.

**PROGRAM INCH/CM:** Press the **Setting Button** for 7 seconds until SET is display, and then press the **first Preset Button**. The LED will show the default unit of measurement, then press **Up Button** or **Down button** to change.

**PROGRAM SENSITIVITY OF GYROSCOPIC ANTI-COLLISION:** Press and hold the Setting Button for 7 seconds until SET is displayed on screen, and then press the "III" button to enter sensitivity setting mode. Then, press up or down buttons to switch levels among 1~8(Default is Level 5), and the higher level features higher sensitivity. Press the Setting Button to confirm selection.

**PROGRAM SENSITIVITY OF ELECTRIC CURRENT:** Press and hold "II" button & "III" buttons simultaneously for about 7 seconds to enter setting mode, and press up or down button to switch levels among 1~3(Default is Level 3),the higher level features higher sensitivity. Press the Setting Button to confirm selection.

**LOCKING:** Press and hold "I" button & "II" button simultaneously to lock or unlock the device, any operation will not work after locking.

**OVERHEAT:** To avoid overheating, don't move the desk up and down continuously for over two minutes within any 20 minute period. If the desk overheats, LED will display OH. Stop using the desk for 18 minutes and let the desk cool down.



## TROUBLESHOOTING

Issues/Error Message	Solution
Desk does not go up or down. The controller illuminates when any button is pressed.	Unplug the power cord. Wait for 20 seconds and re-plug. Reset desk. If the problem persists, switch motor cables at control box and attempt another reset.
Desk does not go up or down. The controller does not illuminate when any button is pressed.	Check all connections. Make sure power cord is plugged into the control box and a power outlet. Reset desk when the controller illuminates. If the problem persists, switch motor cables at control box and attempt another reset.
Desk is unusually noisy	The desk has multiple stages. It is normal that it is noisier when one stage extends into another. Apply silicon lubricant if it is unusually noisy.
Columns do not go up evenly	Unplug the power cord. Wait for 20 seconds and re-plug. Reset desk. If the problem persists, switch motor cables at control box and attempt another reset.

## TROUBLESHOOTING

Issues/Error Message	Solution
Desk does not reset	Perform a hard reset. Unplug one motor cable and press up button. ER1 or ER2 will be displayed. Unplug the power cord, wait for 20 seconds and re-plug. Reset the desk. If the problem persists, switch motor cables at control box and attempt another reset.
Overheat (on Bluetooth device)	The message is displayed as OH on the controller. Stop using the desk for 10 minutes and let the desk cool down.
Motor Jam (on Bluetooth device)	The message is displayed on the controller as ER1 or ER2. Unplug the power cord, waiting for 20 seconds and re-plug. Reset the desk. If the problem persists, switch motor cables at control box and attempt another reset.
Motor Speed Malfunction (on Bluetooth device)	Unplug the power cord. Wait for 20 seconds and re-plug. Reset desk. If the problem persists, switch motor cables at control box and attempt another reset.
Motor Wire Malfunction (on Bluetooth device)	The message is displayed on the controller as ER1 or ER2. Unplug the power cord, waiting for 20 seconds and re-plug. Reset the desk. If the problem persists, switch motor cables at control box and attempt another reset.