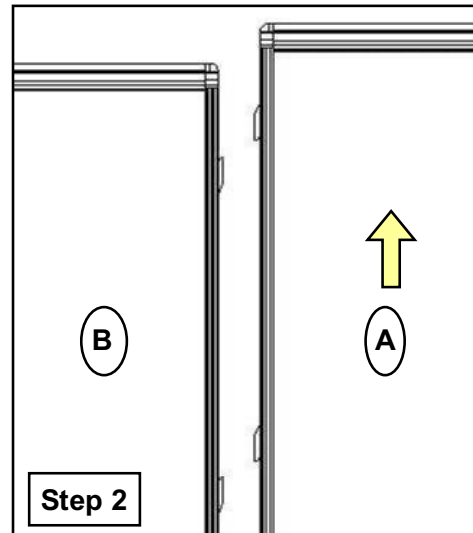
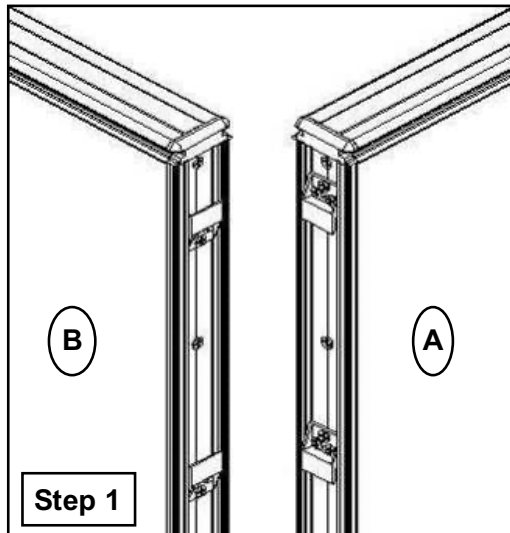


### INSTALLATION OF PANEL TO PANEL OF SOLERO



#### **INSTRUCTIONS :**

**Step 1 :** Please note that the nylon brackets are facing downward on panel (A), and upward on panel (B)

**Step 2 :** Lift panel (A) with nylon brackets facing downward a few inches higher so that it can "Clip Locked" onto panel (B) with nylon brackets facing upward

**Step 3 :** To install and lock, pull panel (A) downward to lock onto left panel (B). The panel is now installed

**Step 4 :** Once panel (A) and panel (B) are in locked position, use the height adjustable glides at base of panels to adjust for any uneven floors

