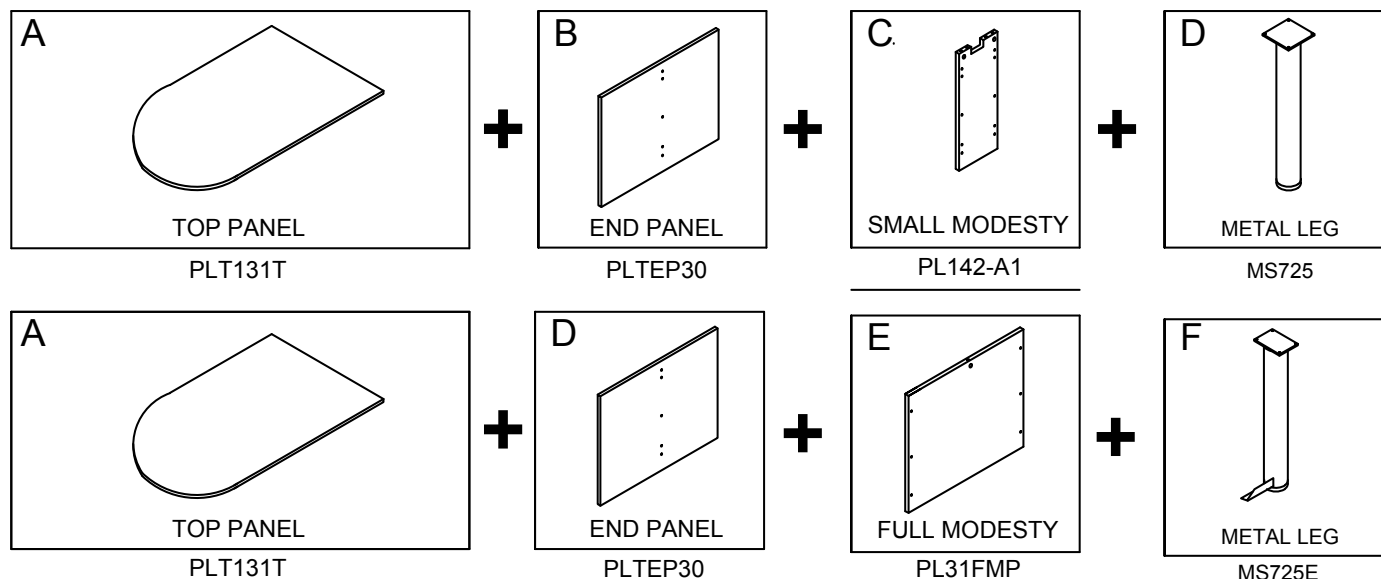


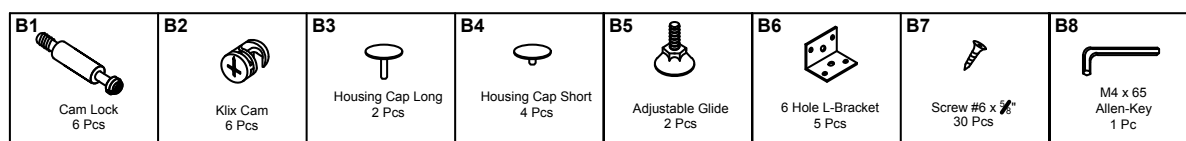
### IMPORTANT NOTE :

- Place all wooden parts on a clean , soft surface to prevent the parts from being scratched.
- Check to be sure that you have all parts and hardware.
- Remove all wrapping materials, including staples & packing straps before you start to assemble.
- Do not tighten all screws/bolts until all completely assembled.
- Keep all hardware parts out of reach of children.

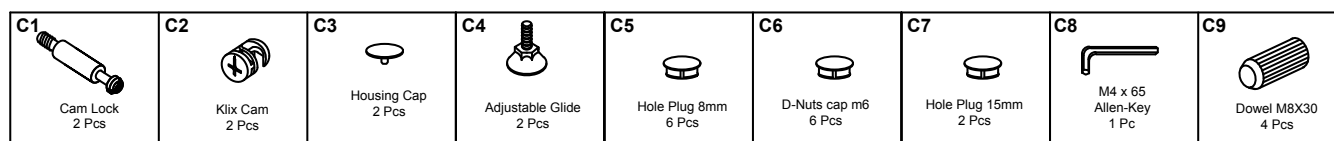
COMPONENTS:



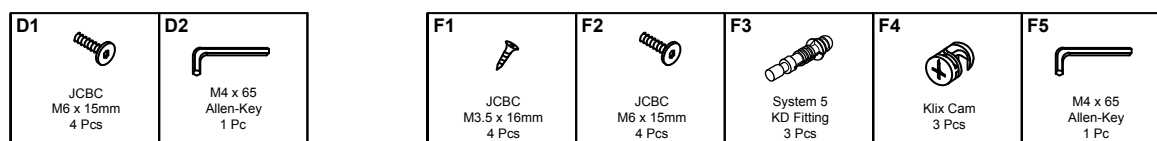
HARDWARE:



Hardware pack with PLTEP30



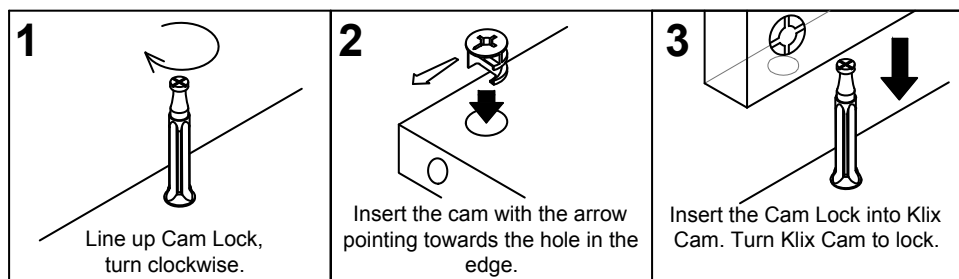
Hardware pack with PL142-A1



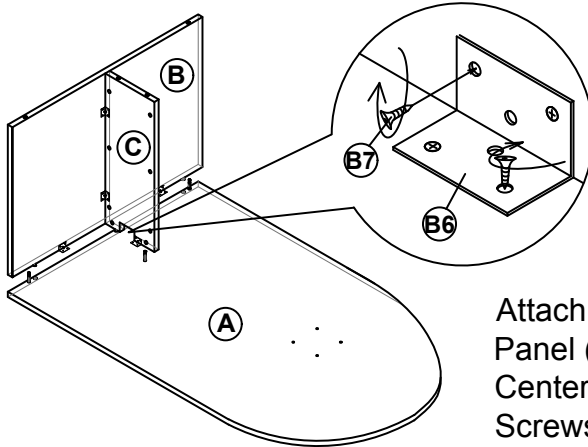
Hardware pack with MS725

Hardware pack with MS725E

**KLIX CAM INSTRUCTIONS**



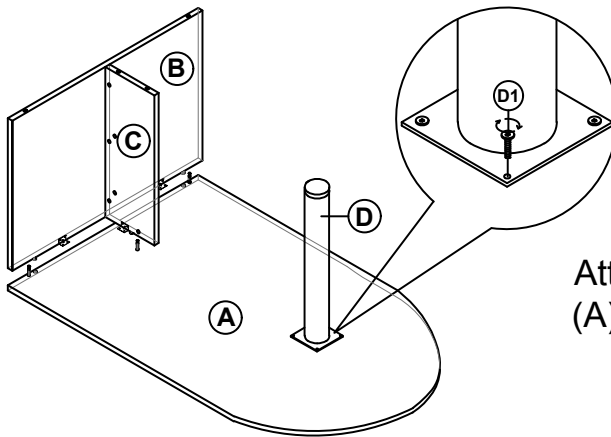
1



Attach the Small Modesty Panel (C) and Side Panel (B) to Top Panel (A) by using Cam Lock (B1/C1) and Klix Cam (B2/C2).

Attach the L-Brackets (B6) to Top Panel (A), Side Panel (B) and Side Center Panel (C) as shown. Tighten Screws (B7) securely.

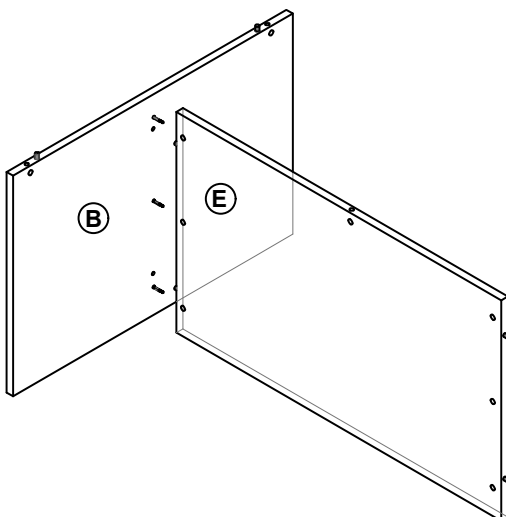
2



Attach the Metal Leg (D) to Top Panel (A) with JCBC Bolts (D1).

## OPTION 2

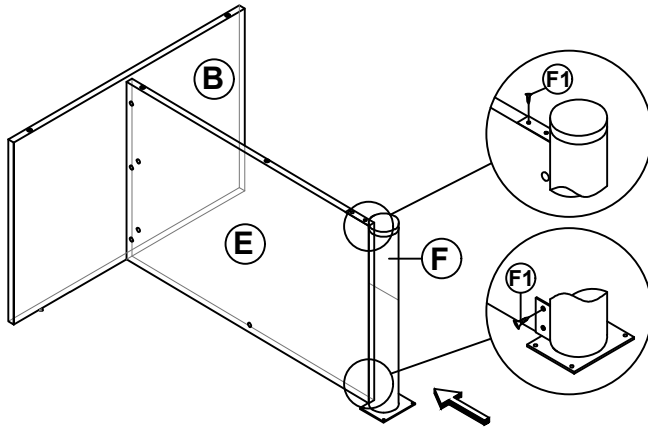
1



Attach the Full Modesty Panel (E) to Side Panel (B) by using Cam Lock (B1) and Klix Cam (B2).



2

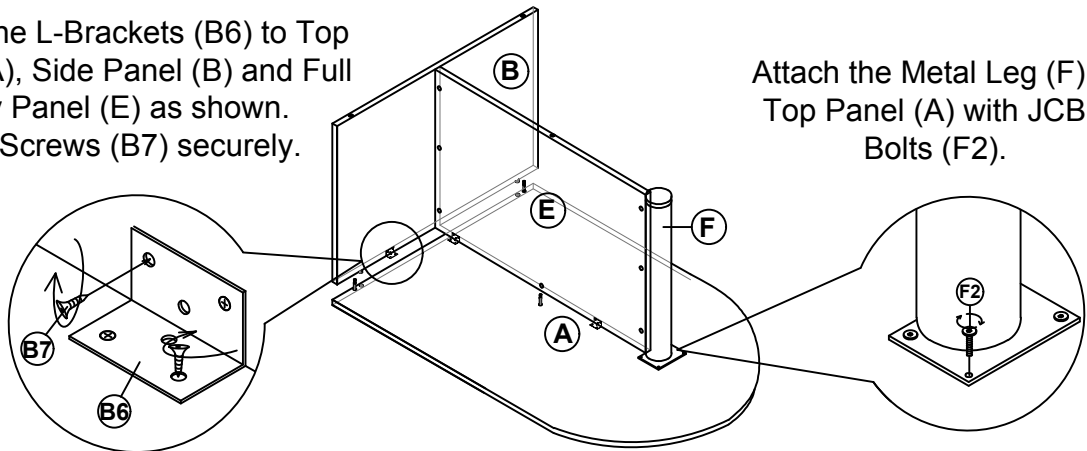


Secure Metal Leg (F) with  
Screws (F1).

Attach the Metal Leg (F) to Full  
Modesty Panel (E) by using System 5  
KD Fitting (F3) and Klix Cam (F4).

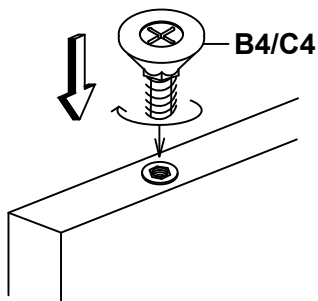
3

Attach the L-Brackets (B6) to Top  
Panel (A), Side Panel (B) and Full  
Modesty Panel (E) as shown.  
Tighten Screws (B7) securely.



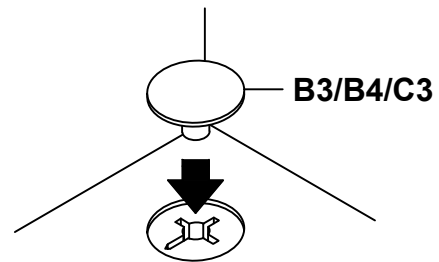
Attach the Metal Leg (F) to  
Top Panel (A) with JCBC  
Bolts (F2).

4



Screw Adjustable Glide (B4/C4)  
into bottom of Side Panel (B) and  
Modesty Panel (C/E).

5



Attach Housing Cap(B3/B4/C3)  
to all Klix Cam(B2/C2) by pushing  
neck through center of cam.