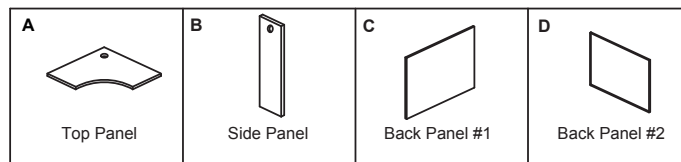
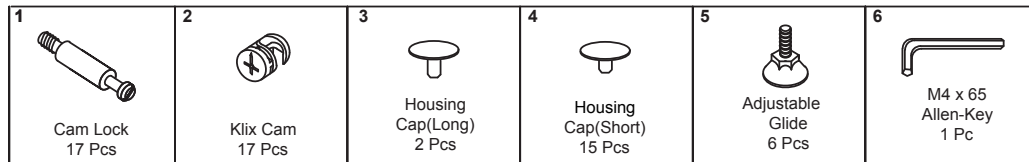
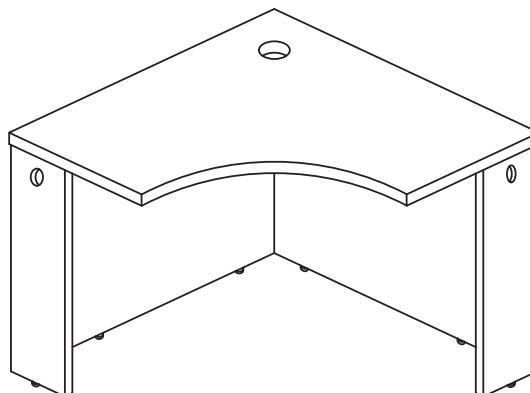
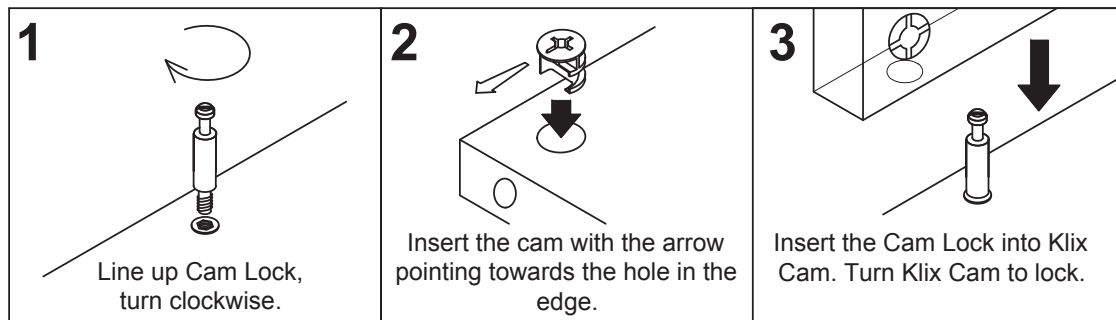


Please follow these instructions for easy assembly.



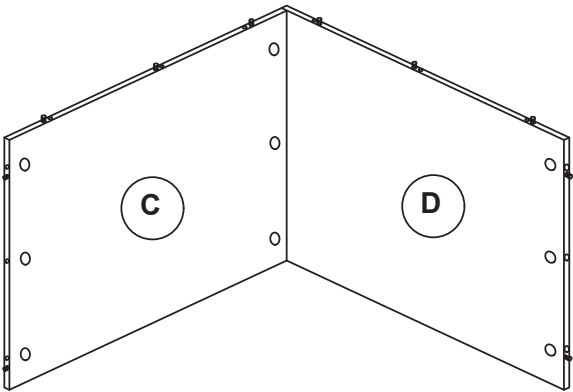
### KLIX CAM INSTRUCTIONS



### IMPORTANT !!

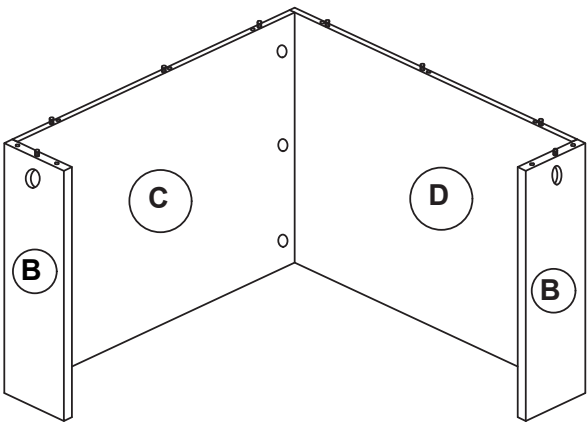
- Place all wooden parts on a clean and smooth surface such as a rug or carpet to avoid the parts from being scratched.
- Check that you have all parts and hardware.
- Remove all wrapping materials, including staples & packing straps before you start to assemble.
- Do not tighten any screws or bolts until the unit is completely assembled.
- Keep all hardware parts out of reach of children.

1



Attach the Back Panel (C) to  
Back Panel (D) by using Cam  
Lock (1) and Klix Cam (2).

2



Attach the Side Panel (B) to  
Back Panel by using Cam Lock  
(1) and Klix Cam (2).

