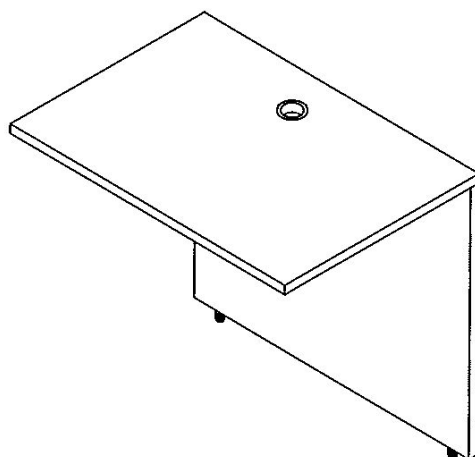
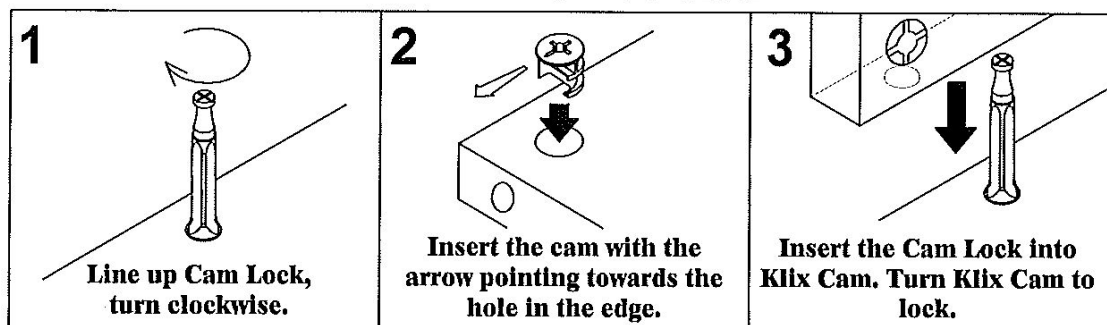


KLIX CAM INSTRUCTIONS

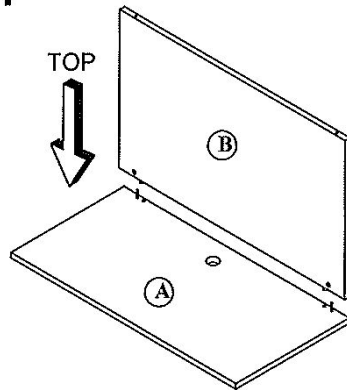


IMPORTANT !

- Place all wooden parts on a clean and smooth surface such as a rug or carpet to avoid the parts from being scratched.
- Check that you have all parts and hardware.
- Remove all wrapping materials, including staples & packing straps before you start to assemble.
- Do not tighten any screws or bolts until the unit is completely assembled.
- Keep all hardware parts out of reach of children.

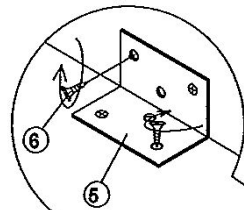


1

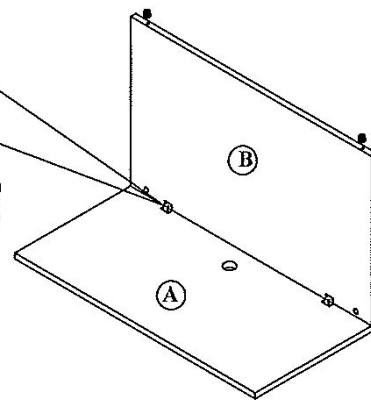


Attach Back Panel(B) to Top Panel(A) by using Cam Lock(1) and Klix Cam(2).

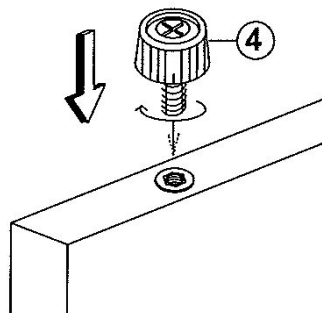
2



Attach L-Bracket(5) to Top Panel(A) and Back Panel(B) as shown. Tighten Screws(6) securely.

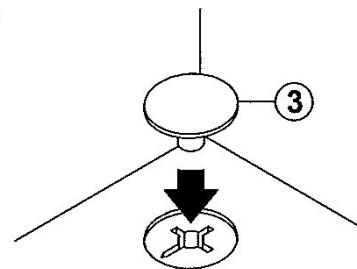


3



Screw Adjustable Glide(4) into bottom of Side Panel.

4



Attach Housing Cap(3) to all Klix Cams(2) by pushing neck through center of cam.