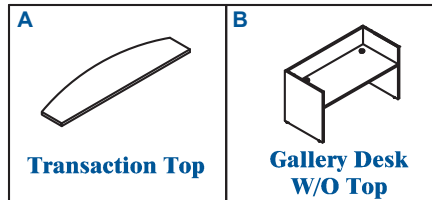
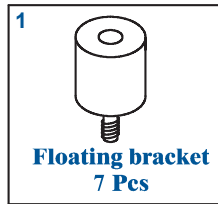


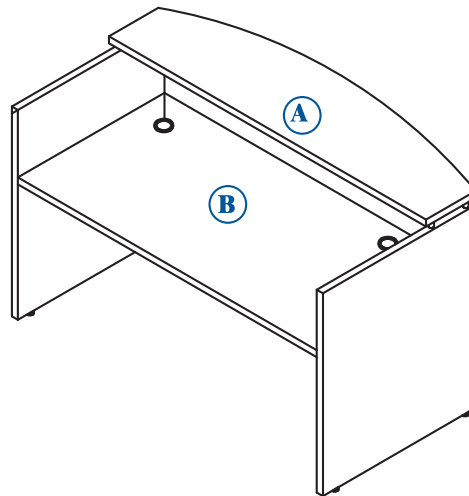
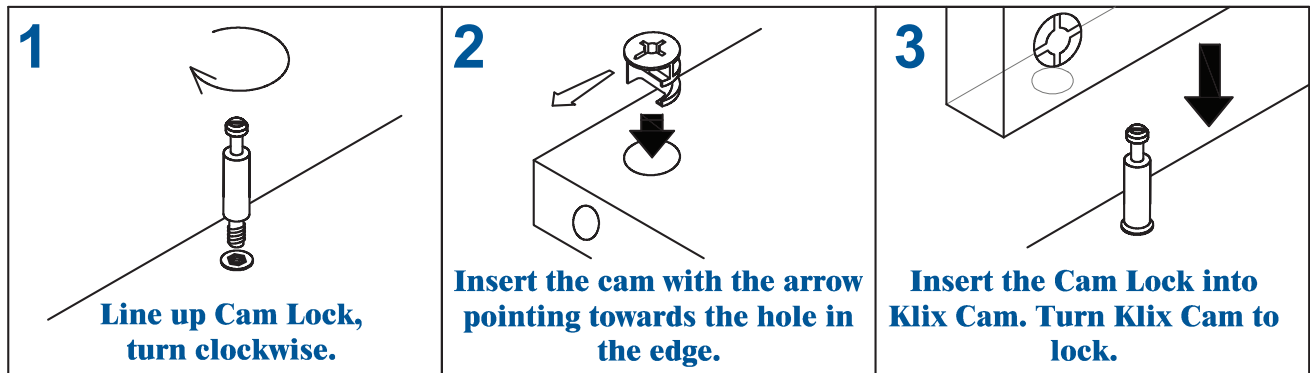
OfficeSource® ASSEMBLY INSTRUCTIONS

MODEL: PL169TT, PL169RISERBRU

OPTIONAL TRANSACTION TOP + RISER



KLIX CAM INSTRUCTIONS



IMPORTANT !!

- Place all wooden parts on a clean and smooth surface such as a rug or carpet to avoid the parts from being scratched.
- Check that you have all parts and hardware.
- Remove all wrapping materials, including staples & packing straps before you start to assemble.
- Do not tighten any screws or bolts until the unit is completely assembled.
- Keep all hardware parts out of reach of children.

OfficeSource® ASSEMBLY INSTRUCTIONS

MODEL: PL169TT, PL169RISERBRU

OPTIONAL TRANSACTION TOP + RISER

