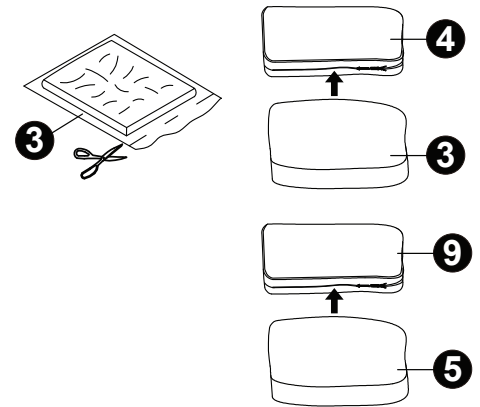
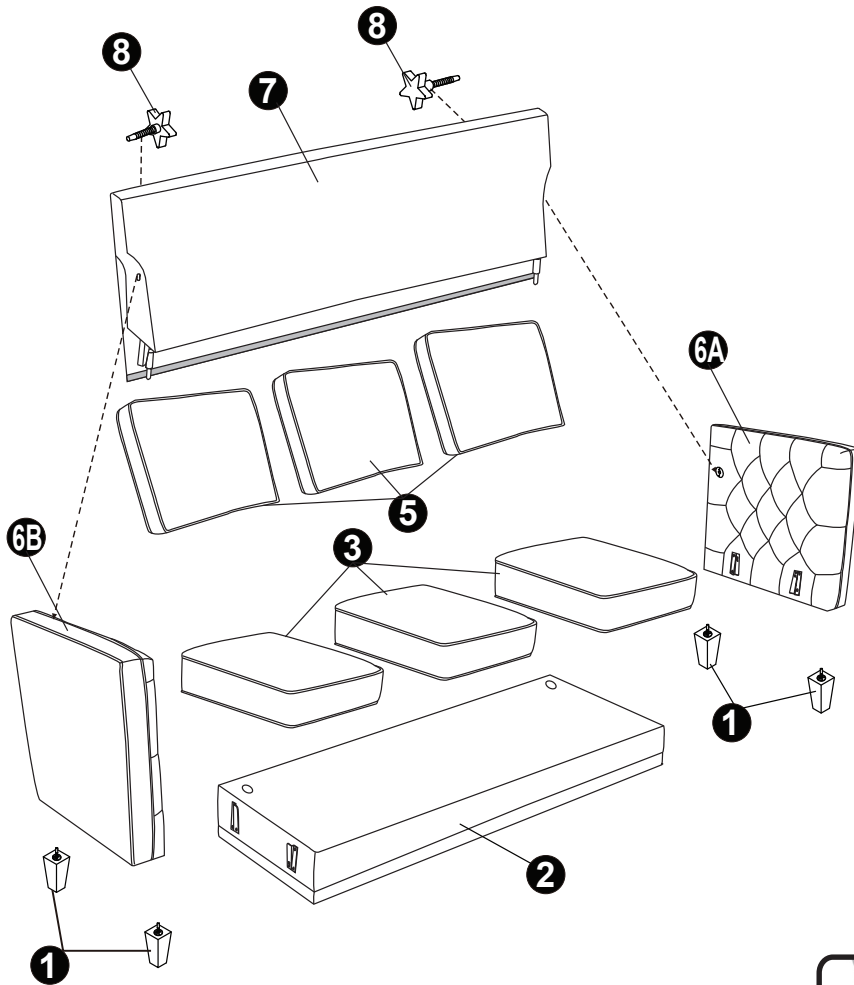


Newton Collection Sofa

PARTS LIST

Part #	Description	Quantity
1	Wood Legs with Washers	4
2	Seat Frame	1
3	Seat Cushions	3
4	Seat Covers	3
5	Back Cushions	3
6A	Armrest with "R" Label	1
6B	Armrest with "L" Label	1
7	Back Frame	1
8	Thumb Bolts	2
9	Back Covers	3



A



B

ASSEMBLY INSTRUCTIONS

1. Remove all parts from the carton and separate them into part number groups as indicated in the parts list. Remove the plastic caps on the threaded bolts of each leg. Attach the Wood Legs with Washers (1) to the bottom of the Armrests (6A & 6B) as shown in Diagram 2.
 2. There is a connection between Arms (6A & 6B) and Seat Frame (2). Slide the Armrest with "L" Label (6B) into the Seat Frame (2) until fully engaged as shown in Diagram 3. Assemble the other parts in the same way.
 3. Turn over the Seat Frame (2) and slide the Back Frame (7) into the Seat Frame (2) until fully engaged as shown in Diagram 4. Align the holes of the Back Frame (7) to the Arm Frames (6A & 6B) and secure with two Thumb Bolts (8) as shown in Diagram 5.
 4. Secure the bottom and back flaps with hook and loop tape.
 5. Open the vacuum packed Seat Cushions (3) by carefully cutting the bags with a pair of scissors. Insert the Back Cushions (5) into the appropriate Back Covers (9). Insert the Seat Cushions (3) into the appropriate Seat Covers (4). Remember to keep the top side of the Seat Cushions (3) with the top side of the Seat Covers (4). Fluff all cushions to allow them to expand. Lastly, position all cushions on the sofa. Seat and back cushions may take 24-48 hours to fully expand, which will allow wrinkles and indentations caused by packing to fade.
- ATTENTION:** To close the zipper, please follow diagram A. Failure to follow this could result in damage to the zipper.

Newton Collection Sofa

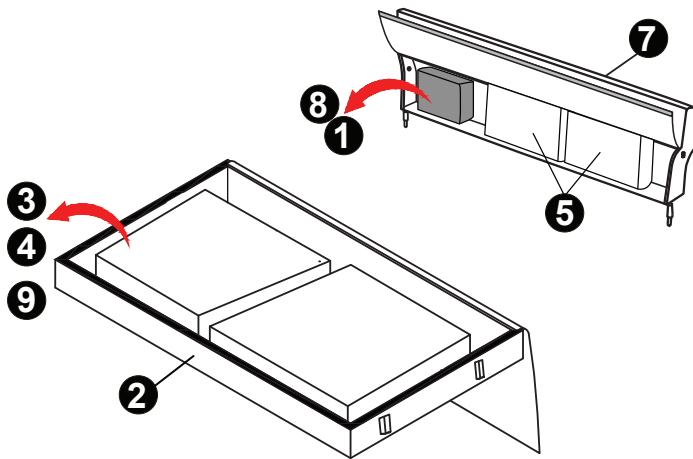


Diagram 1

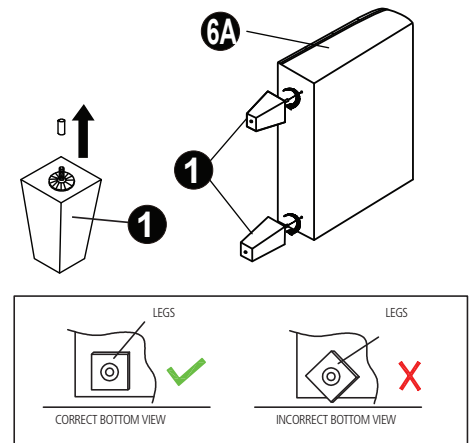


Diagram 2

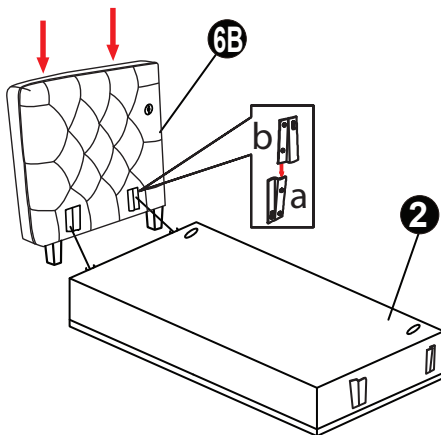


Diagram 3

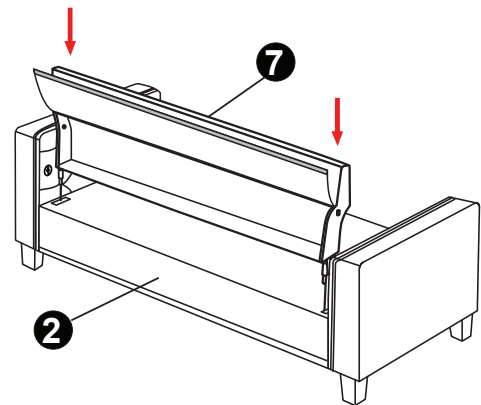


Diagram 4

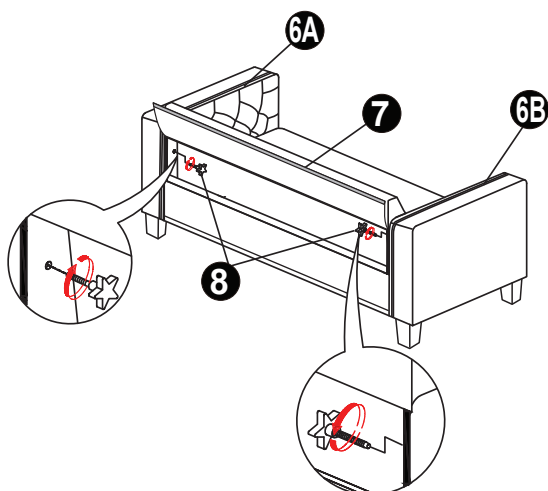


Diagram 5

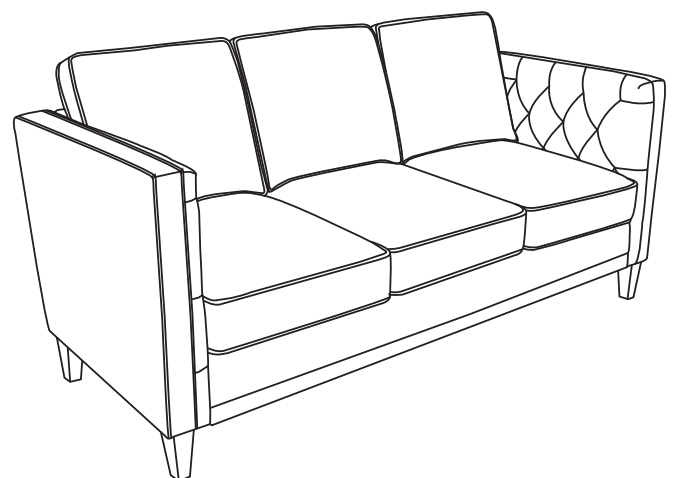


Diagram 6

Item Number: 483-7276-33

OfficeSource®