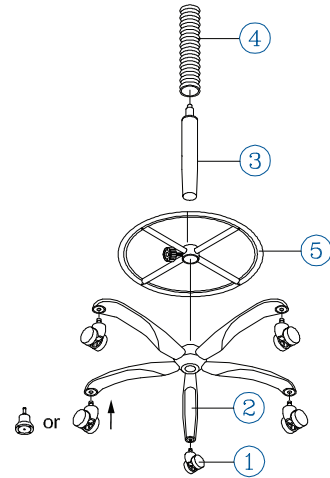


PARTS LIST

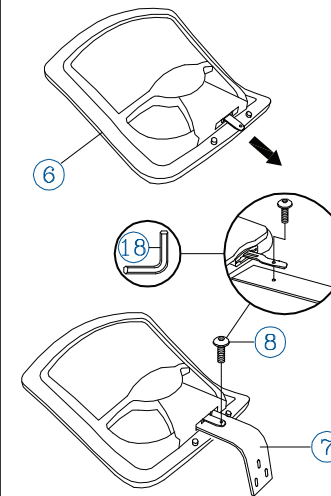
Remove all items from the carton. Verify all pieces before assembly. Keep this page for future reference.

KEY QTY	DESCRIPTION	KEY QTY	DESCRIPTION	KEY QTY	DESCRIPTION
1	5 Caster	7	1 Backrest Post	14	2 Arm Width Adjustment Knob + Washers
2	1 Base	8	1 Backrest Screw	15	1 Back Post Bellow
3	1 Seat Post	9	1 Seat	16	2 Back Post Bellow Screw
4	1 Seat Post Cover	10	1 Mechanism	17	3 Mechanism Bracket Screw + Washer
5	1 Footring + Height Adj. Knob	11	4 Mechanism Screw	18	1 Allen Wrench
6	1 Backrest	12	2 Armrest Bracket		
		13	2 Armrest		

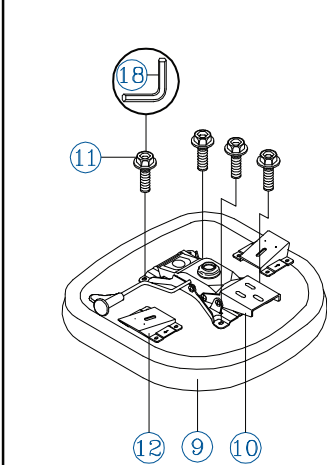
STEP 1.



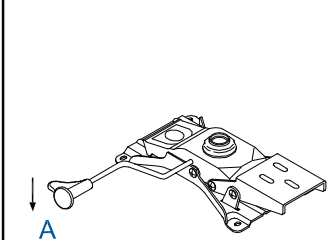
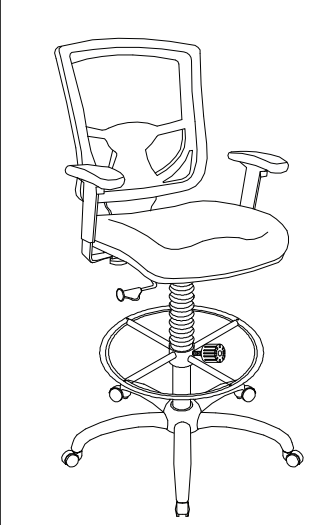
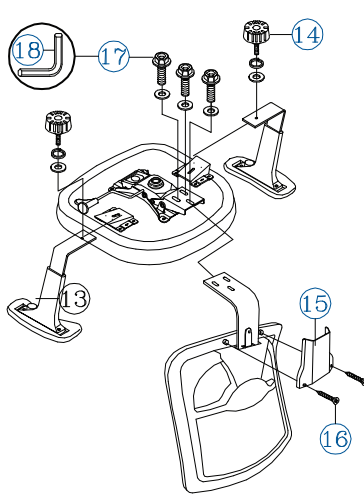
STEP 2.



STEP 3.



STEP 4.



MECHANISM OPERATING INSTRUCTION WHILE SEATING :

- (A) **SEAT HEIGHT ADJUSTMENT :**
Pull lever up and downward .
Release lever when desired position is reached.

PREVENTIVE MAINTENANCE AND WARNING!

- USE THIS PRODUCT ONLY FOR SEATING ONE PERSON AT A TIME.
- DO NOT USE THIS CHAIR AS A STEP STOOL / LADDER.
- DO NOT SIT ON ANY PART OF THE CHAIR EXCEPT THE SEAT.
- DO NOT USE CHAIR ON UNEVEN FLOOR SURFACES.
- DO NOT USE CHAIR UNLESS ALL BOLTS, SCREWS AND KNOBS ARE TIGHTENED.
- EVERY SIX MONTHS, PLEASE MAKE SURE ALL BOLTS, SCREWS AND KNOBS ARE FULLY TIGHTENED TO ENSURE STABILITY.
- IF ANY PARTS ARE MISSING, BROKEN, DAMAGED OR WORN, STOP USE OF THE PRODUCT UNTIL REPAIRS ARE MADE USING FACTORY AUTHORIZED PARTS.
- DISPOSE OF PACKAGING PROPERLY. PLASTIC BAG IS NOT A TOY. DO NOT USE PLASTIC BAG AS HEAD COVERING - IT MAY CAUSE SUFFOCATION.
- FAILURE TO FOLLOW THESE WARNINGS COULD RESULT IN SERIOUS INJURY.
- NOTE: SOME SCREWS MAY BE PREASSEMBLED. IF PREASSEMBLED, IGNORE ASSEMBLY INSTRUCTIONS.