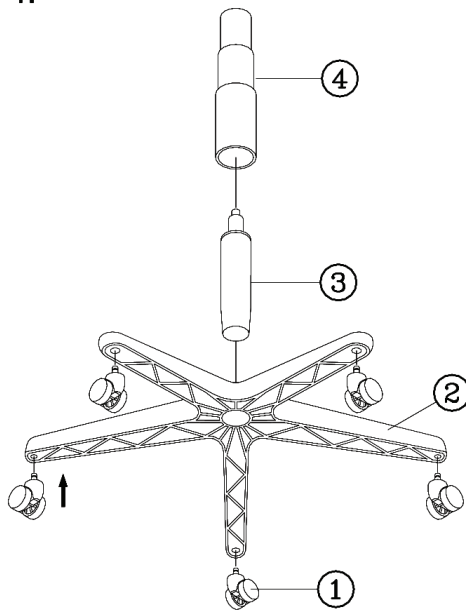


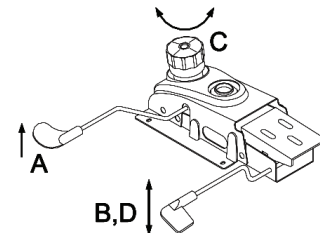
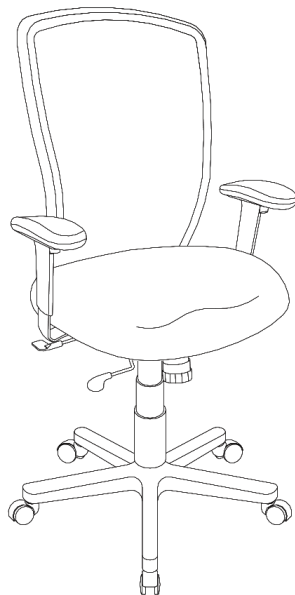
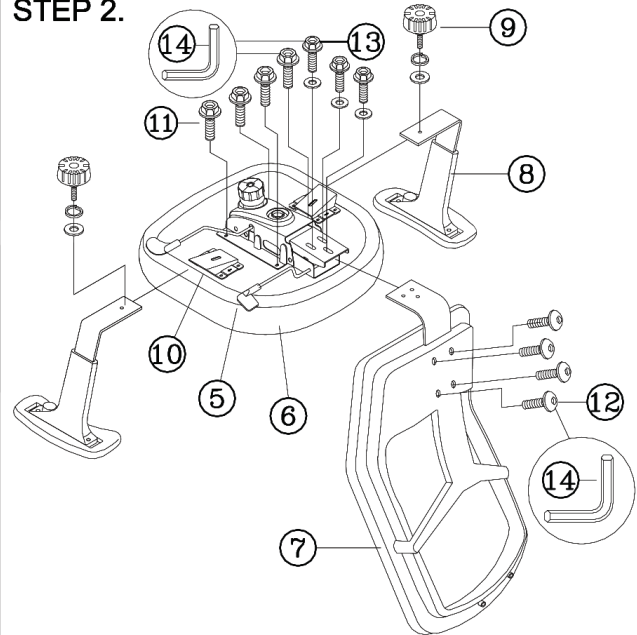
PART LIST REMOVE ALL ITEMS FROM THE CARTON. VERIFY ALL PIECES BEFORE ASSEMBLY.

KEY QTY DESCRIPTION	KEY QTY DESCRIPTION	KEY QTY DESCRIPTION
1 5 Caster	7 1 Backrest	12 4 Backrest Tight Screw
2 1 Base	8 2 Armrest	13 3 Backrest Tight Screw +Washer
3 1 Seat Post Cover	9 2 Arm Width Adjustment Knob + Washers	14 1 M5 Size Allen Wrench
4 1 Seat Post	10 2 Arm Bracket	
5 1 Mechanism	11 4 Mechanism Screw	
6 1 Seat		

STEP 1.



STEP 2.



MECHANISM INSTRUCTIONS :

- (A) SEAT HEIGHT ADJUSTMENT :
Pull lever up and downward. Release lever when desired position is reached.
- (B) BACK TILT ADJUSTMENT :
Turn the lever up, move backrest to tilt. To lock in position, turn lever down.
- (C) TILT TENSION ADJUSTMENT KNOB :
Rotate knob clockwise / counterclockwise to adjust tilt tension based on body weight.
- (D) TILT LOCK
Lock and release switch of synchronized tilt with 3-position stop.

PREVENTIVE MAINTENANCE AND WARNING!

- USE THIS PRODUCT ONLY FOR SEATING ONE PERSON AT A TIME.
- DO NOT USE THIS CHAIR AS A STEP STOOL / LADDER.
- DO NOT SIT ON ANY PART OF THE CHAIR EXCEPT THE SEAT.
- DO NOT USE CHAIR ON UNEVEN FLOOR SURFACES.
- DO NOT USE CHAIR UNLESS ALL BOLTS, SCREWS AND KNOBS ARE TIGHTENED
- EVERY SIX MONTHS, PLEASE MAKE SURE ALL BOLTS, SCREWS AND KNOBS ARE FULLY TIGHTENED TO ENSURE STABILITY.

- IF ANY PARTS ARE MISSING, BROKEN, DAMAGED OR WORN, STOP USE OF THE PRODUCT UNTIL REPAIRS ARE MADE USING FACTORY AUTHORIZED PARTS.
- DISPOSE OF PACKAGING PROPERLY. PLASTIC BAG IS NOT A TOY. DO NOT USE PLASTIC BAG AS HEAD COVERING - IT MAY CAUSE SUFFOCATION.
- FAILURE TO FOLLOW THESE WARNINGS COULD RESULT IN SERIOUS INJURY.
- NOTE: SOME SCREWS MAY BE PREASSEMBLED. IF PREASSEMBLED, IGNORE ASSEMBLY INSTRUCTIONS.