

Before assembly, please remove all parts from the carton, verifying that you have the correct quantities, and read all the instructions.

**IN THE CARTON:**

**HARDWARE**

1  Cam Lock 14 Pcs	2  Klix Cam 14 Pcs	3  Housing Cap (Short) 14 Pcs	4  Screw #3.5 x 32mm 3 Pcs	5  Adjustable Glide 6 Pcs	6  M4 x 65 Allen-Key 1 Pc	7  Shelf Support Pin Small 6 Pcs	8  Shelf Support Pin Big 2 Pcs	9  Castor Without Stoper 2 Pcs	10  Castor With Stoper 2 Pcs	11  Screw #3.5 x 16mm 16 Pcs
-----------------------------	-----------------------------	----------------------------------------	----------------------------------------	---------------------------------------	---------------------------------------	----------------------------------------------	--------------------------------------------	--------------------------------------------	------------------------------------------	------------------------------------------

**COMPONENTS**

A  Side Panel LEFT	B  Side Panel RIGHT	C  Back Panel	D  Bottom Panel	E  Fixed Shelf Panel	F  Adjust Shelf Panel	G  Top Shelf Panel	H  Front Rail
--------------------------	---------------------------	---------------------	-----------------------	----------------------------	-----------------------------	--------------------------	---------------------

**KLIX CAM INSTRUCTIONS**

**1**

Line up Cam Lock,  
turn clockwise.

**2**

Insert the cam with the arrow  
pointing towards the hole in the  
edge.

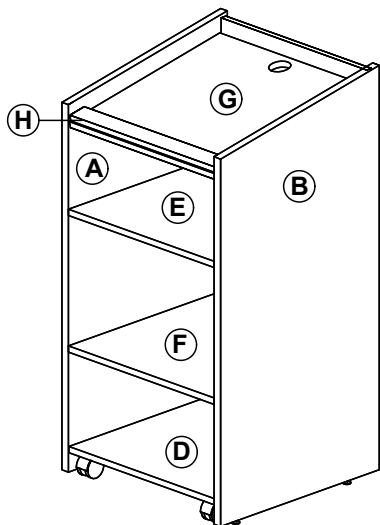
**3**

Insert the Cam Lock into Klix  
Cam. Turn Klix Cam to lock.

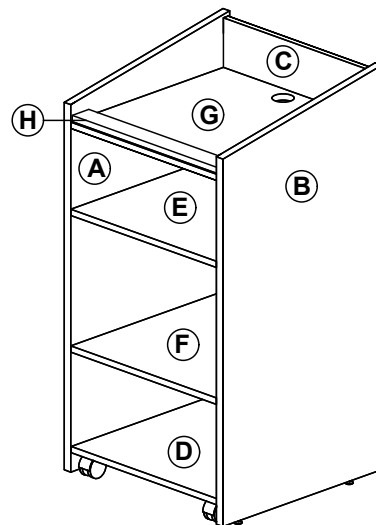
**HINGES INSTRUCTIONS**

**DETAIL x-x**

BACK VIEW  
ADJUST THIS SCREW FOR DOOR ALIGNMENT  
AFTER ASSEMBLY THE HINGES.



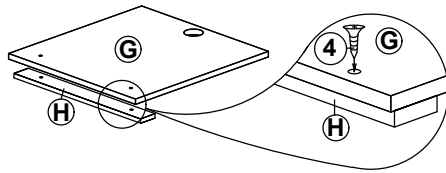
**OPTION 1**



**OPTION 2**

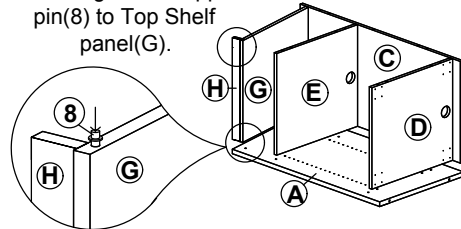
**INSTRUCTIONS:**

**1**



Assemble Front Rail(H) to Top Shelf(G) with Screw (4).

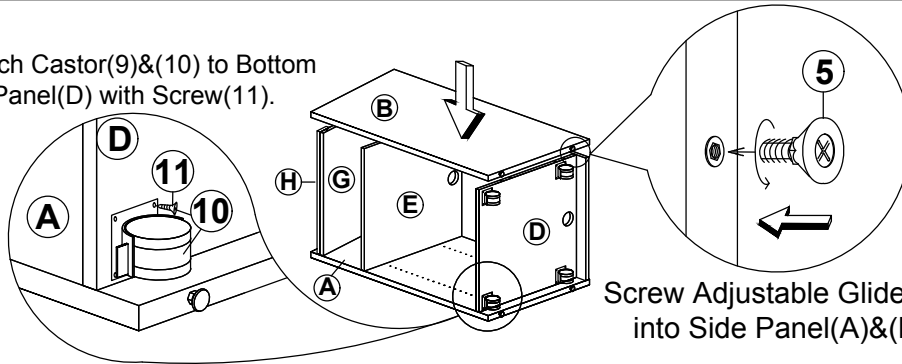
**2** Attach Big Shelf Support pin(8) to Top Shelf panel(G).



Assemble Fixed Shelf(E), Bottom Panels(D), Back Panel(C) & Top Adjust Shelf(G) to Side Panels Left(A) with Cam Lock (1) and Klix Cam (2).

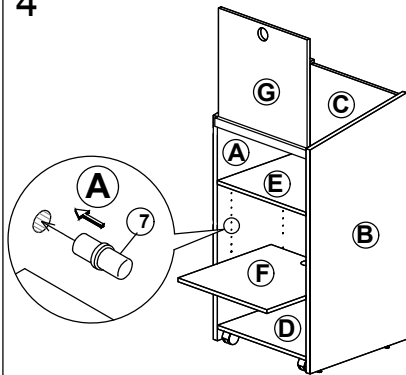
**3**

Attach Castor(9)&(10) to Bottom Panel(D) with Screw(11).



Screw Adjustable Glides (5) into Side Panel(A)&(B).

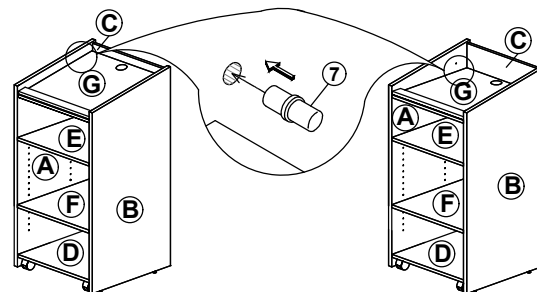
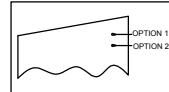
**4**



Insert Adjustable Shelf(F) into Lectern & Support with Shelf Support Pin(7).

**5**

Attach Shelf Support Pin(7) to Side Panel Left & Right(A)&(B) with optional position shown.



OPTION 1

OPTION 2

2 of 2.

**⚠ ATTENTION ⚠**

Place all wooden parts on a clean, smooth surface to prevent them from being scratched. Check to be sure that you have all parts and hardware. Remove all wrapping materials, including staples and packing straps before you start to assemble. Do not tighten all screws/bolts until all completely assembled. Keep all hardware parts out of reach of children. If any parts are missing, broken, damaged or worn, stop use of product until repairs have been made using factory authorized parts. Failure to follow these warnings may result in injury.