

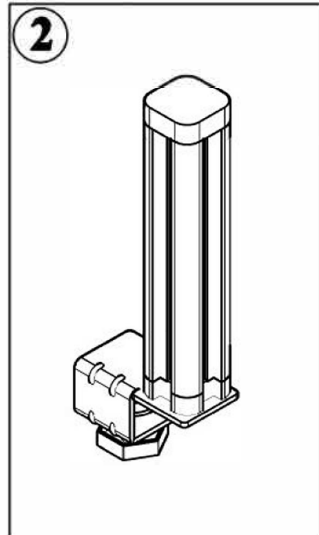
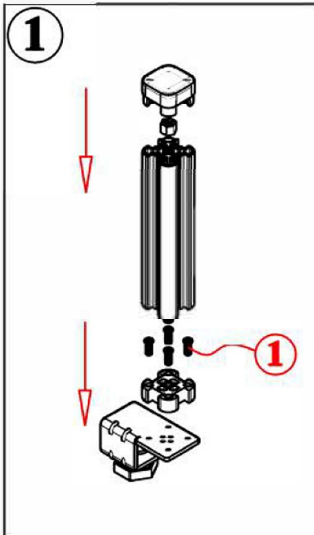
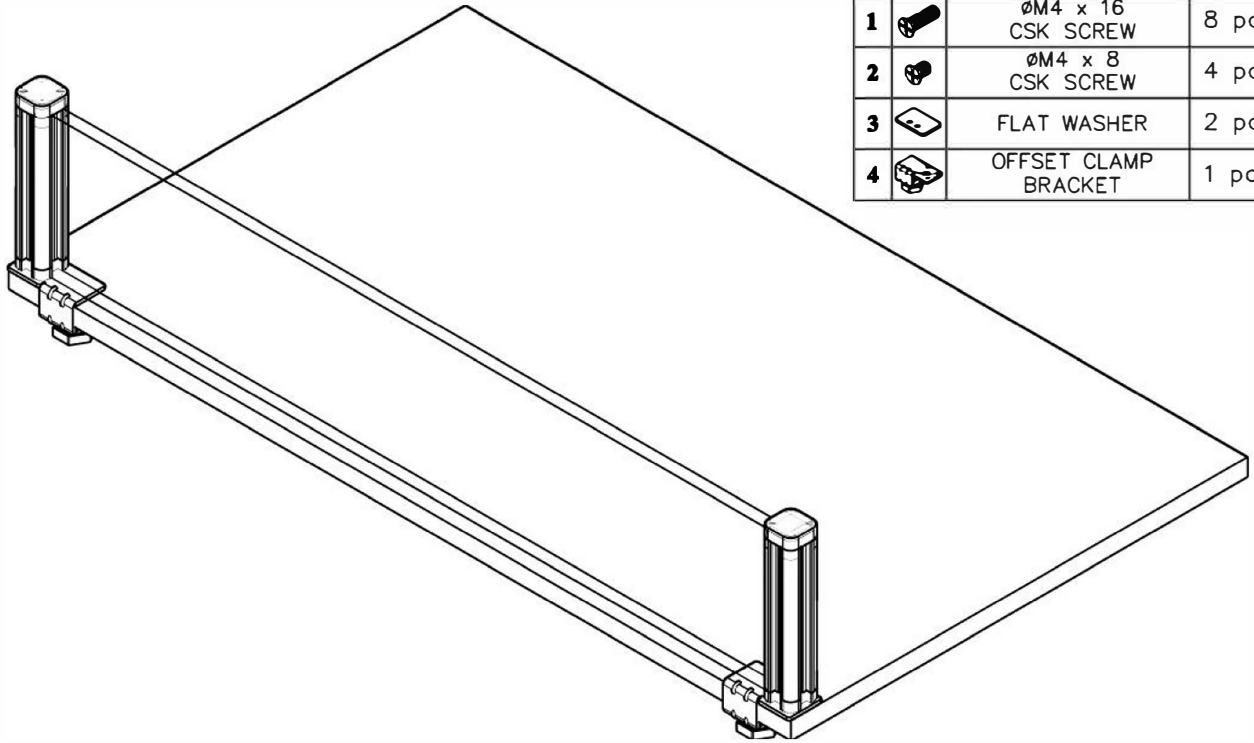
Before assembly, please remove all parts from the carton, verifying that you have the correct quantities, and read all the instructions.

INSTRUCTIONS:

IN THE CARTON:

Parts List

1		∅M4 x 16 CSK SCREW	8 pcs
2		∅M4 x 8 CSK SCREW	4 pcs
3		FLAT WASHER	2 pcs
4		OFFSET CLAMP BRACKET	1 pair



1. Attach and screw in all the parts as shown in step 1.
2. Place the Post Clamp in between the table top and lock them with the tightener screw,
3. Remove the top plastic cap, slot in the panel into the aluminium profile and close it back once the panel are in place.

INSTRUCTIONS:

