



OfficeSource®
FURNITURE

MERAK



Last Updated: 11/9/2023

[HIGH BACK CHAIR]

Multi-Position Back Lock



27"W Chrome Base
For Added Stability On All Chairs

FORM & FUNCTION

These attractive chairs combine form and function in a clean, contemporary design. The adjustable height, PU leather upholstery, chrome armrests, 360-degree swivel, and five-point chrome rolling base casters add to its features,making it a fit for any office situation.



#1501VWH

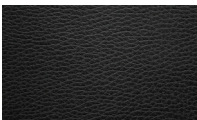


Fixed Chrome Arms
w/Padded Armrests

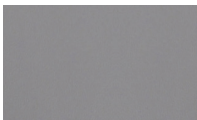


Adjustable Tilt Tension
With Lock Controls

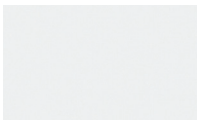
Upholsteries In Stock:



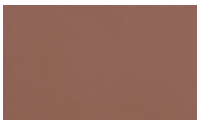
BK Black
PU Leather



GR Gray
PU Leather



WH White
PU Leather



CA Caramel
PU Leather



[MID BACK CHAIR]



#1505VBK



#1505VGR

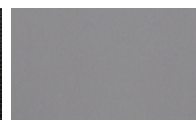


#1505VWH

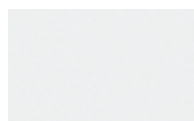
Upholsteries In Stock:



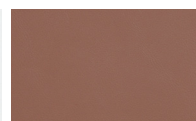
BK Black
PU Leather



GR Gray
PU Leather



WH White
PU Leather



CA Caramel
PU Leather



CONTEMPORARY & SLEEK

It is a common experience to find an uncomfortable visitor's chair as you visit many commercial settings. To solve this universal problem, this executive sled base guest chair from OfficeSource® was created. This particular guest chair is designed to be the ideal piece of office furniture. Impress your guests with this high quality, well supported, extremely comfortable, and sturdy chair. Not only will each of the four upholstery color options add a touch of style to your office place, this chair will also provide a high level of comfort to your visitors.



#1509VBK

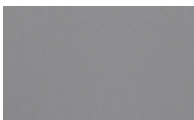


#1509VGR

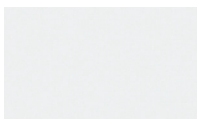
Upholsteries In Stock:



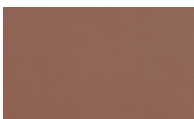
BK Black
PU Leather



GR Gray
PU Leather



WH White
PU Leather



CA Caramel
PU Leather



#1509VCA

[GUEST CHAIR]



OfficeSource®
FURNITURE

