



## FACTORY SHOALS Pedestrian Bridge Study



# Public Meeting #1

August 27, 2024

# Project Team Introductions



# Agenda

- Study Overview
  - Initial Findings
- Public Engagement
- Next Steps

# Study Overview

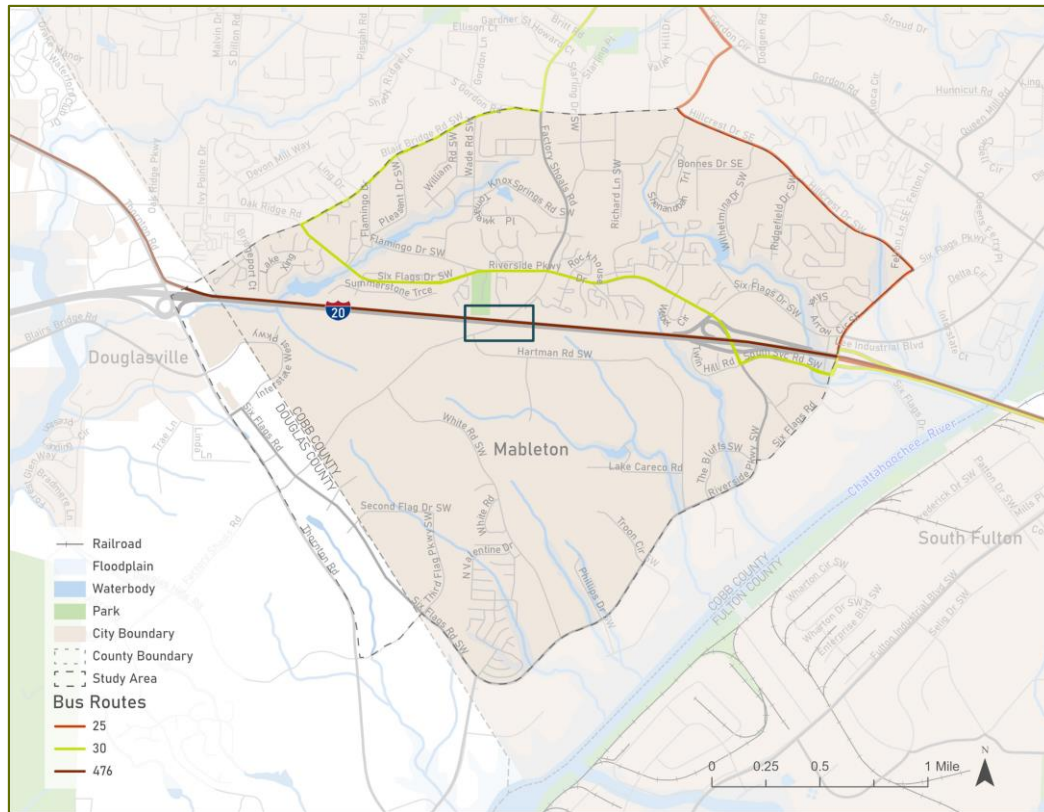
Existing Conditions and Needs Assessment

Environmental Screening

Alternative Analysis

Preferred Concept

Grant Writing





# FACTORY SHOALS

## Pedestrian Bridge Study

### Initial Findings



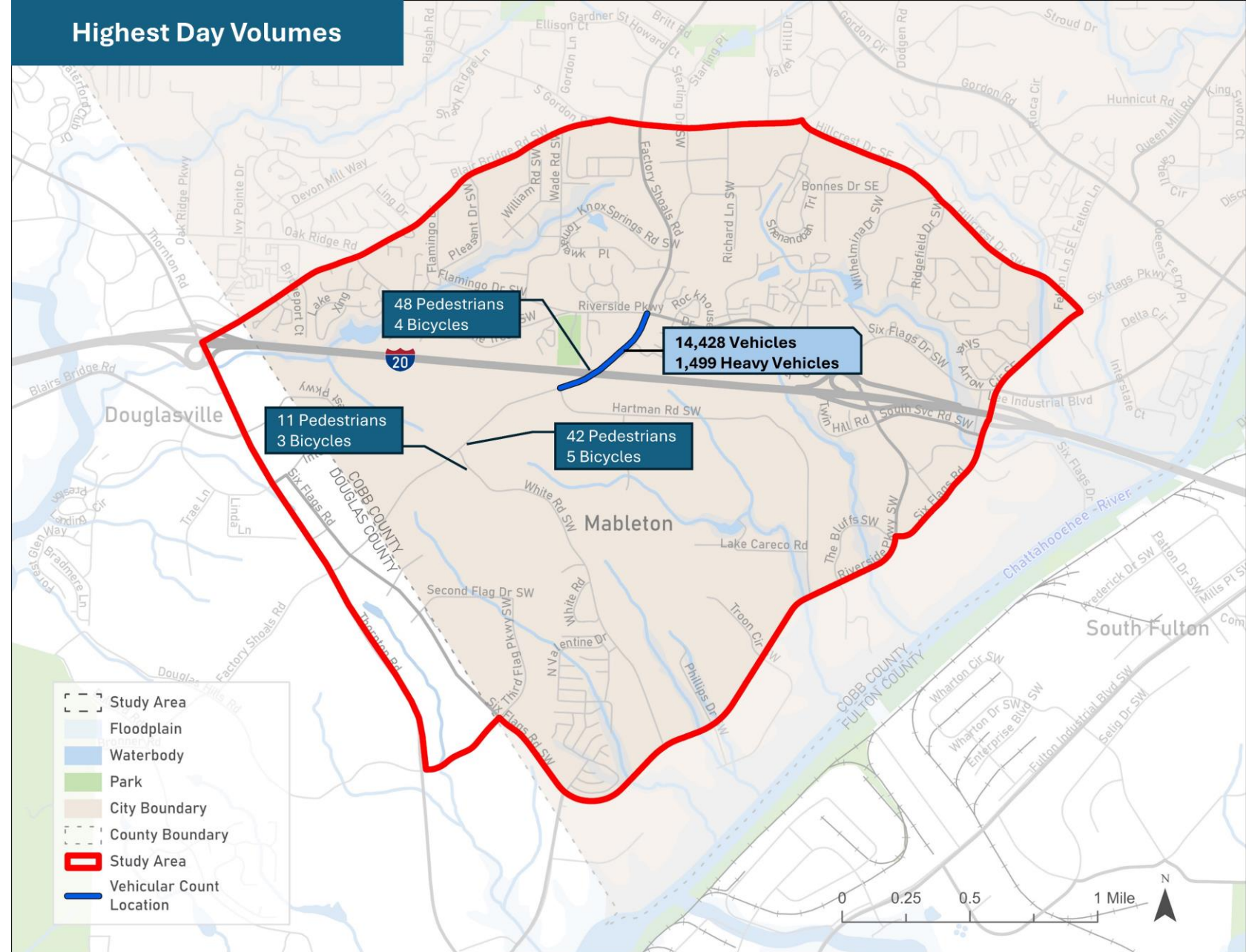
# Bridge Condition

- Bridge is over 60 years old – starting end of life cycle
- Widening is not recommended due to age
- Current condition does not meet GDOT bridge railing or transition standards
- No sidewalks
- Curb width 1.9 feet – being used as sidewalk
- Not a designated Freight Route but has ~1500 trucks crossing per day

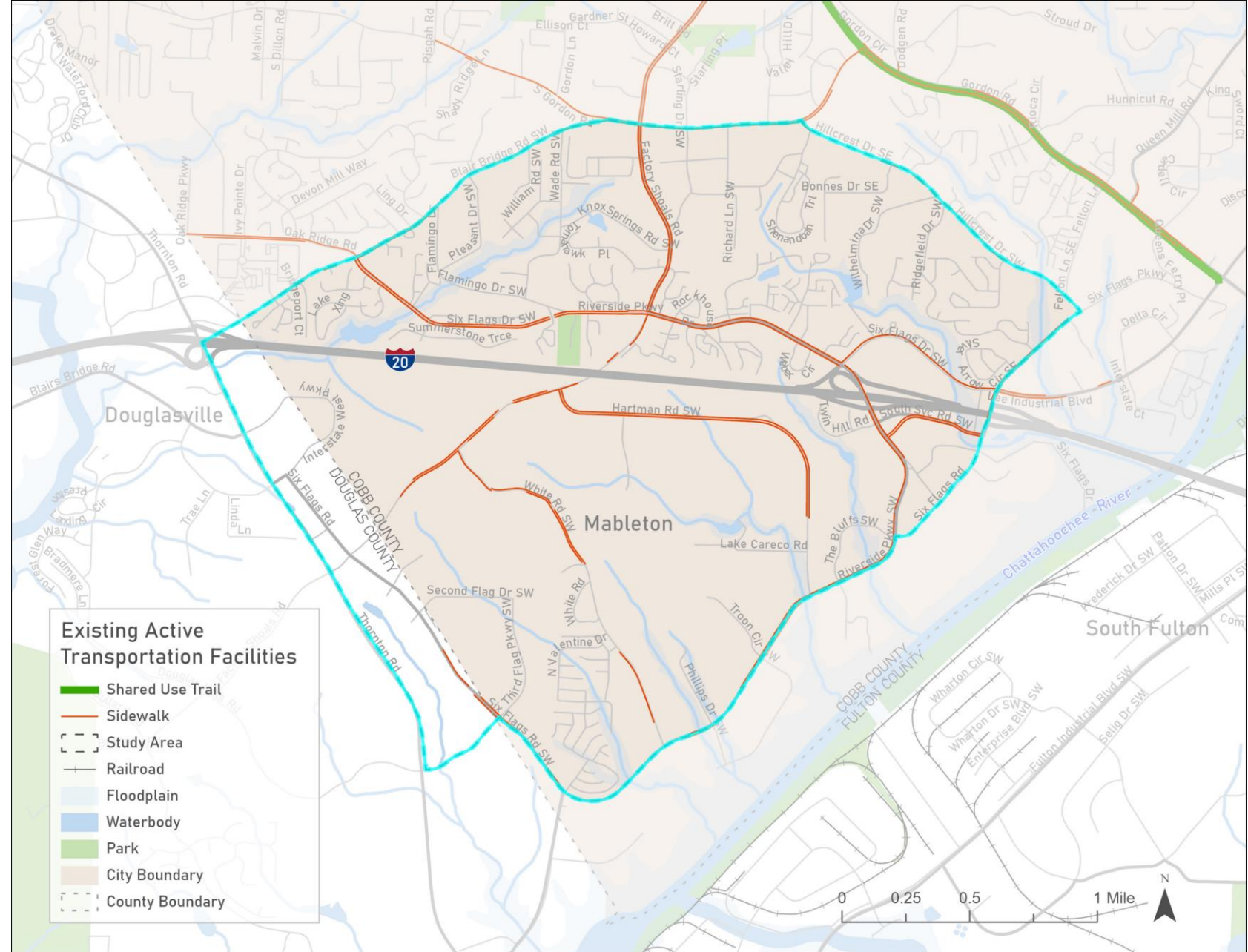




# Traffic Conditions

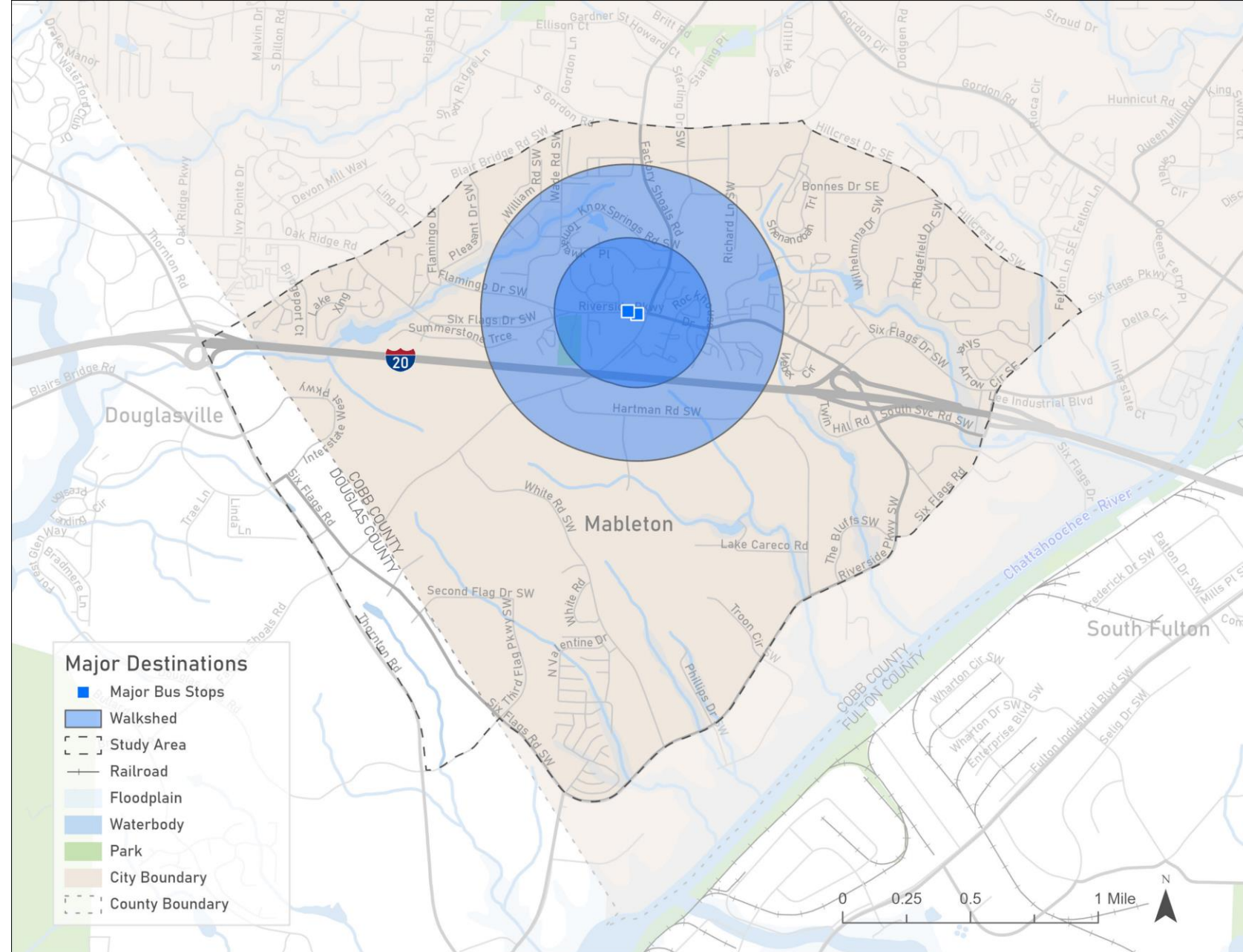


# Active Transportation Facilities





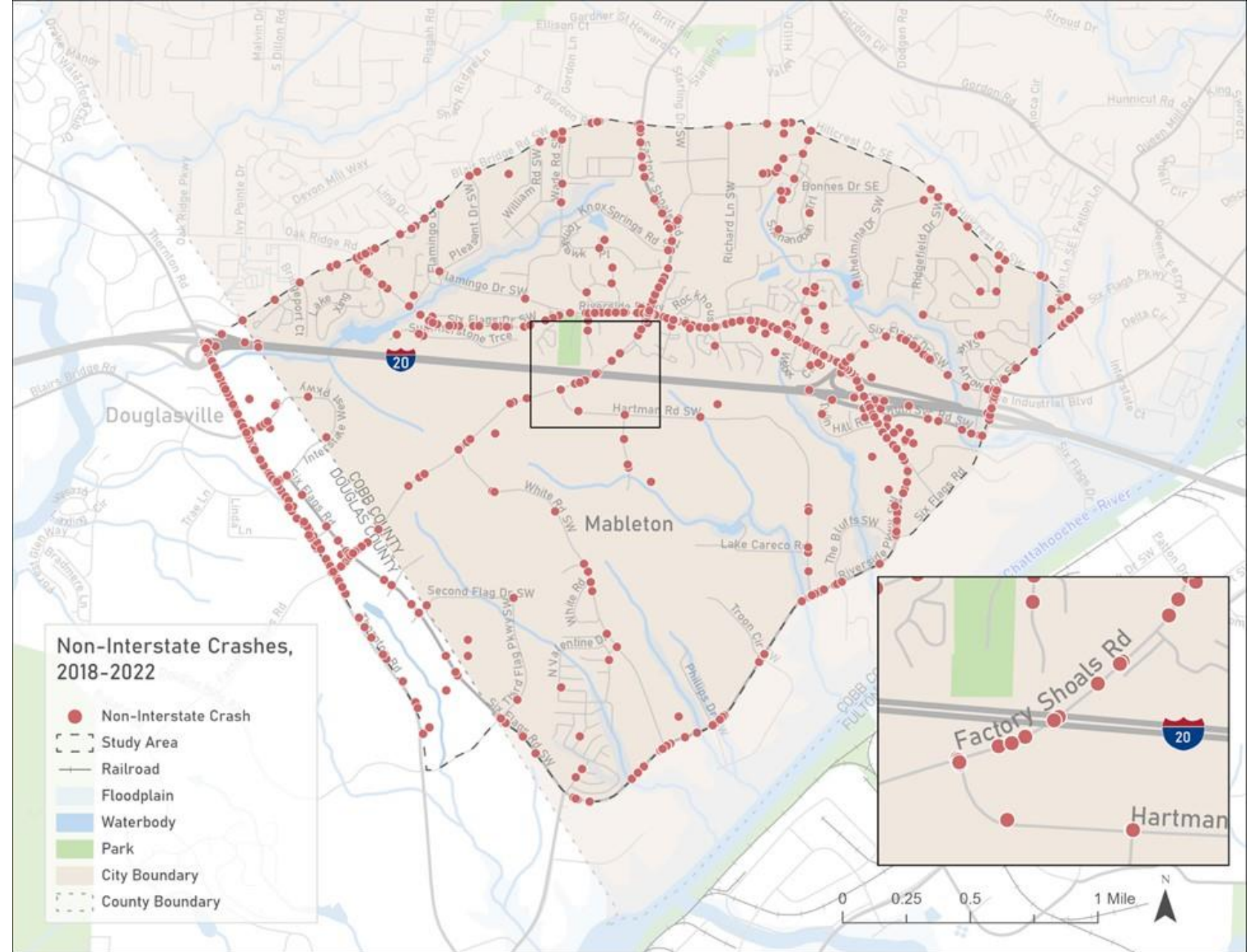
# Walkshed from Transit



.25 (~15 minute walk) and .5 miles (~30 minute walk) shown

Bridge is .33 miles from Riverside/Transit

# Crashes





# FACTORY SHOALS

## Pedestrian Bridge Study

### Public Engagement





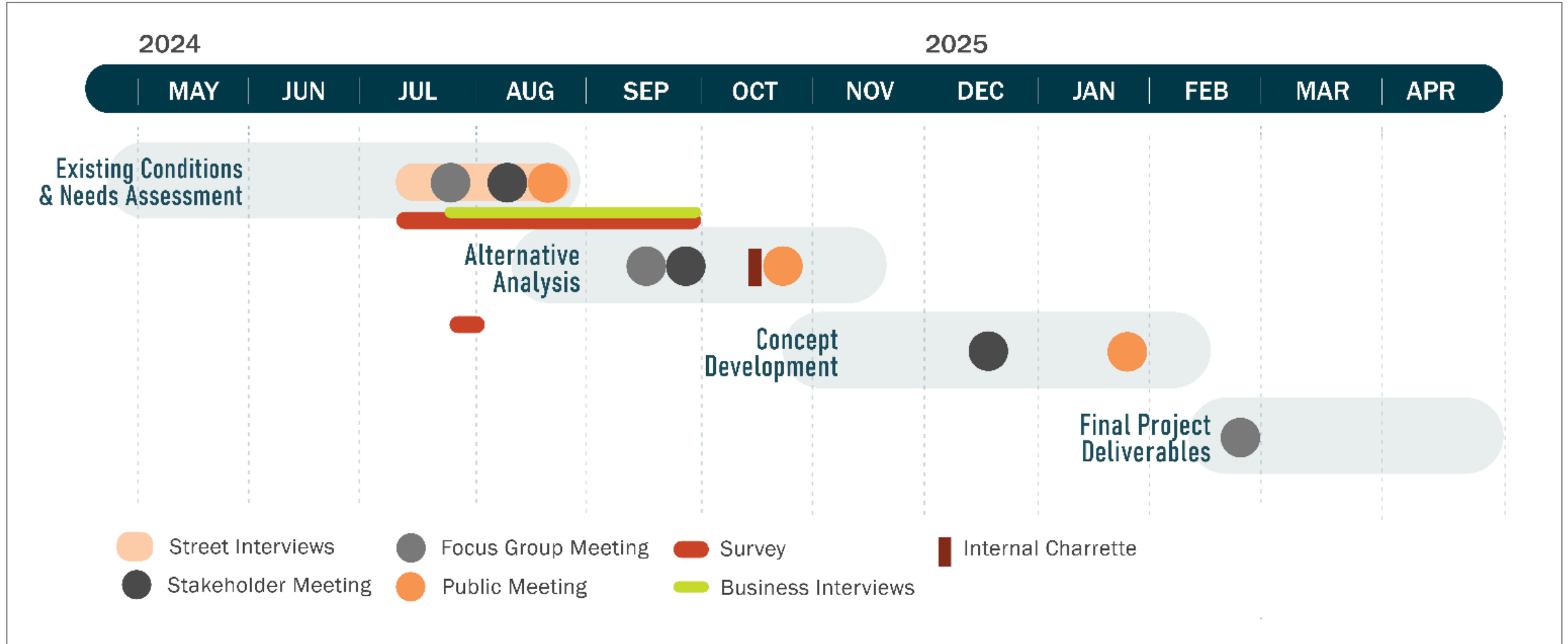
# Engagement Goals

- Build awareness about study goals, ways to participate, and anticipated outcomes
- Implement inclusive and accessible engagement activities
- Reach low-income, minority, disabled, and other disadvantaged stakeholders
- Gather input that demonstrates the need for, or lack thereof, a pedestrian bridge over I-20 on Factory Shoals Road





# Public Involvement Plan



# Stakeholder Group Meeting 1 Input

- Includes: Cobb County, regional partners, and area organization representatives
- Input highlights:
  - Importance of hearing from:
    - Residential population on Riverside Parkway
    - Employers in areas
    - Broader Mableton community
  - Importance of clearly communicating goals and purpose of study to residents
  - Opportunity to consider employer-led shuttles to safely transport people to and from jobs
  - High amount of tractor trailer traffic creates a dangerous route across the Factory Shoals Rd bridge
  - A historic lack of pedestrian infrastructure, while improving, still needs notable improvements

Meeting 1 (Aug. 12, 2024)

Meeting 2 (Sept. 2024)

Meeting 3 (Dec. 2024)

# Public Meetings

## Meeting 1 (August 27, 2025)

- Share study purpose, goals, and outcome.
- Collect community input regarding roadway safety needs

## Meeting 2 (October 2024)

- Share key findings from the existing conditions and initial survey results
- Discuss the proposed alternatives and collect feedback

## Meeting 3 (January 2025)

- Share the preferred improvement alternative(s) and recommendations
- Share preliminary concept drawings



## FACTORY SHOALS Pedestrian Bridge Study

Help Cobb County improve mobility and  
pedestrian safety along Factory Shoals Road!

Cobb County is conducting a focused study around Factory  
Shoals Road and I-20 to enhance mobility and pedestrian safety.



**WE WANT TO HEAR FROM YOU!**

Participate  
Now!

Complete our online  
survey to share your  
feedback.



Join Us for a Public Meeting

August 27, 5:00 – 7:00 PM

South Cobb Community Center  
620 Lions Club Dr. SW  
Mableton, GA 30126

More information: [www.cobbcounty.org/transportation/planning/roadway](http://www.cobbcounty.org/transportation/planning/roadway)

# Street Interviews (4 Rounds)

- Locations
  - North side of Factory Shoals Rd Bridge at I-20
  - South side of Factory Shoals Rd Bridge at I-20
  - CobbLinc bus stops at Riverside Pkwy near Factory Shoals Rd
- Observations
  - Mix of ages, ethnicities
  - Combination of bike riders, bus riders, + 1 skateboarder
  - People from apartment complex north of bridge are also crossing the bridge
- Input Collected
  - Concerns include unsafe conditions on bridge, lack of lighting, and lack of crosswalks,
  - Most people going to/from work when crossing I-20
  - Several high-speed freight trucks, buses, and cars traveling at high speeds along Factory Shoals





# Next Steps

- Complete Employer Interviews
- Complete Existing Conditions and Needs Assessment Report
- Begin Alternative Analysis (3)
- Stakeholder Meeting #2
- Public Meeting #2 – October 2024