



PROJECT ORIENTATION

Study Overview

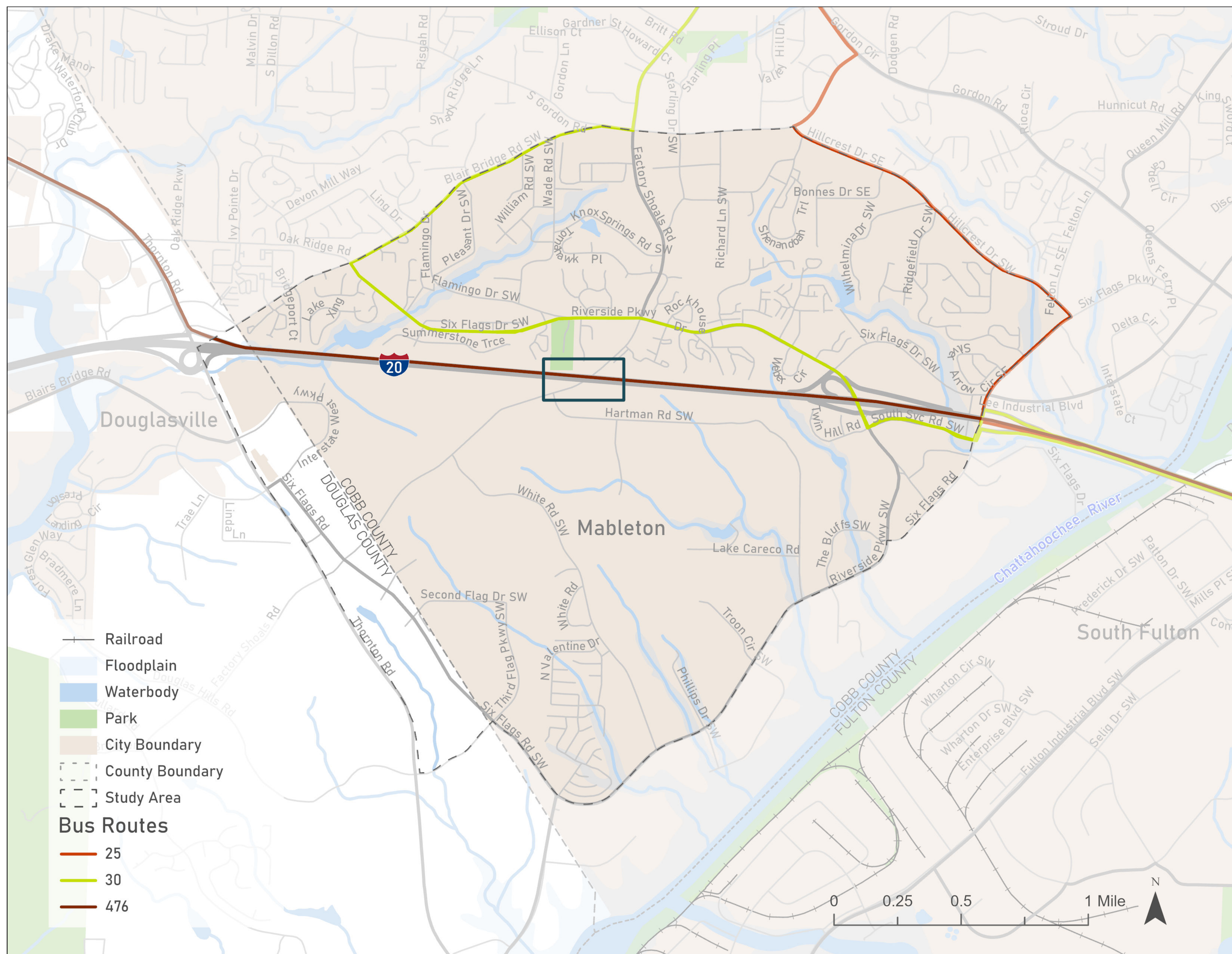
The Factory Shoals Pedestrian Bridge Study is evaluating the need to enhance mobility and pedestrian safety on the Factory Shoals Bridge over I-20. Every aspect of this study focuses on maximizing safety, connectivity, efficiency, and equitable transportation.

The planning effort will result in recommendations and a preferred plan of action for safer pedestrian conditions in the study area (see below for map) and a preliminary Cobb Concept Report. The study team is considering pedestrian connections over I-20 at Factory Shoals, transit implementation improvements, and other potential roadway safety improvements needed in the area. Recommended connections or improvements will improve travel for those who rely on walking and/or transit to reach their daily needs.

Input Activity

Share your relationship to the area.

- Where you live
- Where you work or attend school
- ★ Key roads you travel on. Add a dot to star if you are walking or biking.





PROJECT TIMELINE & ACTIVITIES

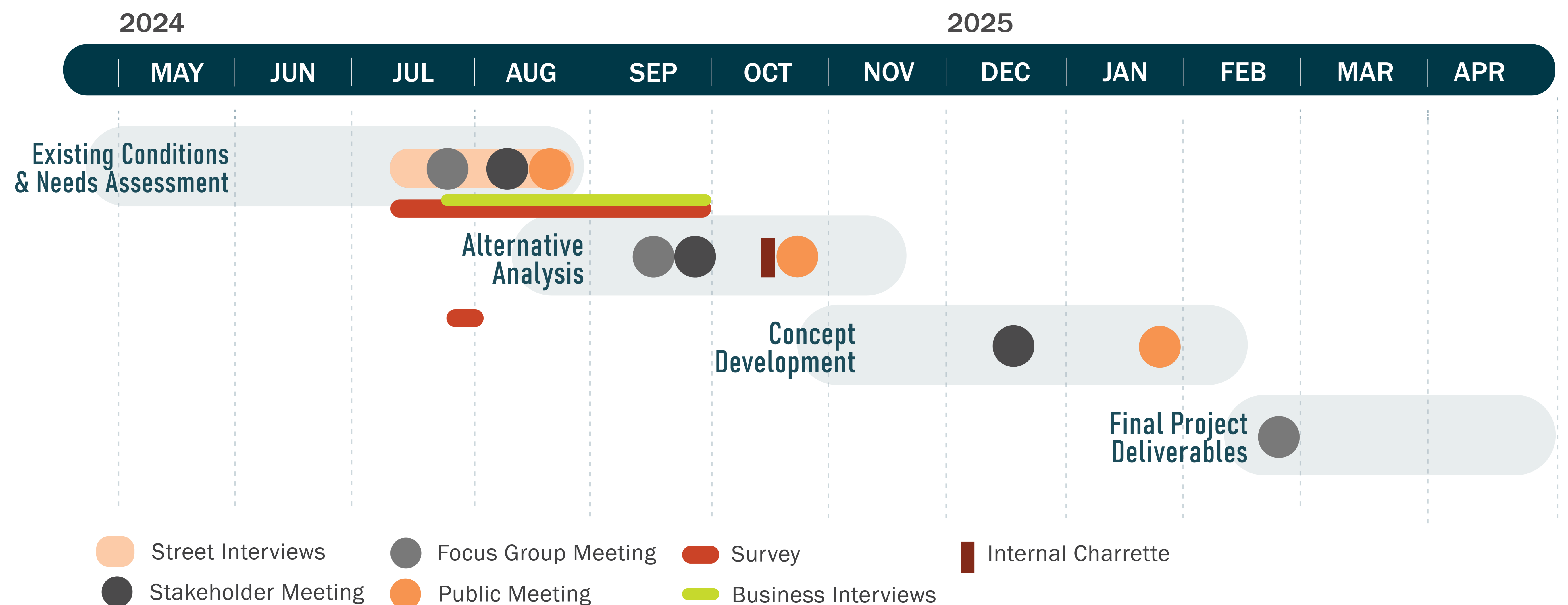
Schedule

Spring 2024 - Spring 2025

Public and stakeholder input opportunities will be woven into each phase. The planning effort will result in recommendations and a preferred plan of action for safer pedestrian conditions in the study area.

3 PHASES

1. EXISTING CONDITIONS & NEEDS ASSESSMENT REPORT
2. ALTERNATIVES ANALYSIS
3. RECOMMENDATIONS



We Need Your Input!

A major component of the study is collecting input from community members like you! It is crucial that we hear about your experiences in this area and how the County can help make travel easier and safer, particularly for those walking, biking, or taking transit.

Community Survey

Share your experiences traveling in the Factory Shoals area and concerns and suggestions to improve the connection and safety when crossing I-20! This survey will take roughly 5-10 minutes of your time.

Public Meeting #1

The first public meeting will share information about the study process and goals. We will collect input from community members' experiences traveling in the study area, including potential safety and connectivity improvements, with a special focus on walking, traveling by bus, and bike.

Public Meeting #2

This meeting will take place during the review of the alternatives analysis and share key findings from the existing conditions and initial survey results, as well as discuss proposed alternatives and collect feedback.

Public Meeting #3

This meeting will take place during the review of the preliminary concept development for the alternatives. It will focus on sharing the preferred alternative and preliminary concept report.

Stakeholder Engagement

A group of community leaders are meeting three times to provide information and feedback to inform the study. The study team will be holding focused discussions and interviews with unique groups within the study area, including industrial area businesses and users with a special relationship to the area.



Participate Now!

Complete our online survey to share your feedback.



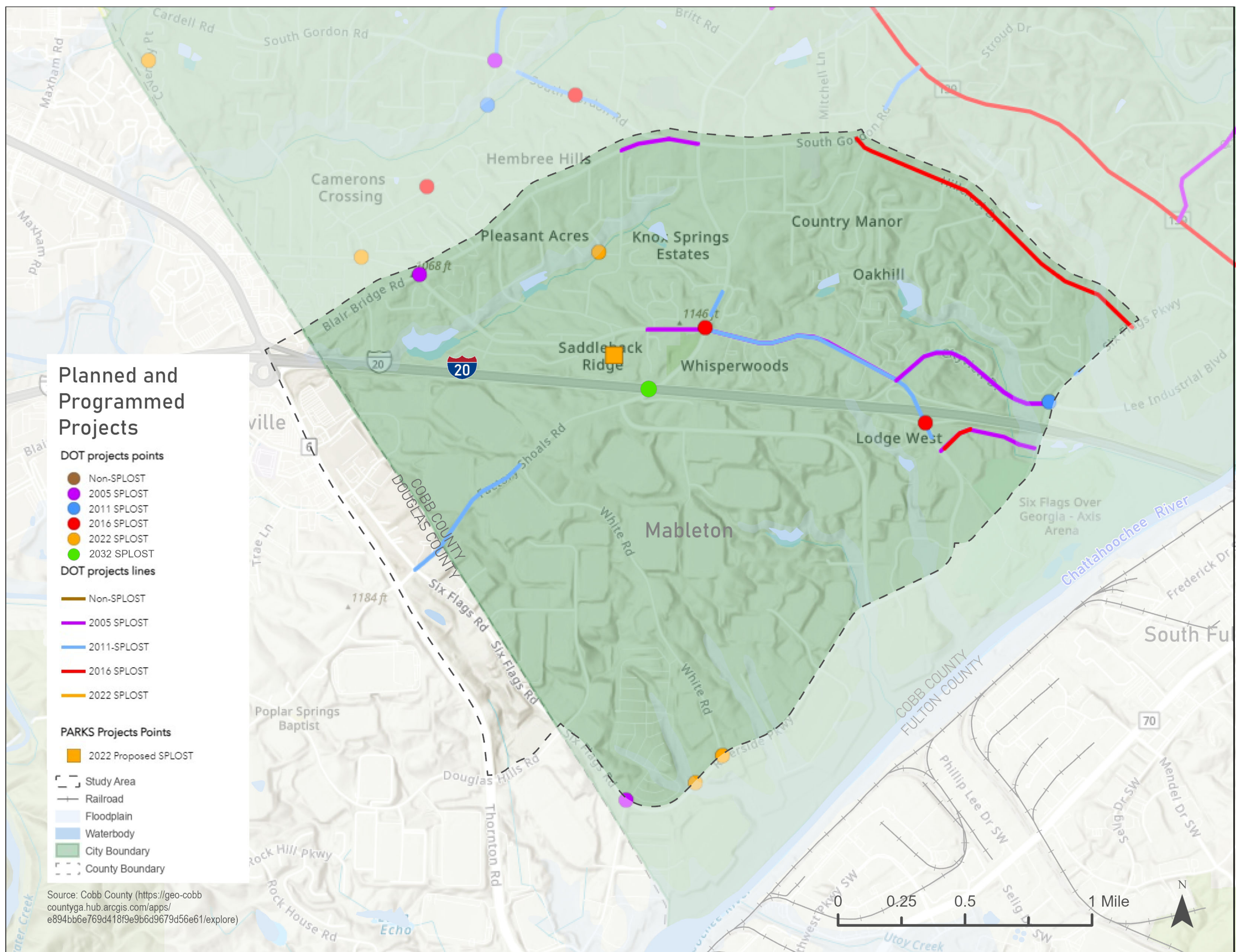


EXISTING CONDITIONS

Planned and Programmed Projects

The Planned and Programmed Projects map shows ongoing Cobb County projects throughout the study area.

Most of these are Department of Transportation projects and are included in the Special Purpose Local Option Sales Tax (SPLOST). Within the project study area, there are ongoing projects from the 2005, 2011, 2016, and 2022 SPLOST. This includes projects along and near Factory Shoals Road, including sidewalk improvements on Factory Shoals Road and Riverside Parkway, intersection improvements, and safety and operation improvements on Riverside Road and further south along Factory Shoals Road.





EXISTING CONDITIONS

Crashes

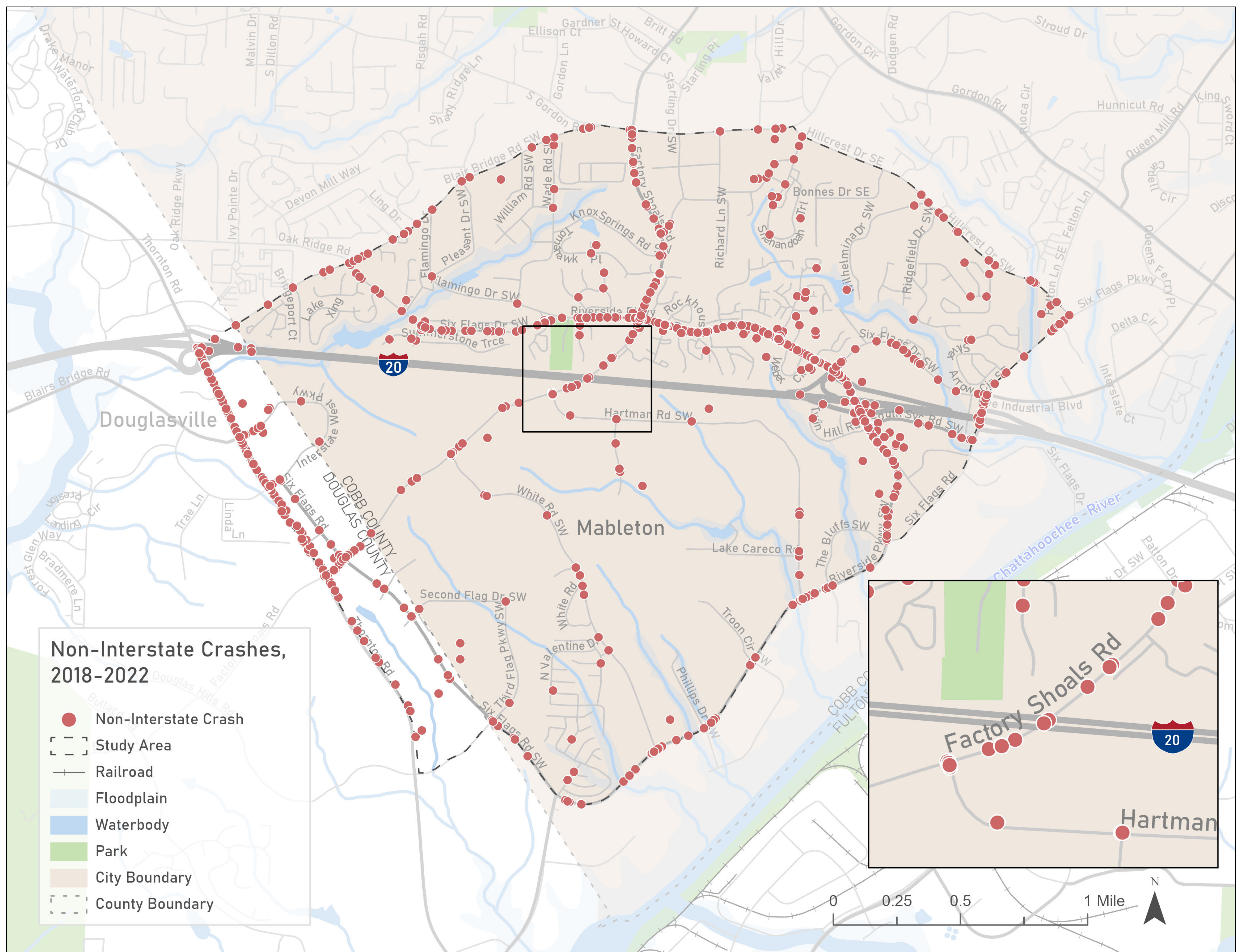
Assessing crash history within the study area is important for understanding safety in the area, especially of those travelling along Factory Shoals Road.

This map shows crashes that have occurred in the study area, excluding interstate crashes, between 2018 – 2022 and highlights crashes on the Factory Shoals Road bridge over I-20. During this time period there were 23 crashes in this specific area along Factory Shoals Road. While none of the crashes in this specific area resulted in a fatality or serious injury, one crash did involve a pedestrian.

Input Activity

Have you experienced a crash or close call in the study area?

Tell us about your experience on a comment form, or share your experience with a facilitator.



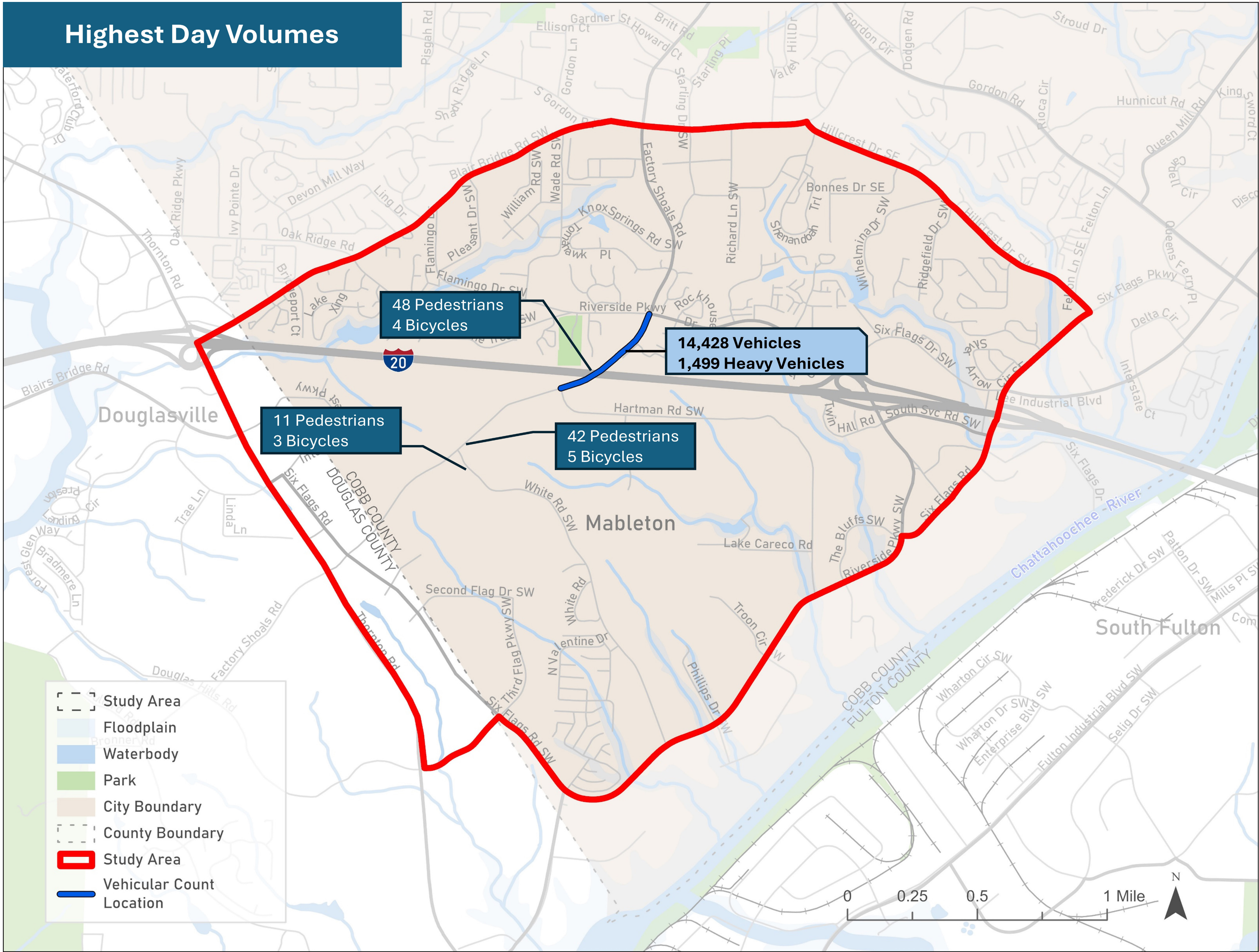


EXISTING CONDITIONS

Traffic Conditions

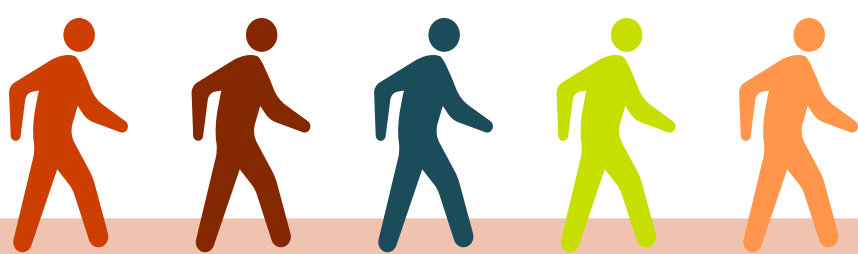
Key Takeaways

- Factory Shoals Road experiences mixed traffic with pedestrians/bicyclists and heavy vehicles.
- The majority of foot traffic is along the Factory Shoals Road bridge, between the bus stops and warehouses, and back.
- Bob White Road has low pedestrian volumes.
- There is no other opportunity to cross I-20 within reasonable walking distance.
- There are no pedestrian crossings between bus stop and Thorton Road.



Volumes

Location	Day	Period	Volume				
			Vehicular	Heavy Vehicle	Active Mode		
					Total	Pedestrian	Bicycle
Factory Shoals Rd, south of Riverside Pkwy	Thursday	24-HR	14,428	1,499	-	-	-
Factory Shoals Rd, south of Riverside Pkwy	Saturday	24-HR	8,402	535	-	-	-
Factory Shoals Rd, at I-20 Overpass Bridge	Thursday	16-HR	-	-	43	37	6
Factory Shoals Rd, at I-20 Overpass Bridge	Friday	16-HR	-	-	52	48	4
Factory Shoals Rd, at I-20 Overpass Bridge	Saturday	16-HR	-	-	20	19	1
Factory Shoals Rd, north of Bob White Rd	Thursday	16-HR	-	-	42	37	5
Factory Shoals Rd, north of Bob White Rd	Friday	16-HR	-	-	39	35	4
Factory Shoals Rd, north of Bob White Rd	Saturday	16-HR	-	-	19	17	2
Bob White Rd, east of Factory Shoals Rd	Thursday	16-HR	-	-	6	6	0
Bob White Rd, east of Factory Shoals Rd	Friday	16-HR	-	-	14	11	3
Bob White Rd, east of Factory Shoals Rd	Saturday	16-HR	-	-	7	7	0







EXISTING CONDITIONS

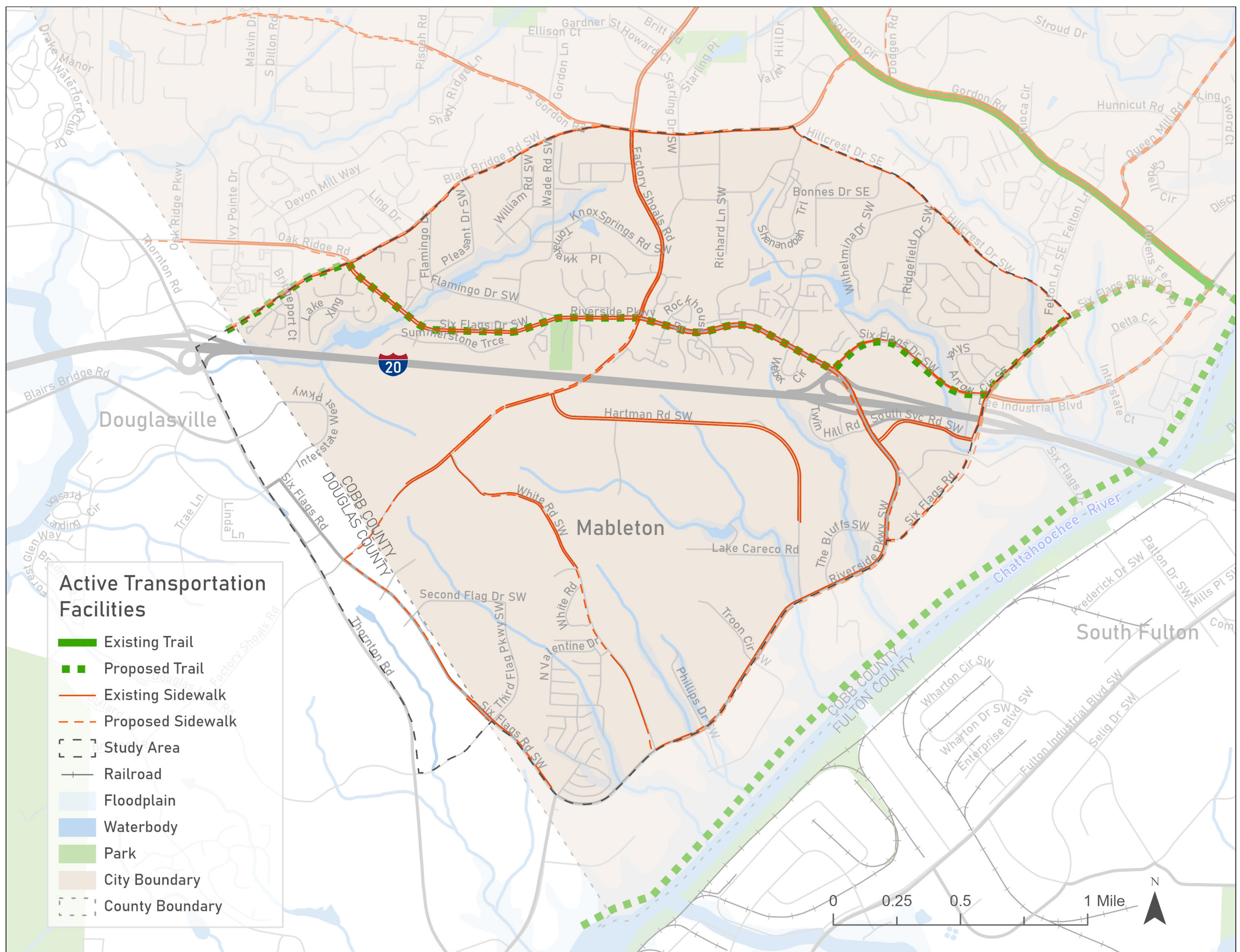
Active Transportation Network

This map shows existing and planned active transportation facilities throughout the study area, including sidewalk facilities. Sidewalks exist along many segments of the larger roadways throughout the study area. Along Factory Shoals Road, sidewalks exist north of Riverside Parkway and in segments south of I-20. There are no sidewalk facilities along the Factory Shoals Road bridge. Additionally, a trail facility is proposed along Riverside Parkway and Six Flags Drive SW, which will create a safe east-west pedestrian connection to Factory Shoals Road.

Input Activity

Tell us where sidewalk improvements are needed.

-  Add dots to map to indicate specific locations.
-  Use sticky notes to provide comments.





EXISTING CONDITIONS

Lighting

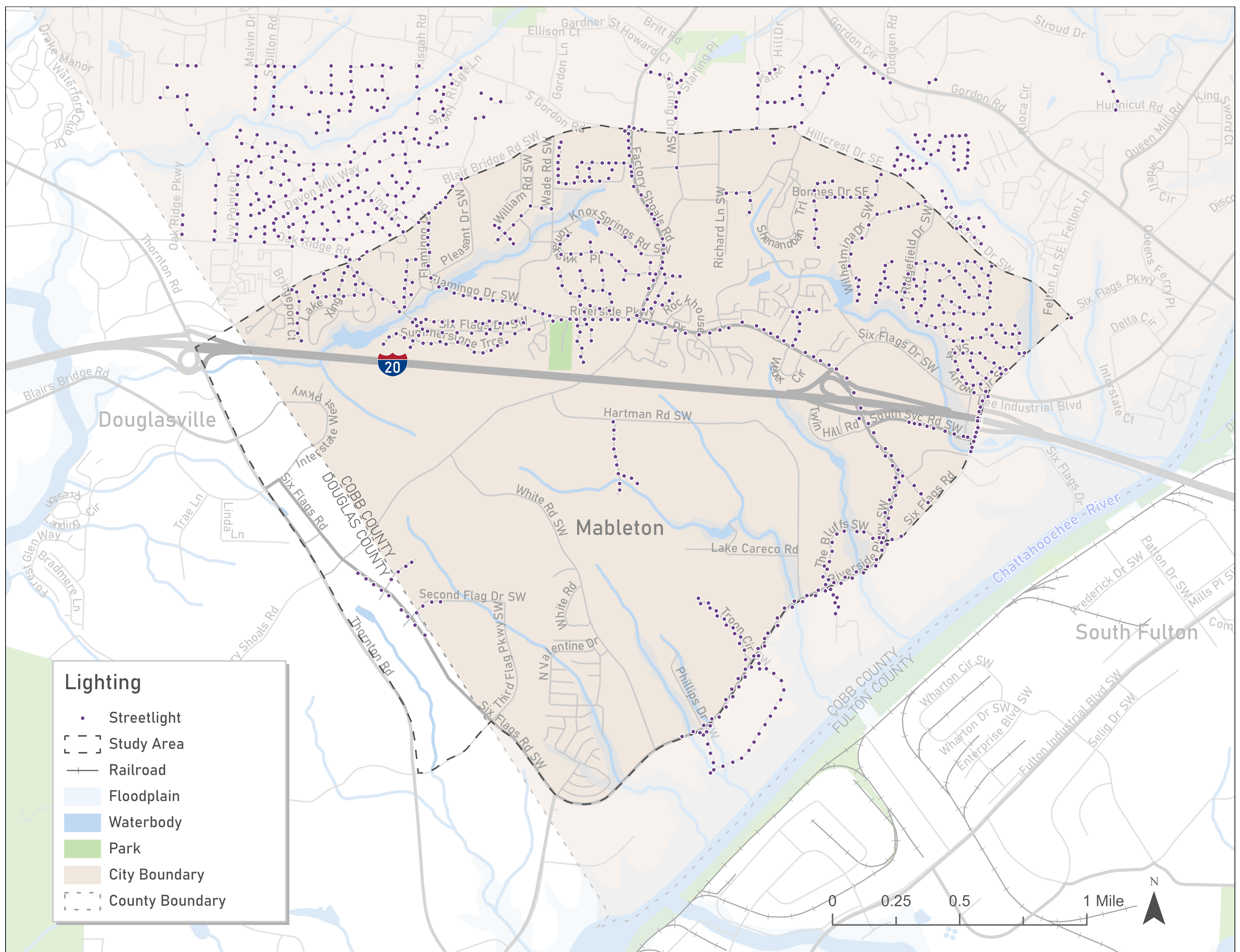
Lighting along roadways is important for safety of roadway users at night. This can be especially important for pedestrians and bicyclists that may be more difficult to see on the roadway.

This map shows the location of street lights throughout the study area to provide a picture of roads that may be more dangerous at night due low visibility. While many roads north of I-20 have street lights, the majority of roads south of I-20 in the study area don't have street lights. Factory Shoals Road south of Riverside Parkway, including the Factory Shoals Road Bridge, does not have street lights and may be more dangerous for roadway users at night.

Input Activity

Tell us where additional lighting is needed.

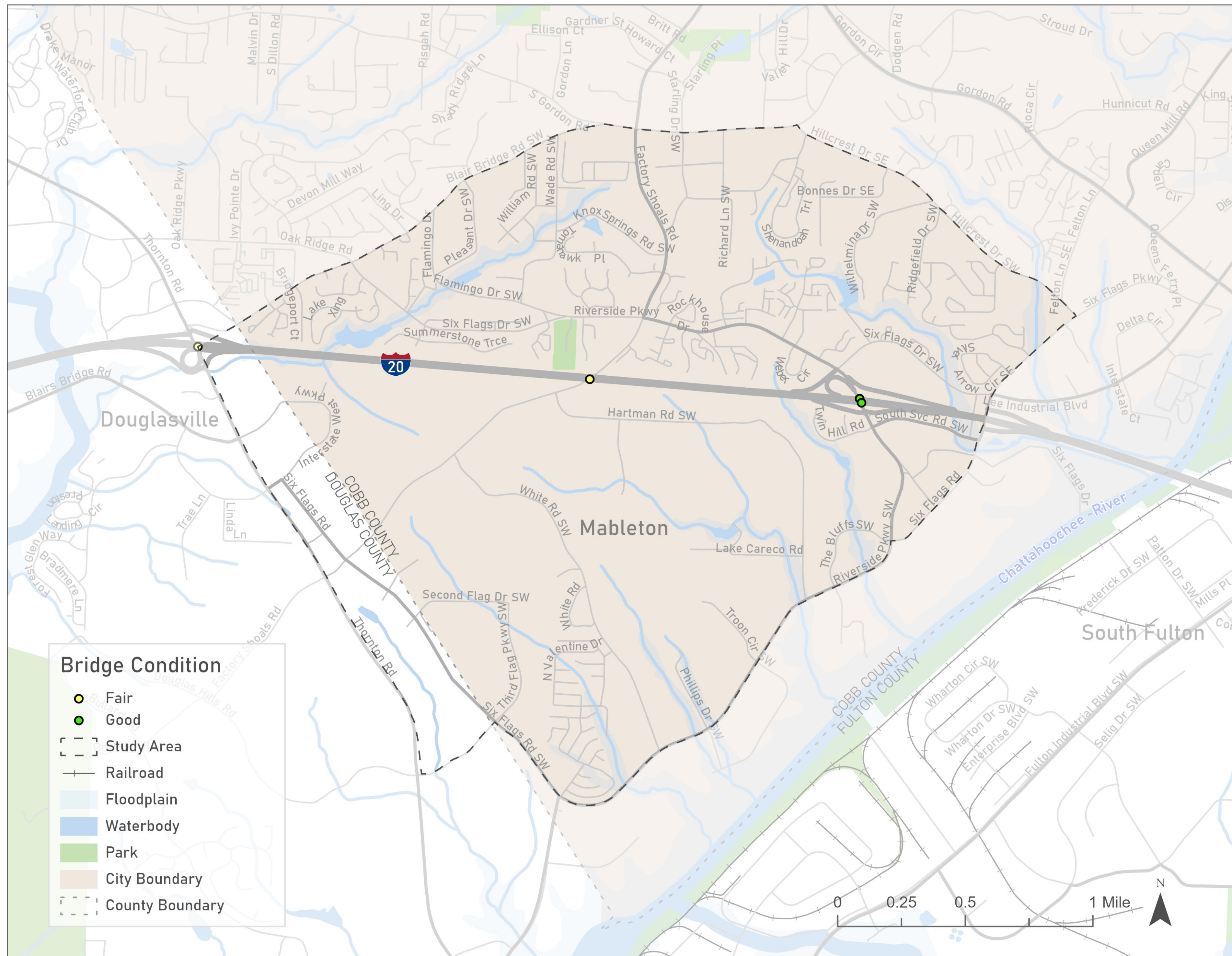
- Add dots to map to indicate specific locations.
- Use sticky notes to provide comments.





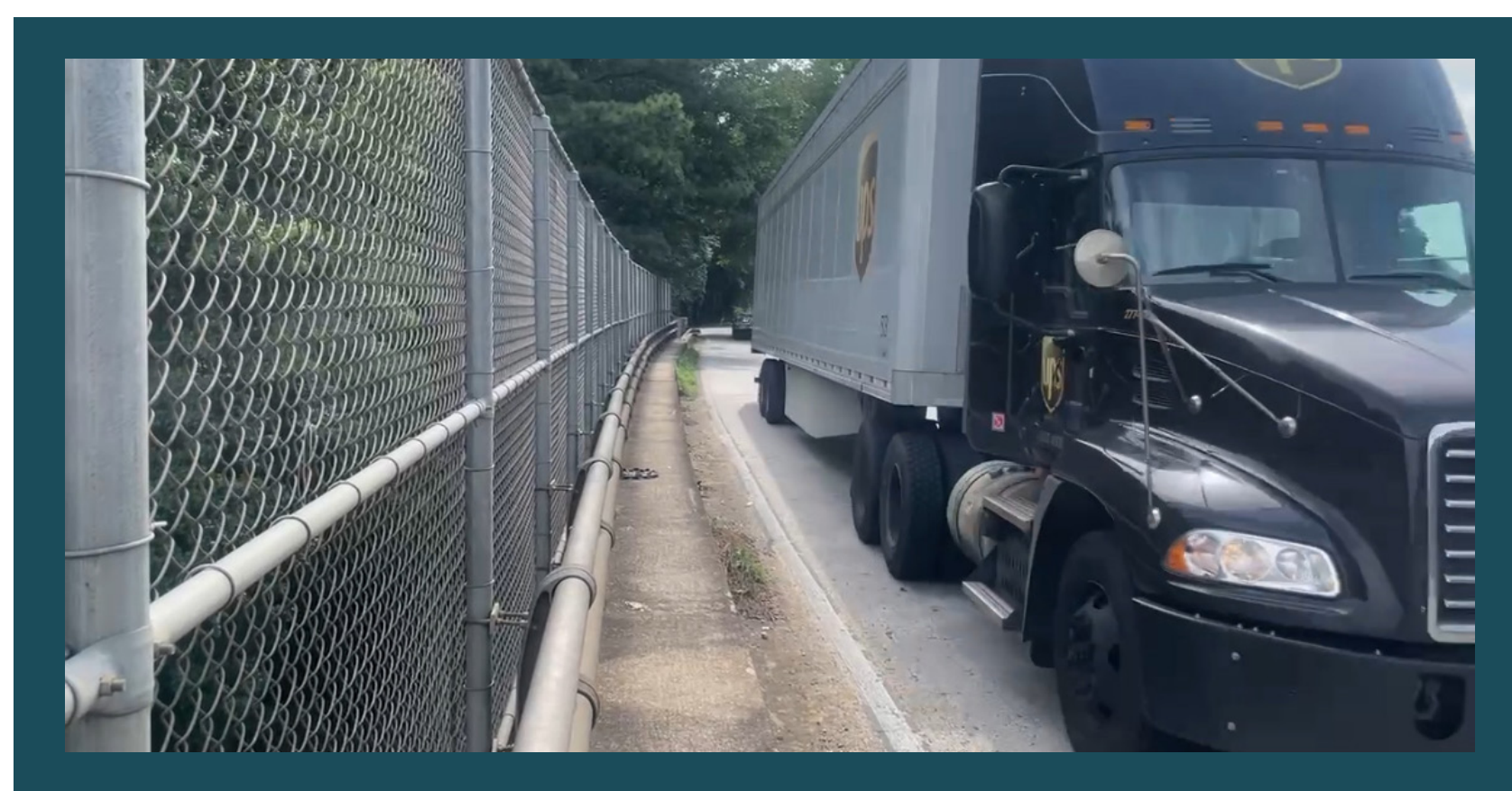
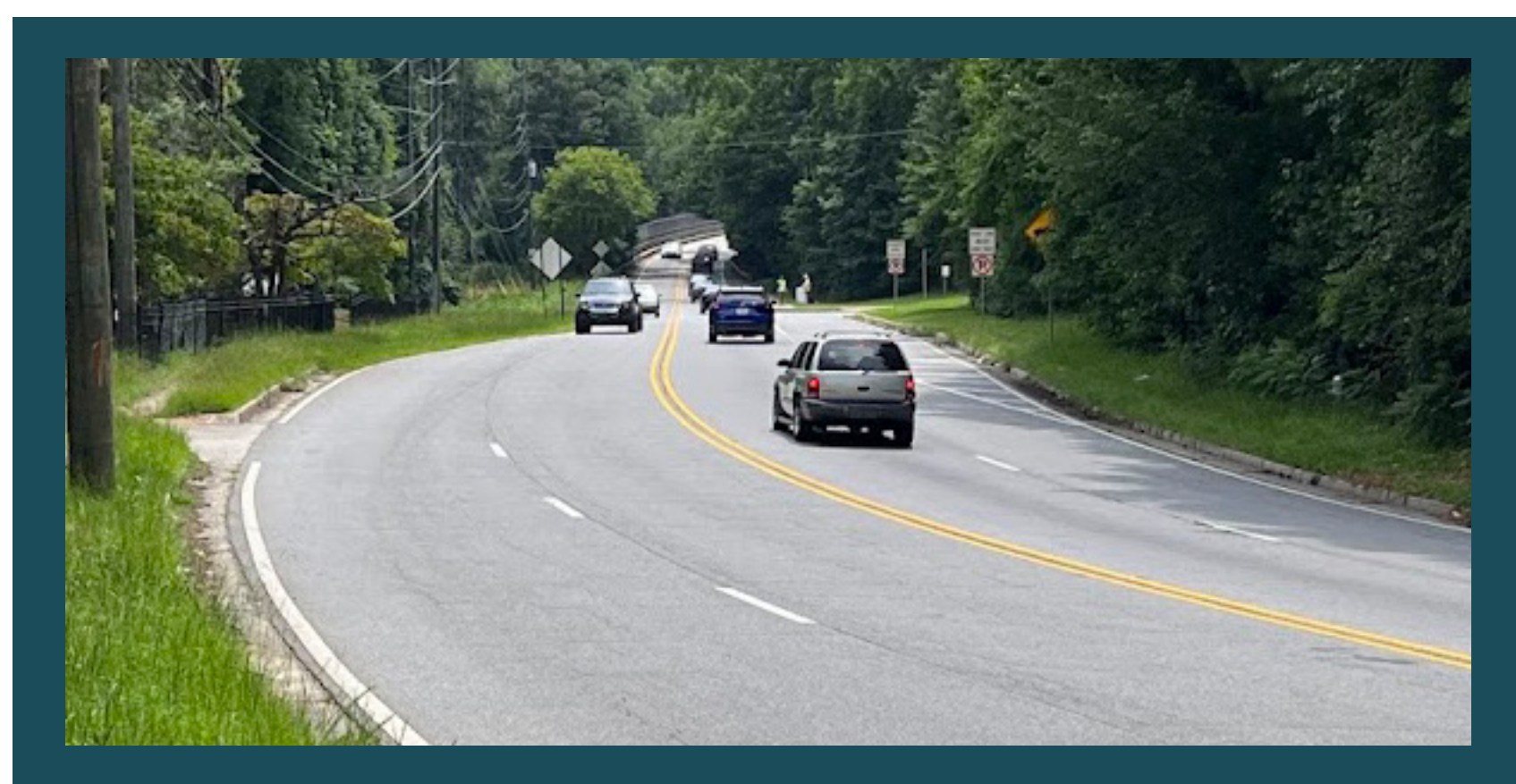
EXISTING SAFETY CONDITIONS

Bridge Conditions



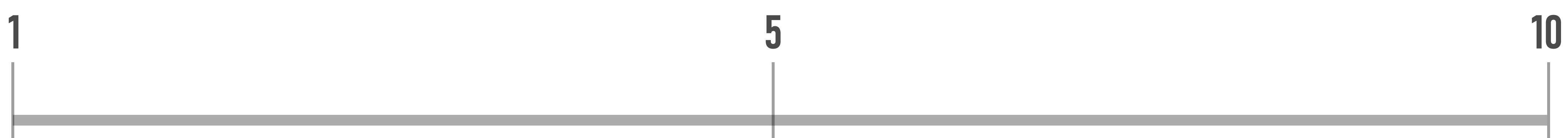
The Factory Shoals Road bridge over I-20 was built in 1963 and provides one of three connections across I-20 within the project study area. The bridge is currently in fair condition, although it does not meet FHWA bridge railing or transition standards. The roadway with on this bridge is 26.2 feet from curb to curb, and there are 2-foot curbs on each side of the roadway. The Factory Shoals Road bridge is maintained by the State Highway Agency.

Factory Shoals Road Bridge at I-20



Input Activity

Have you crossed over I-20 on Factory Shoals Road? How safe does it feel on a scale of 1 (not safe at all) to 10 (extremely safe). Add a dot to indicate how safe you feel crossing. Add additional comments below the scale.





STREET INTERVIEWS

Overview

The study team spent over eight hours in the study area talking with pedestrians and cyclists and observing the interaction of cars and people on foot and bike.

These street interviews took place just north and south of the Factory Shoals Road bridge over I-20 and at bus stops on Riverside Parkway nearest to Factory Shoals Road. Observations took place over the course of four days and four different time periods: two occurred in the morning (roughly 7 a.m. to 9 a.m.) and two occurred in the afternoon between 1 p.m. and 5 p.m. The team spoke with roughly 20 people.

Locations

- North side of Factory Shoals Rd Bridge at I-20
- South side of Factory Shoals Rd Bridge at I-20
- CobbLinc bus stops at Riverside Pkwy near Factory Shoals Rd

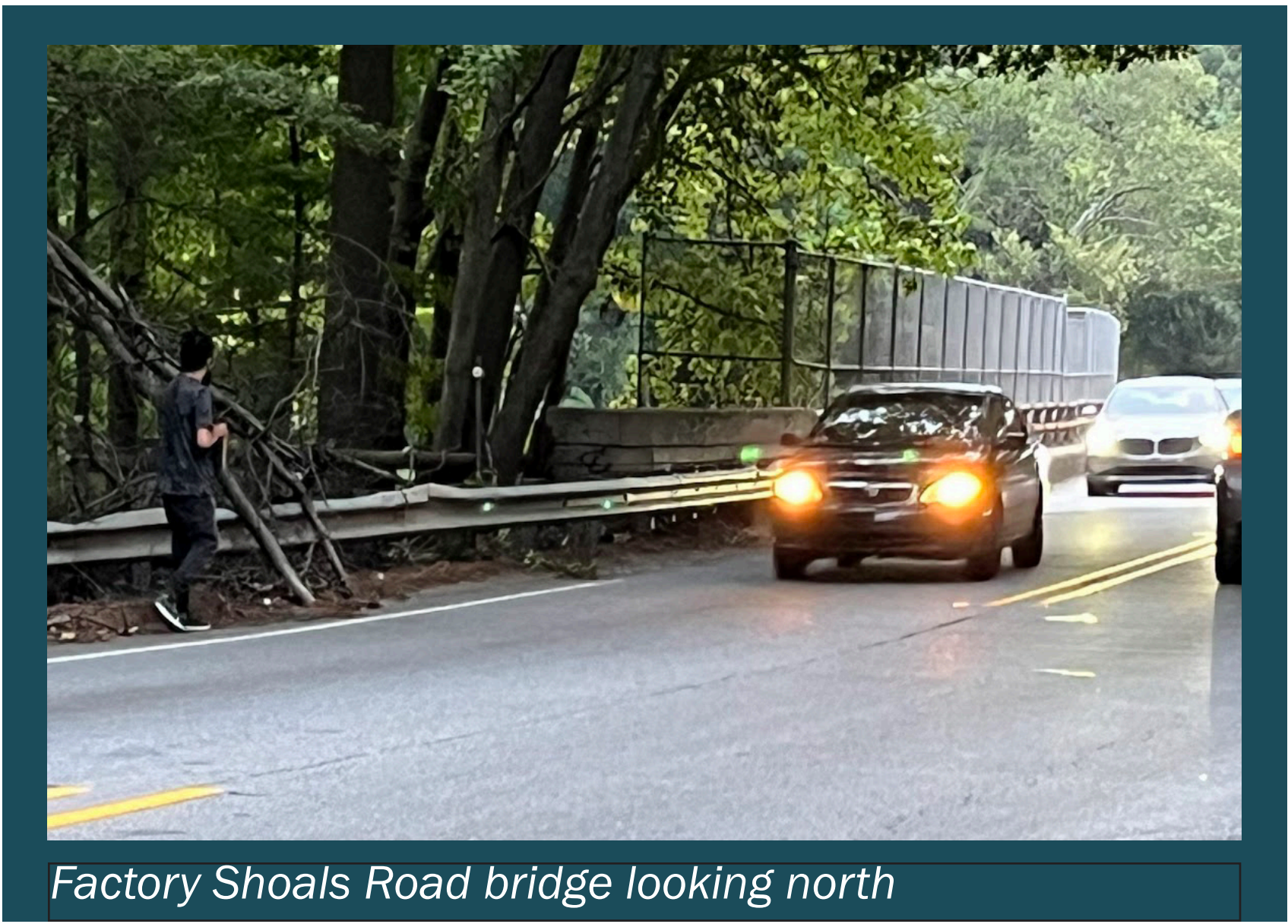
Observations

- Mix of ages and ethnicities crossing I-20 bridge
- Combination of bike riders, bus riders, and 1 skateboarder
- People from apartment complex north of bridge are also crossing the bridge

Input Collected

- Concerns include unsafe conditions on bridge, lack of lighting, and lack of crosswalks on Factory Shoals Road.
- Most people going to or from work when crossing I-20.
- Several freight trucks, buses, and cars traveling at high speeds along Factory Shoals

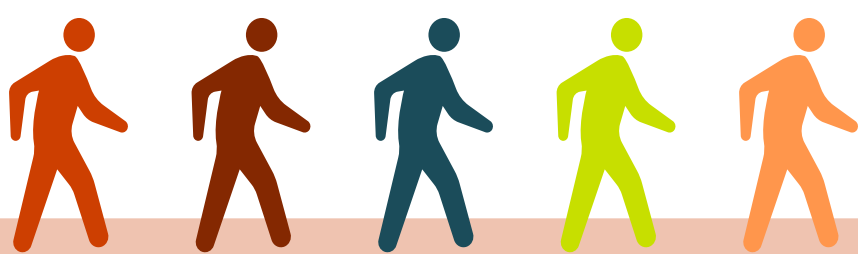
Factory Shoals Road Bridge at I-20



Input Activity

Do you walk, bike, or drive across Factory Shoals Road Bridge at least 1 time per month? Mark the ones that apply in box below.

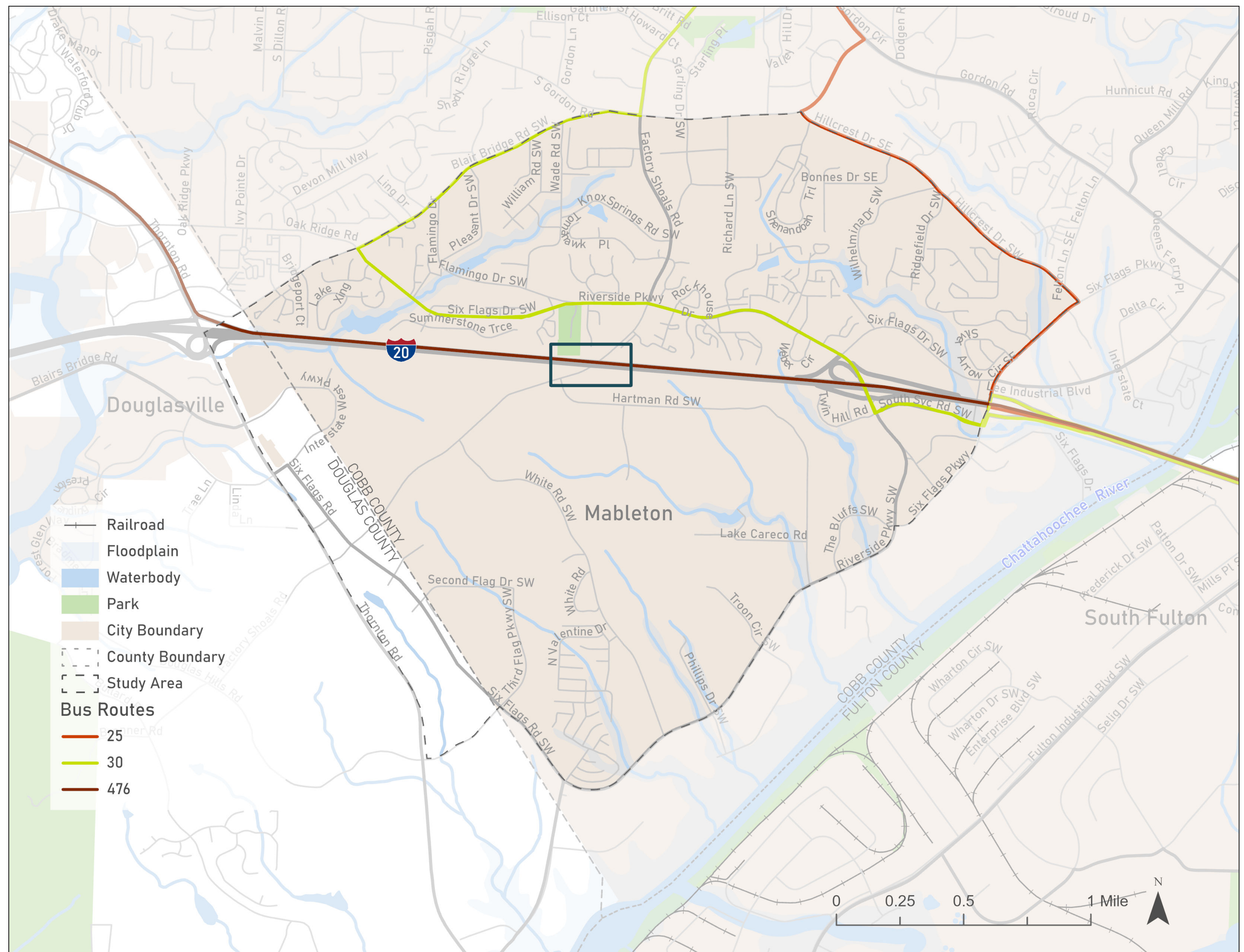
WALK	BIKE	DRIVE





NEXT STEPS

The next steps in the planning process include finalizing the Existing Conditions and Needs Assessment and beginning the Alternatives Analysis. The project team will determine three alternative solutions for improving connectivity and safety for pedestrians crossing I-20 based on the existing conditions assessment and needs analysis, as well as public and stakeholder input. The alternative analysis will consider bridge connection, transit implementations, safety improvements, and non-bridge alternatives with planning-level cost estimates. A Preliminary Cobb Concept Report will be developed for the preferred alternative, which will be reviewed by the public and stakeholders. Finally, a report will be developed to provide guidance for the final recommendations.



Alternative Considerations

Bridge Connection
Over I-20

Transit
Implementation

Safety
Improvements

Non Bridge
Alternatives

General Comments

Use the space to the right to provide comments on sticky notes. You can also provide feedback on the forms provided at the sign-in table.

