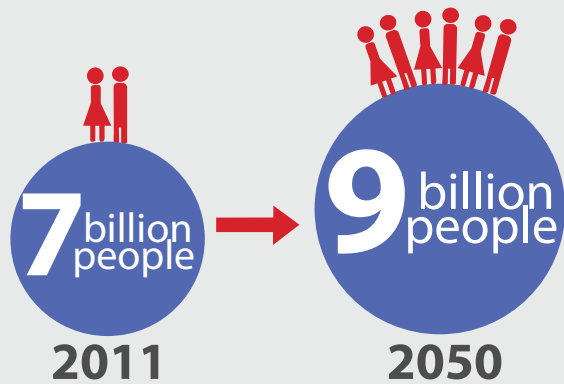


The earth's population is expected to exceed 9 billion and the demand for energy has been growing exponentially since the industrial age.



# THE GLOBAL ENERGY MIX

Current leading sources of energy are all non-renewable sources that have severe adverse effects on the environment during the processing and/or use.



The era of going green is underway, and now the general population has an idea of how harmful non-renewable energy sources are. Recent technologies have vastly improved the way we use our renewable energy sources, and the fast depletion of non-renewable energy will drive their development.



By the year 2050, our current energy consumption is expected to **TRIPLE** the amount of energy we currently use!

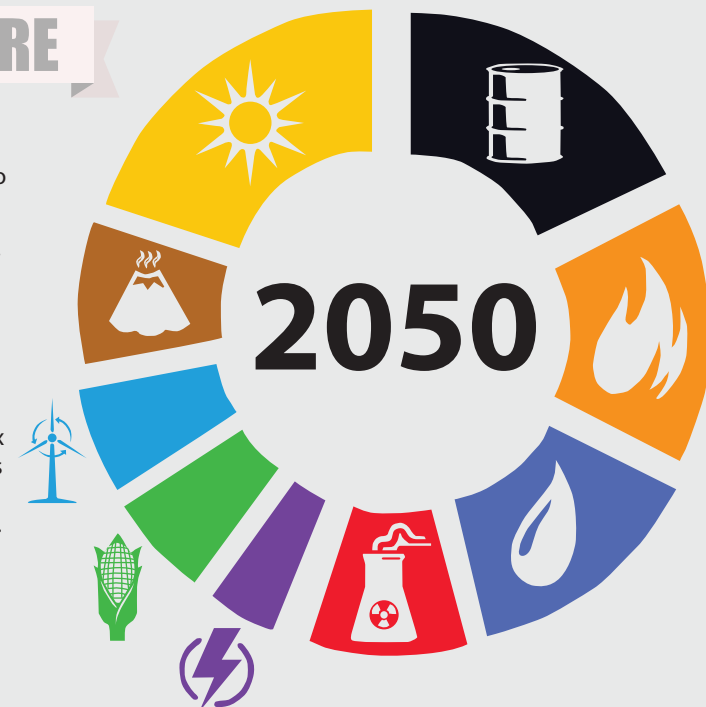


## TODAY

As of 2011, oil holds the largest share of the global energy mix, seizing approximately 33% of the world energy use. Trailing just behind it are coal and natural gas each taking up approximately 32% and 24% of the total energy consumption in the year 2011. Renewable energy sources today only make up less than 11% of total energy usage.

## THE FUTURE

Solar energy is suspected to be the leading energy source in the year 2050 making up close to 20% of all our future energy consumption. Following close behind will be oil (18%), natural gas (15%), hydroelectricity (14%), geothermal (8%), and a mix of other renewable sources completing the rest of the global energy mix by 2050.



## LEGEND

