



Decommissioning  
**San Onofre**  
Nuclear Generating Station

Safety | Stewardship | Engagement

## LEARN MORE ABOUT THE DECOMMISSIONING OF THE SAN ONOFRE NUCLEAR POWER PLANT.

# COME

to the plant and take a walking tour. Scan this QR code to schedule your visit.



# VISIT

[songscommunity.com](https://songscommunity.com) for the most current information about our decommissioning activities and deconstruction schedule.

# TALK TO US

We'd be happy to come share information about the plant with you, your community association or organization.

PRESORTED  
FIRST-CLASS MAIL  
US POSTAGE PAID  
INDUSTRY, CA  
PERMIT 4171

Decommissioning  
**San Onofre**  
Nuclear Generating Station

Safety | Stewardship | Engagement



SONGS – SCE  
P.O. Box 4030  
San Clemente, CA 92674

**To contact our deconstruction liaison**  
call **1 (888) 797-2404** or email us at  
**SONGSdecomm@sce.com**



Decommissioning  
**San Onofre**  
Nuclear Generating Station

Safety | Stewardship | Engagement

## SAN ONOFRE DECOMMISSIONING UPDATE

Q3  
2025

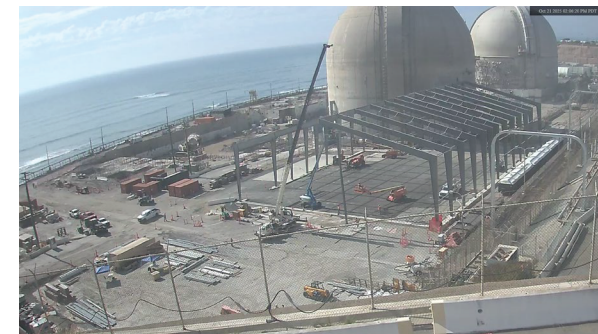
### DEMOLITION ACCELERATES AT SAN ONOFRE

With three years left in major demolition work, crews have already torn down most of the buildings at the San Onofre Nuclear Generating Station (SONGS).

To date, over 6,400 shipments and over 570 million pounds of material have been transported offsite. Rail cars and trucks are now moving more debris than ever as teams clear the way for the biggest milestone yet: removing the two containment domes.

Crews continue to dismantle the remaining components inside the SONGS containment domes to prepare for demolition of the domes, starting with Unit 3 in late 2026.

On the south side of Unit 3, workers are building a large tent to stage and process materials for transport offsite (see photo below). A similar tent will go up next year on the north side of Unit 2.


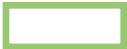







## DECONSTRUCTION ACTIVITY

All deconstruction activity will take place at the SONGS site

**Schedule is subject to change.** In addition to the activities listed below, material deliveries and waste shipments will continue throughout the deconstruction period.

LEGEND	WORK ACTIVITY	WORK PERFORMED Q3 2025	WORK AHEAD Q4 2025
	<b>North and East areas (parking lot areas)</b>	<ul style="list-style-type: none"> <li>Continued material delivery and removal</li> <li>Began removal of equipment from Parking Lot 4</li> </ul>	<ul style="list-style-type: none"> <li>Continue material delivery and removal</li> <li>Continued equipment removal from Parking Lot 4</li> </ul>
	<b>Containment Buildings (the domes) and connected buildings</b>	<ul style="list-style-type: none"> <li>Continued interior demolition and reactor segmentation</li> <li>Continued hazardous materials removal</li> <li>Completed large component removal</li> <li>Completed Tank Building demolition</li> <li>Completed Penetration Building demolition</li> <li>Continued Fuel Handling Building demolition</li> <li>Begin foundations and steel erection for Unit 3 Material Handling Tent (MHT)</li> </ul>	<ul style="list-style-type: none"> <li>Continue interior demolition and reactor segmentation</li> <li>Continue hazardous materials removal</li> <li>Continue Fuel Handling Building demolition</li> <li>Continue Unit 3 MHT steel erection, begin installation of fabric cover and ventilation system</li> </ul>
	<b>Outer Buildings (administration buildings)</b>	<ul style="list-style-type: none"> <li>Continued to manage material and load railcars</li> </ul>	<ul style="list-style-type: none"> <li>Continue to manage material and load railcars</li> </ul>
	<b>Turbine Building and Intake/ Forebay Structure</b>	<ul style="list-style-type: none"> <li>Continued demolition material management</li> </ul>	<ul style="list-style-type: none"> <li>Continue demolition material management</li> </ul>
	<b>South Yard Buildings</b>	<ul style="list-style-type: none"> <li>No demolition work performed</li> </ul>	<ul style="list-style-type: none"> <li>No demolition work planned</li> </ul>
	<b>Site wide</b>	<ul style="list-style-type: none"> <li>Continued site assessments and monitoring</li> <li>Continued waste shipments</li> </ul>	<ul style="list-style-type: none"> <li>Continue site assessments and monitoring</li> <li>Continue waste shipments</li> </ul>



Top Photo: Unit 3 demolition progress

Bottom Photo: Unit 2 Spent Fuel Handling Building demolition