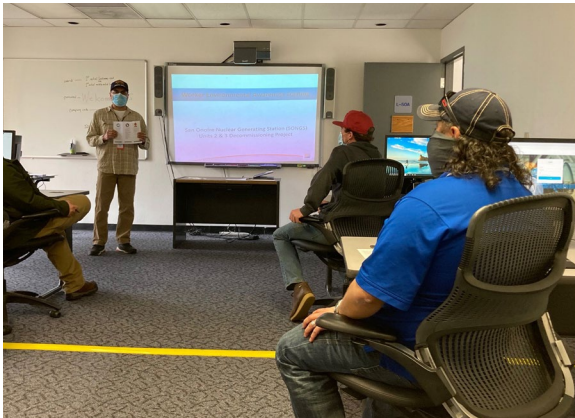


## DEMOLITION GETS UNDERWAY

This Spring, after nearly a year of preparations, the first set of buildings and structures at the southern end of the plant will come down. Here at SONGS, this demolition work is done by highly skilled professions to ensure the safety of our workers, the public and the environment throughout the process.

Safety protocols are in place to ensure the work is done in strict compliance with federal and state safety regulations. Proper planning and preparations included engineering surveys to assess the condition of the buildings and structures; disconnecting electrical services or relocating nearby utilities; fire prevention and evacuation planning, as well as assessments of potential health hazards. Steps are taken to ensure the appropriate housekeeping is done and debris is appropriately disposed of and lay down areas are clean.

Additionally, safety training is essential for all involved in decommissioning SONGS. Training and daily safety messages promote a strong safety mindset. Work is carefully choreographed to make way for the next activity with appropriate hand offs so that step by step we successfully complete the work.



All workers must complete Worker Environmental Awareness Program training before they can work at SONGS.

Decommissioning  
**San Onofre**  
Nuclear Generating Station  
Safety | Stewardship | Engagement



5000 Pacific Coast Highway  
San Clemente, CA 92674

To contact our deconstruction liaison,  
call **800-681-6868** or email us at  
**SONGSdecomm@sce.com**



Decommissioning  
**San Onofre**  
Nuclear Generating Station

Safety | Stewardship | Engagement

## SAN ONOFRE DECOMMISSIONING UPDATE | APRIL 2021

### BUILDING DEMOLITION BEGINS

Dismantlement work at SONGS is building momentum on a number of projects around the site. One place this is happening is on the south end of the plant where the K-buildings (40 & 50, and the K-60 warehouse) are located. These buildings were the first office buildings utilized during the construction of Units 2 and 3. They were built in the 1970s for office space for the Bechtel field engineers, and SCE engineering and construction personnel. The large conference room is where daily updates were given on construction progress. We have a time-lapse camera in place to capture the buildings as they safely come down. We'll share that on our website in the future.

### A CHANCE FOR YOUR VOICE TO BE HEARD: ACTION FOR SPENT FUEL SOLUTIONS NOW COALITION

Fully decommissioning the SONGS site and returning it back to the Navy can't happen until all the spent nuclear fuel now in storage is relocated offsite. We'd like to see it go to a federal interim storage facility or permanent geologic repository. To help make that happen, SCE has joined with local partners to form a coalition, Action for Spent Fuel Solutions Now, to advocate for federal action. If you'd like to join us, please visit the coalition website ([www.SpentFuelSolutionsNow.com](http://www.SpentFuelSolutionsNow.com)), and sign up. Together, we can make positive change and move the spent fuel off our coastline.

#### **Doug Bauder**

*Vice President and Chief Nuclear Officer  
San Onofre Nuclear Generating Station  
Southern California Edison*

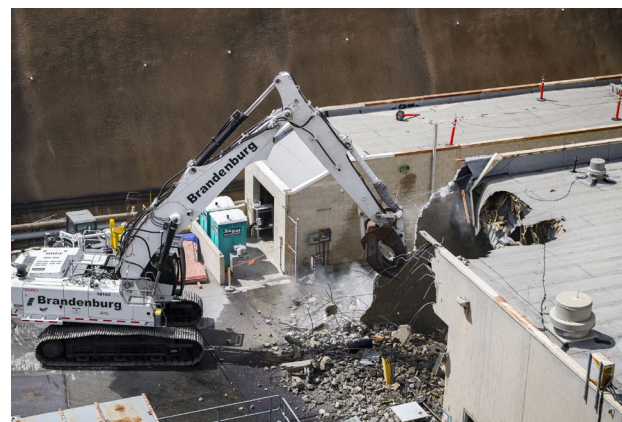


## DECONSTRUCTION ACTIVITY

Deconstruction activity to take place at the San Onofre Site

WORK ACTIVITY	WORK PERFORMED Q1 2021	WORK AHEAD Q2 2021
North and East areas (parking lot areas) (A)	<ul style="list-style-type: none"> <li>Continue delivery and shipment of materials</li> </ul>	<ul style="list-style-type: none"> <li>Continue delivery and shipment of materials</li> </ul>
U2 & U3 Containment Buildings (the domes) and connected buildings and transformers (B)	<ul style="list-style-type: none"> <li>Construction of access openings</li> <li>Isolation of utilities</li> </ul>	<ul style="list-style-type: none"> <li>Continue construction of access openings</li> <li>Continue isolation of utilities</li> </ul>
U2 & U3 Structures (turbine and transformers) (C)	<ul style="list-style-type: none"> <li>Removal of hazardous materials</li> </ul>	<ul style="list-style-type: none"> <li>Continue removal of hazardous materials</li> </ul>
Outer Buildings (administration and B/K buildings, diesel generator buildings, makeup demineralizer area and transformers) (D)	<ul style="list-style-type: none"> <li>Removal of hazardous materials</li> <li>Isolation of utilities</li> <li>Demolition</li> </ul>	<ul style="list-style-type: none"> <li>Continue removal of hazardous materials</li> <li>Demolition</li> </ul>
Site wide	<ul style="list-style-type: none"> <li>Continue site assessments and monitoring</li> </ul>	<ul style="list-style-type: none"> <li>Continue site assessments and monitoring</li> </ul>

**Please note that this schedule is subject to change.** In addition to those activities listed above, material deliveries and waste shipments will continue throughout the deconstruction period.



*Full circle. The K-buildings (40 & 50, and the K-60 warehouse) were the first office buildings utilized during the initial construction of Units 2 and 3. Today, they are the first buildings to be taken down.*