



CALIFORNIA ENERGY COMMISSION

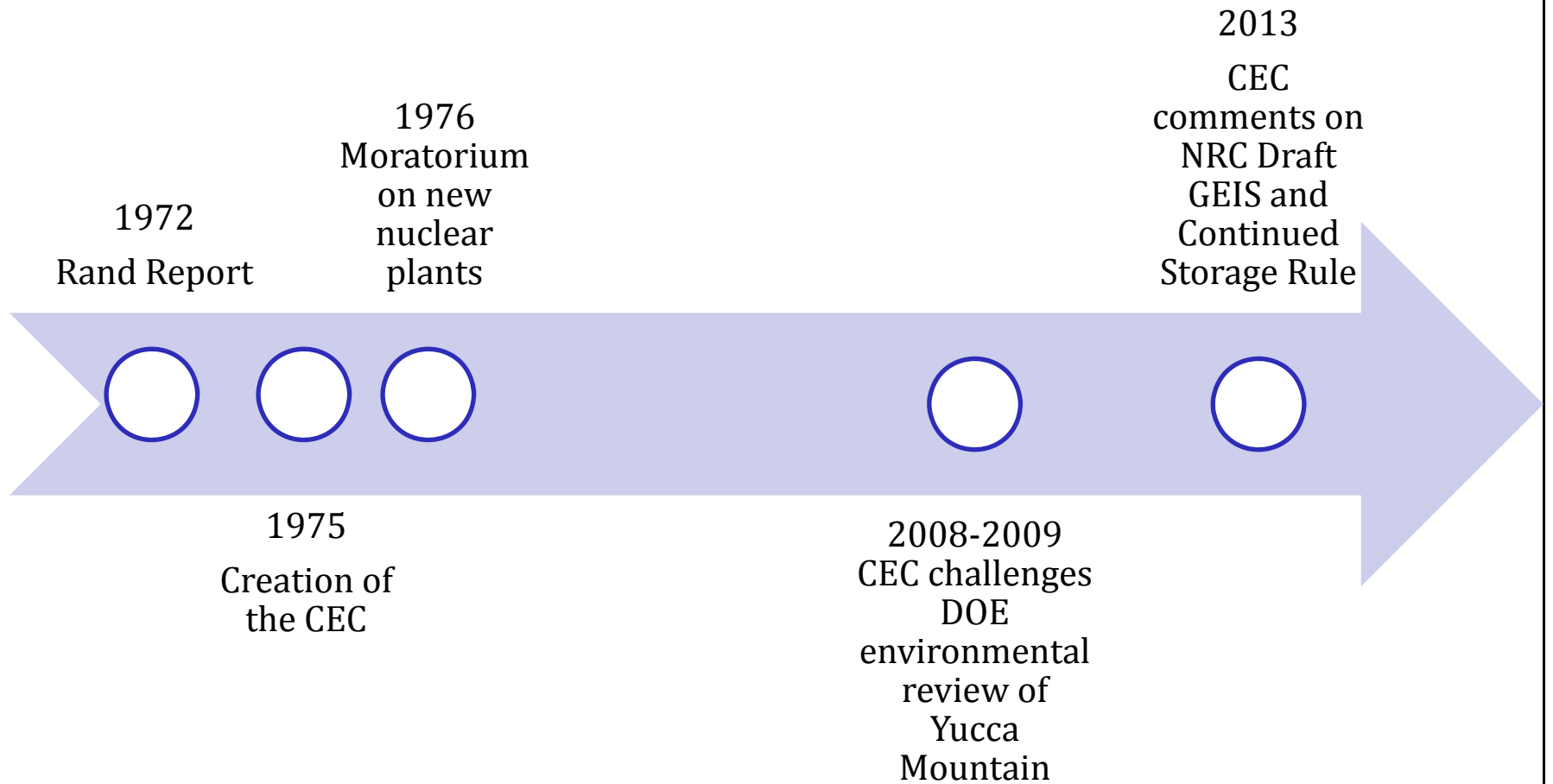
California Actions on Nuclear Waste Policy

Robert P. Oglesby
Executive Director
California Energy Commission

Bipartisan Policy Center
January 27, 2015



CEC's Nuclear History





CEC's Role in Nuclear Waste Transport and Storage

- Federal
 - State Liaison Officer to the Nuclear Regulatory Commission
 - Filings and comments on Yucca Mountain and Continued Storage
- Regional
 - Western Interstate Energy Board High-Level Waste Committee
- State
 - California Nuclear Transport Working Group



California's Nuclear Power Plants



[Diablo Canyon Power Plant](#)



[San Onofre Nuclear Generating Station \(SONGS\)](#)



[Rancho Seco Power Plant](#)



[Humboldt Bay Power Plants, Units 1 and 2](#)



Diablo Canyon Units 1 and 2



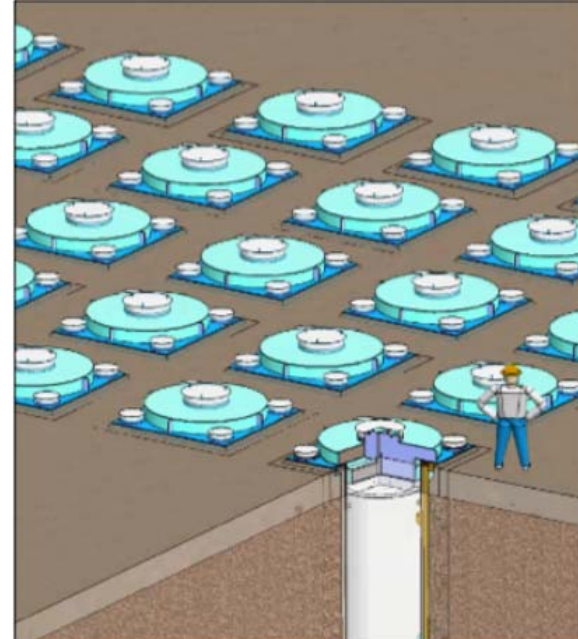
Source: [San Luis Obispo Tribune](#) and [KQED](#)



San Onofre Units 1, 2, and 3



Transnuclear NUHOMS System



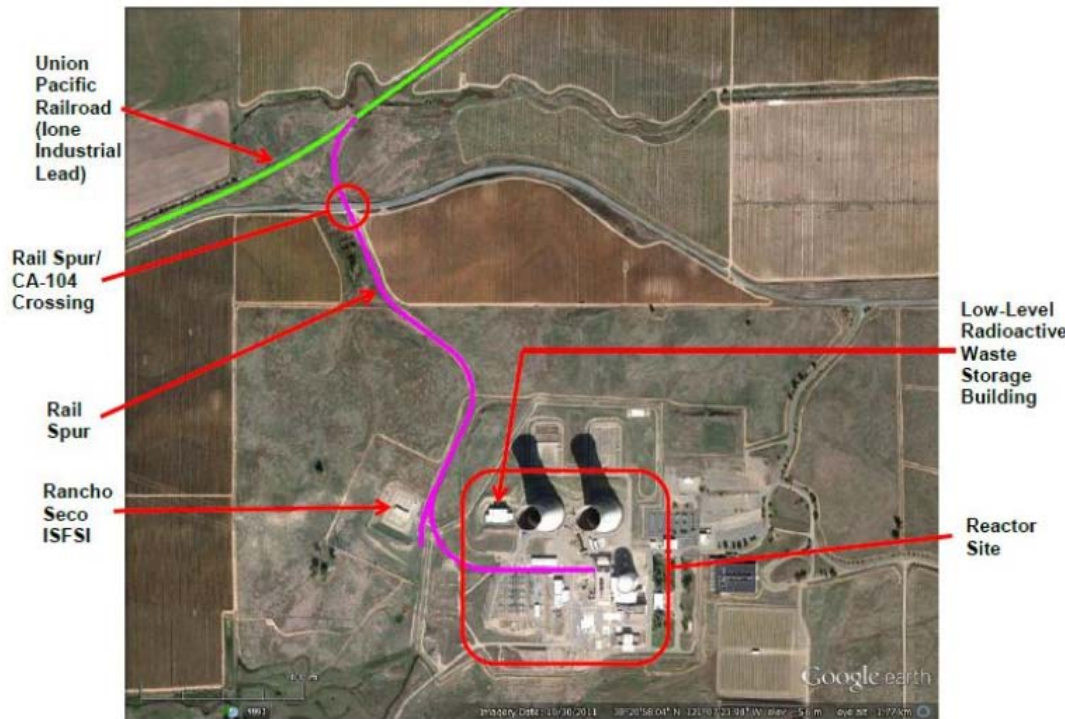
Holtec HI-STORM UMAX



Source: [Matthew Feldman, Department of Energy And Community Engagement Panel](#)



Rancho Seco Power Plant



Source: [Matthew Feldman, Department of Energy](#)

Transnuclear NUHOMS-24P



Humboldt Bay Power Plant



Holtec HI-STAR HB



Transport of an engine at Fields Landing Terminal

Source: [Matthew Feldman, Department of Energy](#)



Integrated Energy Policy Report

Selection of nuclear waste recommendations

- Evaluate California routes for nuclear waste transport (2005)
- Return spent fuel pools to less-crowded open racking arrangements (2008 and 2011)
- Estimate and assess costs of low level waste generation and disposal from operating and decommissioning sites (2008)
- Monitor key spent fuel pool parameters (2011)
- Expedite transfer of spent fuel assemblies from pools to dry cask storage (2013)



Contact Information

Rob Oglesby

Rob.Oglesby@energy.ca.gov

(916) 654-4996

<http://energy.ca.gov>