



General Fact Sheet

From our humble beginnings offering Neighbor Island trips on our three-aircraft fleet to servicing dozens of destinations in Asia, the South Pacific and the U.S. mainland, we've been honored to serve our guests for nearly a century.

— NUMBERS —

A legacy built on service, safety and punctuality



91 YEARS
& COUNTING

We operated our first flight on Nov. 11, 1929 using an amphibious S-38 aircraft. That day, thousands gathered to witness the first scheduled flight from Honolulu to Hilo, with a stop in Maui. The trip took three hours and fifteen minutes.



NO. 1
ON-TIME AIRLINE

For the past 16 years (2004-2019), we've remained the nation's most punctual carrier, according to the U.S. Department of Transportation.



7,000*
EMPLOYEES

Our employees are ambassadors of their island home, and proudly welcome our guests with aloha and authentic Hawaiian hospitality.

*Approximate count as of Feb. 1, 2021



110*
AVERAGE DAILY FLIGHTS

As Hawai'i's carrier, we're honored to share our warm hospitality and sense of aloha with millions of guests worldwide each year.

*Approximate count as of Feb. 1, 2021

— SERVICES —

Authentic Hawaiian hospitality in everything we do



DINING
ISLAND-INSPIRED

Curated by award-winning chef Lee Anne Wong, our Featured Chef Series offers specially designed menu creations from Hawai'i's top burgeoning chefs who are redefining Hawai'i regional cuisine.



BEVERAGES
HOT & COLD

We take the authentic flavors of Hawai'i to new heights with custom cocktails by On The Rocks and refreshing beers from Maui Brewing Co., to name just a few.*

*Alcohol is temporarily only served in the First Class/Business Class cabin.



MOVIES
GAMES & MORE

From the latest blockbusters to our exclusive island programming and award-winning magazine, our guests can choose from ample entertainment options throughout their journey. Traveling on our Airbus A321neo? Download the Hawaiian Airlines App prior to boarding to stream on your personal device.

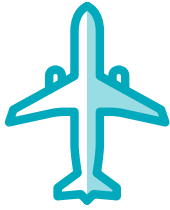


COMFORT
SIT BACK & RELAX

Our guests can indulge themselves with a leisure travel experience thanks to our in-flight and airport products, including premium seating, extended legroom, priority boarding, personal electrical power outlets, club access and more.

— FLEET —

A state-of-the-art fleet for a safe and relaxing travel experience



18

AIRBUS A321NEO

Seats 189 guests and serves mostly transpacific routes. The cabin pays homage to traditional Hawaiian craftsmanship and surrounds guests with island features including sand-inspired wall panels and mood-lighting.



24

AIRBUS A330

Seats 278 guests and serves transpacific routes. Upon entering our fleet, each A330 was named after a celestial marker used by ancient Polynesian navigators from *Hokupa'a* (Polaris) to *Hanaikamalama* (Southern Cross).



19

BOEING 717

Seats 128 guests and serves the Neighbor Islands. Our Boeing 717s were designed specifically for short-range, high-frequency trips throughout the Hawaiian Islands, allowing for timely connections to our mainland and international networks.

— DESTINATIONS —

Connecting the islands and sharing aloha with the world



5

NEIGHBOR ISLAND

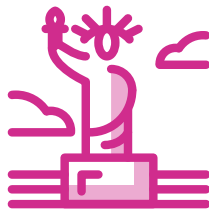
Our guests enjoy unmatched convenience with our more than 60* daily flights between the Hawaiian Islands.

Island of Hawai'i *as of Feb. 1, 2021
Kona (KOA)
Hilo (ITO)

Kaua'i
Līhu'e (LIH)

Maui
Kahului (OGG)

O'ahu
Honolulu (HNL)



16

NORTH AMERICA

We connect Hawai'i with 16 U.S. mainland cities, more than any other airline.

Arizona
Phoenix (PHX)

California
Los Angeles (LAX)
Long Beach (LGB)
Oakland (OAK)
Ontario (ONT)*
Sacramento (SMF)
San Diego (SAN)
San Francisco (SFO)
San Jose (SJC)

Florida
Orlando (MCO)*

Massachusetts
Boston (BOS)

Nevada
Las Vegas (LAS)

New York
New York City (JFK)

Oregon
Portland (PDX)

Texas
Austin (AUS)*

Washington
Seattle (SEA)



10

INTERNATIONAL

We offer non-stop service between Hawai'i and 10 destinations throughout Asia and the Pacific.

American Samoa
Pago Pago (PPG)*

Australia
Sydney (SYD)*
Brisbane (BNE)*

Japan
Haneda, Tokyo (HND)
Narita, Tokyo (NRT)
Osaka (KIX)
Sapporo (CTS)*
Fukuoka (FUK)*

New Zealand
Auckland (AKL)*

South Korea
Seoul (ICN)

Tahiti
Papeete (PPT)*

*Scheduled to launch:
MCO 3/11; ONT 3/16; AUS 4/21

*Service temporarily suspended