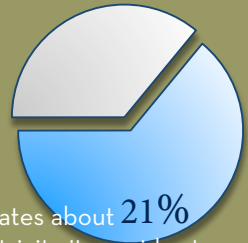


Southern California Edison (SCE), an Edison International company, is one of the nation's largest investor-owned utilities.

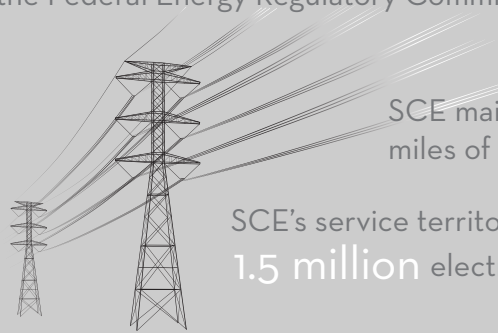


SCE generates about **21%** of the electricity it provides to customers, with the remaining **79%** purchased from independent power producers.

SCE's service territory includes about **430** cities and communities with a total customer base of about **4.9 million** residential and business accounts.

The company serves nearly **14 million** people in a **50,000-square-mile** service area within Central, Coastal and Southern California.

SCE is regulated by the California Public Utilities Commission and the Federal Energy Regulatory Commission.



SCE maintains more than **115,000** miles of transmission lines.

SCE's service territory contains approximately **1.5 million** electricity poles.



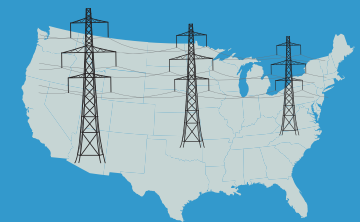
Based in Rosemead, Calif., the utility has been providing electric service in the region for more than **120** years.



During the past five years, SCE's energy efficiency programs have helped customers save enough energy to power **1.2 million** homes for a year.



In order to continue powering California's growing population and economy, SCE plans to invest up to **\$20.4 billion** over the next four years expanding and strengthening its electric system infrastructure.



If you were to lay down the wires that make up SCE's extensive transmission and distribution network end to end, they would traverse the United States approximately

40
times.

SCE was founded on **July 4, 1887.**



In 2012, SCE handled more than **14 million** phone calls in **7** languages.



In 2012, Edison employees donated more than **240,000** volunteer hours.



SOUTHERN CALIFORNIA
EDISON[®]

An EDISON INTERNATIONAL[®] Company