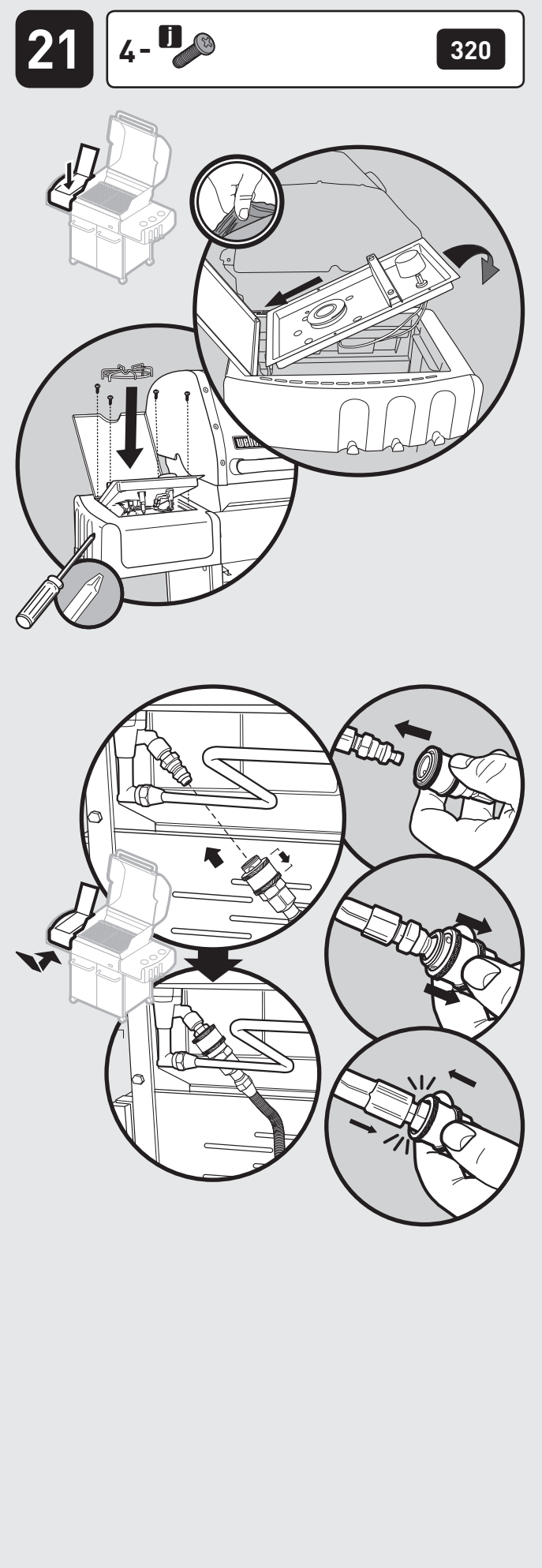
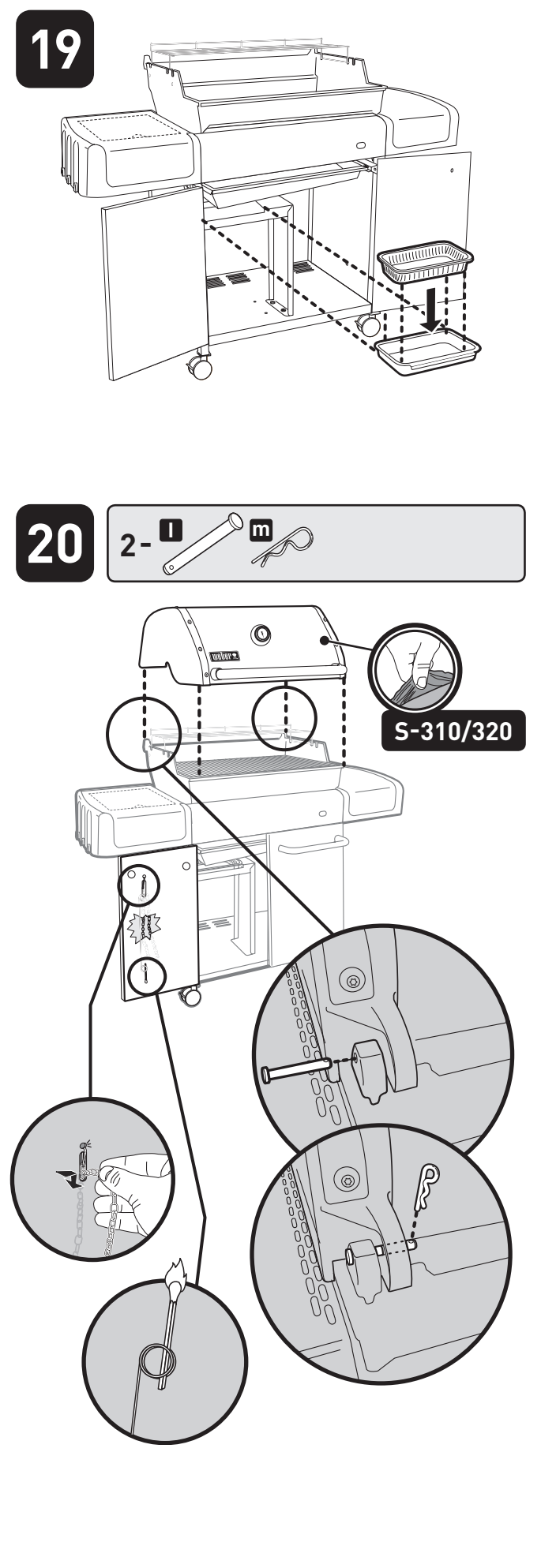
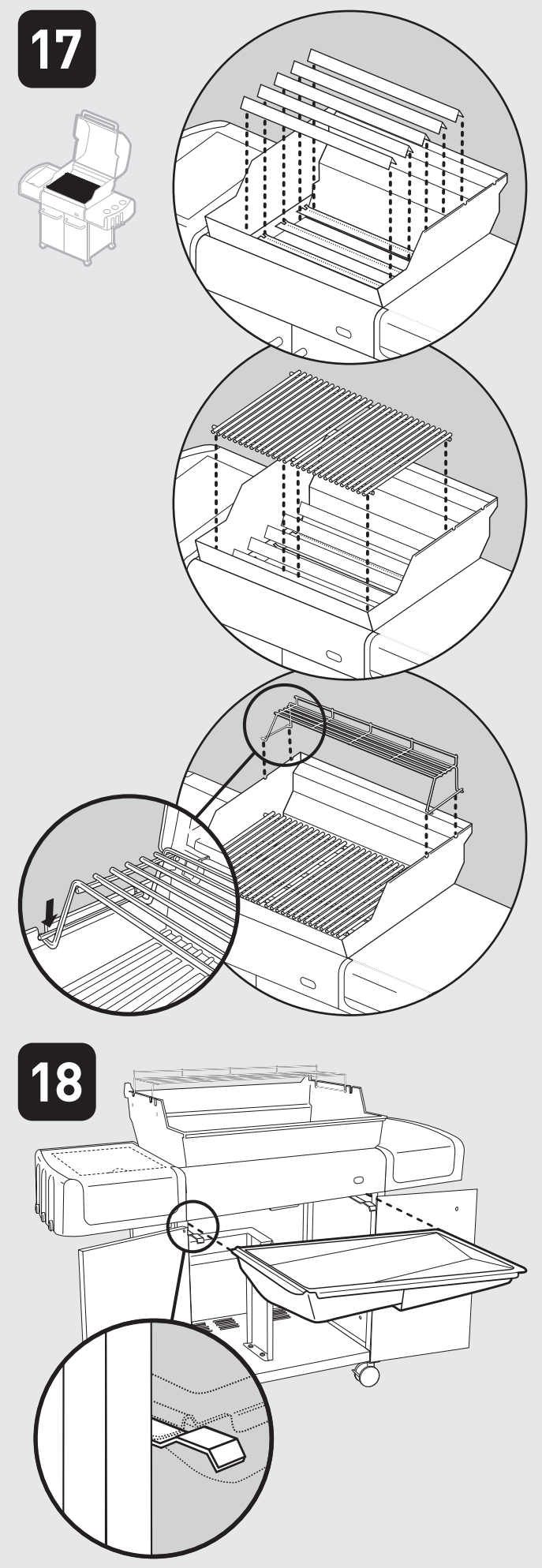
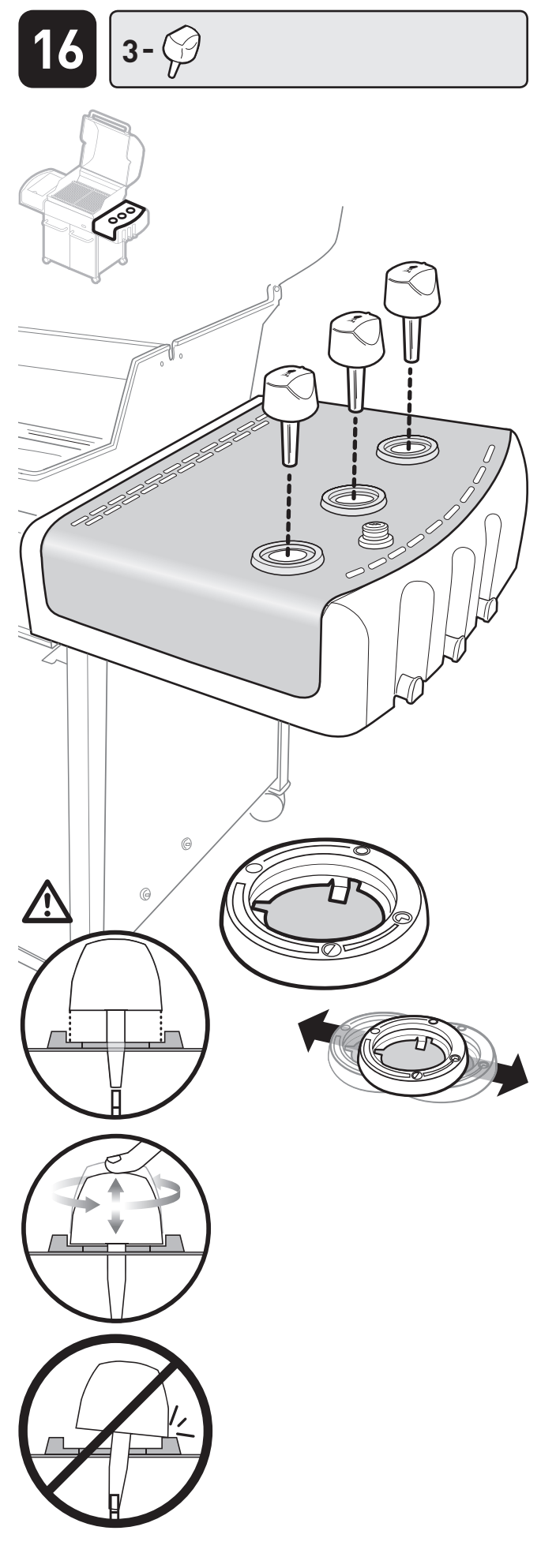


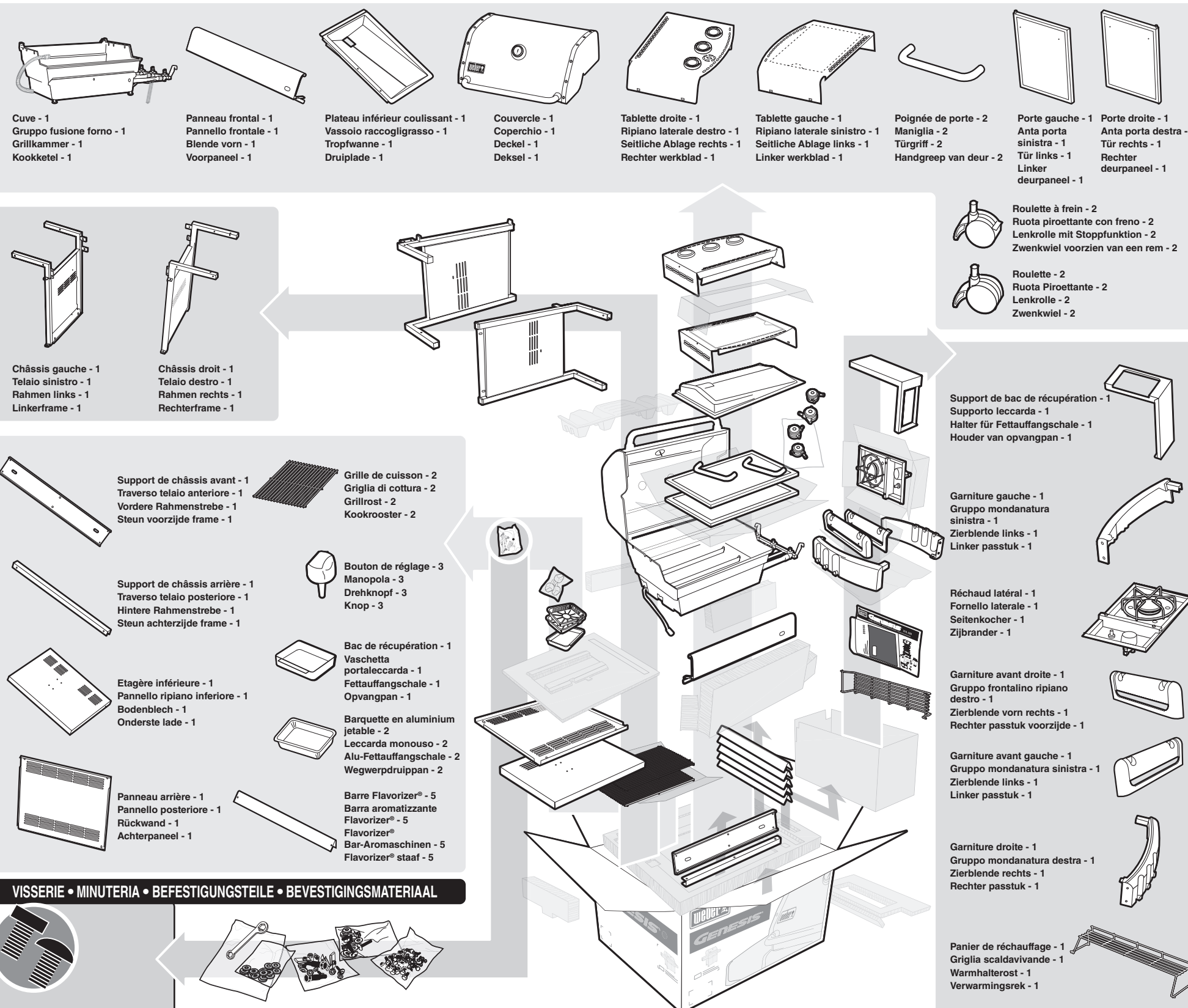
- VISSERIE  
MINUTERIA  
BEFESTIGUNGSTEILE  
BEVESTIGINGS-  
MATERIAAL
- k**  
Vis - 5  
Vite - 5  
Schraube - 5  
Schroef - 5
- l**  
Axe d'articulation - 2  
Perno con testa plana - 2  
Bolzen mit Kopf - 2  
Trekpen - 2
- m**  
Goupille Beta - 2  
Coppiglia - 2  
Splint - 2  
Splitten - 2
- n**  
Clip en J - 7  
Staffetta a L - 7  
J - Klammer - 7  
J-Clip - 7
- o**  
Rondelle en aluminium - 6  
Rondella in alluminio - 6  
Aluminiumscheibe - 6  
Aluminium sluitring - 6



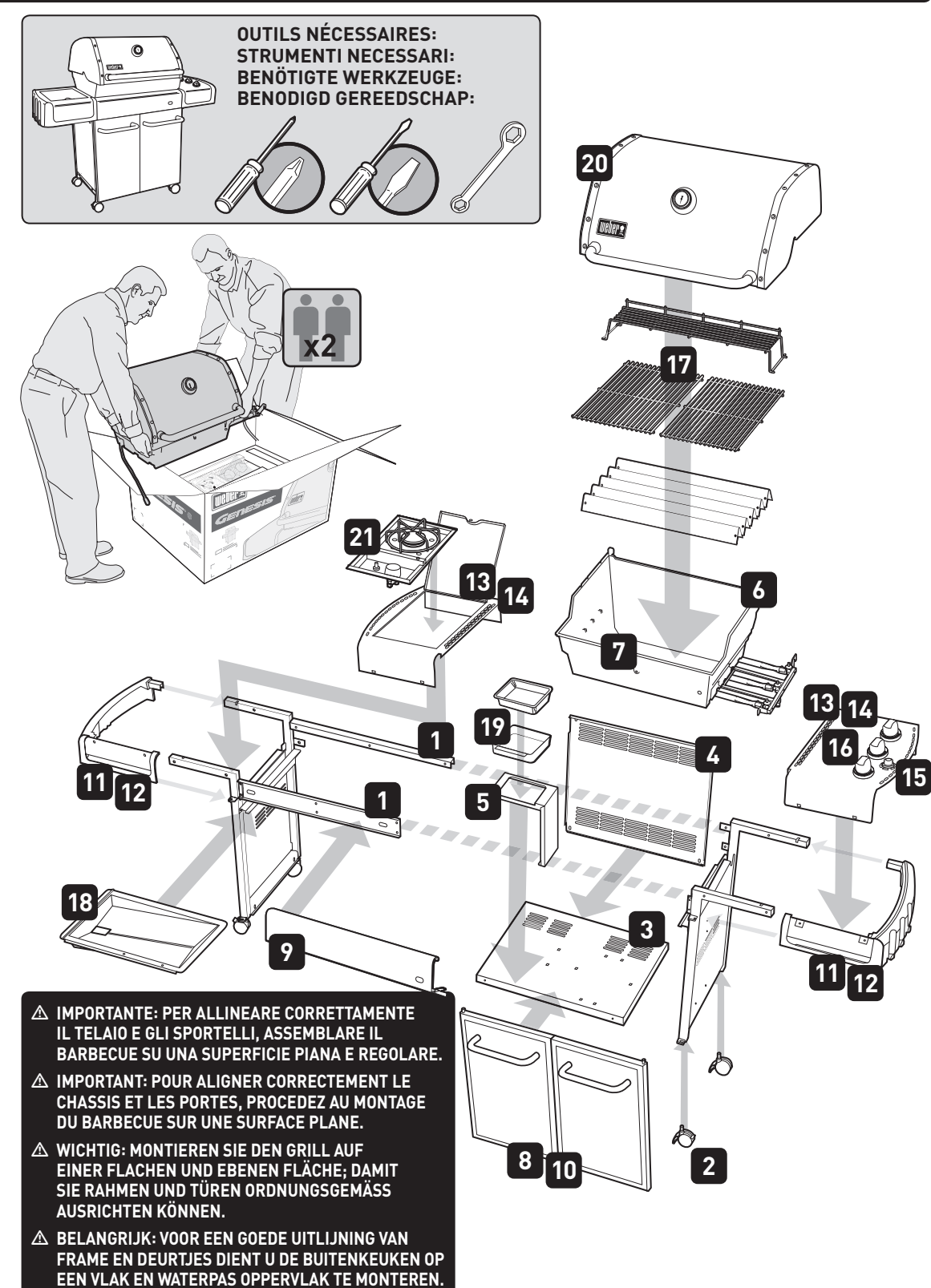
# GENESIS® 310, 320

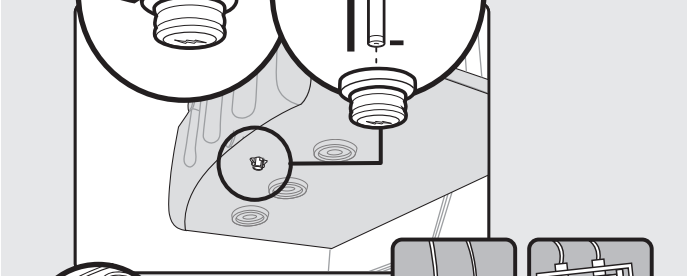
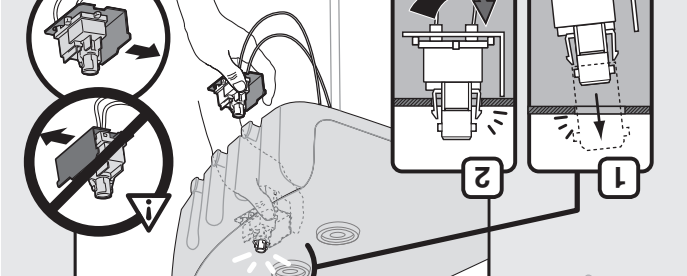
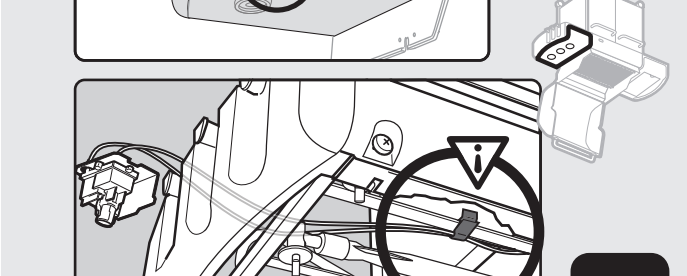
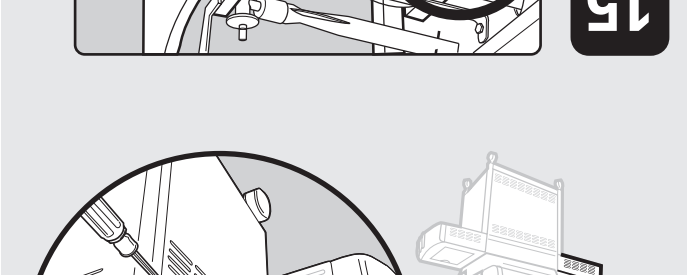
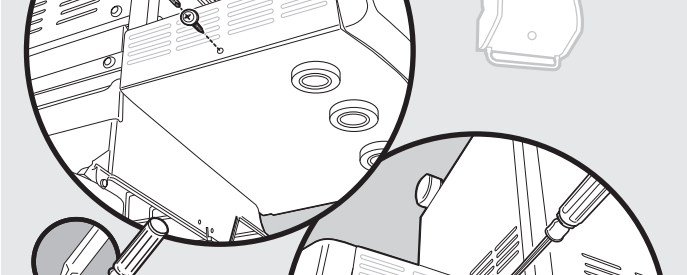
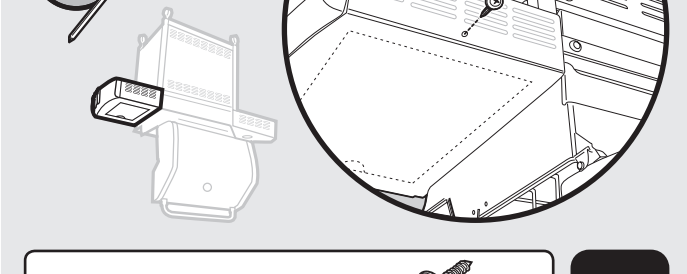
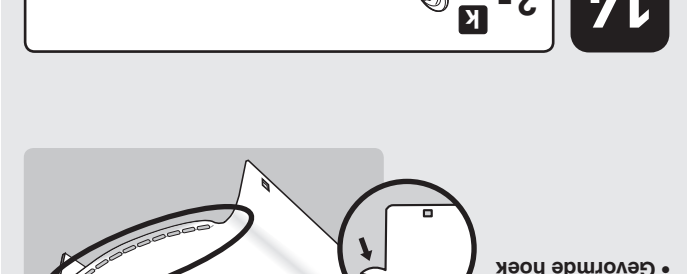
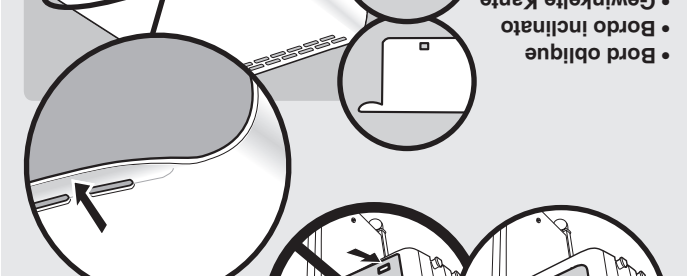
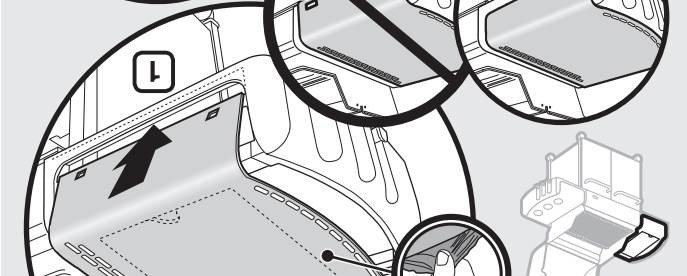
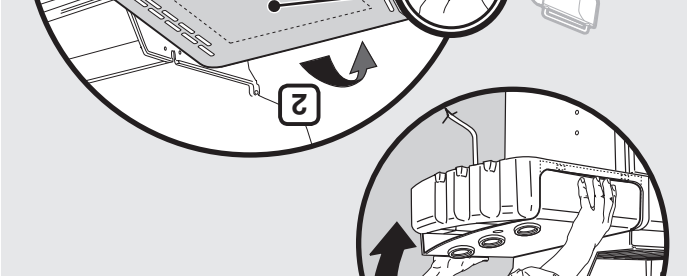
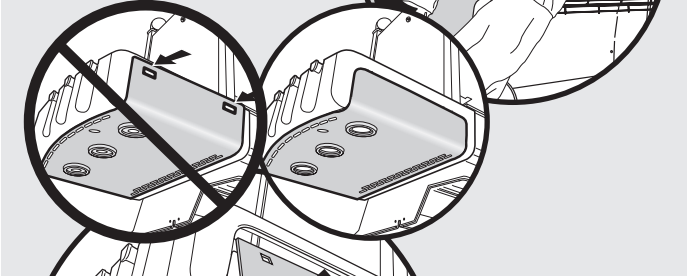
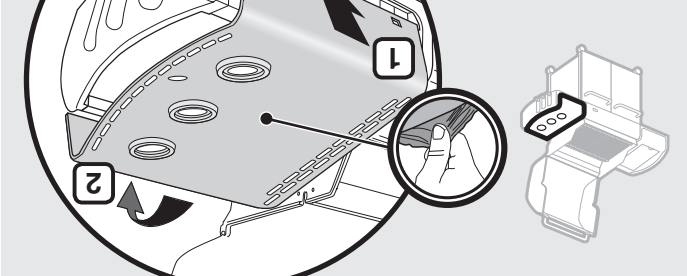
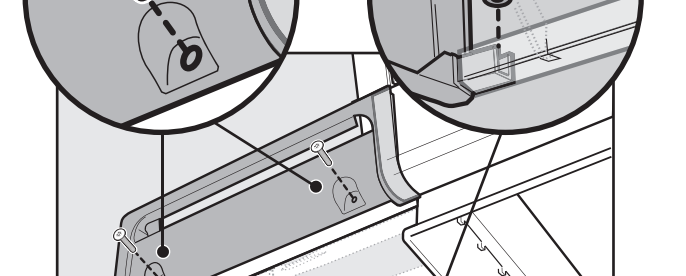
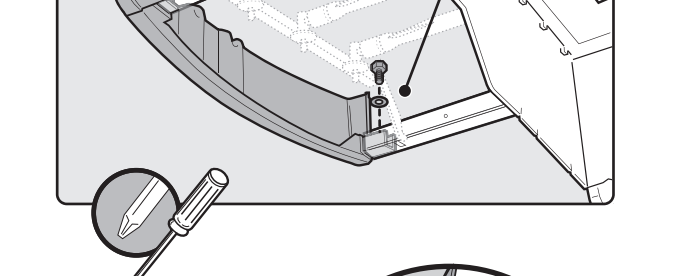
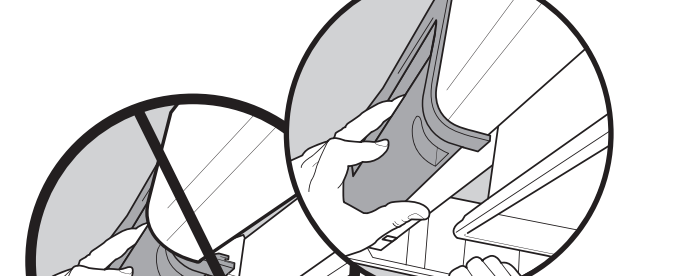
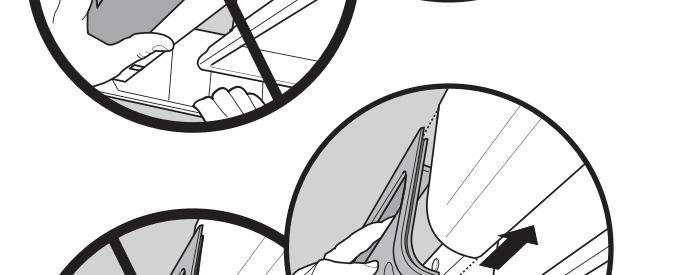
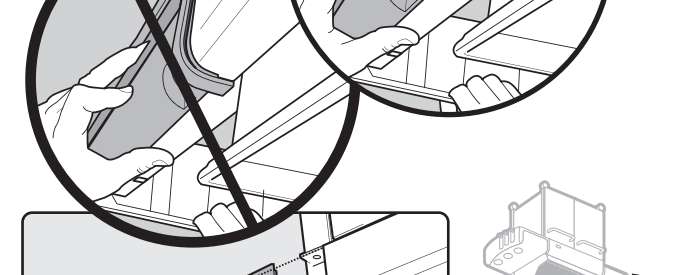
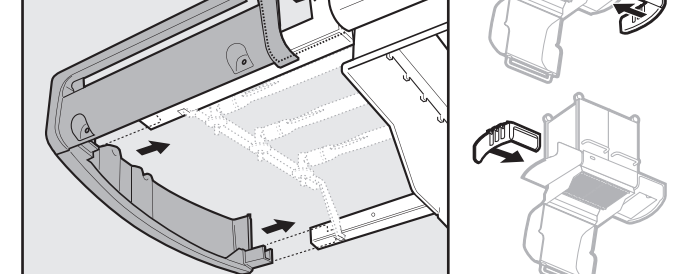
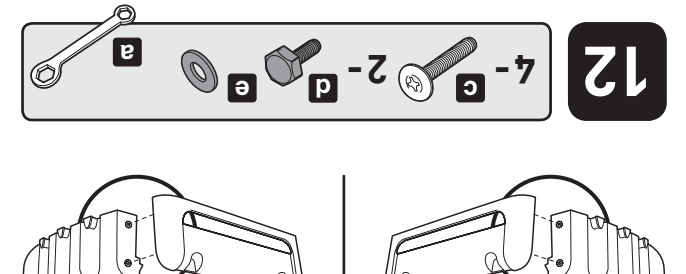
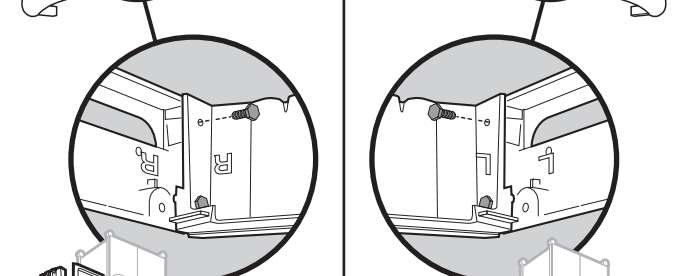
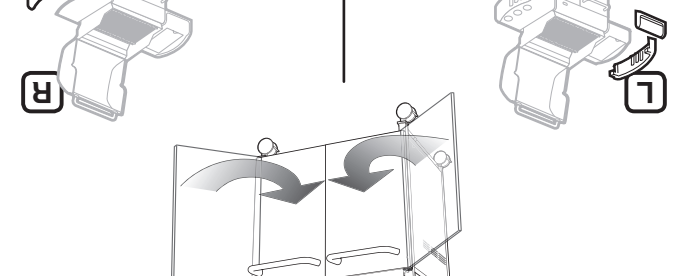
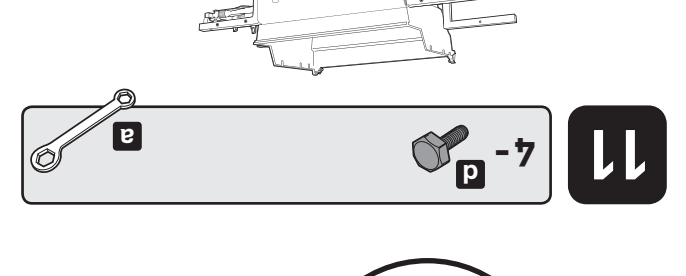
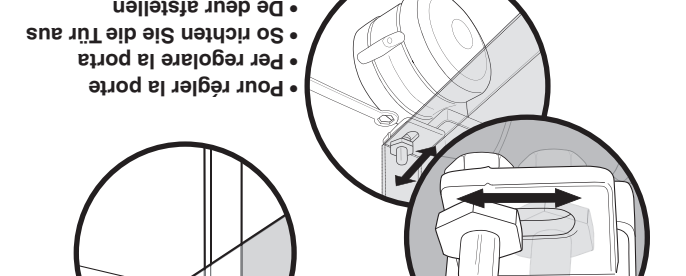
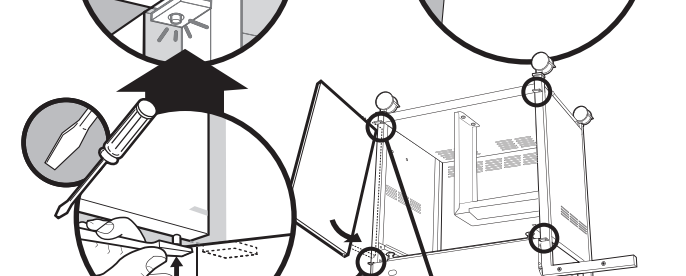
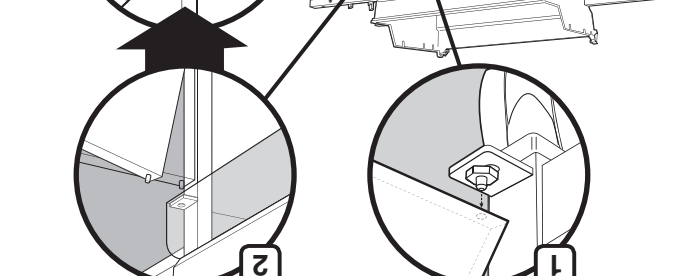
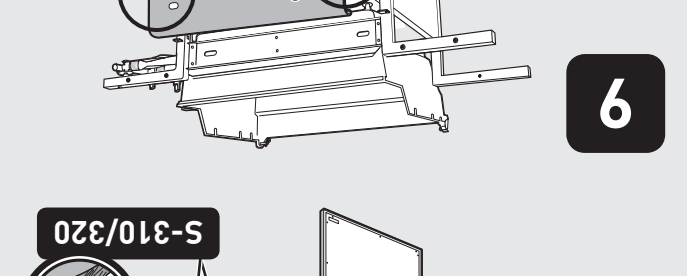
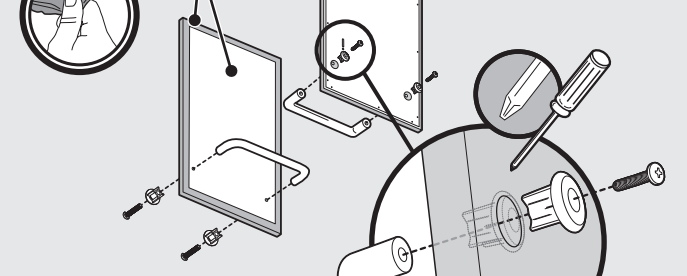
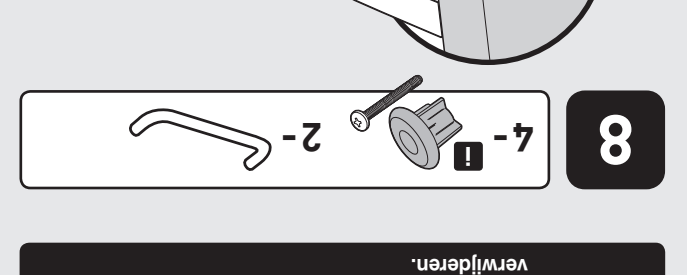
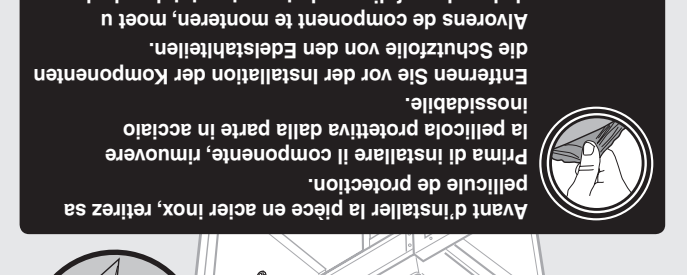
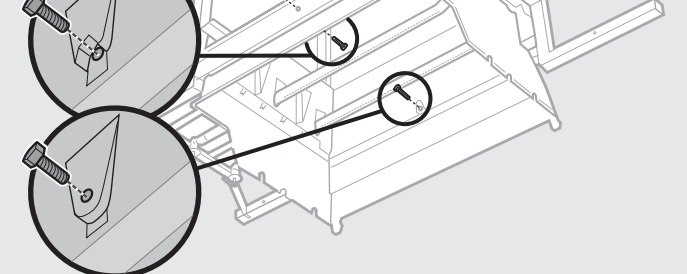
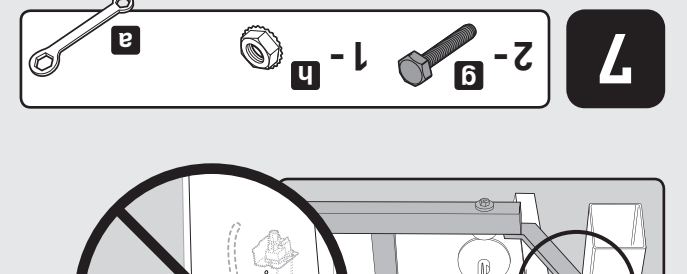
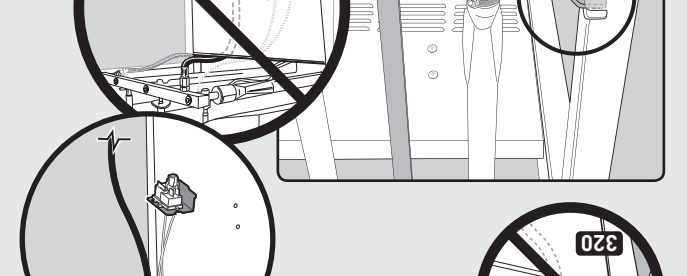
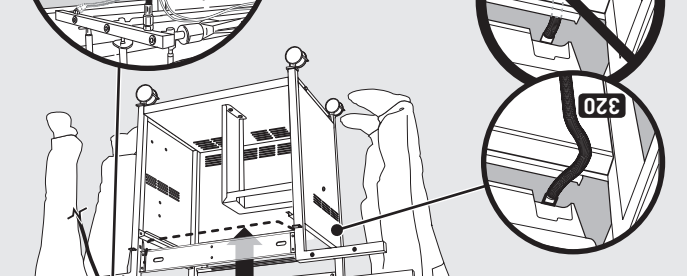
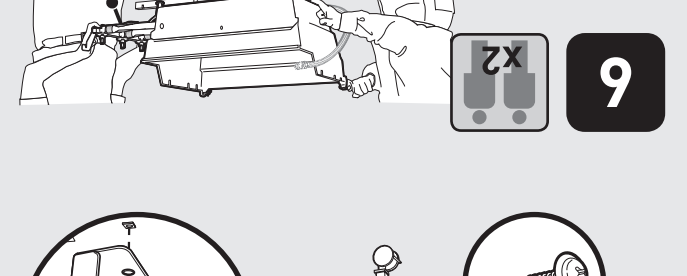
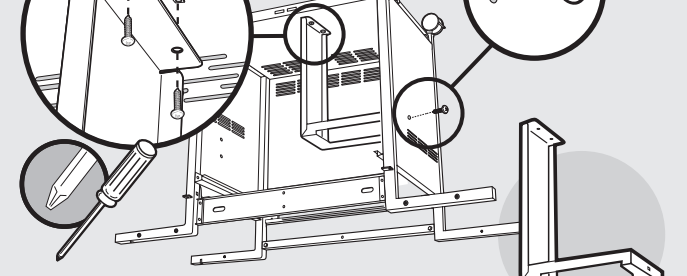
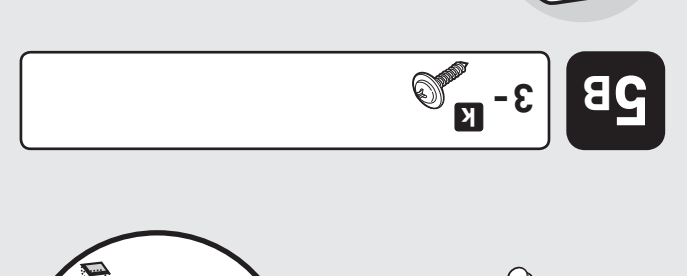
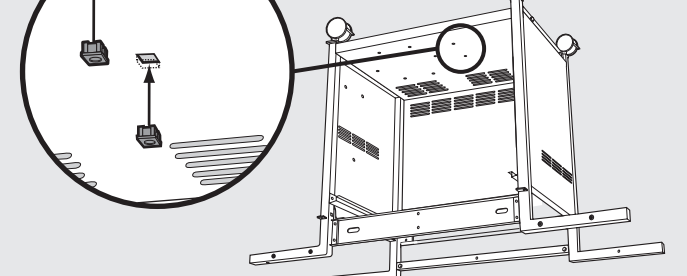
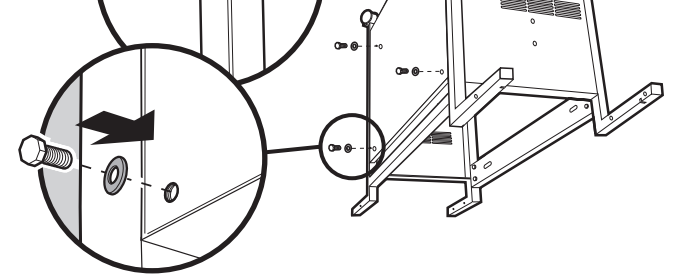
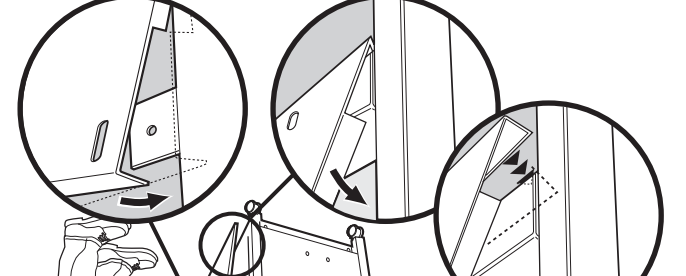
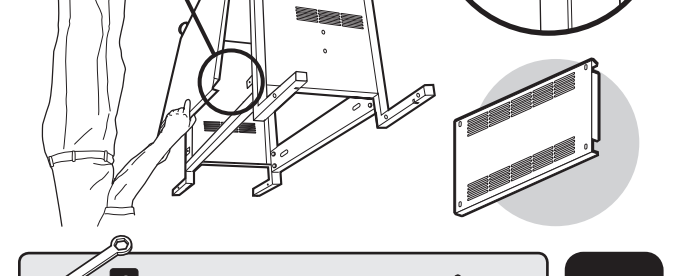
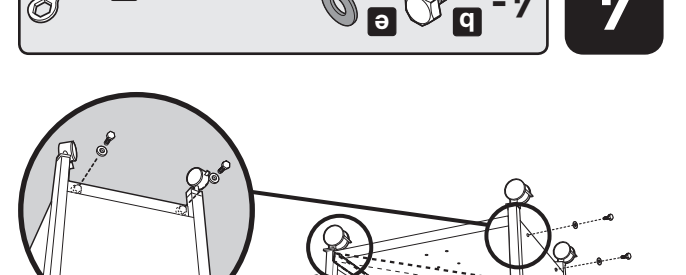
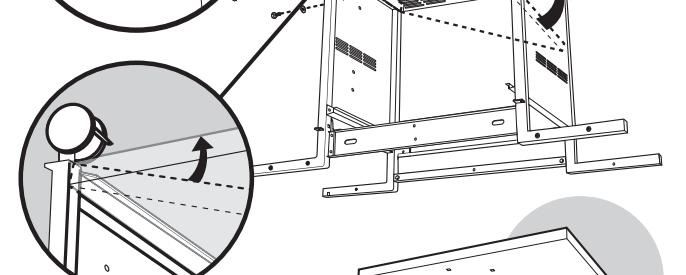
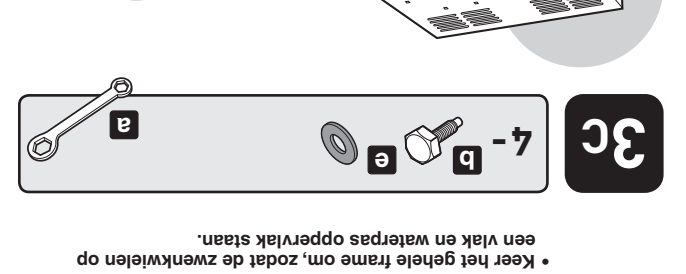
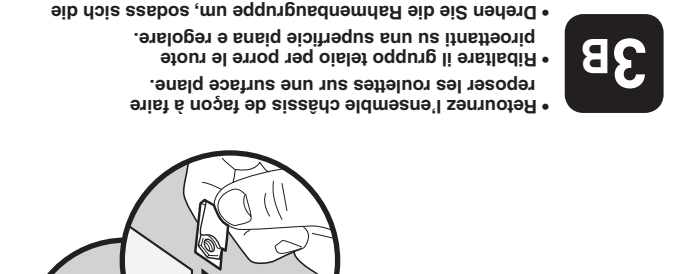
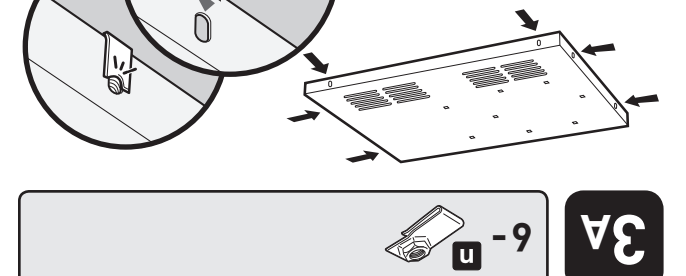
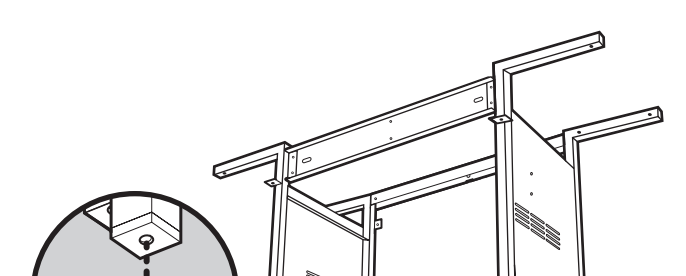
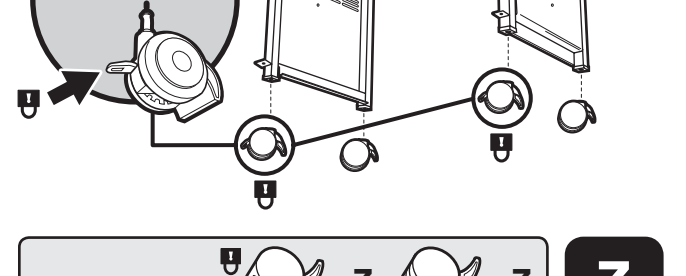
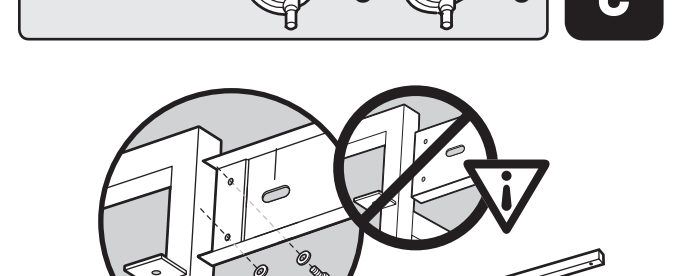
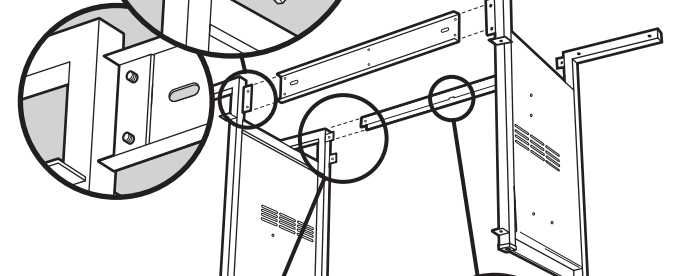
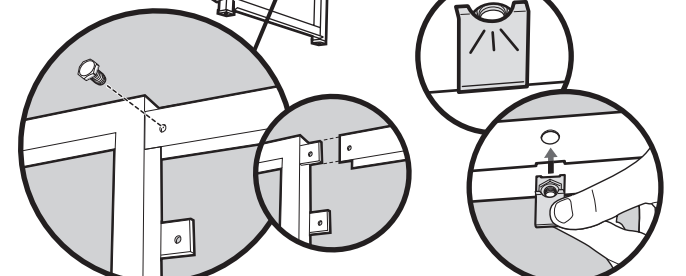
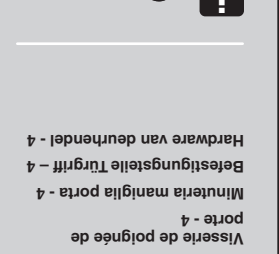
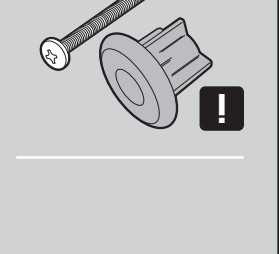
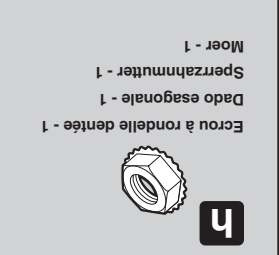
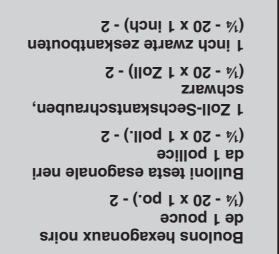
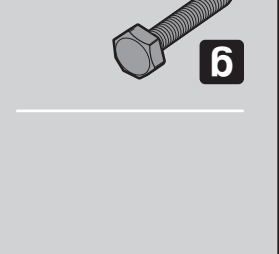
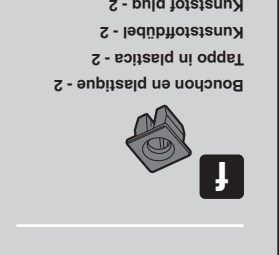
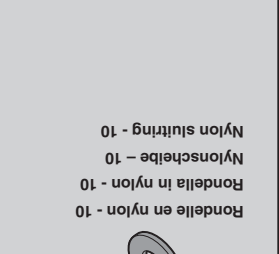
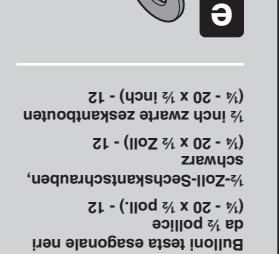
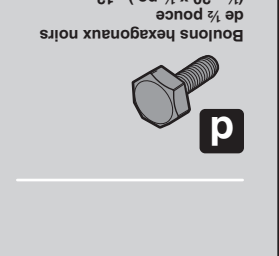
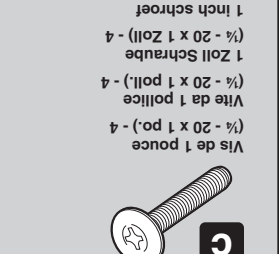
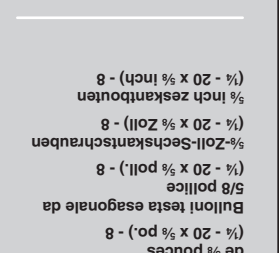
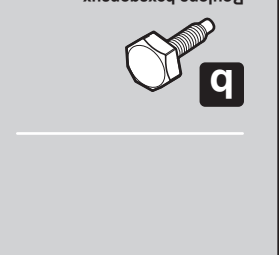
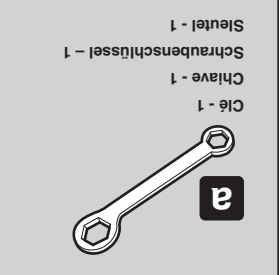
89472 08/31/09  
Group 2  
French  
Italian  
German  
Dutch

## INSTRUCTIONS DE DEBALLAGE • ISTRUZIONI DI DISIMBALLAGGIO • ANLEITUNG ZUM AUSPACKEN • UITPAK INSTRUCTIES



## INSTRUCTIONS DE MONTAGE • ISTRUZIONI DI MONTAGGIO • MONTAGEANLEITUNG • INSTALLATIE-INSTRUCTIES





Avant d'installer la pièce en acier inox, retirez sa pellicule de protection.  
Prima di installare il componente, rimuovete la pellicola protettiva dalla parte in acciaio inossidabile.  
Entfernen Sie vor der Installation der Komponenten die Schutzfolie von den Edelstahlteilen.  
Alvorens de component te monteren, moet u de beschermfolie van het roestvaststaal deel verwijderen.

Retournez l'ensemble châssis de façon à faire reposer les routes sur une surface plane.  
Ribaltate il gruppo telaio per porre le rotelle su una superficie piana e regolare.  
Drehen Sie die Rahmenbaugruppe um, sodass sich die Rollen auf einer flachen und ebenen Fläche befinden.  
Keer het gehele frame om, zodat de zwenkwielen op een vlak en waterpas oppervlak staan.

Bord oblique  
Bordo inclinato  
Gewinkelte Kante  
Gevormde hoek

Pour régler la porte  
Per regolare la porta  
So richten Sie die Tür aus  
De deur afstellen

Vis de mécanique n° 8-2-4  
Maschinenschraube - 4  
Nr. 8-2  
Vite senza dado 8-2-4

Visserie de poignée de porte - 4  
Muniteria maniglia porta - 4  
Befestigungsstelle Türgriff - 4  
Hardware van deurhendel - 4

Moer - 1  
Sperzaamutter - 1  
Dado esagonale - 1  
Eccro a rondelle dentée - 1

Boutons hexagonaux noirs  
de 1 pouce  
(1 - 20 x 1 po.) - 2  
Bulloni testa esagonale neri  
da 1 pollice  
(1 - 20 x 1 Zoll) - 2  
schwarz  
1 Zoll-Sechskantknechtrauben,  
1 Inch zwarte zeskantbouten  
(1 - 20 x 1 Zoll) - 2  
(1 - 20 x 1 inch) - 2

Bouchon en plastique - 2  
Tappo in plastica - 2  
Kunststoffplugg - 2

Rondelle in nylon - 10  
Nylon schijbe - 10  
Nylon sluitring - 10

Boutons hexagonaux noirs  
de 1/2 pouce  
(1 - 20 x 1/2 po.) - 12  
Bulloni testa esagonale neri  
da 1/2 pollice  
(1 - 20 x 1/2 Zoll) - 12  
schwarz  
1/2 Zoll-Sechskantknechtrauben,  
1/2 Inch zwarte zeskantbouten  
(1 - 20 x 1/2 inch) - 12

Vis de 1 pouce  
(1 - 20 x 1 po.) - 4  
Vite da 1 pollice  
(1 - 20 x 1 Zoll) - 4  
1 Zoll Schraube  
(1 - 20 x 1 inch) - 4

Boutons hexagonaux  
de 5/8 pouce  
(1 - 20 x 5/8 po.) - 8  
Bulloni testa esagonale da  
5/8 pollice  
(1 - 20 x 5/8 Zoll) - 8  
(1 - 20 x 5/8 inch) - 8  
1/2 Inch zeskantbouten

Cilave - 1  
Schraubenschlüssel - 1

Steuvel - 1