



COMMERCIAL



SUPER 104



AVAILABLE DECK SIZES

104" RD

SUPER 104

SmoothTrak™ Steering

Precision control to help trim and maneuver easily around obstacles. Other brands have sensitive steering arms causing sudden and jerky movements.

HyperDrive® Hydro System

Features industrial-grade pumps and motors to handle tough jobs and long days.

I3M Suspension Seat

High-back seat with adjustable armrests and 3-inch travel range.

Commercial-Grade Engines

Vanguard Big Block™ EFI with Oil Guard, Kawasaki FX1000, and FX1000 EFI engine options.

Hydraulic Deck Height Adjustment

Raising and lowering your cutting height has never been easier.

Hydraulic Wings

Easily raise and lower wings for transporting.

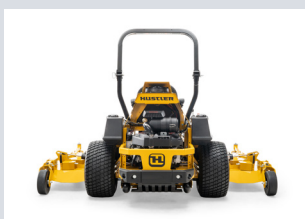


80" Transport Width

Fits most trailers making it easy to transport from job-to-job.

104" Width of Cut

Widest and most productive commercial zero-turn available



SUPER 104

- ✓ **104" Width of Cut**
Widest and most productive commercial zero-turn available.
- ✓ **80" Transport Width**
Fits most trailers making it easy to transport from job-to-job.
- ✓ **HyperDrive® Hydro System**
- ✓ **Mows a football field in under 10 minutes.**



ACCESSORIES

- ▶ Mulch kit
- ▶ Steering lever extension kit
- ▶ Light kit
- ▶ Anti-scalp kit
- ▶ Flasher kit
- ▶ Beacon kit
- ▶ Flex Forks®
- ▶ Hitch kit
- ▶ Semi-pneumatic wheel/tire
15 x 6 Black



SUPER 104

ENGINE	
Manufacturer	Vanguard, Kawasaki FX series
HP	35HP - Kawasaki FX1000 38.5HP - Kawasaki FX1000 EFI 40HP - Vanguard BIG BLOCK™ EFI w/ Oil Guard (Per SAE J1995)
Displacement	Vanguard 993 cc, 999cc Kawasaki
Cooling	Air cooled
Air Cleaner	Heavy Duty Canister
Engine Warranty	5 year Vanguard 3 year Kawasaki
DRIVE SYSTEM	
Type	Dual hydrostatic
Pumps	Danfoss DDC20
Wheel Motors	Parker TG
Hydraulic Lines	Stainless steel Parker Seal-Lok technology
Reservoir Capacity	3 gallons
Speed	Up to 11 mph
Parking Brakes	Integrated with steering levers
DECKS	
Cutting Width	Rear-discharge: 104"
Cutting Heights	1" - 5.5"
Deck Lift	Hydraulic powered
Depth	5.5"
Blades	5
Blade Length	1 - 23.86" CW 1 - 23.86" CCW 1 - 20.50" CCW 2 - 20.50" CW
Blade Tip Speed	Wing Decks: 15,800 Center Deck: 15,500
Spindles	Ductile cast iron with steel shafts and sealed ball bearings
Drive	Electric PTO clutch
Construction	11ga. welded steel
Spindle Mounts	Reinforced 7ga. doubler
Impact/Trim Areas	1.5" x .375" steel bar
CONSTRUCTION	
Frame	1.5" x 3" steel tubing
Front Axle	Fabricated with tapered roller bearings
Front Caster Wheels	Tapered wheel bearings and debris cap
Front Caster Forks	Fabricated 1/2" steel
GENERAL	
Seat	I3M suspension seat, adjustable armrests and back
Fuel Capacity	12 gallons
Cupholder	Yes
Front Tire	15 x 6.0 - 6
Drive Tire	26 x 12 - 12
Wing Tire	11 x 4 semi-pneumatic
DIMENSIONS	
Weight	2500 lbs
Height	54" 71.5" w/ ROPs
Length	95.5"
Width	106.1" wings down, 80.0" wings up at gauge wheels, 72.5" wings up at deck base
Tire Width	60.3"
Trim Side	23.2"
PRODUCTIVITY*	
Acres Per Hour	9.24

* Number based on 80% efficiency. This rating is to account for actual mowing conditions including overlapping, turning and terrain.

** Specifications are subject to change without notice.