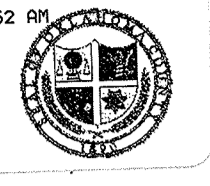
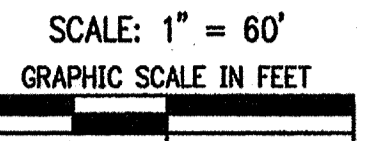


20150302010251000
 Filing Fee = \$30.00
 03/02/2015 10:16:52 AM
 PLAT



FINAL PLAT OF KINGSBURY RIDGE 2nd ADDITION

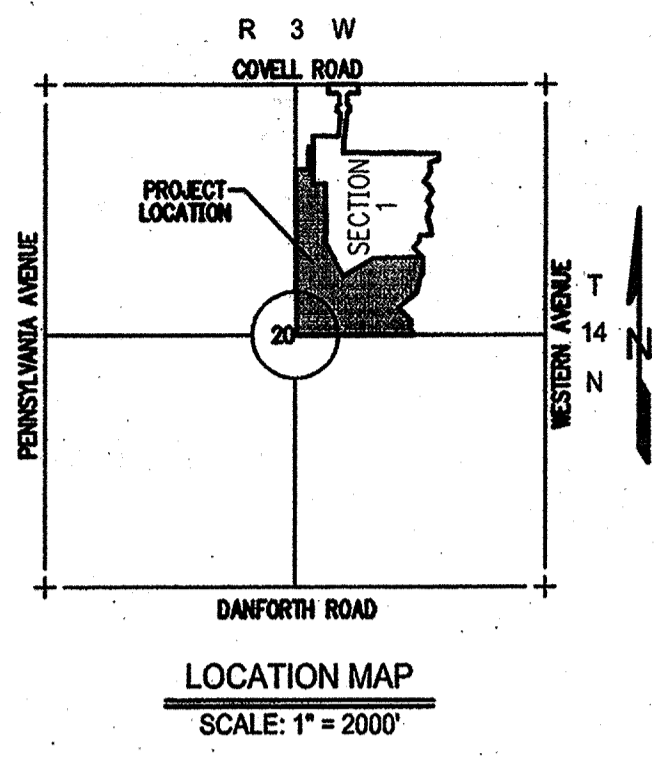
A PART OF THE NE/4 OF SECTION 20, T14N, R3W, I.M.
 EDMOND, OKLAHOMA COUNTY, OKLAHOMA



SCALE: 1" = 60'
 GRAPHIC SCALE IN FEET

BASIS OF BEARING = S89°50'51"E
 NORTH LINE OF NE/4, SEC 20, T14N, R4W, I.M.
 EDMOND, OKLAHOMA COUNTY

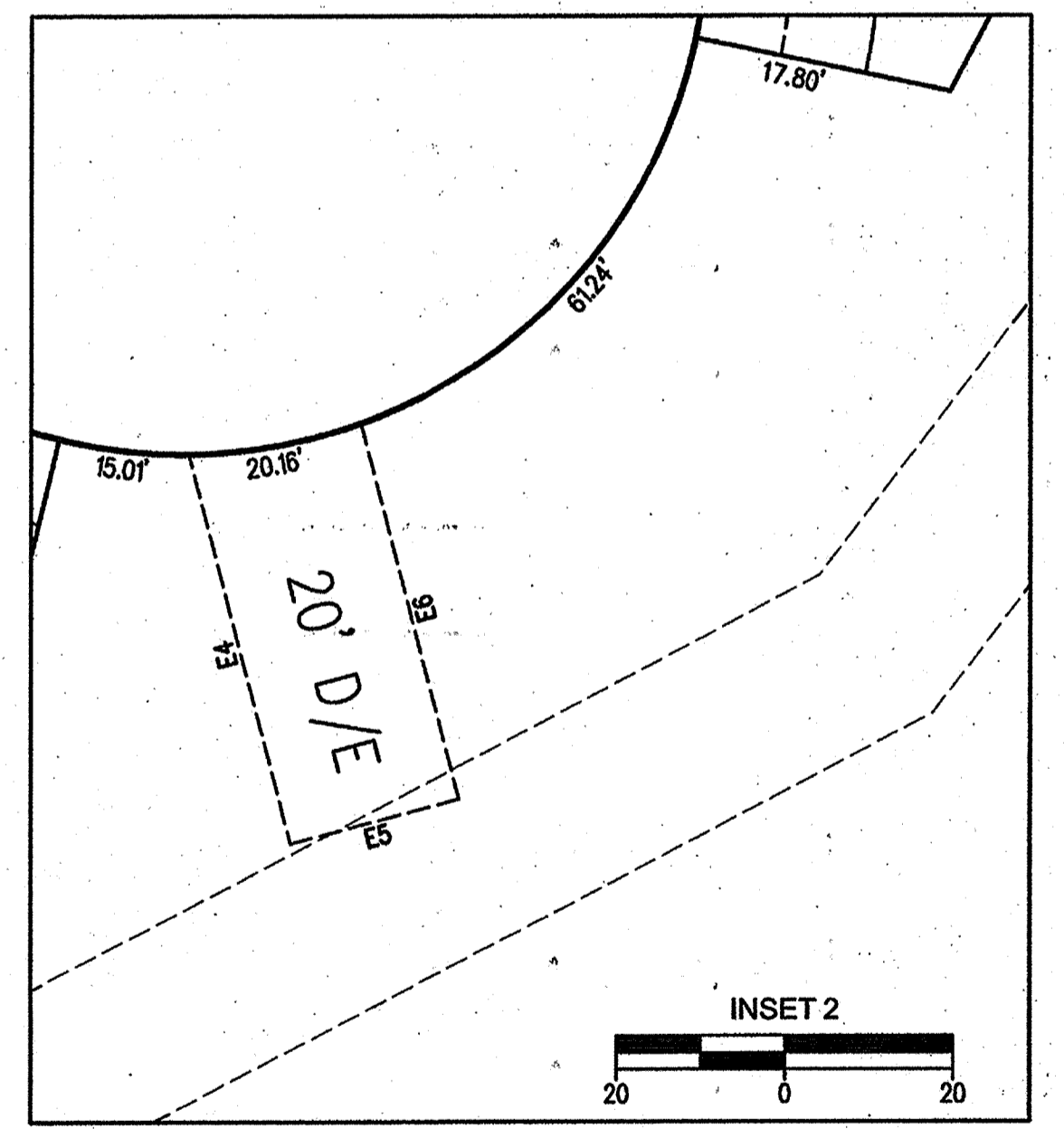
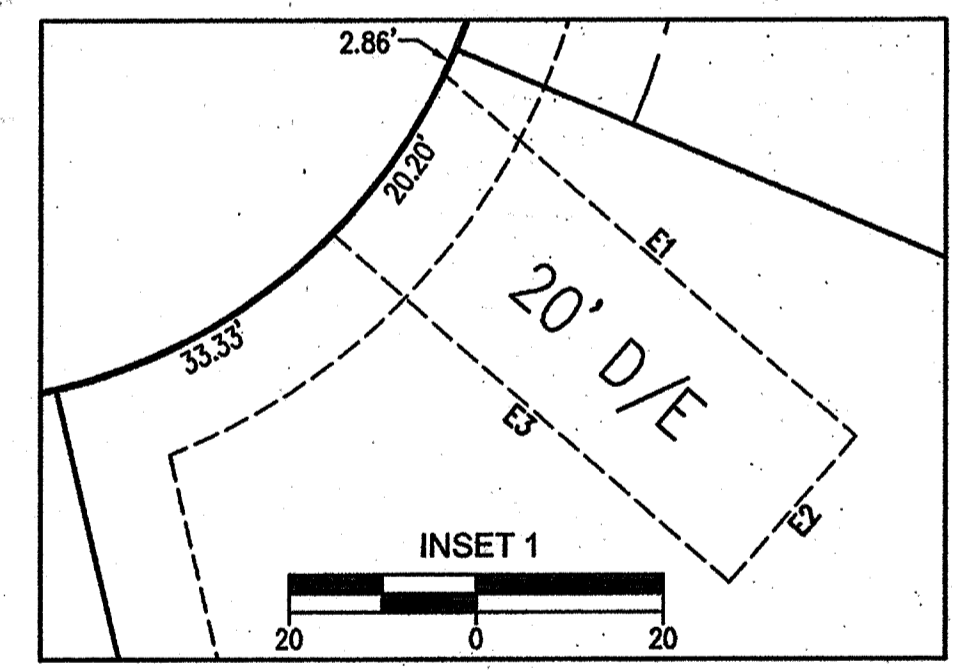
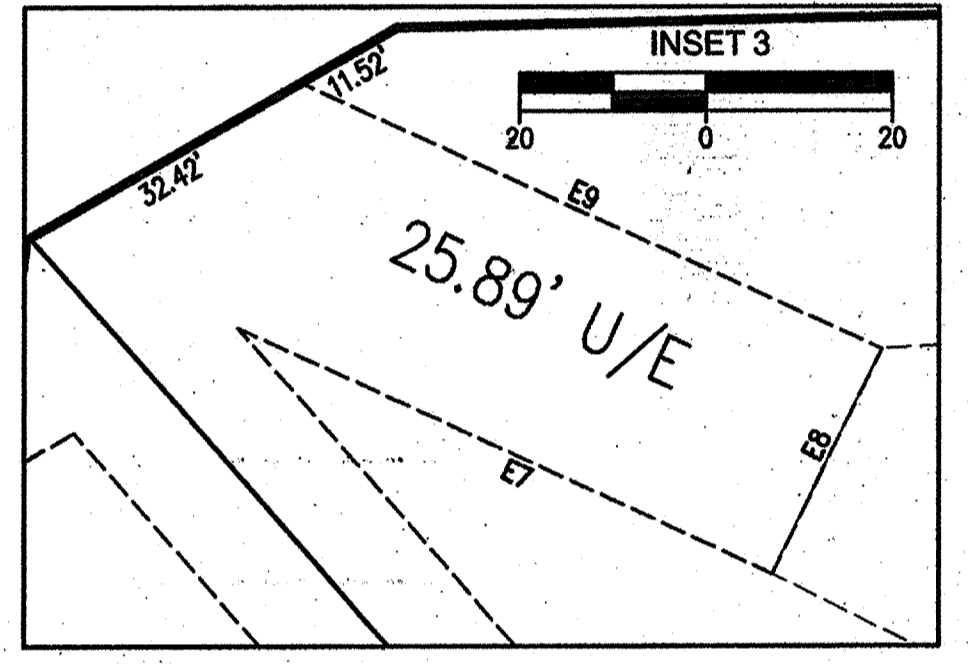
LEGEND	
BL	BUILDING LIMIT LINE
D/E	DRAINAGE EASEMENT
EX	EXISTING
(NR)	NONRADIAL LINE
R.O.W.	RIGHT-OF-WAY
U/E	UTILITY EASEMENT
(TO ML)	TO MATCH LINE



CURVE TABLE						
CURVE #	LENGTH	RADIUS	DELTA	CHORD DIRECTION	CHORD LENGTH	
C9	20.94'	35.00'	34°16'40"	N16° 46' 45"E	20.63'	
C10	291.51'	60.00'	278°22'31"	N74° 43' 49"E	78.43'	
C11	39.15'	35.00'	64°05'51"	S32° 24' 31"E	37.14'	
C12	51.05'	100.00'	29°14'53"	N75° 00' 58"E	50.50'	
C13	38.29'	75.00'	29°14'53"	N75° 00' 58"E	37.87'	
C14	63.81'	125.00'	29°14'53"	N75° 00' 58"E	63.12'	
C15	136.55'	100.00'	78°14'05"	N80° 29' 26"W	126.18'	
C16	170.68'	125.00'	78°14'05"	N80° 29' 26"W	157.73'	
C17	102.41'	75.00'	78°14'05"	N80° 29' 26"W	94.64'	
C18	266.77'	60.00'	254°44'34"	N85° 58' 52"E	95.37'	
C19	45.66'	35.00'	74°44'33"	N04° 00' 07"W	42.49'	
C20	45.66'	35.00'	74°44'33"	S66° 58' 45"E	42.49'	
C21	266.77'	60.00'	254°44'32"	N23° 01' 15"E	95.37'	
C22	71.90'	140.00'	29°25'37"	N74° 55' 36"E	71.12'	
C23	59.06'	115.00'	29°25'37"	N74° 55' 36"E	58.42'	
C24	84.74'	165.00'	29°25'37"	N74° 55' 36"E	83.81'	

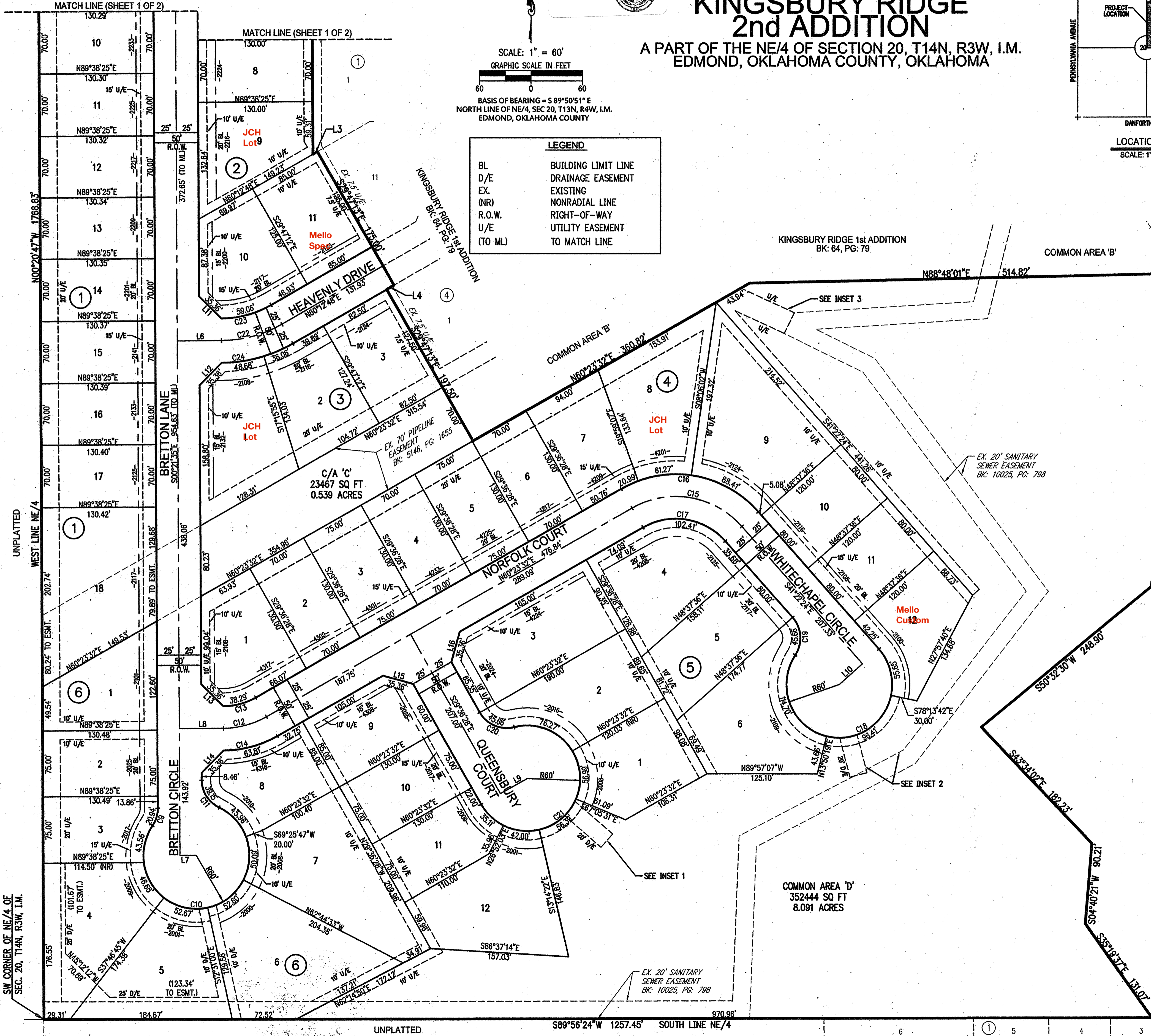
LINE TABLE		
LINE #	LENGTH	DIRECTION
L3	5.74'	N60° 12' 47"E
L4	9.54'	S60° 12' 47"W
L6	50.00'	N89° 38' 25"E
L7	18.50'	N89° 38' 25"E
L8	50.00'	N89° 38' 25"E
L9	35.00'	N60° 23' 32"E
L10	35.00'	N48° 37' 36"E
L11	35.36'	S45° 21' 35"E
L12	35.36'	S44° 38' 25"W
L13	35.36'	S44° 21' 35"E
L14	35.36'	S44° 38' 25"W
L15	35.36'	N74° 36' 28"W
L16	35.36'	S15° 23' 32"W

EASEMENT LINE TABLE		
LINE #	LENGTH	DIRECTION
E1	56.81'	S48° 53' 03"E
E2	20.00'	S41° 06' 57"W
E3	54.77'	N48° 53' 03"W
E4	45.92'	N14° 46' 19"W
E5	20.00'	S75° 13' 41"W
E6	44.30'	S14° 46' 19"E
E7	61.24'	S65° 27' 19"E
E8	25.89'	N26° 13' 22"E
E9	66.61'	S65° 27' 19"E



NOTES

- THIS PLAT OF SURVEY MEETS THE OKLAHOMA MINIMUM STANDARDS FOR THE PRACTICE OF LAND SURVEYING AS ADOPTED BY THE OKLAHOMA STATE BOARD OF REGISTRATION FOR PROFESSIONAL ENGINEERS AND LAND SURVEYORS, AND THAT SAID FINAL PLAT COMPLIES WITH THE REQUIREMENTS OF TITLE 11 SECTION 41-108 OF THE OKLAHOMA STATE STATUTES.
- CENTERLINE OF ROADWAY MONUMENTS SHALL BE AS FOLLOWS:
 MAGNETIC NAILS WITH WASHER STAMPED "CTA CA973"
- PROPERTY CORNER MONUMENTS SHALL BE:
 3/8" IRON RODS WITH A PLASTIC CAP STAMPED "CTA CA973"



FINAL PLAT TO SERVE
 KINGSBURY RIDGE 2nd ADDITION

214 E. Main
 Oklahoma City, Oklahoma 73104

Crafton Tull
 architecture | engineering | surveying
 405.787.4270 | 405.787.4276 | www.craftontull.com

SHEET NO.:	2 of 2
DATE:	01/15/15
PROJECT NO.:	14600500

COURTESY OF AUTOMATION
 CA 973 (P&E) EXPIRES 4/30/2016