

SCANNER NOTE:

This file was received with pages that may have the following conditions: Areas that appear to have information cut off, extremely light text or handwriting, broken text, thin onion skins, torn, lines, skewed, or dark bands of ink.

ORDINANCE NO. 06-39 AC CMS

AN ORDINANCE AMENDING ORDINANCE NO. 04-12 AC CMS THAT ACCEPTED THE BID OF NERONE & SONS., OF WARRENSVILLE HEIGHTS, OHIO, FOR IMPROVEMENTS TO THE EQUALIZATION BASIN AT THE CITY OF OBERLIN WATER ENVIRONMENT PROTECTION FACILITY AND DECLARING AN EMERGENCY

BE IT ORDAINED by the Council of the City of Oberlin, County of Lorain, State of Ohio, five-sevenths (5/7ths) of all members elected thereto concurring:

SECTION 1. That Ordinance No. 04-12 AC CMS, which accepted the bid of Nerone & Sons of Warrensville Heights, Ohio, for improvements to the Equalization Basin at the City of Oberlin Water Environment Protection Facility, is hereby amended in accordance with "Change Order 2", a copy being attached hereto and incorporated herein by reference, to authorize additional compensation for additional work that was determined to be necessary during the course of construction, in the net amount of \$90,780.00.

SECTION 2. It is hereby found and determined that all formal actions of this Council concerning or relating to the adoption of this ordinance were adopted in an open meeting of this Council, and that all deliberations of this Council and of any of its committees that resulted in such formal action, were in meetings open to the public in compliance with all legal requirements, including Section 121.22 of the Ohio Revised Code.

SECTION 3. That this ordinance is hereby declared to be an emergency measure necessary for the preservation of the public peace, health and safety of the citizens of the City of Oberlin, Ohio, or to provide for the usual daily operation of a municipal department to wit:

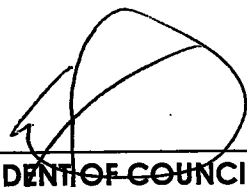
"to authorize necessary additional construction work at a project in progress in order to avoid further delays",

and shall take effect immediately upon passage.

PASSED: 1st Reading – April 17, 2006 (E)
2nd Reading –
3rd Reading –

ATTEST:


CLERK OF COUNCIL


PRESIDENT OF COUNCIL

POSTED: April 18, 2006

EFFECTIVE DATE: April 18, 2006

a:/ORD06-Nerone.ChangeOrder

City of Oberlin

85 South Main St. Oberlin, OH 44074

Public Works Department

April 10, 2006

TO: Rob DiSpirito, City Manager
FROM: Jeff Baumann, Public Works Director
RE: Nerone & Sons Change order



You will recall that City Council passed Ordinance 05-92 which authorized additional funding to the Camp, Dresser, McKee (CDM) contract to design necessary improvements to the manhole interconnecting the two equalization basins at the Water Environment Protection Facility (WEPF). The manhole is leaking around the connecting pipes and this has allowed flow underneath the liners in each basin with considerable erosion in the new EQ basin.

CDM has designed these improvements which include filling underground void(s) around the manhole, lining the manhole and repair of the erosion problem in the new EQ basin. CDM has solicited pricing for this scope of work under our existing contract with Nerone & Sons. The total cost is \$90,780. This would be the second change order to the Nerone & Sons contract. The first, Ordinance 05-05, authorized the installation of a sump pump to drain water accumulating beneath the new slab in the old EQ basin.

A copy of the memorandum from Ed St. John of CDM is attached.

From the Public Works Department's viewpoint, this is expected to be the final construction change order related to the most recent round of improvements at the WEPF.

I recommend passage on emergency to allow for the construction work to begin as soon as possible. Mr. St. John will be in attendance at the April 17th Council meeting to answer any questions which may arise.

Cc: Maria Wossilek, WEPF Superintendent



1100 Superior Avenue
Suite 620
Cleveland, Ohio 44114
Phone: (216) 579-0404
Fax: (216) 579-0414

MEMORANDUM

To: Jeff Baumann, City of Oberlin
Maria Wossilek, City of Oberlin

From: Ed St. John, P.E.

Subject: Oberlin Old EQ Basin Improvements Contract – Change Order 2 - Items 2.1 through 2.9 (Nerone & Sons, Inc.)

Date: 7 April 2006

File: 20653 - 33976

No. of Pages: 2

The purpose of this memorandum is to describe each item in Change Order 2 and to identify associated costs. This change order increases the scope of work of the above referenced Contract and warrants additional compensation to the Contractor – Nerone & Sons, Inc. (Nerone). Support documentation and Contractor's cost estimates are attached to this memo. Authorization of Change Order 2 by the Oberlin City Council is anticipated on April 17, 2006.

2.1 – Mobilization – This item covers mobilization, demobilization, bonding, insurance, additional labor for project management and superintendence, and restoration work. The cost for this item is \$16,700.00.

2.2 – Access Road (Bid Item 1) – A temporary road is required for the contractor to access the work area with heavy equipment. The road will consist of gravel and geofabric and steel plating in high traffic areas adjacent to the New EQ Basin. The steel plates and gravel will be removed when the work is completed and the area will be reseeded and restored. The cost for this item is \$4,665.00.

2.3 – Underground Void Grouting (Bid Item 2) – A hole in the bottom of the existing EQ basin manhole has caused soil erosion around the manhole. The cost for this item will cover pumping grout into the void to provide stability and reduce the risk of sinkholes. The cost for this item is \$15,600.00.

2.4 – Manhole Re-Lining (Bid Item 3) – The EQ manhole between the New and Old EQ Basins has a hole in the bottom and suspect leaky joints between the concrete manhole sections. This item will cover plugging the hole and lining the manhole with a durable sealant. **The cost for this item is \$5,445.00.**

2.5 – Liner Replacement (Bid Item 4) – To access the eroded area beneath the existing liner in the New EQ Basin and to excavate around the concrete headwall in the New EQ Basin, it is necessary to remove sections of the existing liner. The cost for this item covers the replacement of the liner section removed. **The cost for this item is \$14,022.50.**

2.6 – Geocomposite Replacement (Bid Item 5) – Beneath the liner section mentioned in Item 2.5 is a geocomposite that must also be removed to access the subgrade below. The cost for this item covers the replacement of the geocomposite section removed. **The cost for this item is \$7,987.50.**

2.7 – Concrete Slab (Bid Item 6) – A concrete slab is needed to support the concrete headwall in the New EQ Basin that is sinking due to soil erosion beneath the liner. The surrounding liner will be connected to the concrete slab by welding it to an embedded plastic channel within the slab. **The cost for this item is \$17,156.25.**

2.8 – Grout Fill Void Beneath Liner (Bid Item 7) – Soil erosion beneath the liner has created a void along the slope of the New EQ Basin adjacent to the EQ manhole. The void needs to be filled to stop erosion and prevent the risk of compromising the liner's integrity. **The cost for this item is \$3,937.50.**

2.9 – New Liner Section in Old EQ Basin – The HDPE liner in the Old EQ Basin has a smooth texture which makes walking on the sloped section difficult. Maintenance access is periodically needed to the overflow box structure in the Old EQ Basin which is surrounded by the smooth liner material. This item covers the installation of a section of rough textured HDPE liner material and attaching it to the existing liner around the overflow box structure. **The cost for this item is \$5,266.25.**

The total cost for Change Order 2 = \$90,780.00

SECTION 01025

MEASUREMENT AND PAYMENT – CHANGE ORDER 2 – NEW EQ BASIN WORK

PART 1 GENERAL

1.01 SCOPE OF WORK

- A. The amounts bid shall include costs for all labor, materials, equipment, supplies, permits, fees, taxes, insurance, bonds, record drawings, scheduling, compliance with Safety and Health Requirements of the State of Ohio and the Occupational Safety and Health Administration of the U.S. Department of Labor (OSHA), other miscellaneous costs, overhead and profit to complete the Work in its entirety in a manner as specified in Divisions 1 through 15, and as shown on the Contract Drawings.
- B. Contractor shall note the following:
 - 1. Bid Item No. 4 – Manhole Re-Lining will be performed only if approved by Owner after the EQ manhole is patched and the manhole is tested by Owner.
 - 2. Either Bid Item No. 8 – Grout Fill or Bid Item No. 9 – Clay Fill will be performed.
 - 3. Bid Item No. 10 – New Liner Section in Old EQ Basin will be performed only if approved by Owner.

1.02 ACCESS ROAD (Bid Item No. 1)

A. Measurement and Payment

The Measurement for Access Road shall be on a lump sum basis, in the accordance with the approved schedule of values. The lump sum price stipulated for Access Road shall be in full compensation for furnishing all labor, equipment, materials, and superintendence necessary for the clearing, grubbing, excavation, and installation of the geofabric, Nos. 1 and 2 stone, No. 304 stone; and the furnishing and installation of all accessory and appurtenant materials, drawings, tools, appliances, and equipment necessary to complete the work as specified, shown on the Contract Drawings, or as required for the proper completion of the installation.

1.03 UNDERGROUND VOID GROUTING (Bid Item No. 2)

A. Measurement and Payment

The Measurement for Underground Void Grouting shall be for the actual number of cubic yards of grout or lean concrete fill material needed to fill the void adjacent to the EQ manhole. Payment for this item will be made at the unit price in the Bid Form, which price shall include, but not be limited to furnishing and installation of all accessory and appurtenant materials, drawings, tools, appliances, and equipment necessary to complete the work as specified, shown on the Contract Drawings, or as required for the proper completion of the installation.

1.04 MANHOLE PATCHING (Bid Item No. 3)

A. Measurement and Payment

The Measurement for Manhole Patching shall be on a lump sum basis, in the accordance with the approved schedule of values. The lump sum price stipulated for Manhole Patching shall be in full compensation for furnishing all labor, equipment, materials, and superintendence necessary for repairing the ½-inch diameter hole located in the bottom of the EQ manhole; and the furnishing and installation of all accessory and appurtenant materials, drawings, tools, appliances, and equipment necessary to complete the work as specified, shown on the Contract Drawings, or as required for the proper completion of the installation.

1.05 MANHOLE RE-LINING (Bid Item No. 4)

A. Measurement and Payment

The Measurement for Manhole Re-Lining shall be on a lump sum basis, in the accordance with the approved schedule of values. The lump sum price stipulated for Manhole Re-Lining shall be in full compensation for furnishing all labor, equipment, materials, and superintendence necessary for re-lining of the EQ manhole if deemed necessary upon completion of testing performed by the Owner after the EQ manhole has been patched. The Manhole Re-Lining will also include all furnishing and installation of all accessory and appurtenant materials, drawings, tools, appliances, and equipment necessary to complete the work as specified, shown on the Contract Drawings, or as required for the proper completion of the installation.

1.06 LINER REPLACEMENT (Bid Item No. 5)

A. Measurement and Payment

The Measurement for Liner Replacement shall be for the actual number of square feet of 60-mil textured HDPE liner material needed to replace the liner removed. Payment for this item will be made at the unit price in the Bid Form, which price shall include, but not be limited to furnishing of all material, labor, and superintendence necessary for the proper installation of the textured 60-mil HDPE liner on the New EQ basin sloped embankment and around the new concrete slab; attachment of the existing and new liner to the embedded HDPE channel within the slab at the New EQ basin; and the furnishing and installation of all accessory and appurtenant materials, drawings, tools, appliances, and equipment necessary to complete the work as specified, shown on the Contract Drawings, or as required for the proper completion of the installation.

1.07 GEOCOMPOSITE REPLACEMENT (Bid Item No. 6)

A. Measurement and Payment

The Measurement for Geocomposite Replacement shall be for the actual number of square feet of geocomposite material needed to replace the geocomposite removed. Payment for this item will be made at the unit price in the bid form, which price shall include, but not be limited to furnishing of all material, labor, and superintendence necessary for the proper installation of the geocomposite beneath the new liner on the New EQ basin sloped embankment and around the new concrete slab; and the furnishing and installation of all accessory and appurtenant materials,

drawings, tools, appliances, and equipment necessary to complete the work as specified, shown on the Contract Drawings, or as required for the proper completion of the installation.

1.08 CONCRETE SLAB (Bid Item No. 7)

A. Measurement and Payment

The Measurement for Concrete Slab shall be on a lump sum basis, in the accordance with the approved schedule of values. The lump sum price stipulated for Concrete Slab shall be in full compensation for furnishing of all material, labor, and superintendence necessary for the proper placement of the new concrete slab around the headwall in the New EQ Basin; the lump sum price shall include all concrete and reinforcing steel necessary for the new concrete slab, stone, HDPE channels; and the furnishing and installation of all accessory and appurtenant materials, drawings, tools, appliances, and equipment necessary to complete the work as specified, shown on the Contract Drawings, or as required for the proper completion of the installation.

1.09 GROUT FILL (Bid Item No. 8)

A. Measurement and Payment

The Measurement for Grout Fill shall be for the actual number of cubic yards of grout or lean concrete fill material needed to fill the void beneath the New EQ Basin's HDPE liner from the EQ manhole, down the sloping embankment, and around the existing headwall. Payment for this item will be made at the unit price in the Bid Form, which price shall include, but not be limited to furnishing and installation of all accessory and appurtenant materials, drawings, tools, appliances, and equipment necessary to complete the work as specified, shown on the Contract Drawings, or as required for the proper completion of the installation.

1.10 CLAY FILL (Bid Item No. 9)

A. Measurement and Payment

The Measurement for Clay Fill shall be for the actual number of cubic yards of clay soil needed to fill the void beneath the New EQ Basin's HDPE liner from the EQ manhole, down the sloping embankment, and around the existing headwall. Payment for this item will be made at the unit price in the Bid Form, which price shall include, but not be limited to furnishing and installation of all accessory and appurtenant materials, drawings, tools, appliances, and equipment necessary to complete the work as specified, shown on the Contract Drawings, or as required for the proper completion of the installation.

1.11 NEW LINER SECTION IN OLD EQ BASIN (Bid Item No. 10)

A. Measurement and Payment

The Measurement for New Liner Section in Old EQ Basin shall be for the actual number of square feet of 60-mil textured HDPE liner material needed for access to and around the overflow structure. Payment for this item will be made at the unit price in the bid form, which price shall include, but not be limited to furnishing of all material, labor, and superintendence necessary for the proper installation of the textured 60-mil HDPE liner section in the Old EQ Basin from the top of the sloped embankment to down and around the overflow structure; and the furnishing and

installation of all accessory and appurtenant materials, drawings, tools, appliances, and equipment necessary to complete the work as specified, shown on the Contract Drawings, or as required for the proper completion of the installation.

PART 2 PRODUCTS (NOT USED)

PART 3 EXECUTION (NOT USED)

END OF SECTION 01025

BID FORM: OBERLIN WEPF - OLD EQUALIZATION BASIN IMPROVEMENTS PROJECT - CHANGE ORDER 2 - NEW EQ BASIN WORK

This is a "Unit Price" bid and the amount entered for each Item will be considered as "PRICE PER UNIT" and will be so computed. On each estimated quantity item, the "TOTAL AMOUNT BID" must equal "UNIT PRICE BID" multiplied by the "ESTIMATED QUANTITY". For example, if the quotation "UNIT PRICE BID" is \$5/Unit and the "ESTIMATED QUANTITY" is 1000 Units, the "TOTAL AMOUNT BID" will be \$5,000. In case of discrepancy, the "UNIT PRICE BID" shall be considered as the intent of the Bidder.

ITEM NUMBER	ESTIMATED QUANTITY	DESCRIPTION	UNIT	UNIT PRICE BID		TOTAL AMOUNT BID	
				DOLLARS	CENTS	DOLLARS	CENTS
1	1	Access Road	LUMP SUM				
2	52	Underground Void Grouting	CUBIC YARDS				
3	1	Manhole Patching	LUMP SUM				
4	1	Manhole Re-Lining	LUMP SUM				
5	1775	Liner Replacement	SQUARE FEET				
6	1775	Geocomposite Replacment	SQUARE FEET				
7	1	Concrete Slab	LUMP SUM				
8	25	Grout Fill Void Beneath Liner	CUBIC YARDS				
9	25	Clay Fill Void Beneath Liner	CUBIC YARDS				
10	275	New Liner Section in Old EQ Basin	SQUARE FEET				
To complete "Unofficial Total" multiply Unit Price Bid on those items having estimated quantities and units, by the estimated quantity, add to Lump Sum prices for bid for other items and to the cost of Performance and Labor and Material Bonds. The total thus computed is for convenience in comparing bids and will be used for that purpose only.				UNOFFICIAL TOTAL =			

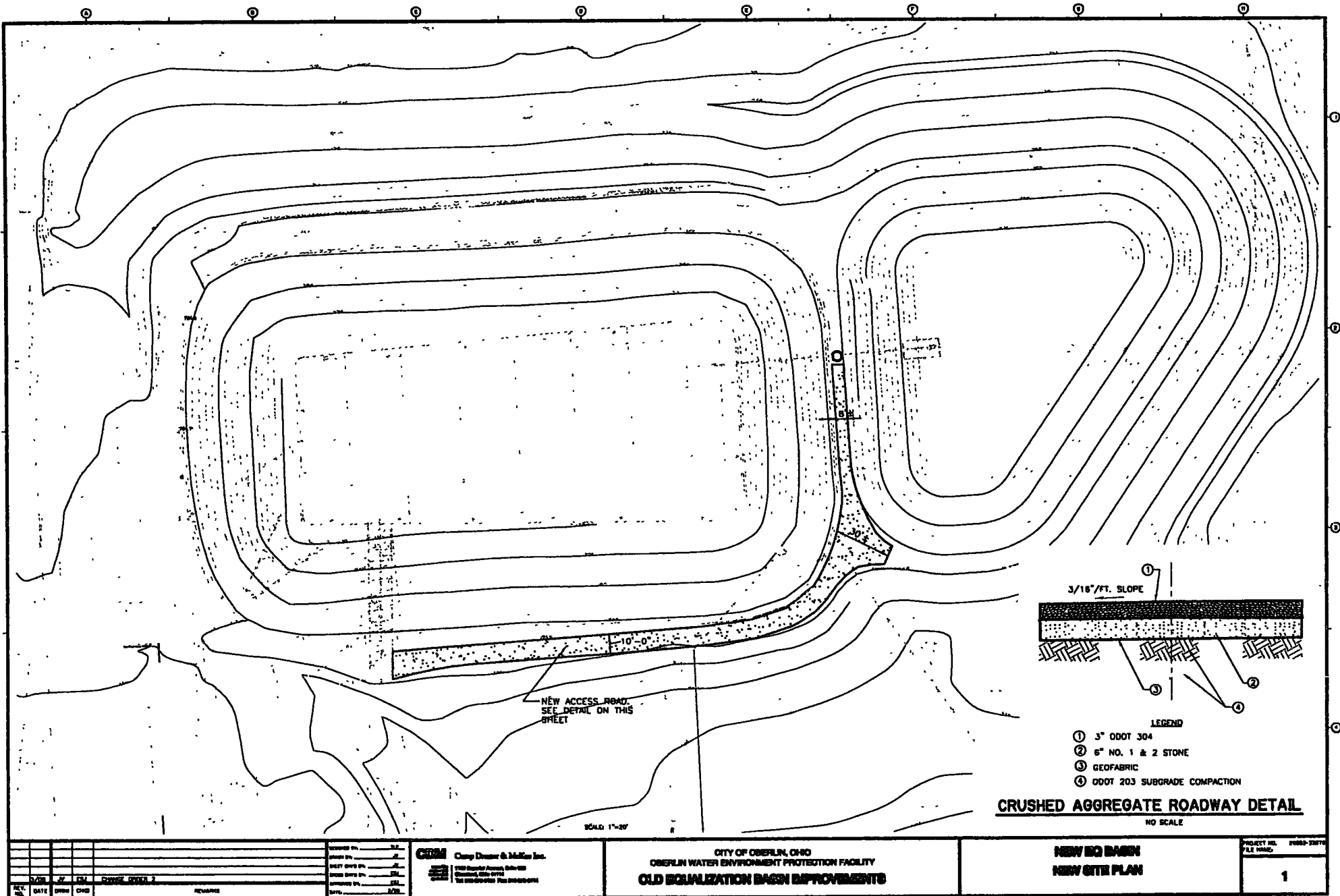
The undersigned agrees that extra work, if any, will be performed in accordance with and will be paid for in accordance with the Conditions of the Contract.

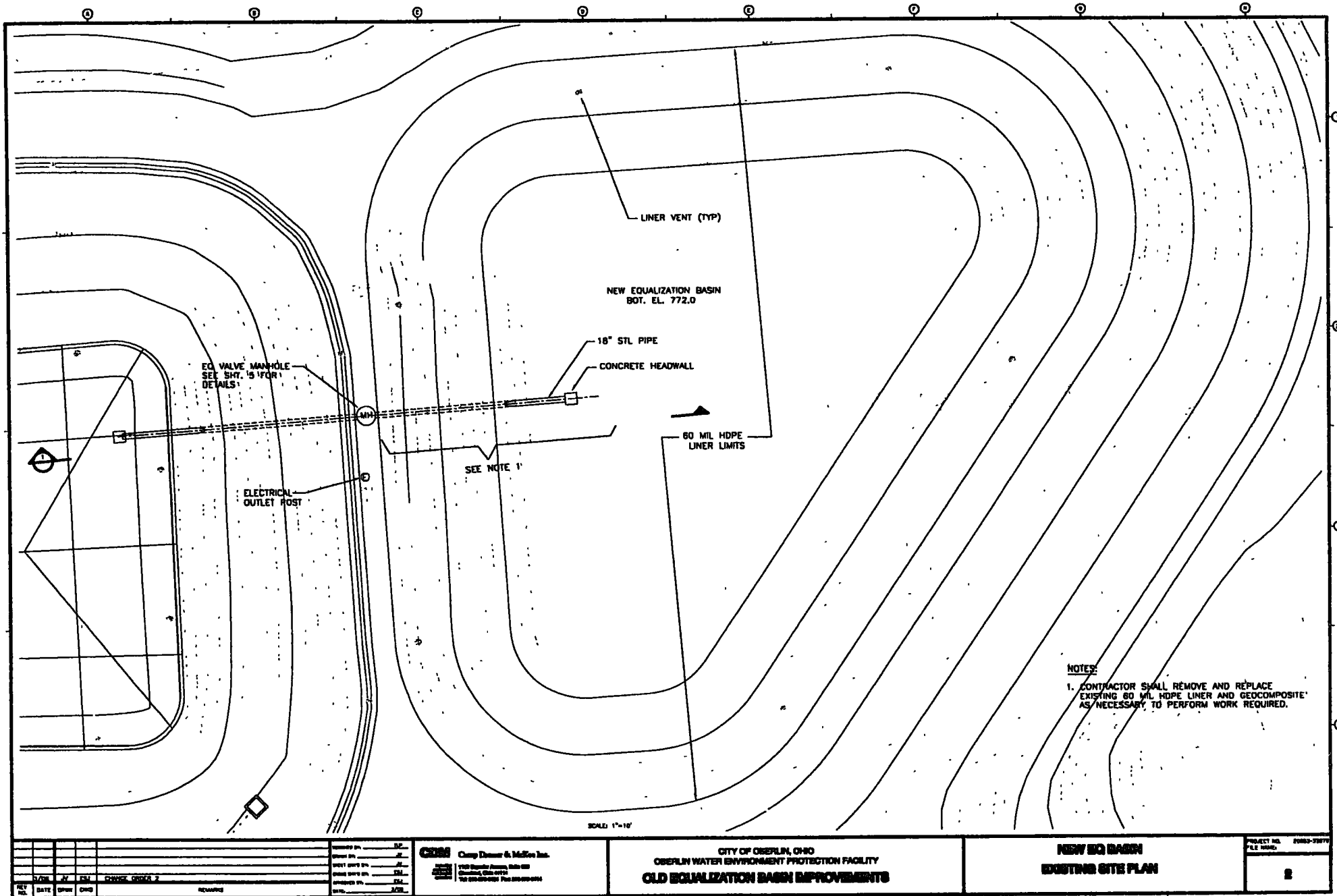
The above prices shall include all labor, materials, mobilization, demobilization, shoring, demolition, overhead, profit, insurance, bonds, and incidentals required to complete the Work.

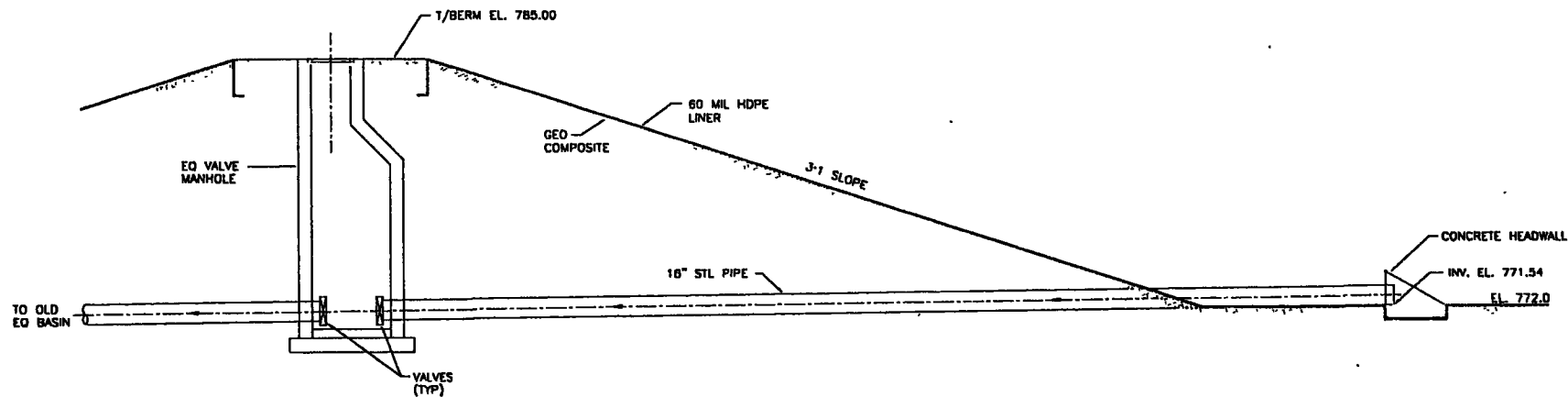
BIDDER: _____
(Signature)

TITLE: _____

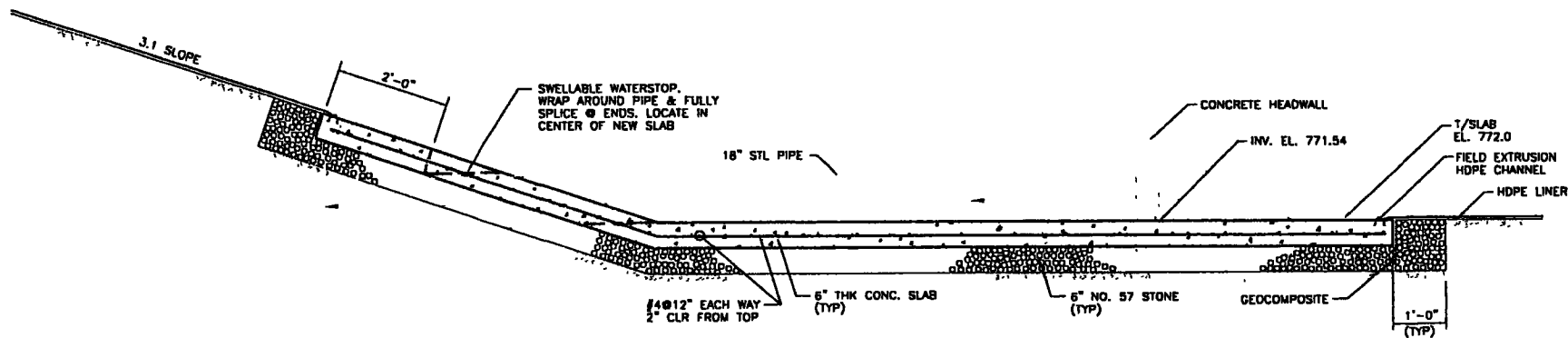
DATE: _____







EXISTING SECTION 1



NEW SECTION 2

SHEET NO. _____ DATE _____	DRAWN BY _____ CHECKED BY _____ DATE _____	PROJECT NO. _____ SHEET NO. _____	CDM Chong Designer & Muller Inc. 1100 Republic Avenue, Suite 100 Columbus, OH 43219 Tel: 614-291-0001 Fax: 614-291-0002	CITY OF OSERLIN, OHIO OSERLIN WATER ENVIRONMENT PROTECTION FACILITY OLD EQUALIZATION BASIN IMPROVEMENTS	NEW EQ BASIN EXISTING AND NEW SECTIONS	PROJECT NO. 2008-0101 SHEET NO. 4
-------------------------------	--	--------------------------------------	--	--	---	---

OBERLIN WWTP
 REVISED 4/6/06
 CHANGE ORDER # 2

DESCRIPTION	QTY	UNIT	PRICE	TOTAL
BID UNITS				
MOBILIZATION	1	LS	\$ 16,700.00	\$ 16,700.00
ACCESS ROAD	1	LS	\$ 4,665.00	\$ 4,665.00
UNDERGROUND VOID GROUTING	52	CY	\$ 300.00	\$ 15,600.00
MANHOLE PATCHING	1	LS	\$ 2,125.00	\$ 2,125.00
MANHOLE RE-LINING	1	LS	\$ 5,445.00	\$ 5,445.00
LINER REPLACEMENT	1775	SF	\$ 7.90	\$ 14,022.50
GEOCOMPOSITE REPLACEMENT	1775	SF	\$ 4.50	\$ 7,987.50
CONCRETE SLAB	1	LS	\$ 17,156.25	\$ 17,156.25
GROUT FILL VOID BENEATH LINER	25	CY	\$ 157.50	\$ 3,937.50
CLAY FILL VOID BENEATH LINER	25	CY	\$ 119.00	\$ 2,975.00
NEW LINER IN OLD EQ BASIN	275	SF	\$ 19.15	\$ 5,266.25

TOTAL

~~\$ 95,880.00~~
 # 90,780.⁰⁰

DESCRIPTION
REVISED 4/6/06
GENERAL CONDITIONS

DESCRIPTION	QTY	UNIT	PRICE	12.5% O/P	TOTAL
BOND	1	LS	\$ 1,200.00	\$ 1,350.00	\$ 1,350.00
INSURANCE	1	LS	\$ 150.00	\$ 168.75	\$ 168.75
LICENSE	1	LS	\$ 150.00	\$ 168.75	\$ 168.75
PROJECT MANAGER	24	HR	\$ 50.00	\$ 56.25	\$ 1,350.00
SUPERINTENDANT	3	WK	\$ 2,000.00	\$ 2,250.00	\$ 6,750.00
DUMPSTER	1	LS	\$ 400.00	\$ 450.00	\$ 450.00
LAYOUT	4	HR	\$ 125.00	\$ 140.63	\$ 562.50
RESTORATION	1	LS	\$ 2,240.00	\$ 2,520.00	\$ 2,520.00
MOB/DEMOB	40	HR	\$ 75.00	\$ 84.38	\$ 3,375.00

GENERAL CONDITIONS

\$ 16,695.00

ACCESS ROAD

EXCAVATION	65	CY	\$ 10.00	\$ 11.25	\$ 731.25
TRUCK	6	HR	\$ 65.00	\$ 73.13	\$ 438.75
DISPOSAL	65	CY	\$ 5.00	\$ 5.63	\$ 365.63
FABRIC	470	SY	\$ 0.75	\$ 0.84	\$ 396.56
INST FABRIC	470	SY	\$ 0.50	\$ 0.56	\$ 264.38
# 1 & # 2 STONE	100	TN	\$ 16.90	\$ 19.01	\$ 1,901.25
INST # 1 & # 2 STONE	100	TN	\$ 5.00	\$ 5.63	\$ 562.50

ACCESS ROAD

\$ 4,660.31

CONCRETE WORK

CUT & REM LINER & GEOCOMPOSITE	4	HR	\$	280.00	\$	315.00	\$	1,260.00
EXCAVATION	8	HR	\$	280.00	\$	315.00	\$	2,520.00
TRUCK	8	HR	\$	65.00	\$	73.13	\$	585.00
DISPOSAL	16	CY	\$	5.00	\$	5.63	\$	84.38
COMPACTION	2	HR	\$	280.00	\$	315.00	\$	630.00
STONE BEDDING	20	TN	\$	16.00	\$	16.88	\$	337.50
INST STONE BEDDING	3	HR	\$	280.00	\$	315.00	\$	945.00
FORMS	60	SF	\$	3.00	\$	3.38	\$	202.50
INST FORMS	2	HR	\$	280.00	\$	315.00	\$	630.00
DOWELS	12	EA	\$	16.00	\$	16.88	\$	202.50
INST DOWELS	1	HR	\$	280.00	\$	315.00	\$	315.00
WATERSTOP	20	LF	\$	7.50	\$	8.44	\$	168.75
INST WATERSTOP	1	HR	\$	280.00	\$	315.00	\$	315.00
REBAR	575	LB	\$	0.45	\$	0.51	\$	291.09
INST REBAR	4	HR	\$	280.00	\$	315.00	\$	1,260.00
FORM HDPE CHANNEL	2	HR	\$	280.00	\$	315.00	\$	630.00
CONCRETE	6	CY	\$	100.00	\$	112.50	\$	675.00
INST CONCRETE	4	HR	\$	280.00	\$	315.00	\$	1,260.00
SEALER	190	SF	\$	0.20	\$	0.23	\$	42.75
STRIP FORMS	2	HR	\$	280.00	\$	315.00	\$	630.00
INST PERIMETER STONE	2	HR	\$	280.00	\$	315.00	\$	630.00

CONCRETE WORK

\$ 13,614.47

LINER WORK

REGRADE & COMPACT VOID	4	HR	\$	280.00	\$	315.00	\$	1,260.00
GROUT FILL VOID BENEATH LINER	25	CY	\$	55.00	\$	61.88	\$	1,546.88
GROUT FILL VOID BENEATH LINER INST	8	HR	\$	280.00	\$	315.00	\$	2,520.00
CLAY FILL VOID BENEATH LINER	25	CY	\$	20.00	\$	22.50	\$	562.50
CLAY FILL VOID BENEATH LINER	8	HR	\$	280.00	\$	315.00	\$	2,520.00
AMERICAN ENVIROMENTAL	1	LS	\$	21,800.00	\$	24,525.00	\$	24,525.00
NERONE SUPPORT	16	HR	\$	150.00	\$	168.75	\$	2,700.00

LINER WORK

\$ 35,634.38

MANHOLE WORK

LEE INFRASTRUCTURE ITEM # 3	1	LS	\$	1,500.00	\$	1,687.50	\$	1,687.50
LEE INFRASTRUCTURE ITEM # 4	1	LS	\$	5,000.00	\$	5,625.00	\$	5,625.00
OHIO PRESSURE GROUT ITEM # 2	1	LS	\$	14,768.00	\$	16,614.00	\$	16,614.00
NERONE SUPPORT	8	HR	\$	150.00	\$	168.75	\$	1,350.00

MANHOLE WORK

\$ 25,276.50

GRAND TOTAL

\$ 95,880.66

216 662 5522 P.04

216 662 5522

P.04