

SEEING THE FUTURE WITH

20/20 VISION

Session 2

**ENLARGE THE PLACE OF
YOUR TENT**



West Highland

Making the *Word* fully known

Review:

**EXAMINING THE WALLS OF
JERUSALEM**

We have challenges that are:

1. Spiritual

2. Structural

3. Physical

4. Personnel

5. Surmountable

Tonight:
Enlarge the Place
of Your Tent
Isaiah 54:1-3

**What should West Highland look like
in 2020?**

Same Assumptions

- **Want to grow**
- **God glorified**
- **Want to change**
- **Modify – Flexible**
- **Committed to seeking God**
- **Want to be used of God to see
Acts 19:10,20 fulfilled in Hamilton**

**What Should West Highland
Look Like in 2020?**

1. DOUBLE THE PRESENT SIZE

a. Average worship attendance of 1600 to 1700 people.

b. Active membership of 1200 people committed to our Mission

What is our Mission?

- 1. Making the Word of God Fully Known**
- 2. Making the People of God Fully Mature**

This Manifests Itself in 2 Ways:

- 1. A Commitment to PARTICIPATE
in the TOGETHERNESS of the
local church**

By Devotion to:

- a. The Word**
- b. Fellowship**
- c. Worship**
- d. Prayer**
- e. Stewardship**

2. A Commitment to PARTICIPATE in the TASK of the Local Church

By:

Exalting Christ

Edifying Christians

Evangelizing Community

**THIS TWO FOLD commitment means
involvement in:**

- 1. Worship**
- 2. Serving**
- 3. Small Groups**
- 4. Training /Equipping**

2. INSPIRING GOD FILLED SERVICES OF WORSHIP

- **Christ Centered**
 - **Word Filled**

Read the Bible

Preach the Bible

Pray the Bible

Sing the Bible

See the Bible

3. A PEOPLE CHARACTERIZED BY PASSIONATE SPIRITUALITY

- **Theology Greatly Rooted**
- **Committed to Biblical Instruction**
- **Pursuing Holiness**
- **Dedicated to Intercession**
- **Spiritual Disciplines**

4. 80% OF MEMBERS IN SMALL GROUP MINISTRY

This means:

- a) a Minimum of 90 Life Groups with 1000 attending**

- b) Small Groups – primary means for Assimilation, Nurture, Fellowship and Care at West Highland.**

5. A CHURCH THAT HAS THE SEEKING OF THE LOST AS ITS HEARTBEAT

- **Every home reached**
- **Evangelism training**
- **Jesus the number one issue in the city**
- **Division of Ministry led by Evangelist**

6. OPERATES COMMUNITY SENSITIVE PROGRAMMING

7. NEW ORGANIZATIONAL STRUCTURE

a. Basic Principles:

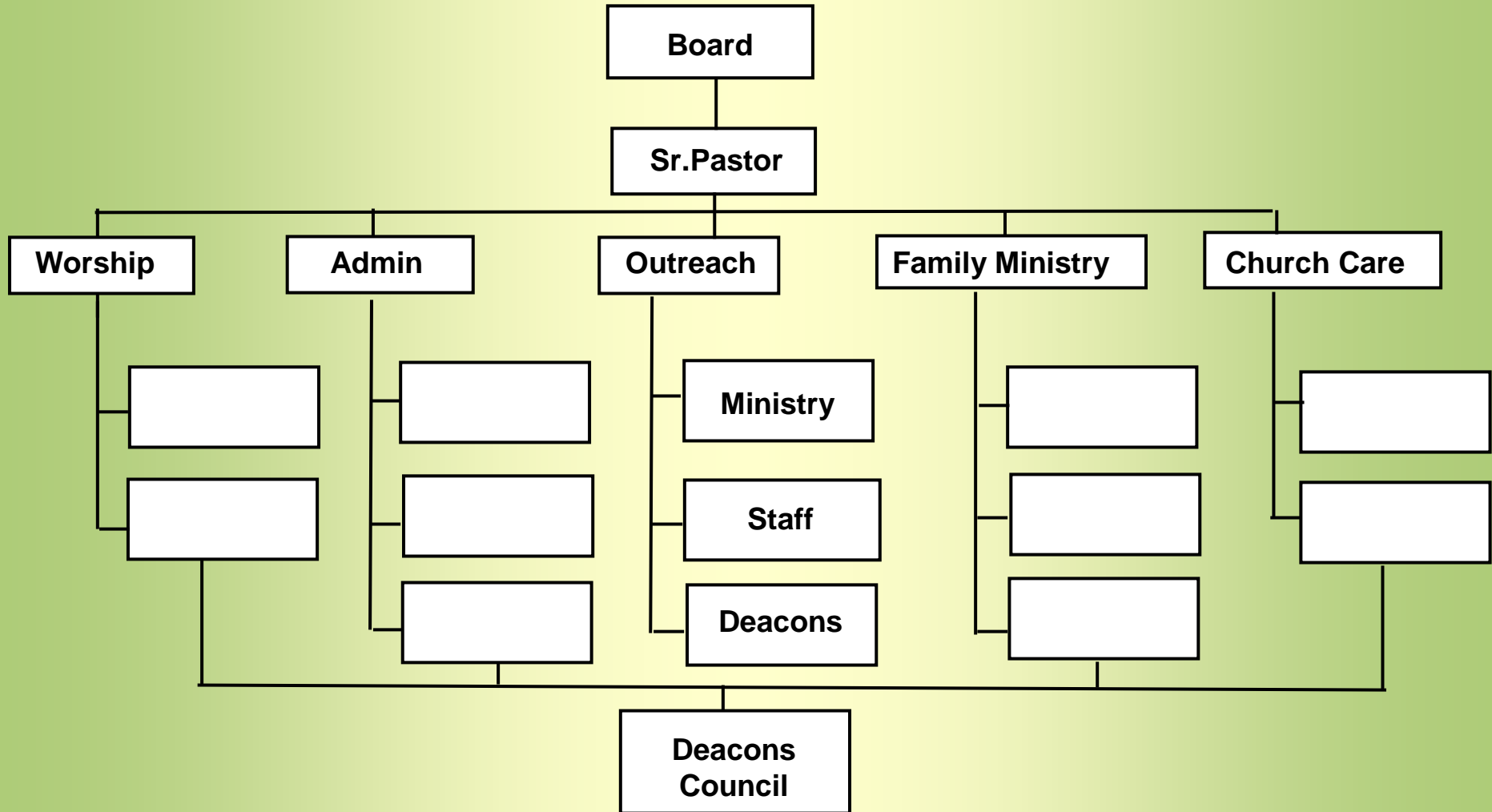
- 1. Board governs**
- 2. Pastor leads**
- 3. Staff manages**
- 4. Members minister**

b. Board of Elders

c. Enlarged and Redefined Diaconate

d. Ministry Structured Divisionally

ORGANIZATIONAL CHART



**Family Ministry
Division Leader**

Staff:

- Counsellor
- Kids Director
- Interns
- Secretarial

Ministries:

- Family Counselling
- Marriage enrichment
- STARkids
- Student Ministries

Deacons

**Church Care
Division Leader**

Staff:

- Pastoral Care Director
- Small Groups Director
- Mature Adults Director
- Secretarial

Ministries:

- Small Groups
- Bible Classes
- Stephen Ministry
- Hospital, shut-ins
- JOY Fellowship

Deacons

**Outreach Ministries
Division Leader**



- Staff:**
- Interns
 - Secretarial
 - Evangelists

- Ministries:**
- Evangelism
 - Social Concern
 - Missions

Deacons

8. NEW DOCTRINAL STATEMENT AND CHURCH COVENANT

- **Reformation Realities – The “Solas”**
- **Baptist Distinctives**
- **Post modern, Multicultural,
Multi-religious Realities**

9. MARRIAGES AND FAMILIES GROWING IN STRENGTH

10. LEADERSHIP DEVELOPMENT IS A PRIORITY

- a. Staff Leaders produce Leaders**
- b. All Echelons of Leadership**
- c. Full blown Internship Program**

11. DYNAMIC STUDENT MOVEMENT AND COLLEGE CHURCH

- **Not Youth Group BUT Youth Movement**

12. A RESOURCE SHARING CHURCH

13. INTERNATIONAL CHURCH

**14. NEW ENLARGED FACILITIES
CAPABLE OF HOUSING &
FACILITATING THE MINISTRIES &
NUMBERS OF PEOPLE ENVISIONED**

I HAVE A DREAM!

SEEING THE FUTURE WITH

20/20 VISION



West Highland

Making the *Word* fully known