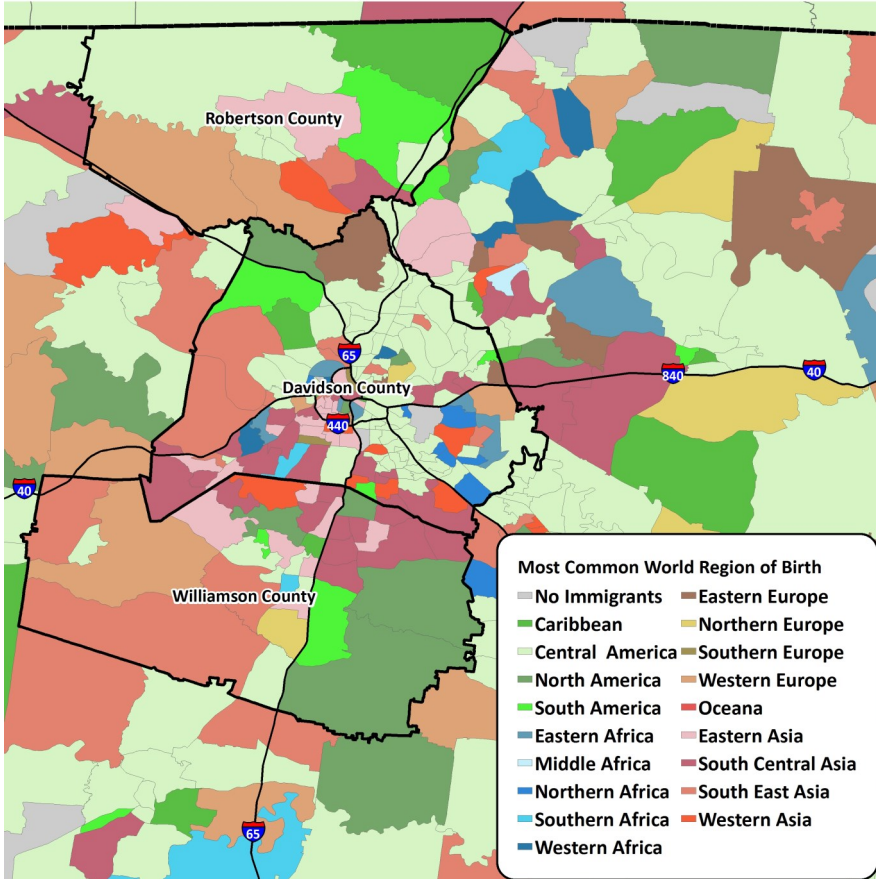


Immigrants in North Central Tennessee, 2010-2014

iDod: Fact Sheets with Data on Immigrants, Customized For You, For Free.

Most Common World Region of Birth among Immigrants in Davidson, Robertson, and Williamson Counties



The map on the left presents the most common world region of birth among immigrants in Census tracts of north central Kentucky. Census tracts in Davidson, Robertson, and Williamson County are outlined. Central America is the most common world region of birth among immigrants in many Census tracts of Davidson County and Robertson County. Eastern Asia, South Central Asia, and South East Asia are common world regions of birth among immigrants in Census tracts of Williamson County.

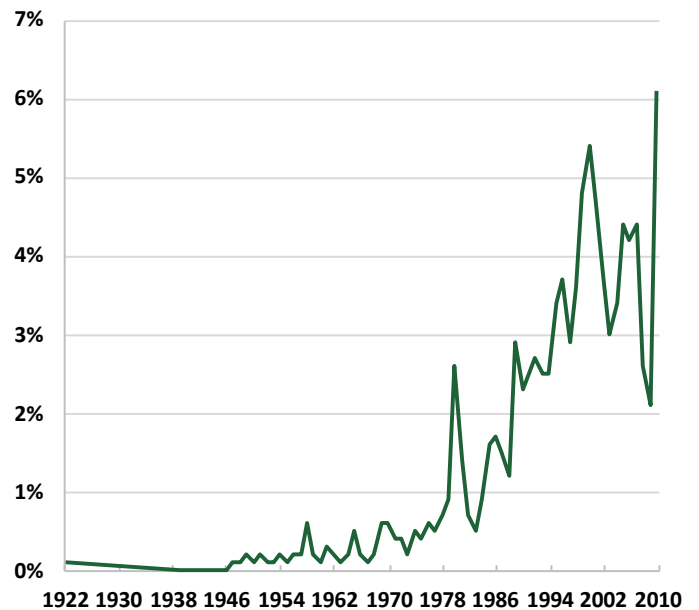
According to the chart below and to the left, a large proportion of immigrant households in Davidson and Williamson County originate from Latin America and the Caribbean.

According to the chart below, the majority of immigrant households in Davidson and Williamson County arrived in 1995 or later years.

World Regions of Birth among Immigrant Households in Davidson and Williamson County

World Regions of Birth	Davidson & Williamson County	U.S.
North America	3%	3%
Latin America and Caribbean	43%	50%
Europe	9%	15%
Asia	29%	28%
Africa	15%	4%
Oceania	< 1%	< 1%
Other	< 1%	< 1%
Estimated Number of Immigrant Households	33,906	16,553,889

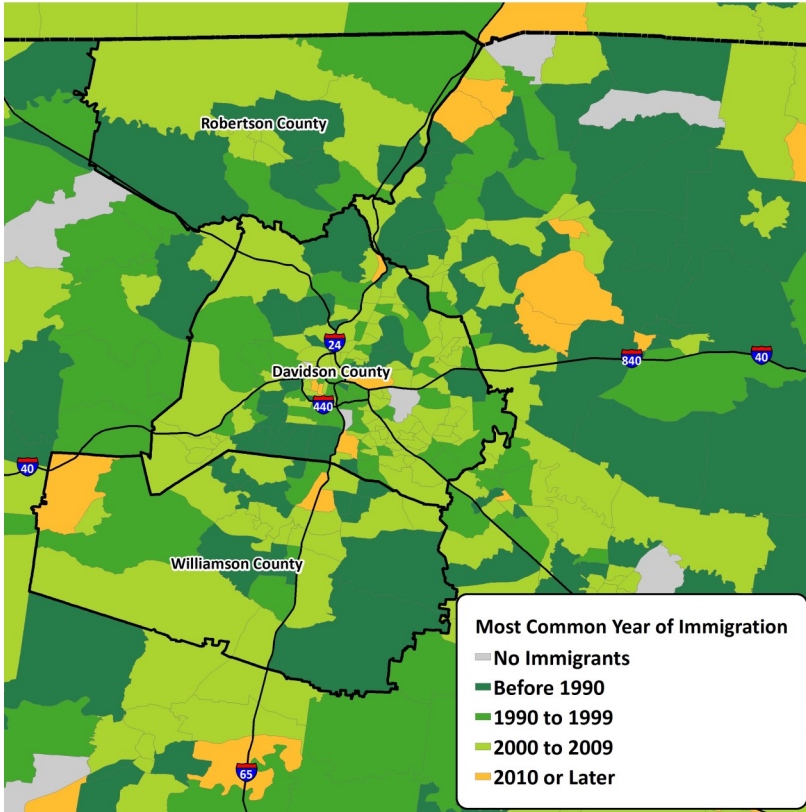
Year of Immigration among Immigrant Households in Davidson and Williamson County



Source: U.S. Census Bureau. American Community Survey, 2010-2014. ipums.org extracts. Tigerline shapefiles.

Immigrants in North Central Tennessee, 2010-2014

Most Common Year of Entry among Immigrants in Davidson, Williamson, and Robertson Counties

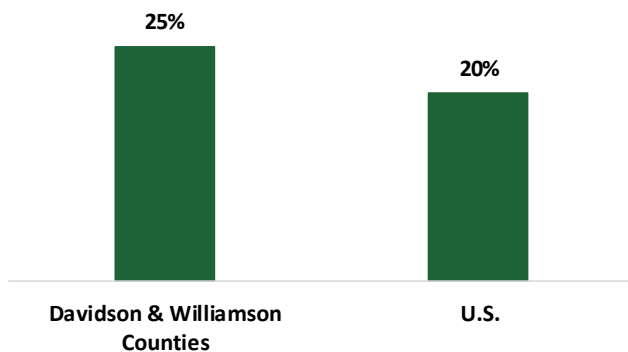


The map on the left presents the most common year of immigration among immigrants in Davidson, Robertson, and Williamson Counties. In many Census tracts of Davidson, Robertson, and Williamson County, the most common years of entry among immigrants are 2000 to 2009.

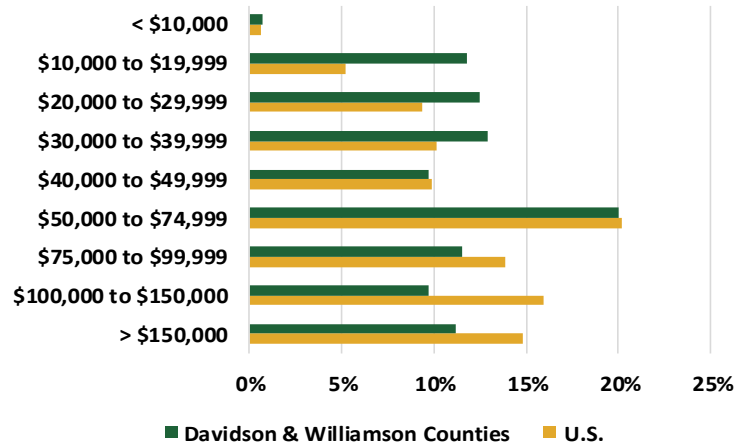
According to the chart below and to the left, approximately 25 percent of immigrant households in Davidson and Williamson County live in poverty. This is compared to 20 percent of immigrant households at the national level.

According to the graph below, approximately 48 percent of immigrant households in Davidson and Williamson county make less than \$50,000 per year. This is compared to roughly 35 percent of immigrant households at the national level.

Poverty Rate among Immigrant Households in Davidson and Williamson Counties



Incomes among Immigrant Households in Davidson and Williamson County



ABOUT THE INSTITUTE FOR IMMIGRATION RESEARCH

IIR works to refocus the immigration conversation among academics, policy-makers and the public, including the business community and media, by producing and disseminating unbiased and objective, interdisciplinary academic research related to immigrants and immigration to the United States. The Institute for Immigration Research is a joint venture between George Mason University and the Immigrant Learning Center, Inc. (ILC) of Massachusetts.

IMMIGRATION DATA ON DEMAND (iDod)

The iDod service is offered free of charge to help individuals and institutions examine the immigrant populations of their particular geography. Recipients of this data will see how immigrants provide vital contributions to the economy and society of the U.S. Ultimately, the goal of the iDod project is to create collaborations and connect people with data from their particular region or sector of interest on immigrant populations.