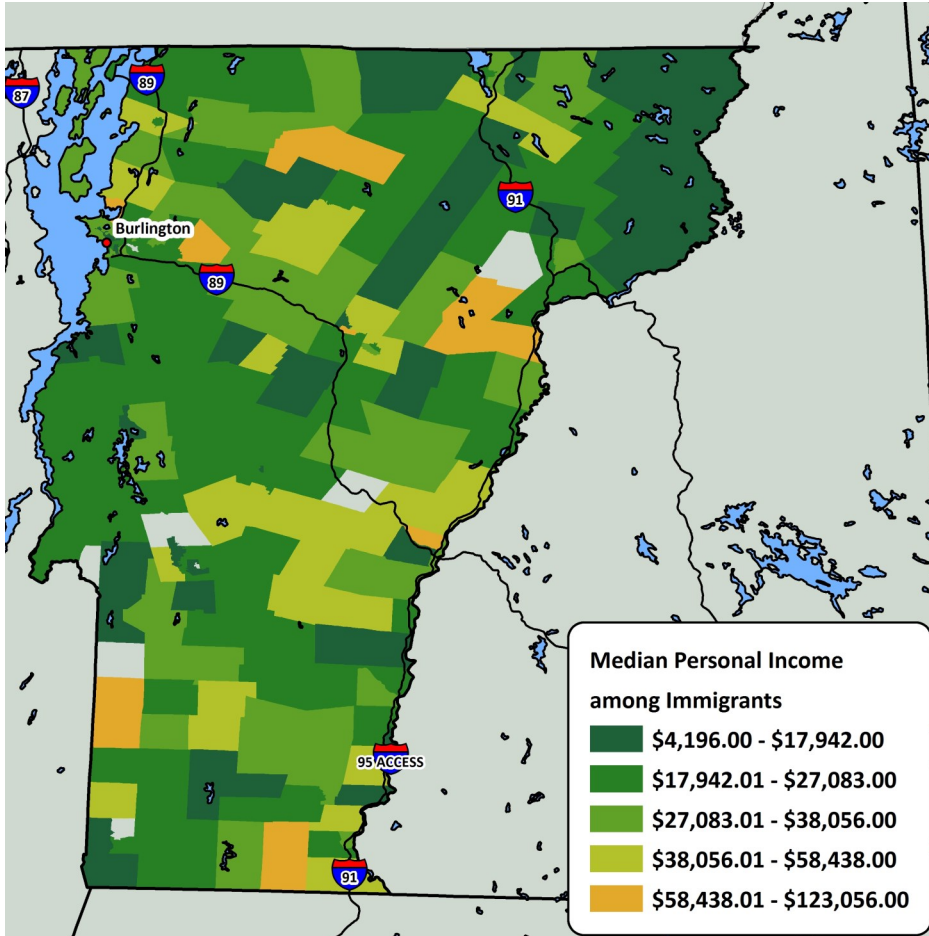


# Immigrants in Chittenden County, Vermont, 2010-2014

iDod: Fact Sheets with Data on Immigrants, Customized For You, For Free.

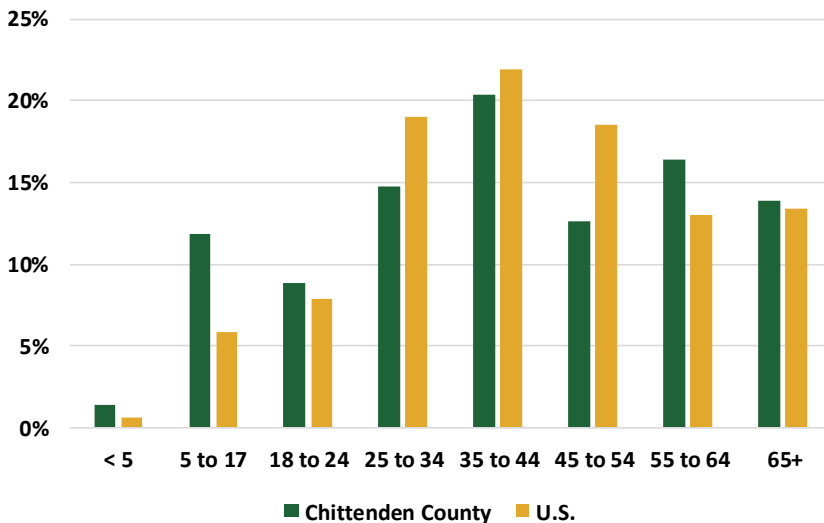
## Median Personal Income among Immigrants in Vermont Census Tracts



The map on the left presents the median personal income among immigrant workers in Census tracts of Vermont. Orange Census tracts are characterized by median incomes between \$58,438 and \$123,056. Orange Census tracts are located in southern Vermont, and east of the city of Burlington.

Chittenden County contains the city of Burlington. According to the graph below and to the left, there is a larger proportion of immigrants under the age of 25 in Chittenden County in comparison to the national population of immigrants. There is also a larger proportion of immigrants above the age of 54 in Chittenden County in comparison to the national population of immigrants. Approximately 14 percent of immigrants in Chittenden County were born in Canada. The “all other countries” category represents 62 additional countries.

## Age Distribution among Immigrants in Chittenden County and the U.S.



## Top Ten Countries of Birth among Immigrants in Chittenden County

Country of Birth	Percent
Canada	14
China	9
Bosnia	6
Bhutan	6
Thailand	5
Vietnam	5
United Kingdom, not specified	4
Asia, not specified	4
India	3
Philippines	3
All other countries	42
<b>Estimated Immigrant Population</b>	<b>9,869</b>

# Immigrants in Chittenden County, Vermont, 2010-2014

## Distribution of Immigrant Workers among Occupational Categories in Chittenden County

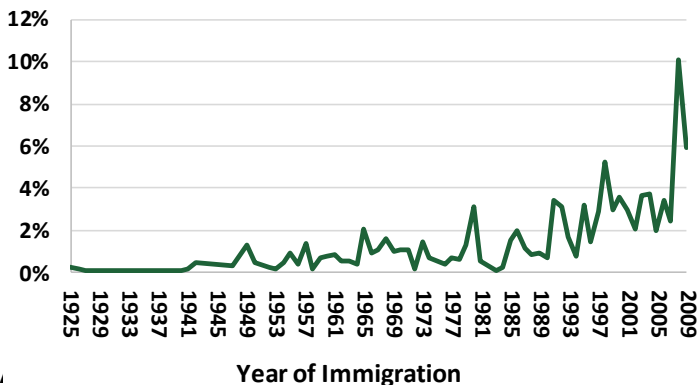
Occupational Groups	Percent
Sales and Related	14
Building, Grounds Cleaning and Maintenance	10
Healthcare Practitioners and Technical	10
Education, Training, and Library	8
Production	8
Healthcare Support	7
Food Preparation and Serving	7
Management, Business, Science, and Arts	7
Office and Administrative Support	6
Transportation and Material Moving	4
Construction and Extraction	3
Financial Specialists	2
Personal Care and Service	2
Life, Physical, and Social Science	2
Protective Service	2
Farming, Fishing, and Forestry	2
Installation, Maintenance, and Repair Workers	2
Arts, Design, Entertainment, Sports, and Media	2
Architecture and Engineering	1
Computer and Mathematical	1
Business Operations Specialists	1
Legal	< 1
Community and Social Services	< 1
<b>Estimated Population of Immigrant Workers</b>	<b>5,842</b>

The table to the left presents the distribution of immigrant workers among occupational groups in Chittenden County. Approximately 14 percent of this population works in sales and related occupations. An additional 10 percent works in building, grounds cleaning, and maintenance occupations. Another 10 percent works in education, training, and library occupations.

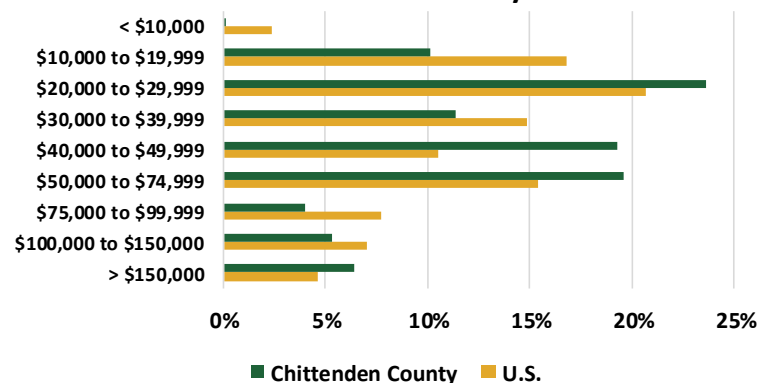
About 71 percent of immigrants in Chittenden County arrived in 1985 or later.

Approximately 34 percent of full-time immigrant workers in Chittenden County make less than \$30,000 a year. This is compared to approximately 40 percent at the national level. Overall, immigrant workers in Chittenden County are slightly more affluent than immigrant workers at the national level.

## Years of Immigration to the U.S. among Immigrants in Chittenden County



## Total Personal Income among Full-Time Immigrant Workers in Chittenden County and the U.S.



IIR works to refocus the immigration conversation among academics, policy-makers and the public, including the business community and media, by producing and disseminating unbiased and objective, interdisciplinary academic research related to immigrants and immigration to the United States. The Institute for Immigration Research is a joint venture between George Mason University and the Immigrant Learning Center, Inc. (ILC) of Massachusetts. To learn more about the Institute for Immigration Research call (703) 993-5833, email [iir@gmu.edu](mailto:iir@gmu.edu), or visit us online [iir.gmu.edu](http://iir.gmu.edu).

### IMMIGRATION DATA ON DEMAND (iDod)

The iDod service is offered free of charge to help individuals and institutions examine the immigrant populations of their particular geography. Recipients of this data will see how immigrants provide vital contributions to the economy and society of the U.S. Ultimately, the goal of the iDod project is to create collaborations and connect people with data from their particular region or sector of interest on immigrant populations.