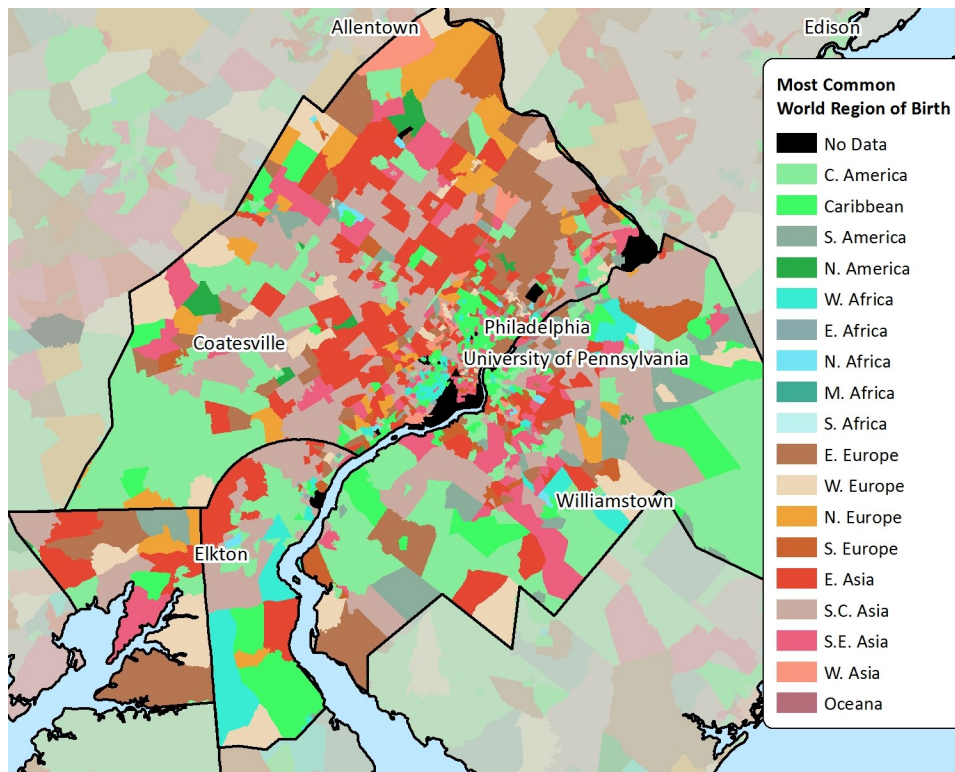


Immigrants in Philadelphia, PA Metro Area, 2010-2014

iDod: Fact Sheets with Data on Immigrants, Customized For You, For Free.

Most Common World Regions of Birth for Immigrants Living in Philadelphia, PA

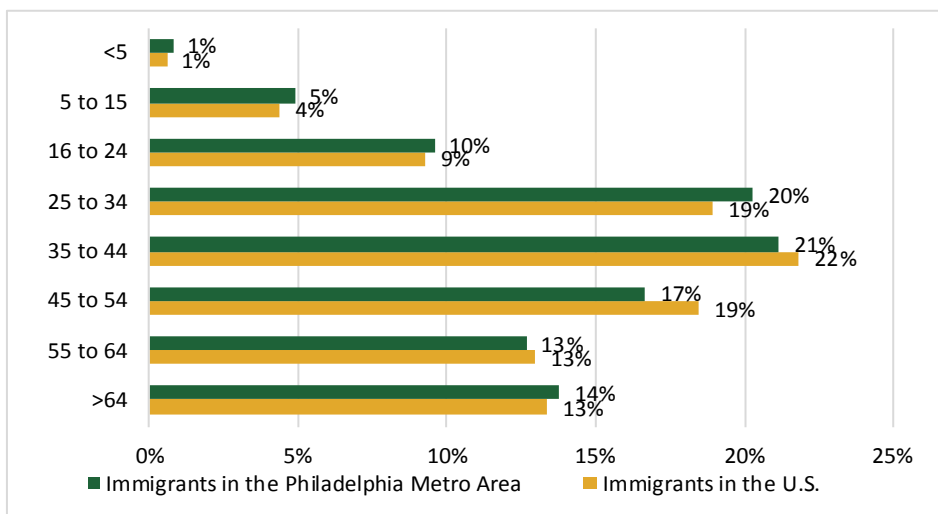


The map on the left shows the most common world regions of birth for immigrants living in the Philadelphia metro area, according to U.S. Census tracts. The largest group of immigrants in the Philadelphia metro area are from Central America. Immigrants from Southcentral and East Asia reside in the Census tracts immediately surrounding the city.

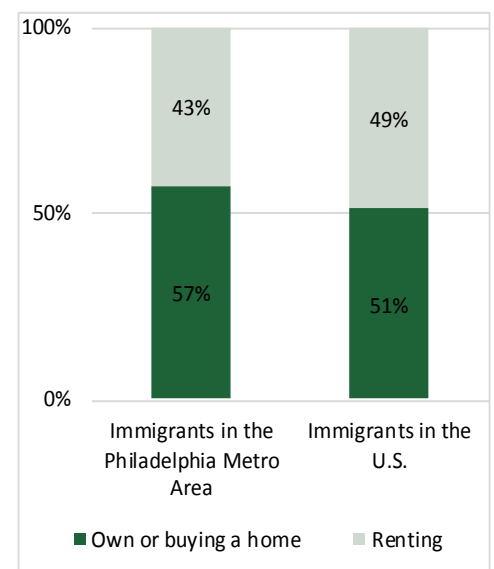
According to the graph regarding age at the below left, 36 percent of immigrants living in the Philadelphia metro area are under the age of 35. This number is close to the national figure, which is 33 percent. Additionally, the average age for immigrants living in the Philadelphia metro area is 43 years old.

As shown in the chart below, compared to the immigrant households nationwide, immigrant households living in the Philadelphia metro area are less likely to rent and more likely to own a home.

Age of Immigrants Living in the Philadelphia Metro Area and the U.S.



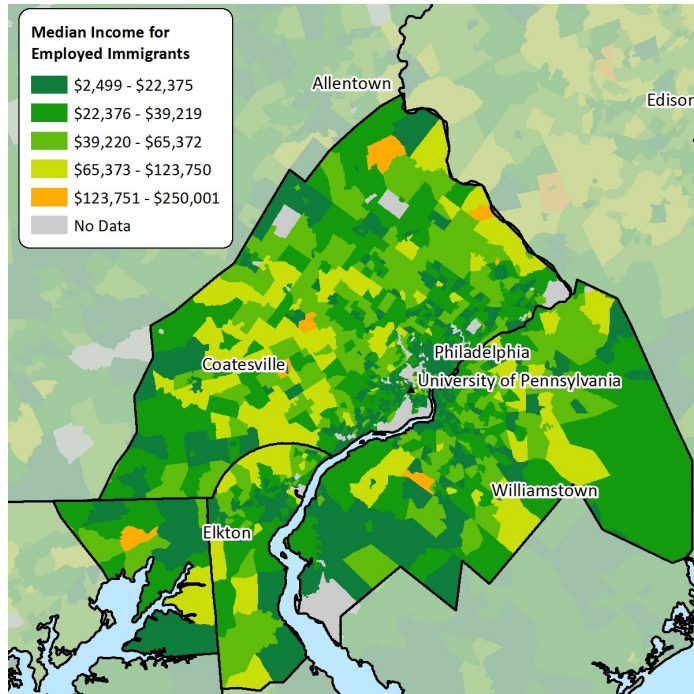
Rate of Home Ownership Among Immigrants Living in the Philadelphia Metro Area and the U.S.



Immigrants in Philadelphia, PA Metro Area, 2010-2014

Median Income for Employed Immigrants per Household

Living in Philadelphia, PA

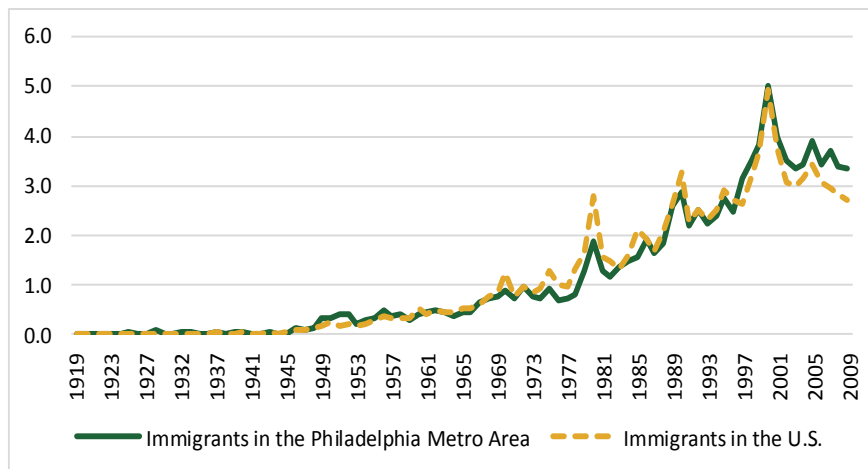


The map on the left presents the median income for employed immigrant household heads (age 16+) living in Philadelphia. Immigrant households with the highest median income reside in the areas outside of Philadelphia. The immigrant community around the University of Pennsylvania have some of the lowest incomes in the area.

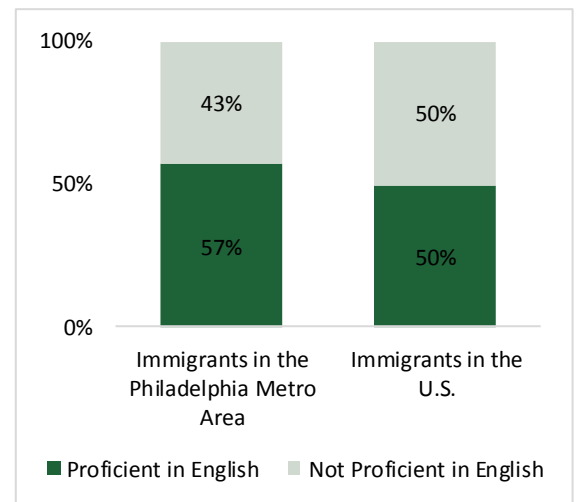
The average year of immigration for immigrants living in the Philadelphia metro area is 1991. As shown on the graph on the bottom left, compared to immigration to the United States, there were higher rates of immigration to the Philadelphia metro area between the years 1997 to 1999 and 2007 to 2009.

According to the chart below regarding English proficiency (speaks very well or above), when compared to immigrants in the United States, immigrants ages five years and older living in the Philadelphia metro area reported a higher percentage of English proficiency.

Year of Immigration for Immigrants in the Philadelphia Metro Area and the U.S.



English Proficiency Among Immigrants (Age 5+) Living in the Philadelphia Metro Area and the U.S.



ABOUT THE INSTITUTE FOR IMMIGRATION RESEARCH

IIR works to refocus the immigration conversation among academics, policy-makers and the public, including the business community and media, by producing and disseminating unbiased and objective, interdisciplinary academic research related to immigrants and immigration to the United States. The Institute for Immigration Research is a joint venture between George Mason University and the Immigrant Learning Center, Inc. (ILC) of Massachusetts.

IMMIGRATION DATA ON DEMAND (iDod)

The iDod service is offered free of charge to help individuals and institutions examine the immigrant populations of their particular geography. Recipients of this data will see how immigrants provide vital contributions to the economy and society of the U.S. Ultimately, the goal of the iDod project is to create collaborations and connect people with data from their particular region or sector of interest on immigrant populations.