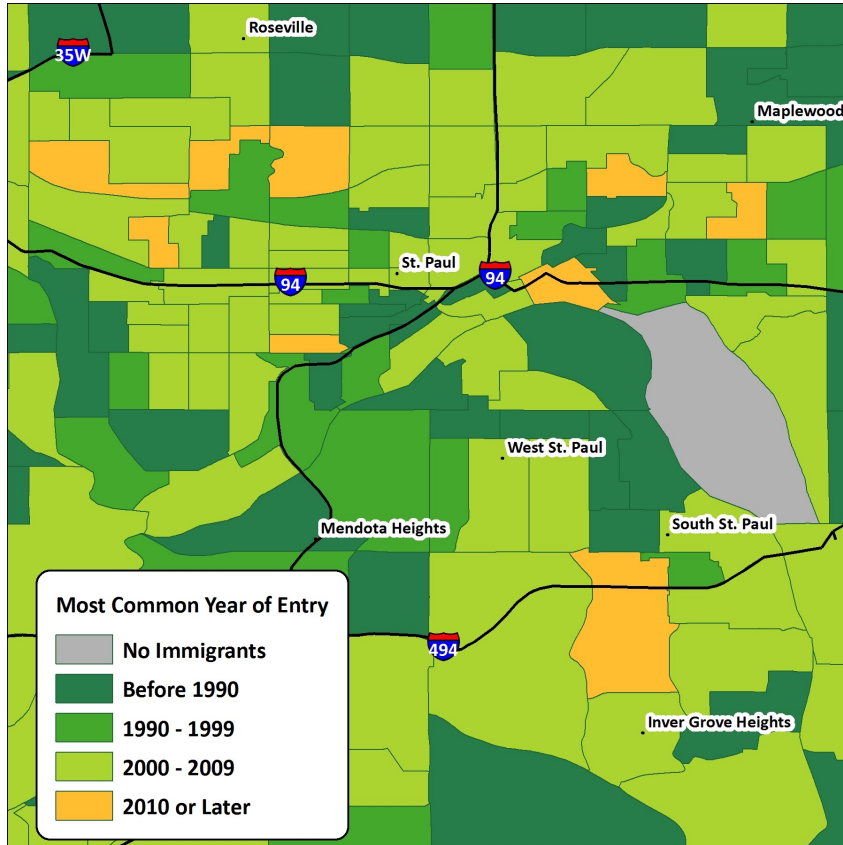


Immigrants in St. Paul, Minnesota, 2010-2014

iDod: Fact Sheets with Data on Immigrants, Customized For You, For Free.

Most Common World Region of Birth among Immigrants in St. Paul, Minnesota



The map on the left presents the most common year of entry among immigrants in Census tracts of St. Paul, Minnesota. Dark green Census tracts indicate that the largest proportion of immigrants in arrived in 1999 or earlier years. Light green and orange Census tracts indicate that the largest proportion of immigrants arrive in 2000 or later years. In most Census tracts, the largest proportion of immigrants immigrated to the U.S. in 2000 or later years.

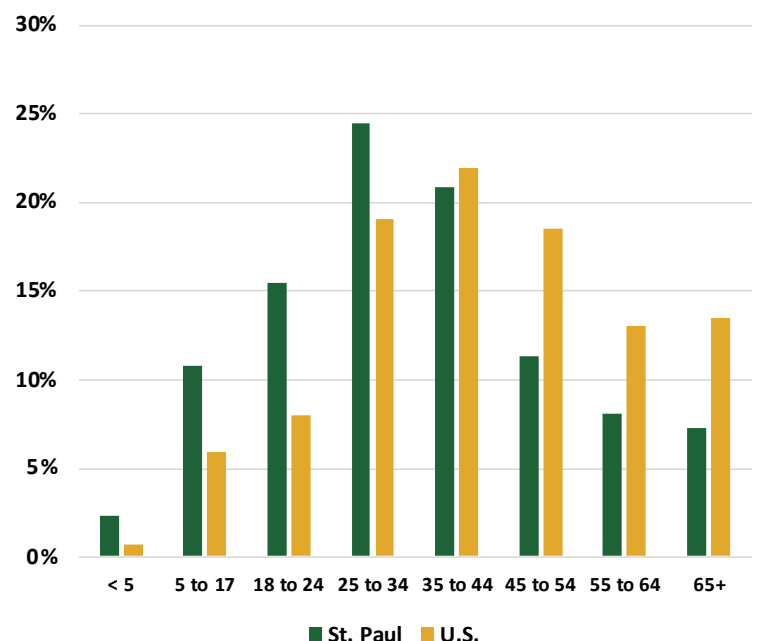
The majority of immigrants in St. Paul, Minnesota identify as Asian, non-Hispanic. A large minority of immigrants in St. Paul also identify as Black non-Hispanic.

Immigrants in St. Paul, Minnesota tend to be younger than the national population of immigrants. Also nearly one in four immigrants in St. Paul are between the ages of 25 and 34.

Race and Ethnicity among Immigrants in St. Paul, Minnesota

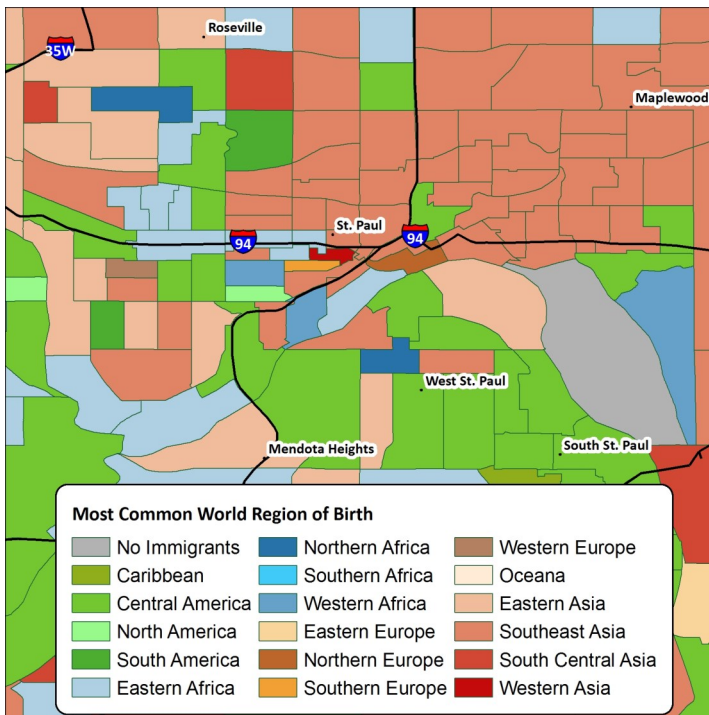
Race and Ethnicity	Percent
White Hispanic	11%
White non-Hispanic	8%
Black Hispanic	< 1%
Black non-Hispanic	21%
Asian Hispanic	0%
Asian non-Hispanic	52%
Native Amer. Hispanic	< 1%
Native Amer. Non-Hispanic	0%
Multiple Races and Ethnicity	2%
Race Not Specified	7%
Estimated Number of Immigrants	52,552

Age Distribution among Immigrants in St. Paul, Minnesota and the U.S.



Immigrants in St. Paul, Minnesota, 2010-2014

Most Common World Region of Birth among Immigrants in Census Tracts of St. Paul, Minnesota

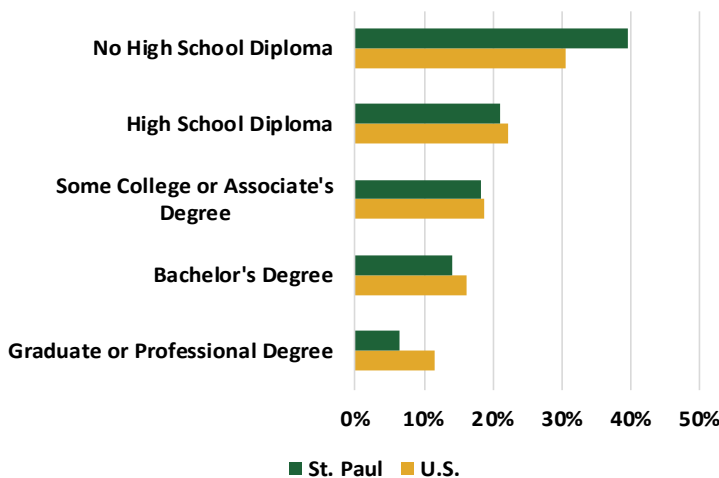


The map on the left presents the most common world region of birth among immigrants in Census tracts of St. Paul, Minnesota. In many Census tracts, the most common world region of birth is Southeast Asia. These tracts also cluster together in the northeast corner of the map, between Maplewood and St. Paul.

Immigrants in St. Paul are characterized by a lower level of educational attainment when compared to the national population of immigrants.

The most common country of birth among immigrants in St. Paul is Laos. The median year of immigration among Laotian immigrants in 1989. Thailand is the second most common country of birth. The median year of immigration among Thai immigrants in 2004.

Educational Attainment among Immigrants in St. Paul, Minnesota



Top Ten Countries of Birth among Immigrants in St. Paul, Minnesota

Countries of Birth	Percent	Median Year of Immigration
Laos	17%	1989
Thailand	16%	2004
Mexico	13%	1999
Burma (Myanmar)	7%	2009
Ethiopia	7%	2003
Somalia	6%	2001
Vietnam	5%	1998
El Salvador	4%	2007
India	2%	2009
Liberia	2%	2002
All Other Countries	23%	2001
Estimated Number of Immigrants	52,552	2001

ABOUT THE INSTITUTE FOR IMMIGRATION RESEARCH

IIR works to refocus the immigration conversation among academics, policy-makers and the public, including the business community and media, by producing and disseminating unbiased and objective, interdisciplinary academic research related to immigrants and immigration to the United States. The Institute for Immigration Research is a joint venture between George Mason University and the Immigrant Learning Center, Inc. (ILC) of Massachusetts.

IMMIGRATION DATA ON DEMAND (iDod)

The iDod service is offered free of charge to help individuals and institutions examine the immigrant populations of their particular geography. Recipients of this data will see how immigrants provide vital contributions to the economy and society of the U.S. Ultimately, the goal of the iDod project is to create collaborations and connect people with data from their particular region or sector of interest on immigrant populations.