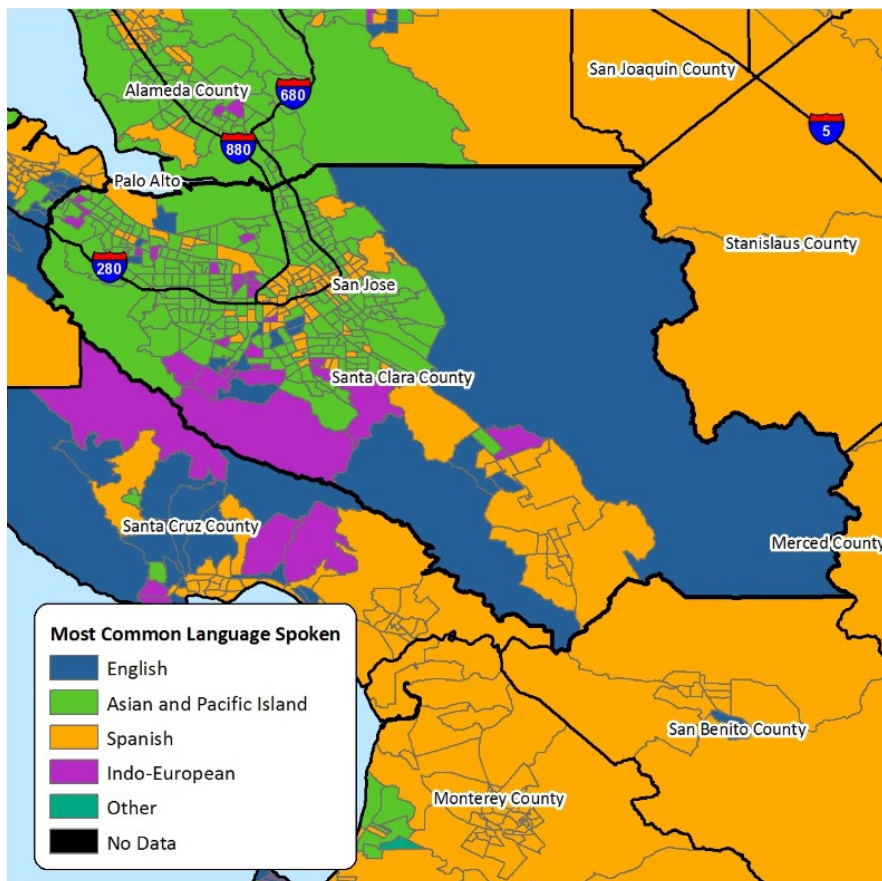


Immigrants in Santa Clara County, CA 2010-2014

iDod: Fact Sheets with Data on Immigrants, Customized For You, For Free.

Most Common Language Spoken by Immigrants in Santa Clara County, CA using Census Tract

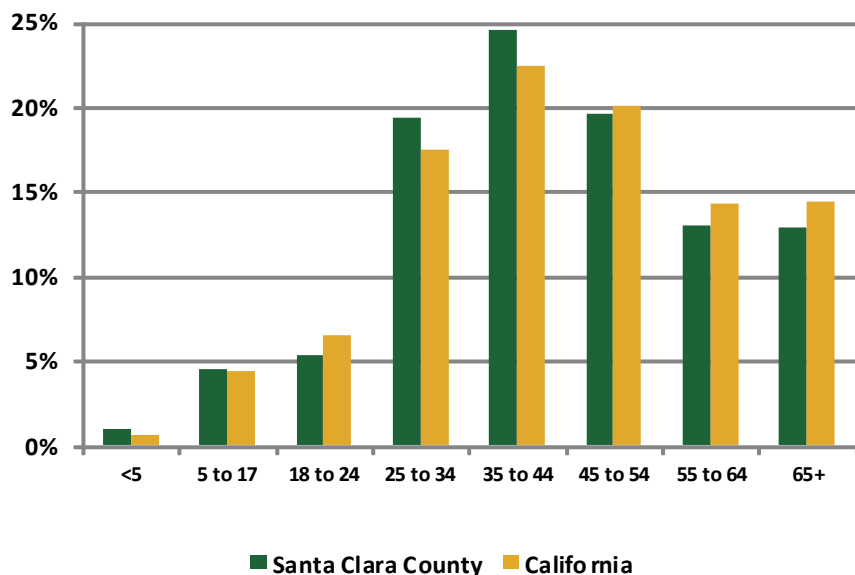


The map on the left presents the most common language spoken among immigrants in Santa Clara County, California. In the north west part of the county, Asian and Pacific Island languages are the most common language spoken at home, followed by Spanish.

The chart on the bottom left depicts the distribution of age for immigrants in Santa Clara County compared to the state of California. Immigrants living in Santa Clara County tend to be younger than immigrants living in the state of California. For example, 25% of the immigrants in Santa Clara County were between the ages of 25 and 44.

Of the top 10 languages spoken in Santa Clara County, one quarter of the immigrants speak Spanish. The remaining three quarters of immigrants speak 92 different languages at home, this suggests a very diverse community of immigrants.

Age Distribution among Immigrants living in Santa Clara County, CA and California

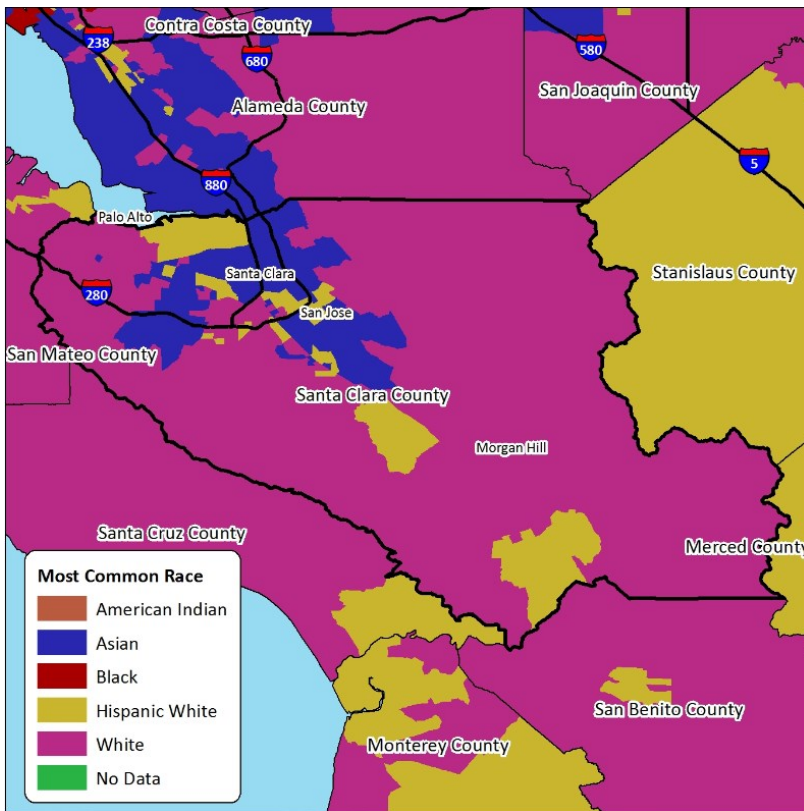


Top Ten Languages Spoken among Immigrants in Santa Clara County, CA

Top Ten Languages	Percent
Spanish	25%
Vietnamese	13%
English	10%
Chinese	9%
Filipino, Tagalog	7%
Hindi	5%
Mandarin	4%
Korean	3%
Telugu	2%
Tamil	2%
All other languages (n= 83)	20%
Estimated Immigrant Population (age 5+)	682,540

Immigrants in Santa Clara County, CA 2010-2014

Most Common Race among Immigrants in Santa Clara County



The map on the left represents the most common race by the census tract in Santa Clara County. The blue Census tract indicates areas with high concentration of Asians, while the pink areas indicate areas with majority of White population. The city of San Jose contains a large population of both White Hispanics and Asians.

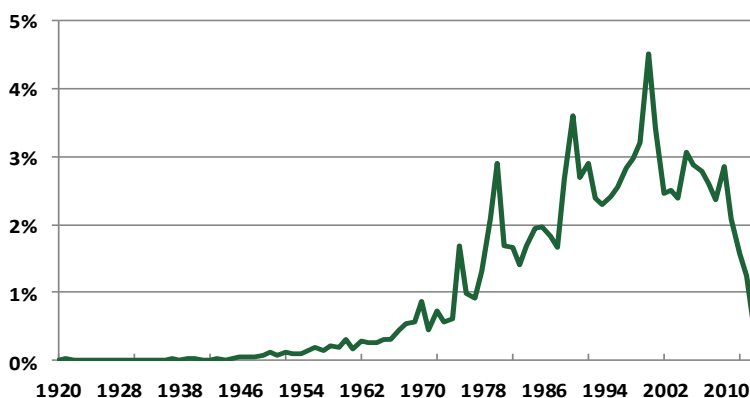
The chart at the bottom left shows that a majority of immigrants living in Santa Clara County arrived after the 1980s. The largest single year of immigrants came in the year 2000.

The majority of immigrants in Santa Clara County identify as Asian non-Hispanic. A large minority of immigrants in Santa Clara County also identify as White Hispanics.

Race and Ethnicity among Immigrants in Santa Clara County, California

Race and Ethnicity among Immigrants in Santa Clara County, California	Percent
Asian non-Hispanic	59%
White Hispanic	14%
White non-Hispanic	13%
Race not Specified	12%
Black non-Hispanic	1%
Native American Hispanic	<1%
Asian Hispanic	<1%
Black Hispanic	<1%
Native American non-Hispanic	<1%
Estimated Immigrant Population	687,815

Year of Immigration among Immigrants in Santa Clara County



ABOUT THE INSTITUTE FOR IMMIGRATION RESEARCH

IIR works to refocus the immigration conversation among academics, policy-makers and the public, including the business community and media, by producing and disseminating unbiased and objective, interdisciplinary academic research related to immigrants and immigration to the United States. The Institute for Immigration Research is a joint venture between George Mason University and the Immigrant Learning Center, Inc. (ILC) of Massachusetts.

IMMIGRATION DATA ON DEMAND (iDod)

The iDod service is offered free of charge to help individuals and institutions examine the immigrant populations of their particular geography. Recipients of this data will see how immigrants provide vital contributions to the economy and society of the U.S. Ultimately, the goal of the iDod project is to create collaborations and connect people with data from their particular region or sector of interest on immigrant populations.