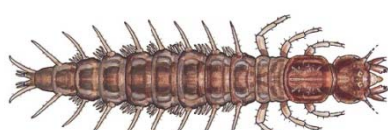


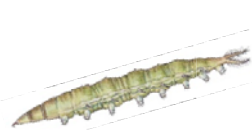
Group 1 – These organisms are generally considered to be intolerant to pollution



Alderfly Larva



Dobsonfly Larva



Snipe Fly Larva



Stonefly Larva

Group 2 – These organisms are generally considered to be moderately intolerant to pollution



Freeswimming  
Caddisfly Larvae

Clams



Fingernail



Asiatic



Mussels



Zebra Mussel



Water Penny



Case  
Maker



Riffle Beetle

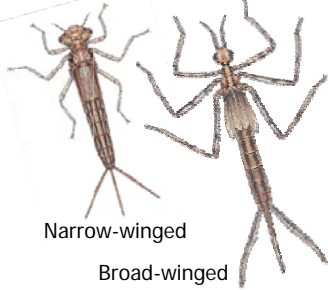


Larva



Adult

Damselfly Larvae

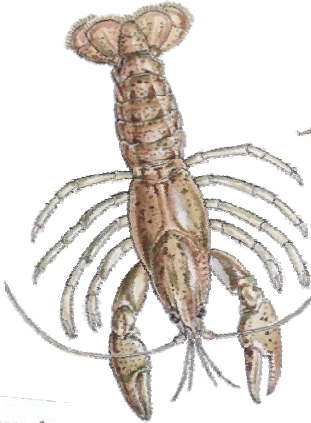


Narrow-winged

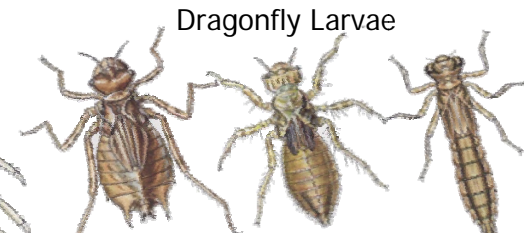
Broad-winged



Crane fly Larva



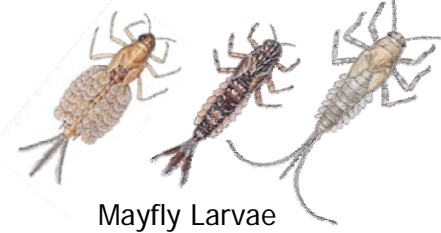
Crayfish



Dragonfly Larvae

Skimmers

Darner



Mayfly Larvae

Group 3 – These organisms are generally considered to be fairly tolerant to pollution



Black Fly Larva



(Brown)

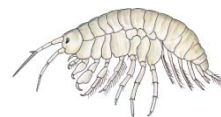
Midge Larva



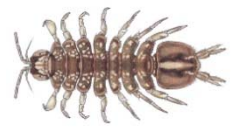
Right-Handed  
(Gilled)



Planorbis



Scud



Sowbug

Group 4 – These organisms are generally considered to be very tolerant to pollution



Aquatic Worm



(Bright Red)

Bloodworm  
Midge Larva



Leech



Left-Handed (Pouch) Snail

Other Aquatic Organisms



Crawling  
Water Beetle



Giant Water Bug



Backswimmer



Whirligig  
Beetle



Waterboatman



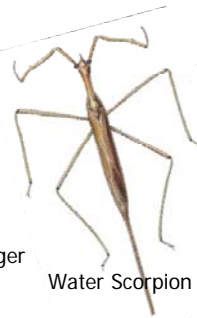
Water  
Strider



Planaria



Water Scavenger  
Beetle



Water Scorpion



Predaceous  
Diving Beetle