

McClaughrey Springs Woods

Mill Creek (flows to the Cal-Sag Channel)

Address or Nearest Intersection:

S. Kean Rd. and W. 119th St., Palos Hills, IL.

Directions: From parking lot on the west side of Kean Rd., Mill Creek is across the lawn.

Owner: Forest Preserves of Cook County (permit required)

Habitat Description: Beautiful forested site. Part of the Palos moraine. Very large site with miles and miles of trails. Great for spring wildflowers. Contains Mill Creek which flows into the Cal-Sag Channel. Good diversity of macroinvertebrates.

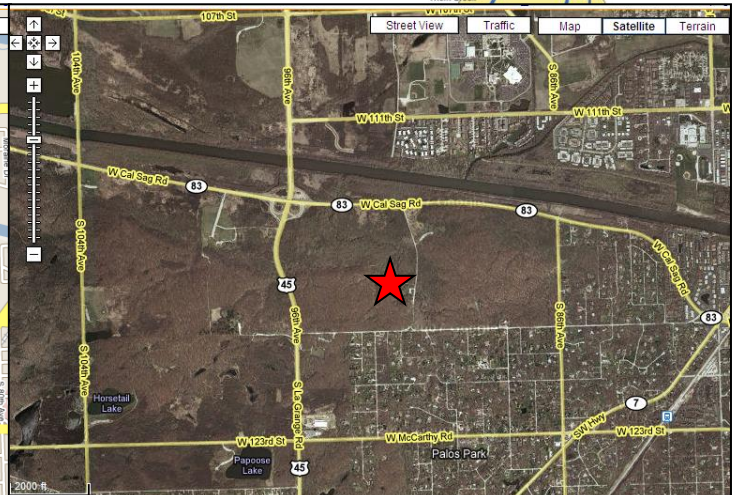
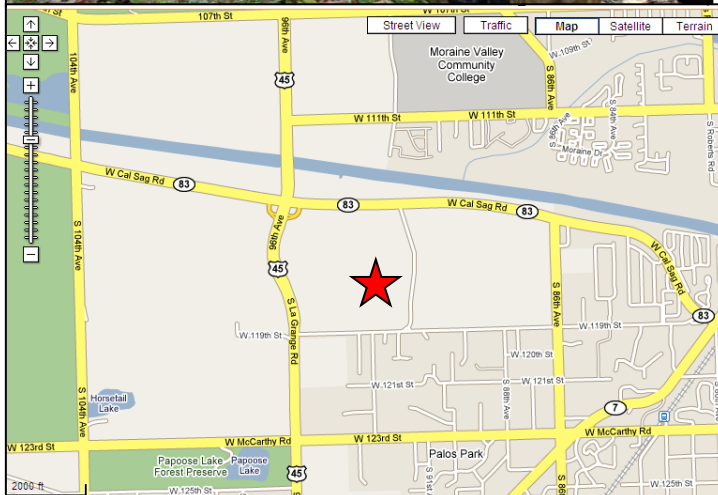
Access to water: Creek is small and very shallow with easy access.



Amenities: Port-a-potties available seasonally. Large lawn for lunch. Sometimes there are seasonally-placed picnic tables.

Parking: Parking lot

Capacity: 60 students

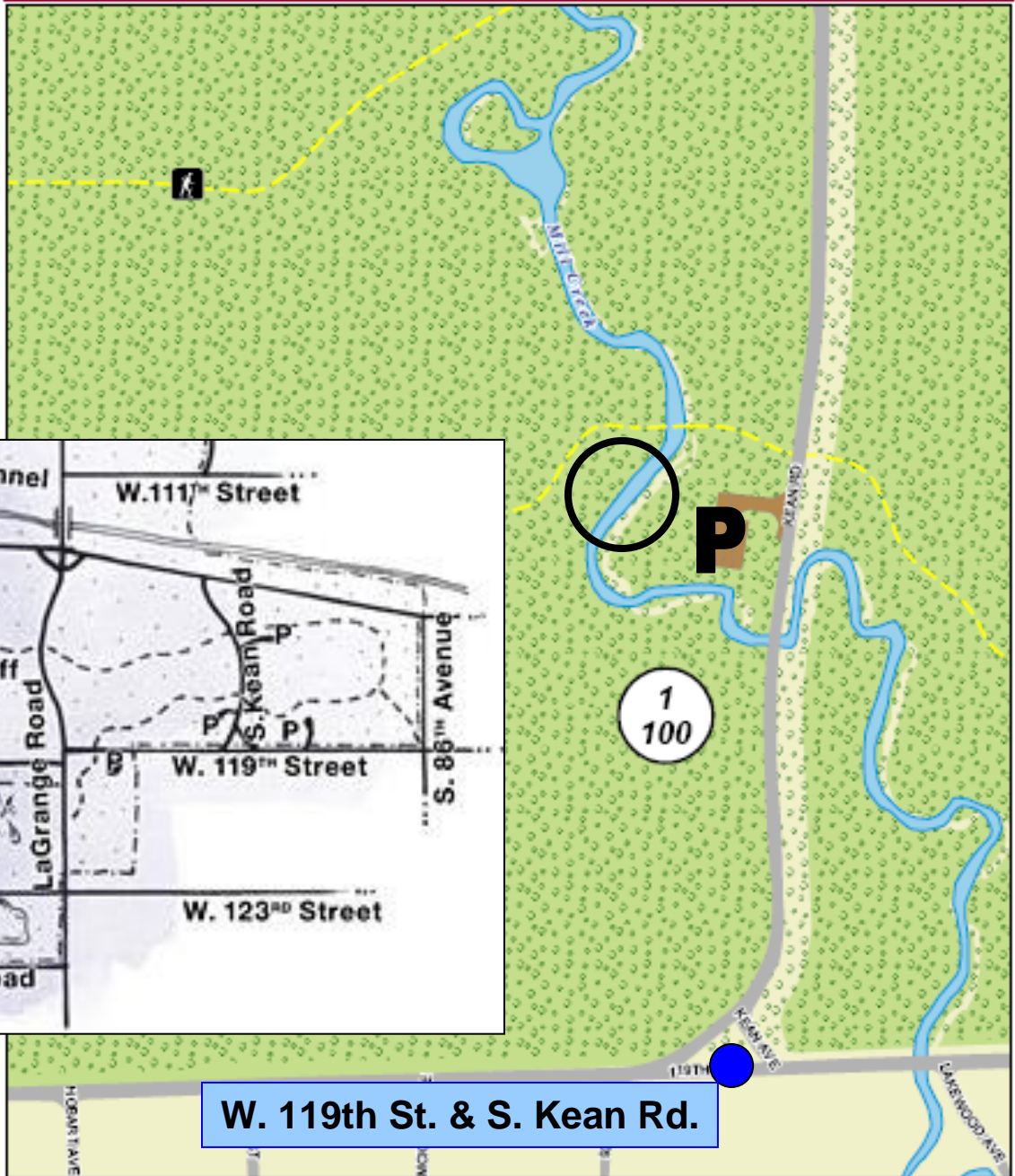




Picnic
Groves

McCLAUGHREY SPRINGS WOODS

SAG VALLEY DIVISION



W. 119th St. & S. Kean Rd.



1 - Grove Number
000 - Capacity

Parking
Trees

Unpaved Trail