

CHECKER MOTORS CORPORATION
Kalamazoo, Michigan 49007

SERVICE BULLETIN NO. K-12-73
June 18, 1973

MODEL 1973 BATTERY AND FRONT MOUNTED BATTERY CARRIER CHANGES
Taxicab-Marathon (6 Cylinder Only)
After Chassis No. 34615

Changes in the front mounted battery carrier installation furnished in model 1973 Taxicabs and Marathons equipped with a 6 cylinder engine only, after chassis number 34615 are shown in this Service Bulletin.

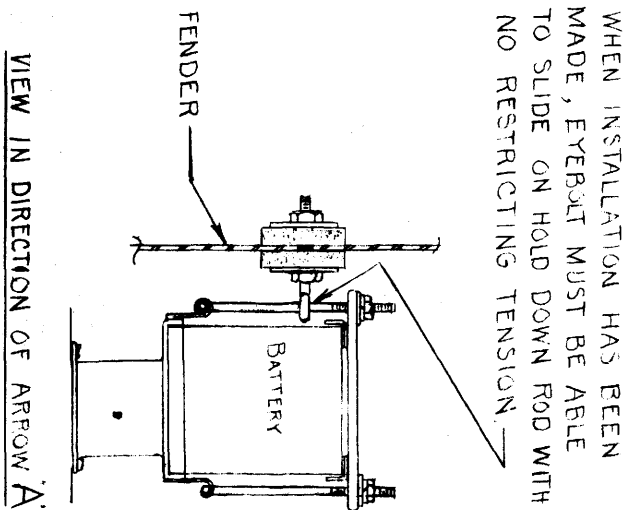
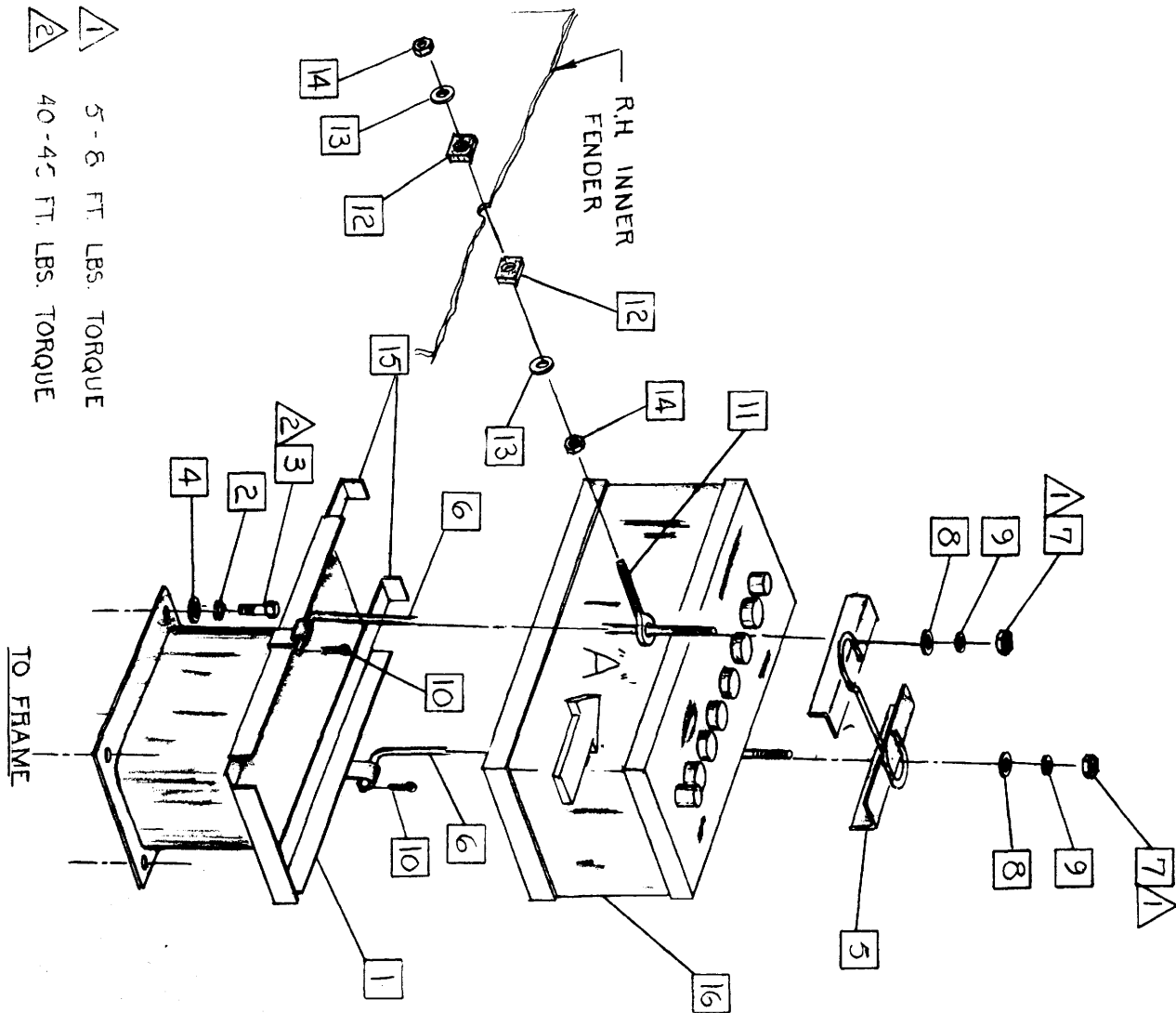
All front mounted battery carrier parts available for service replacement are identified in the attached Parts List and associated illustration No. 56G.

IMPORTANT: Refer to this Service Bulletin when ordering front mounted battery carrier parts for any Checker Taxicab or Marathon, equipped with a 6 cylinder engine only, after above noted chassis number.

Insert this Service Bulletin in front or rear of Group 16 in your Checker Parts Catalog dated September, 1971.

Parts and Service Division

Attachment



**BATTERY AND FRONT MOUNTED BATTERY CARRIER
TAXICAB-MARATHON (6 CYLINDER ONLY)**

After Chassis No. 34615

Illustration No. 56G

Service Bulletin No. K-12-73