

CHECKER MOTORS CORP. KALAMAZOO, MICH.

EFFECTIVE MODEL YEAR 1974

GRAPHIC ILLUSTRATION

DWN. TYPE  
CHK.

SHEET NO. 412 B-1

TRANSMISSION CONTROLS - KICK DOWN SW. WIRING

APPVD. SUPERSEDES G1 412A-2 PER MEMO #337

DATE CHANGES

DATE

6-7-73

MODEL: B-12 B-12WB

B-12E B-12WB

B-11E B-12WB

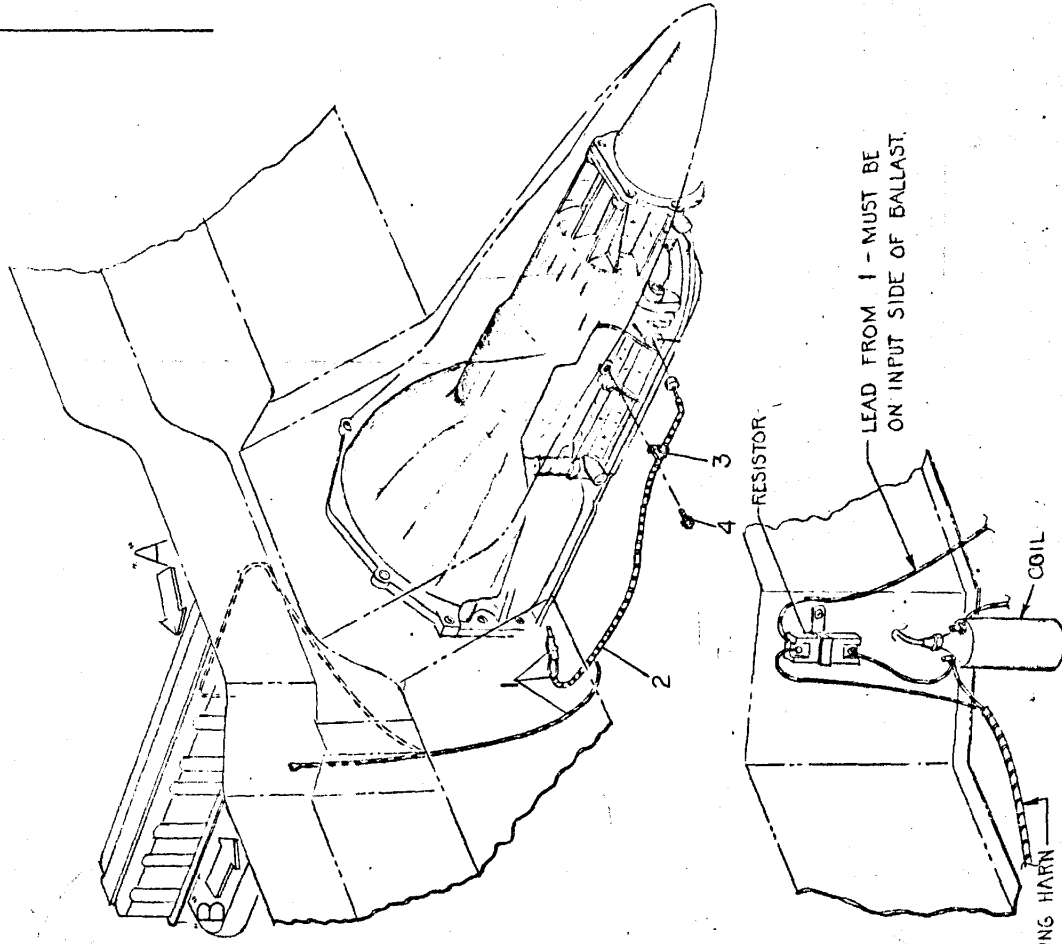
705196 SWITCH & INSULATOR ASM. - KICKDOWN -

1. 705197 SWITCH ASM. - KICKDOWN

2. 704804 INSULATOR - WIRE PROTECTOR

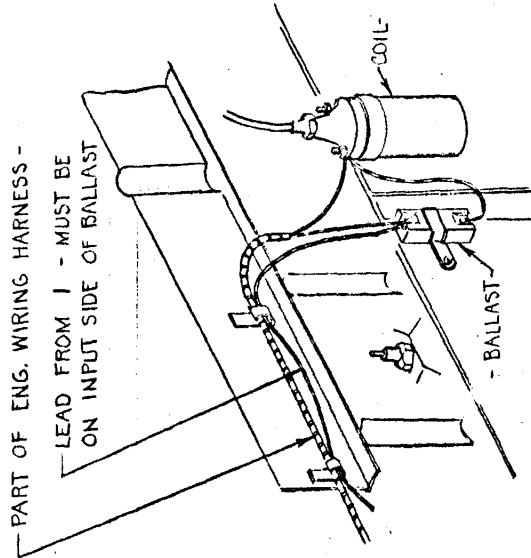
3. 626858 CLIP - NYLON 3/8 WIDE

4. 274105 SCREW #10-24 x 3/8 HEX.



PART OF ENG. WIRING HARNESS -

LEAD FROM 1 - MUST BE ON INPUT SIDE OF BALLAST



VIEW IN DIRECTION OF ARROW 'A' - 6 CYL ONLY

PART OF ENG. WIRING HARNESS

VIEW IN DIRECTION OF ARROW 'B' - 8 CYL ONLY