

CHECKER MOTORS CORP. KALAMAZOO, MICH.

EFFECTIVE MODEL YEAR 1974

SHEET NO. 745-1

DWN. Drawn
CHK. Checked

APPVD. SUPERSEDES G.I. 74A-4

DATE

8-14-73

GRAPHIC ILLUSTRATION

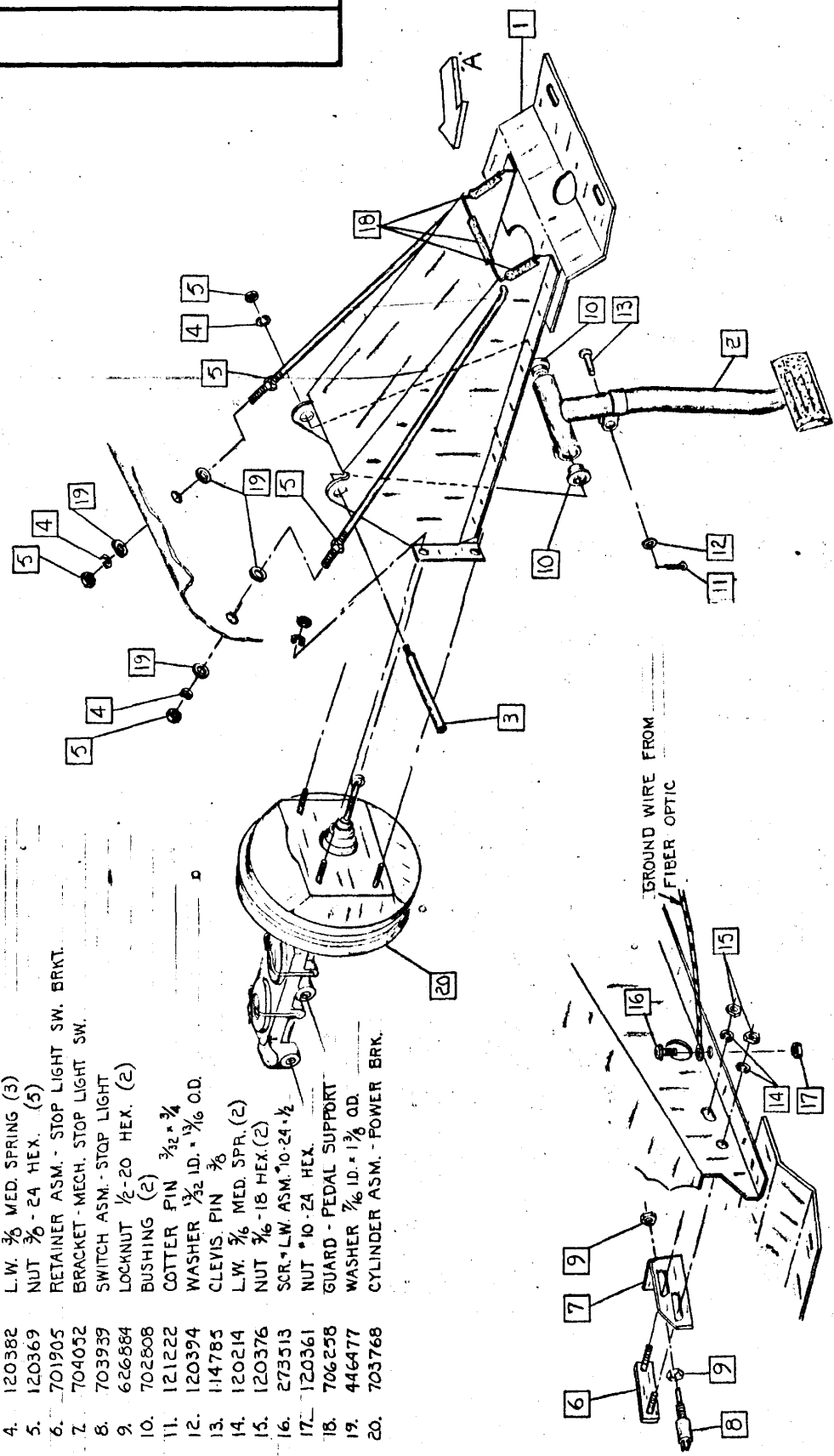
BRAKES - PEDAL SUPPORT - AUTOC. TRANS

MODEL:

B-11 B-12
B-12E B-12WB
B-11E B-12W

1. 705083 SUPPORT ASM. - PEDAL (WELDED)
2. 705767 PEDAL ASM. - BRAKE
3. 94430 SHAFT - BRAKE PEDAL
4. 120382 L.W. $\frac{3}{8}$ MED. SPRING (3)
5. 120369 NUT $\frac{3}{8}$ - 24 HEX. (5)
6. 701905 RETAINER ASM. - STOP LIGHT SW. BRKT.
7. 704052 BRACKET - MECH. STOP LIGHT SW.
8. 703939 SWITCH ASM. - STOP LIGHT
9. 626884 LOCKNUT $\frac{1}{2}$ -20 HEX. (2)
10. 702808 BUSHING (2)
11. 121222 COTTER PIN $\frac{3}{32}$ x $\frac{3}{4}$
12. 120394 WASHER $\frac{1}{32}$ ID. x $\frac{1}{16}$ O.D.
13. 114785 CLEVIS PIN $\frac{3}{16}$
14. 120214 L.W. $\frac{3}{16}$ MED. SPR. (2)
15. 120376 NUT $\frac{1}{16}$ -18 HEX. (2)
16. 273513 SOR. L.W. ASM. 10-24 x $\frac{1}{2}$
17. 120361 NUT *10-24 HEX.
18. 706258 GUARD - PEDAL SUPPORT
19. 446477 WASHER $\frac{7}{16}$ ID. x $\frac{1}{2}$ O.D.
20. 703768 CYLINDER ASM. - POWER BRK.

| DATE | CHANGES |
|---------|--------------|
| 9-20-73 | 120361 Added |



VIEW IN DIRECTION OF ARROW 'A'