

CHECKER MOTORS CORP. KALAMAZOO, MICH.

EFFECTIVE MODEL YEAR 1974

MODEL:

A-11  
A-12

DATE

8-2-73

GRAPHIC ILLUSTRATION

G.M.A. WELDING - BALLOON

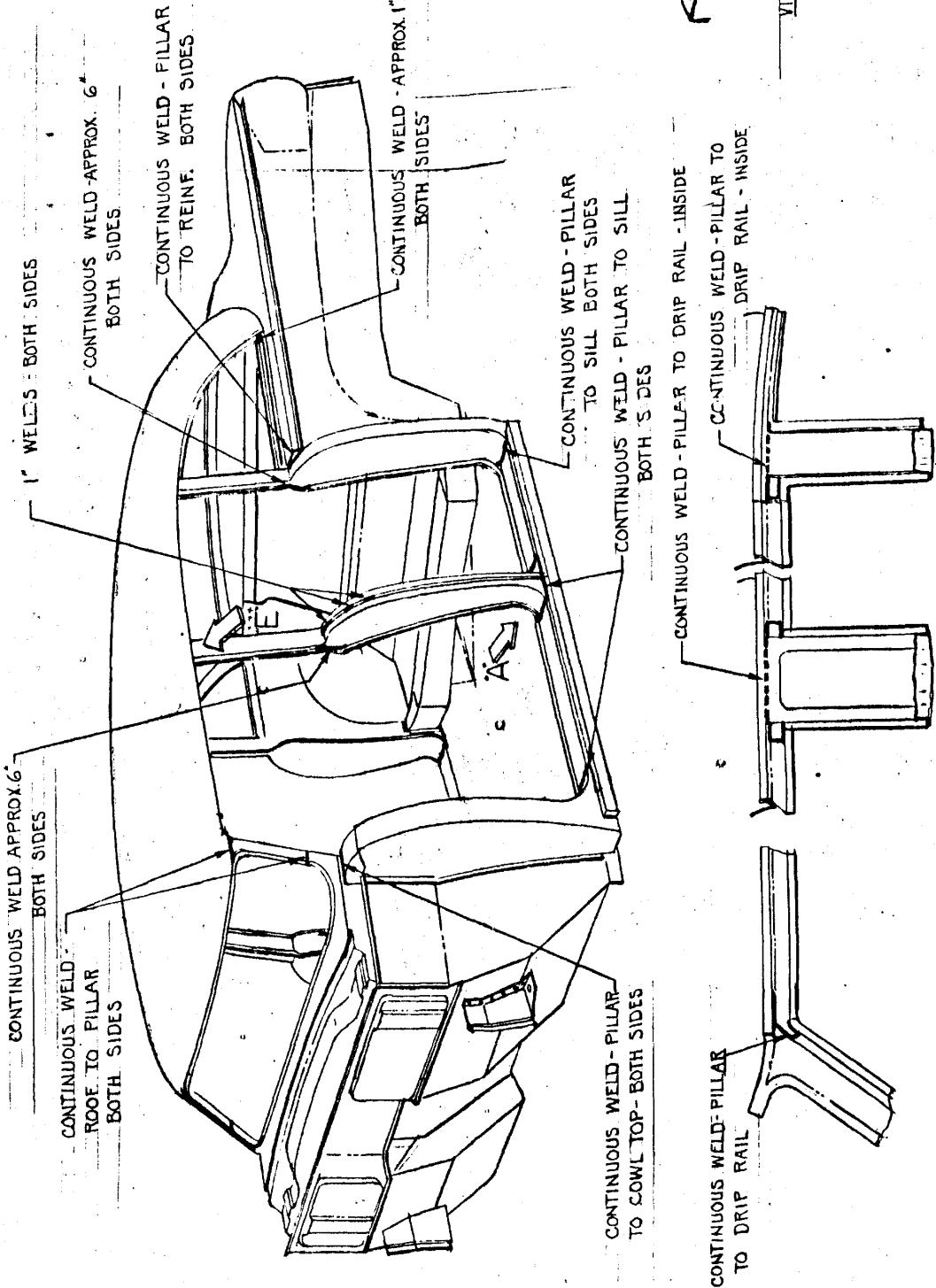
DWN. DESIGNED

CHK.

APPVD.

SHEET NO. 53B-1

DATE	CHANGES
8-10-73	Roof Rail Weld Fac. Inside



CONTINUOUS WELD APPROX. 6" BOTH SIDES

CONTINUOUS WELD ROOF TO PILLAR BOTH SIDES

1" WELDS - BOTH SIDES

CONTINUOUS WELD APPROX. 6" BOTH SIDES

CONTINUOUS WELD - PILLAR TO REINF. BOTH SIDES

CONTINUOUS WELD APPROX. 1" BOTH SIDES

CONTINUOUS WELD - PILLAR TO SILL BOTH SIDES

CONTINUOUS WELD - PILLAR TO SILL BOTH SIDES

CONTINUOUS WELD - PILLAR TO DRIP RAIL - INSIDE

CONTINUOUS WELD - PILLAR TO DRIP RAIL - INSIDE

CONTINUOUS WELD - PILLAR TO COWL TOP - BOTH SIDES

CONTINUOUS WELD - PILLAR TO DRIP RAIL

VIEW IN DIRECTION OF ARROW 'E' BOTH SIDES

FRONT PILLAR CENTER PILLAR REAR PILLAR

VIEW IN DIRECTION OF ARROW 'A' - BOTH SIDES

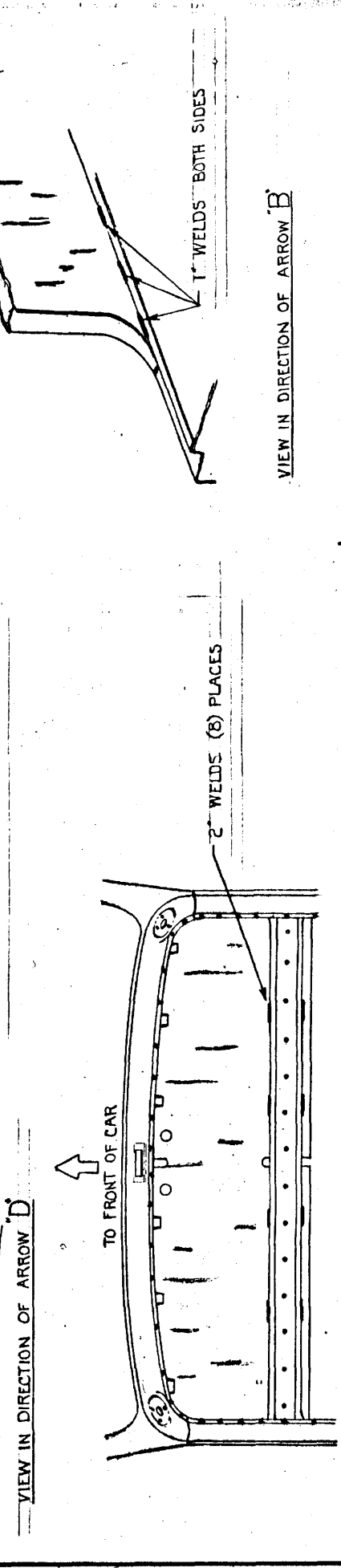
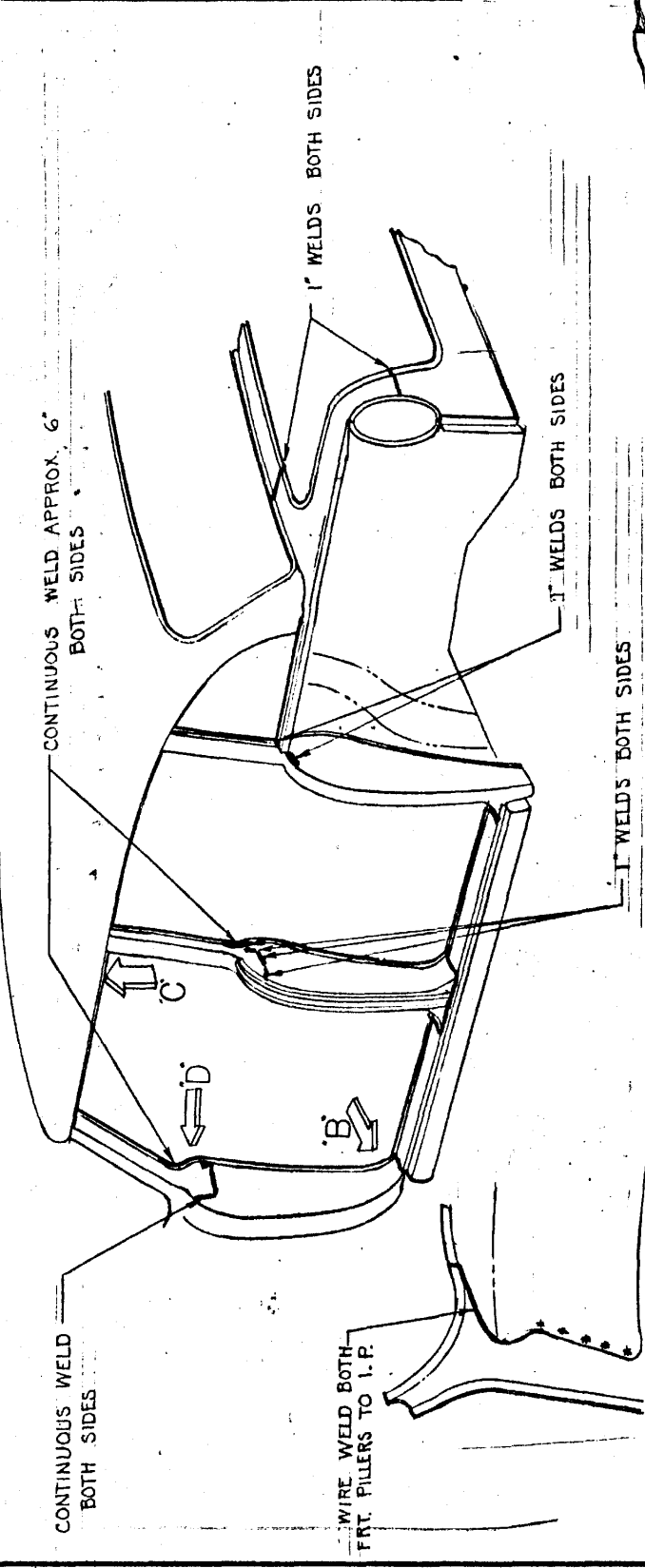
2" WELD BOTH SIDES

CHECKER MOTORS CORP. KALAMAZOO, MICH.

EFFECTIVE MODEL YEAR 1972

MODEL: A-II A-III	A-12 A-12E A-11E	DATE 8-2-73	GRAPHIC ILLUSTRATION G.M.A. WELDING BALLOON	DWN. <i>Drury</i> CHK. <i>RJD</i> APPVD. <i>A. Dison</i>	SHEET NO. 63 B.2
-------------------------	------------------------	----------------	--	--	------------------

DATE	CHANGES



CONTINUOUS WELD BOTH SIDES

CONTINUOUS WELD APPROX. 6" BOTH SIDES

1" WELDS BOTH SIDES

WIRE WELD BOTH FRT. PILLERS TO I.P.

1" WELDS BOTH SIDES

2" WELDS (8) PLACES

VIEW IN DIRECTION OF ARROW "B"

VIEW IN DIRECTION OF ARROW "C"

TO FRONT OF CAR

CHECKER MOTORS CORP. KALAMAZOO, MICH.

EFFECTIVE MODEL YEAR 1974

GRAPHIC ILLUSTRATION

SHEET NO. 63B-3

DWN. CHK.

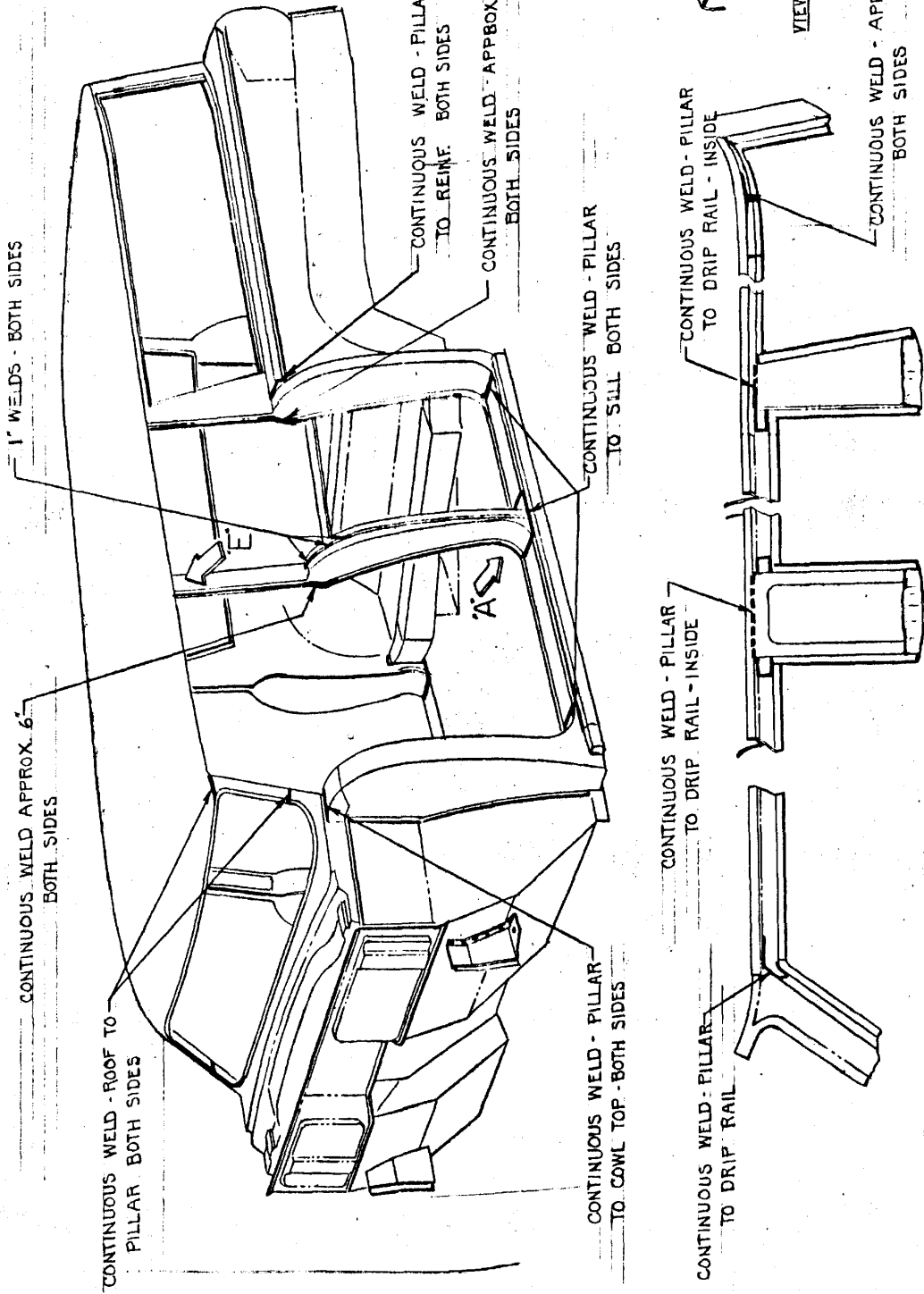
G.M.A. WELDING - BALLOON

DATE 8-2-73

MODEL A12W

APPVD. *[Signature]*

DATE	CHANGES
8-10-73	RAIL WELD PW. INSIDE



CONTINUOUS WELD - ROOF TO PILLAR BOTH SIDES

CONTINUOUS WELD APPROX. 6" BOTH SIDES

1" WELDS - BOTH SIDES

CONTINUOUS WELD - PILLAR TO REIN. BOTH SIDES

CONTINUOUS WELD APPROX. 6" BOTH SIDES

CONTINUOUS WELD - PILLAR TO SILL BOTH SIDES

CONTINUOUS WELD - PILLAR TO COWL TOP - BOTH SIDES

CONTINUOUS WELD - PILLAR TO DRIP RAIL - INSIDE

CONTINUOUS WELD - PILLAR TO DRIP RAIL - INSIDE

CONTINUOUS WELD - APPROX 2" BOTH SIDES

CONTINUOUS WELD - PILLAR TO DRIP RAIL

CONTINUOUS WELD - PILLAR TO DRIP RAIL - INSIDE

FRONT PILLAR CENTER PILLAR REAR PILLAR

VIEW IN DIRECTION OF ARROW E - BOTH SIDES

VIEW IN DIRECTION OF ARROW A - BOTH SIDES

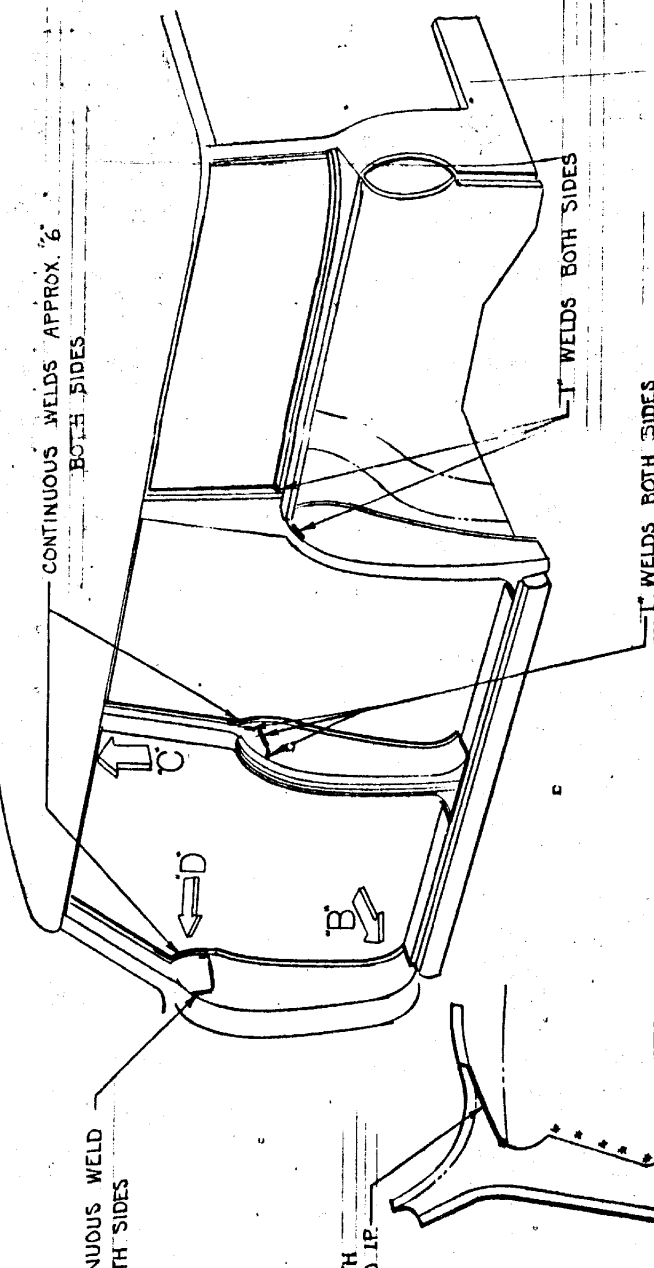
2" WELDS - PILLAR TO FLOOR PAN.

CHECKER MOTORS CORP. KALAMAZOO, MICH.

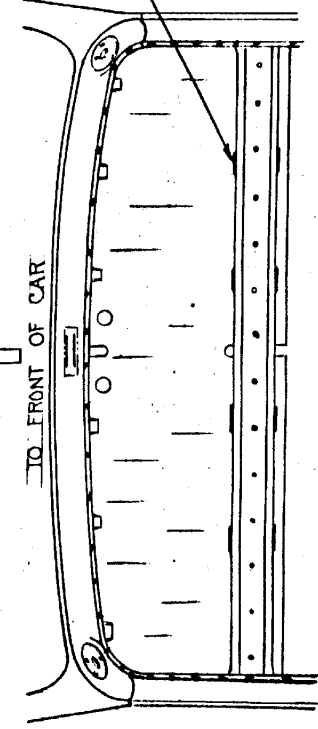
EFFECTIVE MODEL YEAR 1974

MODEL:	DATE:	DWN. CHK.	SHEET NO.
A-12W	B-2-73		63B-4
GRAPHIC ILLUSTRATION		APPVD. <i>H. Dieker</i>	
G.M.A. WELDING - BALLOON		DATE	
		CHANGES	

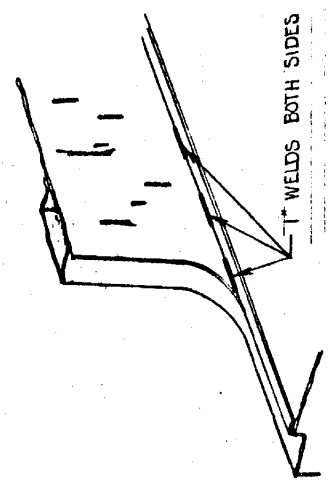
DATE	CHANGES



VIEW IN DIRECTION OF ARROW 'D'



VIEW IN DIRECTION OF ARROW 'C'



VIEW IN DIRECTION OF ARROW 'B'

WIRE, WELD BOTH  
FRONT PILLERS TO IP

CONTINUOUS WELD  
BOTH SIDES

CONTINUOUS WELDS APPROX. 6"  
BOTH SIDES

1" WELDS BOTH SIDES

1" WELDS BOTH SIDES

2 WELDS (8) PLACES

1" WELDS BOTH SIDES